



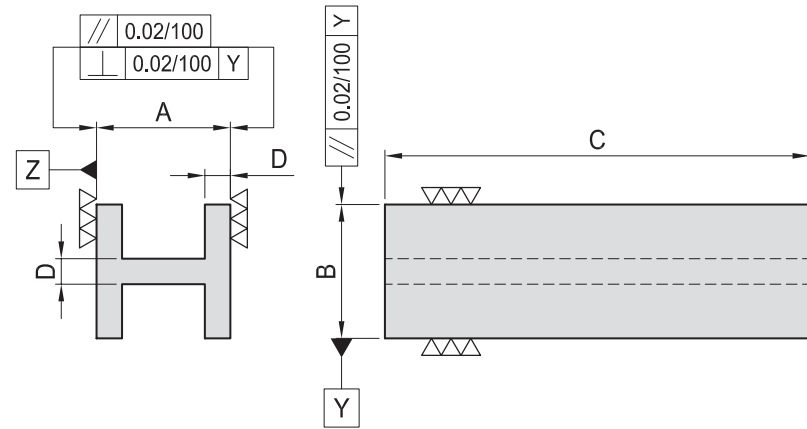
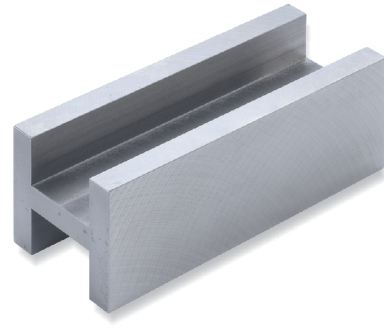
BASE COMPONENTS

BC01~BC14

H-SECTION SQUARE HOLLOW BLOCK RECTANGULAR HOLLOW BLOCK CHANNEL SECTION

BC01

H-SECTION

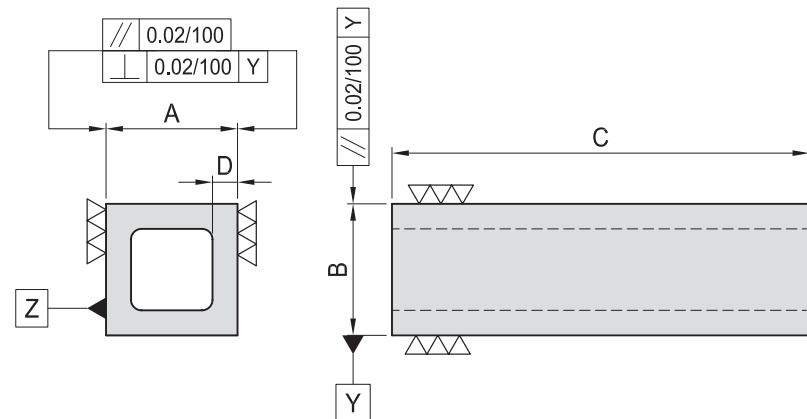
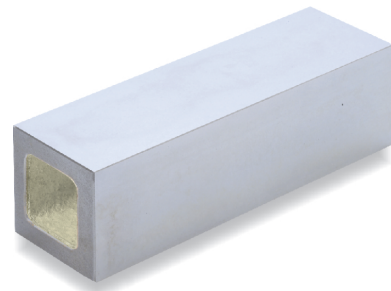


- Material : Cast Iron.
FC-300 (JIS)
GG-30 (DIN)
- Heat treated : Normalized

| MODEL NO. | A | B | C | D | E | kg |
|-----------------|-----|-----|-----|----|------|------|
| BC01-063063-200 | 63 | 63 | 200 | 12 | 25.5 | 2.8 |
| BC01-080080-200 | 80 | 80 | 200 | 16 | 32.0 | 4.8 |
| BC01-080080-400 | | | 400 | | | 9.6 |
| BC01-125125-200 | 125 | 125 | 200 | 20 | 52.5 | 9.6 |
| BC01-125125-400 | | | 400 | | | 19.3 |

BC02

SQUARE HOLLOW BLOCK

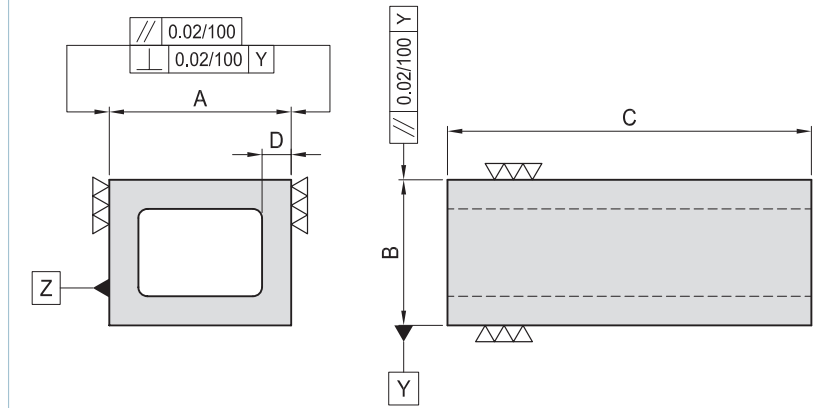
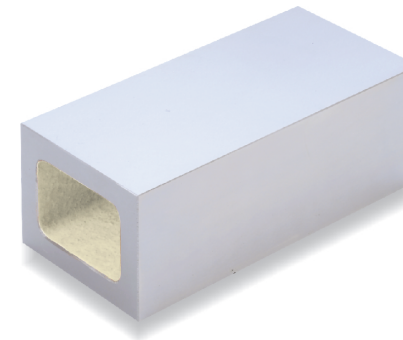


- Material : Cast Iron.
FC-300 (JIS)
GG-30 (DIN)
- Heat treated : Normalized

| MODEL NO. | A | B | C | D | kg |
|-----------------|-----|-----|-----|----|------|
| BC02-063063-200 | 63 | 63 | 200 | 12 | 2.3 |
| BC02-100100-200 | 100 | 100 | 200 | 16 | 8.0 |
| BC02-100100-400 | | | 400 | | 16.0 |
| BC02-160160-200 | 160 | 160 | 200 | 20 | 16.5 |
| BC02-160160-400 | | | 400 | | 33.0 |

BC03

RECTANGULAR HOLLOW BLOCK

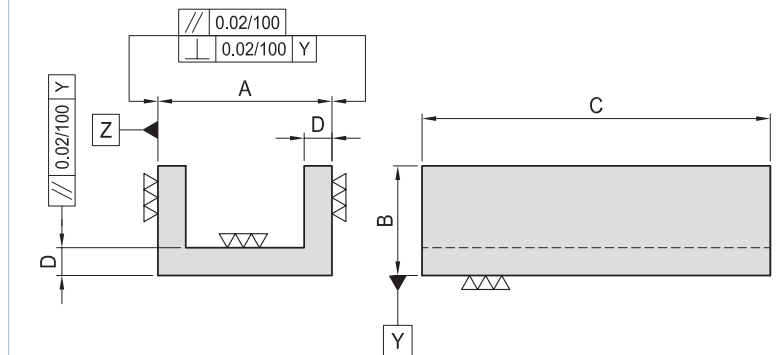
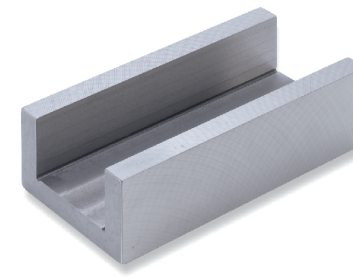


- Material : Cast Iron.
FC-300 (JIS)
GG-30 (DIN)
- Heat treated : Normalized

| MODEL NO. | A | B | C | D | kg |
|-----------------|-----|-----|-----|----|------|
| BC03-080100-200 | 100 | 80 | 200 | 16 | 7.0 |
| BC03-080100-400 | | | 400 | | 14.0 |
| BC03-100160-200 | 160 | 100 | 200 | 18 | 11.6 |
| BC03-100160-400 | | | 400 | | 23.2 |

BC04

CHANNEL SECTION



- Material : Cast Iron.
FC-300 (JIS)
GG-30 (DIN)
- Heat treated : Normalized

| MODEL NO. | A | B | C | D | kg |
|-----------------|-----|----|-----|----|------|
| BC04-063100-200 | 100 | 63 | 200 | 16 | 4.5 |
| BC04-063100-300 | 100 | 63 | 300 | 16 | 6.8 |
| BC04-090160-300 | 160 | 90 | 300 | 20 | 13.0 |

BP

BPA

BC

CP

SU

PT

SVF

ALV

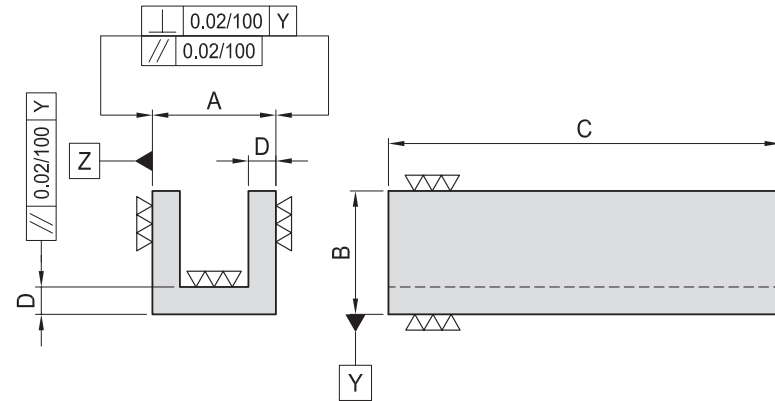
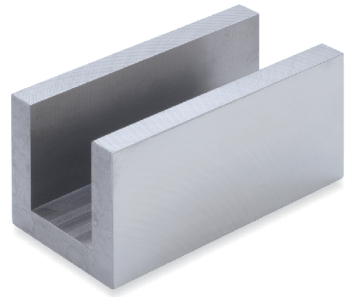
OK-
VISE

OTHER

Column
for
Technical
Data

BC05

U-SECTION

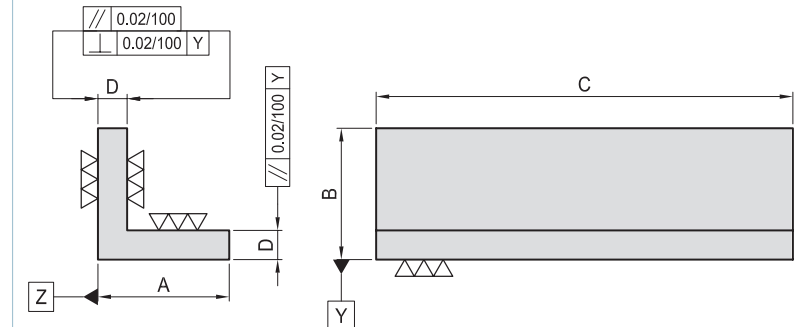


- Material : Cast Iron.
FC-300 (JIS)
GG-30 (DIN)
- Heat treated : Normalized

| MODEL NO. | A | B | C | D | kg |
|-----------------|-----|-----|-----|----|------|
| BC05-063063-200 | 63 | 63 | 200 | 14 | 3.2 |
| BC05-063063-400 | | | 400 | | 6.5 |
| BC05-100100-200 | 100 | 100 | 200 | 20 | 7.7 |
| BC05-100100-400 | | | 400 | | 14.8 |
| BC05-150150-200 | 150 | 150 | 200 | 25 | 14.0 |
| BC05-150150-400 | | | 400 | | 29.0 |

BC07

L-SECTION

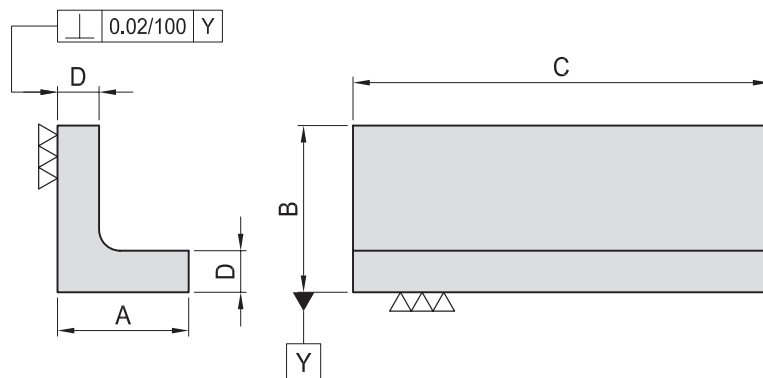
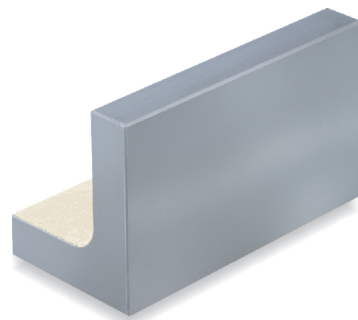


- Material : Cast Iron.
FC-300 (JIS)
GG-30 (DIN)
- Heat treated : Normalized

| MODEL NO. | A | B | C | D | kg |
|-----------------|-----|-----|-----|----|------|
| BC07-063063-200 | 63 | 63 | 200 | 14 | 2.3 |
| BC07-063063-400 | | | 400 | | 4.5 |
| BC07-100100-200 | 100 | 100 | 200 | 20 | 5.2 |
| BC07-100100-400 | | | 400 | | 10.4 |

BC06

HEAVY DUTY L-SECTION

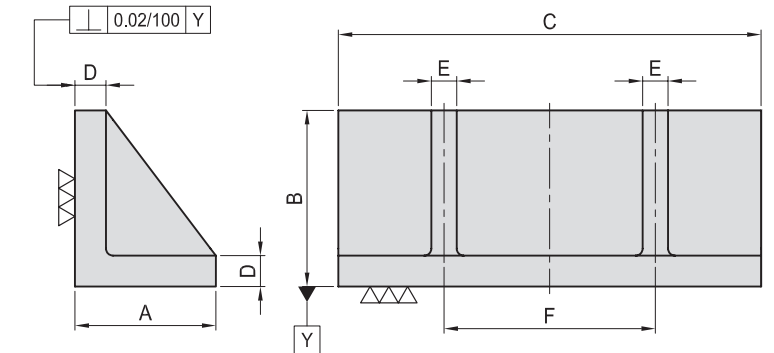
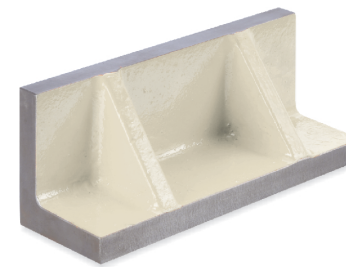


- Material : Cast Iron.
FC-300 (JIS)
GG-30 (DIN)
- Heat treated : Normalized

| MODEL NO. | A | B | C | D | kg |
|-----------------|-----|-----|-----|----|------|
| BC06-080063-200 | 63 | 80 | 200 | 20 | 3.6 |
| BC06-080063-400 | | | 400 | | 7.2 |
| BC06-125100-200 | 100 | 125 | 200 | 25 | 7.3 |
| BC06-125100-400 | | | 400 | | 15.0 |
| BC06-200160-200 | 160 | 200 | 200 | 32 | 15.0 |
| BC06-200160-400 | | | 400 | | 31.0 |

BC08

WEBBED L-SECTION



- Material : Cast Iron.
FC-300 (JIS)
GG-30 (DIN)
- Heat treated : Normalized

| MODEL NO. | A | B | C | D | E | F | kg |
|-----------------|-----|-----|-----|----|----|-----|------|
| BC08-125100-150 | 100 | 125 | 150 | 22 | 18 | - | 5.3 |
| BC08-125100-300 | 100 | 125 | 300 | 22 | 18 | 150 | 11.0 |

BP

BPA

BC

CP

SU

PT

SVF

ALV

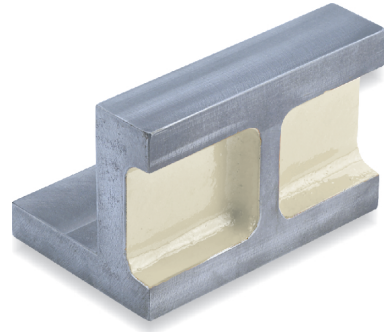
OK-
VISE

OTHER

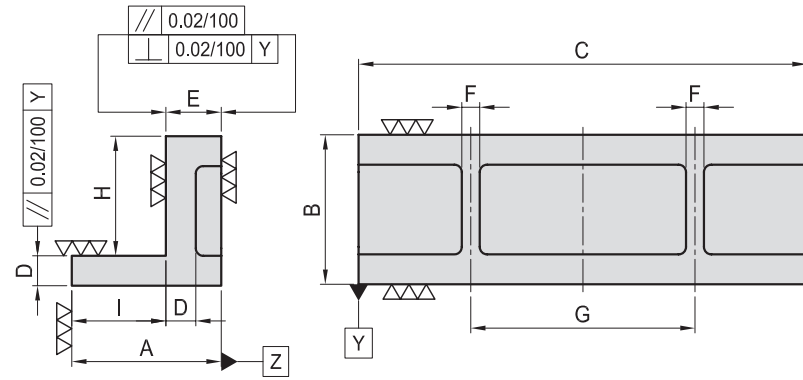
Column
for
Technical
Data

BC09

WEBBED T-SECTION



- Material : Cast Iron.
FC-300 (JIS)
GG-30 (DIN)
- Heat treated : Normalized



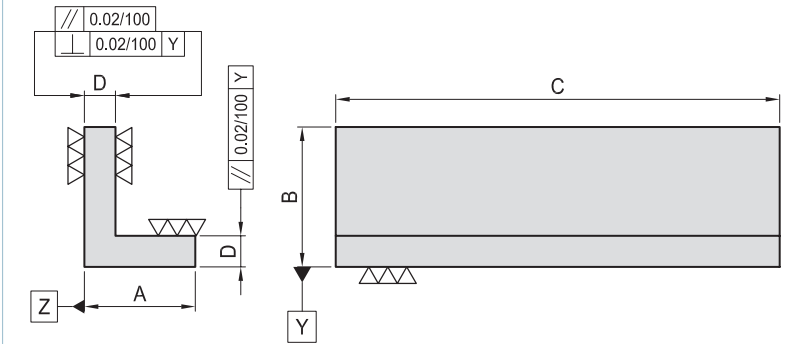
| MODEL NO. | A | B | C | D | E | F | G | H | I | kg |
|-----------------|-----|-----|-----|----|----|----|-----|----|----|-----|
| BC09-100100-150 | 100 | 100 | 150 | 20 | 37 | 12 | - | 80 | 63 | 4.4 |
| BC09-100100-300 | 100 | 100 | 300 | 20 | 37 | 12 | 150 | 80 | 63 | 8.7 |

BC12

UNEQUAL L-SECTION



- Material : Cast Iron.
FC-300 (JIS)
GG-30 (DIN)
- Heat treated : Normalized



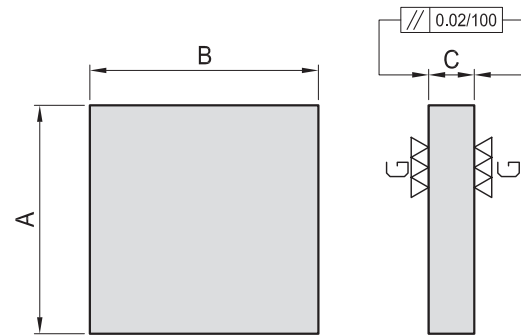
| MODEL NO. | A | B | C | D | kg |
|-----------------|----|----|-----|----|----|
| BC12-063050-200 | 50 | 63 | 200 | 14 | 2 |
| BC12-063050-300 | 50 | 63 | 300 | 14 | 3 |
| BC12-063050-500 | 50 | 63 | 500 | 14 | 5 |

BC10

STEEL RECTANGULAR PLATE



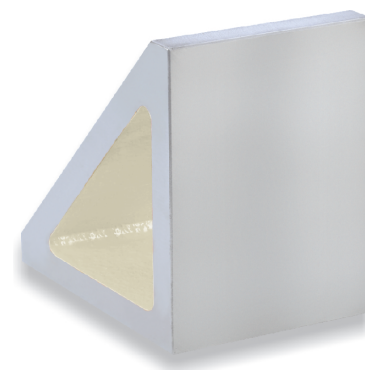
- Material : S45C



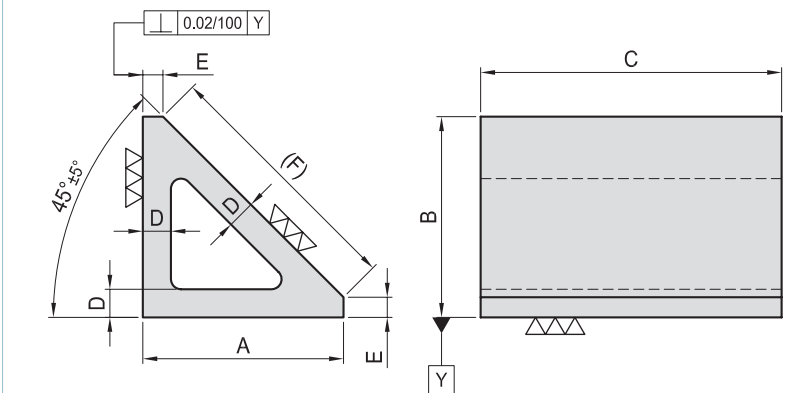
| MODEL NO. | A | B | C | kg |
|----------------|-----|-----|----|------|
| BC10-20100-100 | 100 | 100 | 20 | 1.6 |
| BC10-20100-150 | | 150 | | 2.3 |
| BC10-25150-200 | 150 | 200 | 25 | 5.9 |
| BC10-25150-250 | | 250 | | 7.3 |
| BC10-25200-200 | 200 | 200 | 25 | 7.8 |
| BC10-25200-250 | | 250 | | 9.8 |
| BC10-25250-250 | 250 | 250 | 25 | 12.0 |

BC13

ANGULAR HOLLOW BLOCK 45°



- Material : Cast Iron.
FC-300 (JIS)
GG-30 (DIN)
- Heat treated : Normalized



| MODEL NO. | A | B | C | D | E | F | kg |
|-----------------|-----|-----|-----|----|----|-----|------|
| BC13-100100-150 | 100 | 100 | 150 | 14 | 10 | 127 | 4.5 |
| BC13-100100-300 | | | 300 | | | | 8.8 |
| BC13-200200-150 | 200 | 200 | 150 | 22 | 20 | 255 | 15.0 |
| BC13-200200-300 | | | 300 | | | | 29.0 |

BP

BPA

BC

CP

SU

PT

SVF

ALV

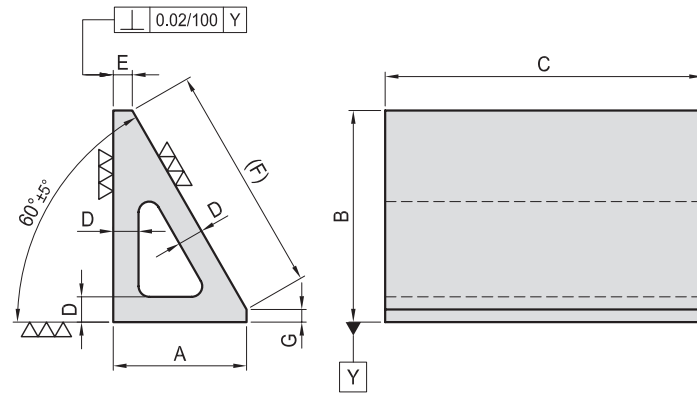
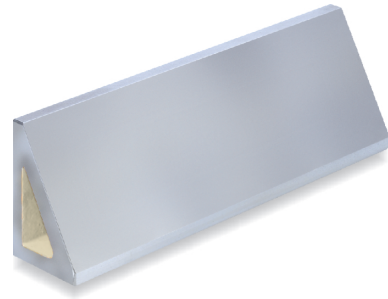
OK-VISE

OTHER

Column for Technical Data

BC14

ANGULAR HOLLOW BLOCK 30°



- Material : Cast Iron.
FC-300 (JIS)
GG-30 (DIN)
- Heat treated : Normalized

| MODEL NO. | A | B | C | D | E | F | G | kg |
|-----------------|-----|-----|-----|----|----|-----|---|------|
| BC14-100063-150 | 63 | 100 | 150 | 12 | 9 | 108 | 6 | 3.0 |
| BC14-100063-300 | | | 300 | | | | | 6.0 |
| BC14-200125-150 | 125 | 200 | 150 | 20 | 14 | 222 | 8 | 9.5 |
| BC14-200125-300 | | | 300 | | | | | 19.0 |