

TCP

TOOL TIGHTENING FIXTURE

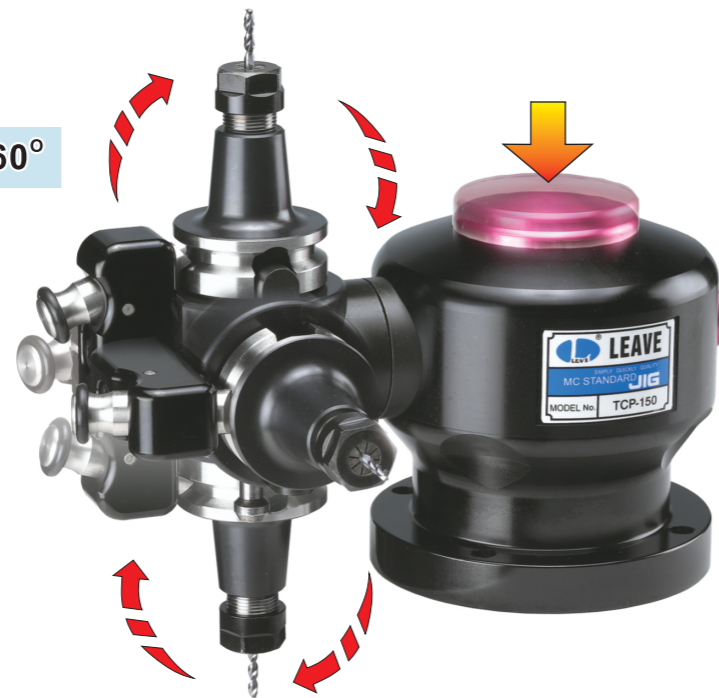
Tool Holder is Changeable

Easy assemble and dis-assemble tool holder from main body while pressing the valve on the right hand side of the unit.



Tool Holder is Adjustable up to 360°

Easily adjusts tool holders for a full 360° (45° increments) by pushing the valve on the top of the tightening fixture.



4pcs of M10x40mm bolt can be fastened from the top of the mounting flange or 4pcs of M12 bolt can be fastened from the bottom of the mounting

Tightening Fixture Main Body



Model No.	kg
TCP-150	6

Tool Holder

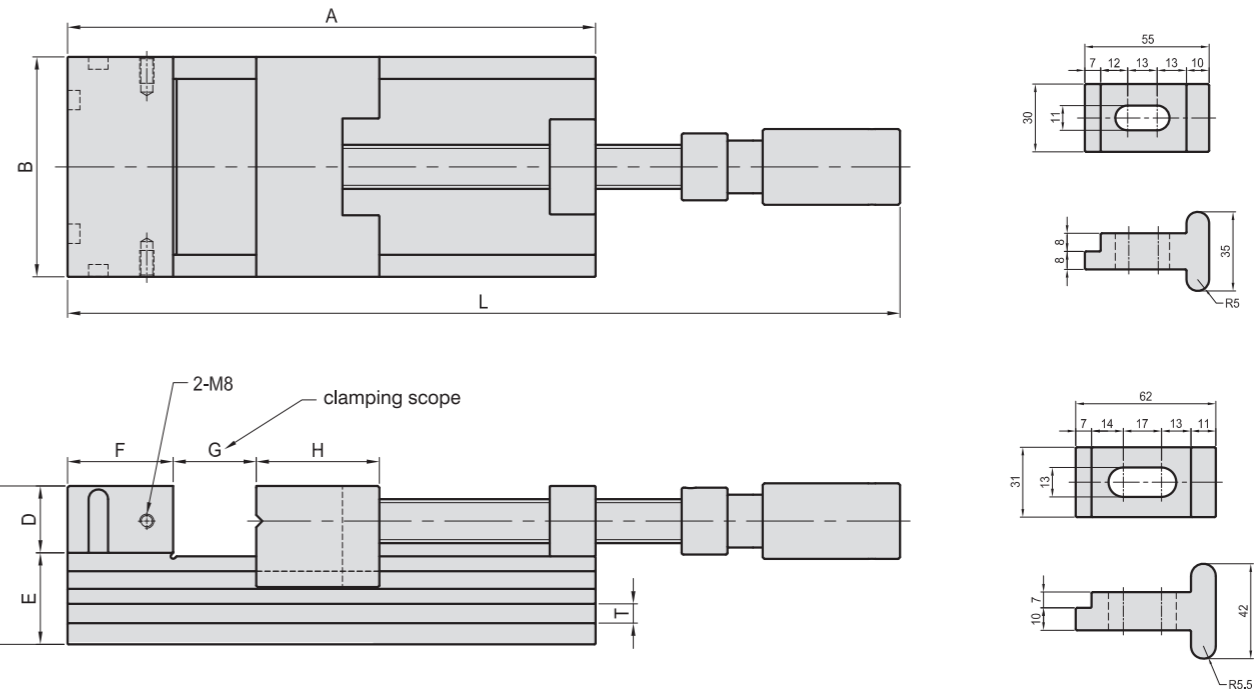
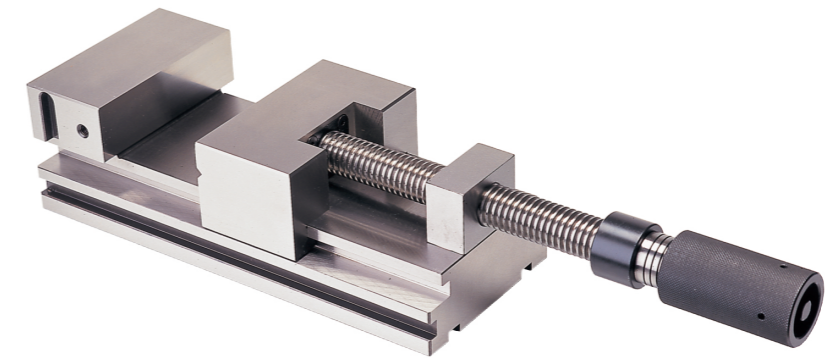


Model No.	kg	Model No.	kg
TCP-BT30	2.3	TCP-HSK-A-100	3.8
TCP-BT40	2.8	TCP-HSK-E-25	2.3
TCP-BT50	4.8	TCP-HSK-E-32	2.5
TCP-HSK-A-40	3.3	TCP-HSK-E-40	2.8
TCP-HSK-A-63	2.3	TCP-HSK-E-50	3.0
TCP-HSK-A-80	3.5	TCP-HSK-F-63	3.2

PGV

PGV PRECISION HYDRAULIC VISE

- Super precision: // ±0.005 / 100mm
⊥ ±0.005 / 100mm
- Heat treated: HRC 58°~60°
- Application: Multifunction tool makers vise, ideally suited for: inspection, grinding or edm work.



MODEL NO.	A	B	C	D	E	F	G	H	L		T	Material	Kg
									MIN	MAX			
PGV-100	220	100	80	40	40	40	0~110	50	344	455	9x7	SNCM21	10.0
PGV-100N									SKS3				
PGV-125	300	125	90	40	50	60	0~165	70	420	590	11x7	SNCM21	19.5
PGV-125N									SKS3				

BP

BPA

BC

CP

SU

PT

SVF

ALV

OK-
VISE

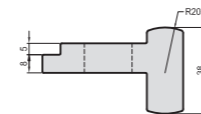
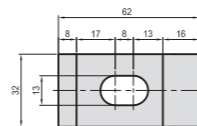
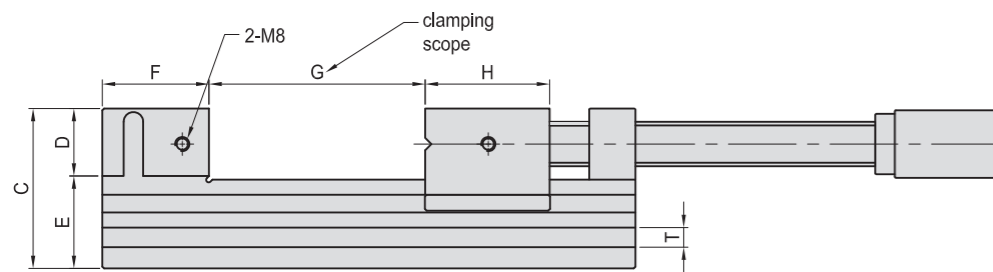
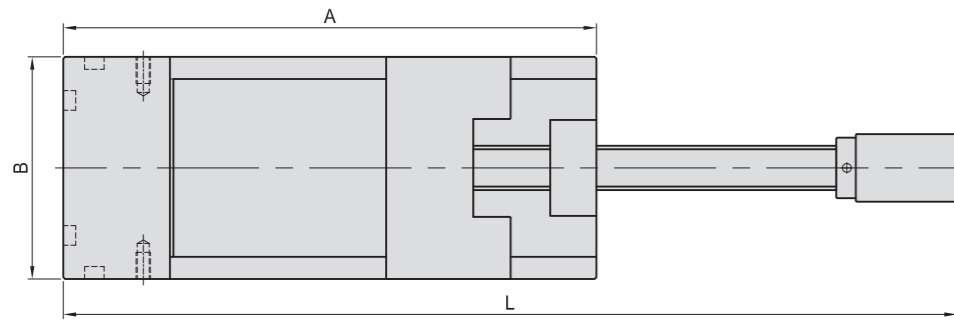
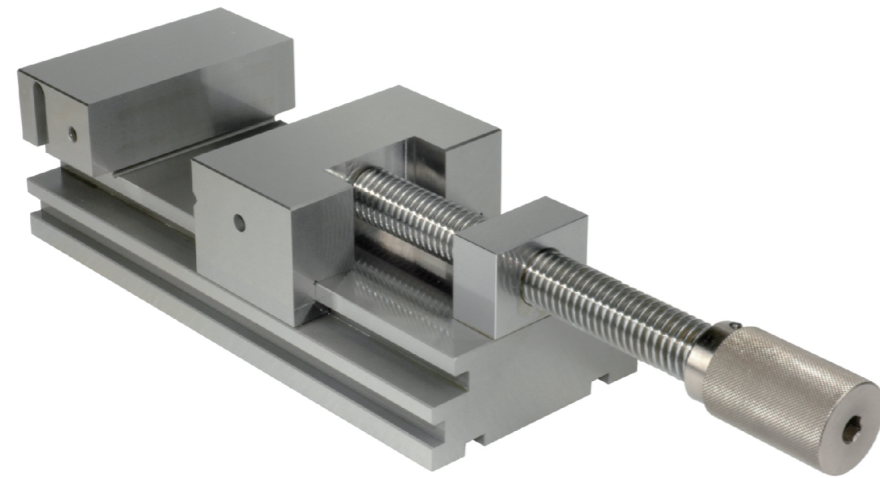
OTHER

Column
for
Technical
Data

PGV

TOOL MAKER VISE

- Super precision: // $\pm 0.005 / 100\text{mm}$
 $\perp \pm 0.005 / 100\text{mm}$
- Heat treated: HRC 58°~60°
- Material: SKS3
- Application: Multifunction tool makers vise, ideally suited for: inspection, grinding or edm work.

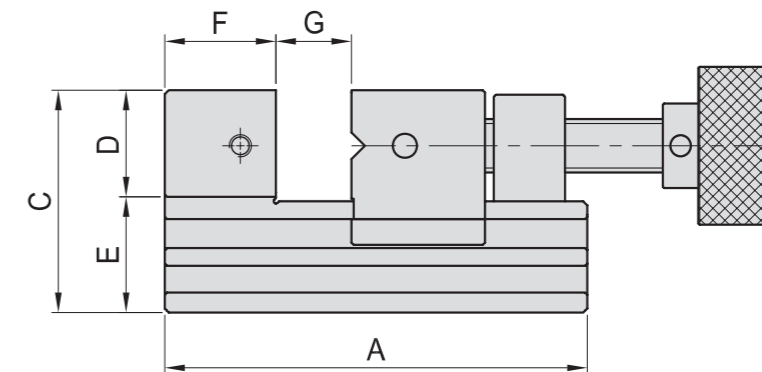
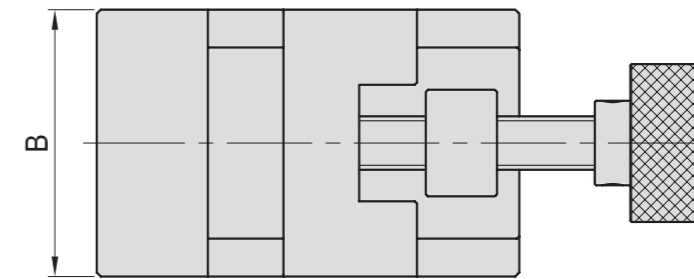
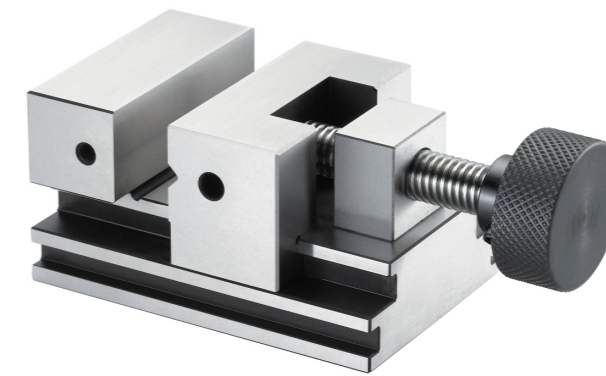


MODEL NO.	A	B	C	D	E	F	G	H	L		T	Kg
									MIN	MAX		
PGV-125M	300	125	90	40	50	60	0~165	70	382	546	11x7	19

GVS

SUPER PRECISION TOOL MAKER VISE

- Super precision: // $\pm 0.003 / 100\text{mm}$
 $\pm 0.005 / 100\text{mm}$
- Heat treated: HRC 58°~60°
- Material: SKS3



MODEL NO.	A	B	C	D	E	F	G	Kg
GVS-AS60	95	60	50	25	25	26.0	0~30	1.7

BP

BPA

BC

CP

SU

PT

SVF

ALV

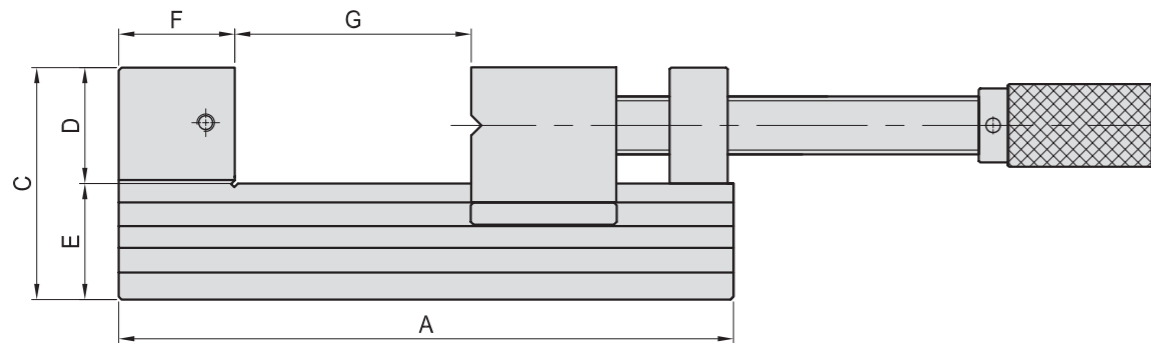
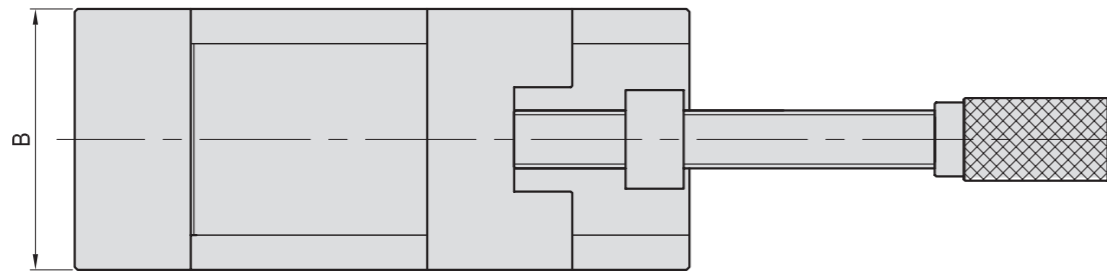
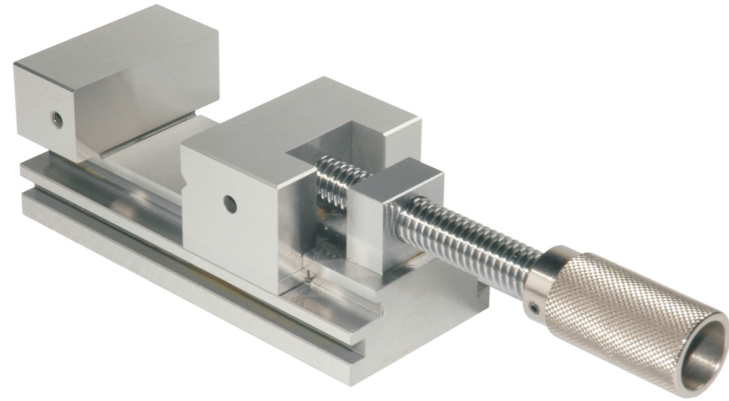
OK-
VISE

OTHER

Column
for
Technical
Data

**SUPER PRECISION TOOL
MAKER VISE**

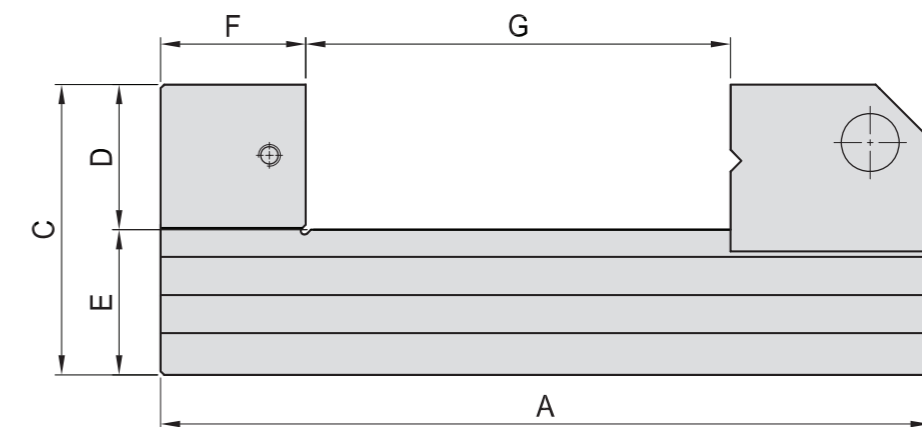
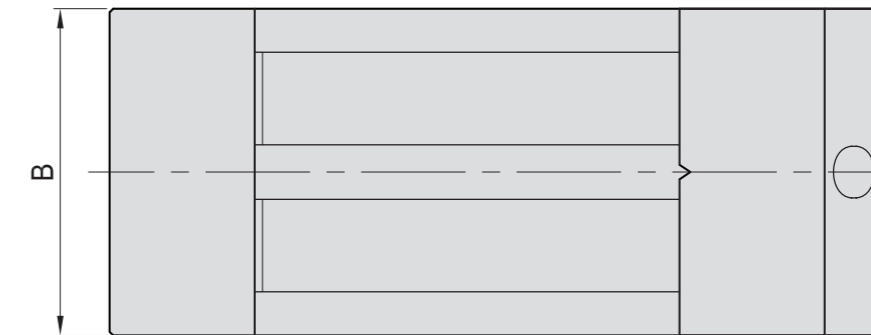
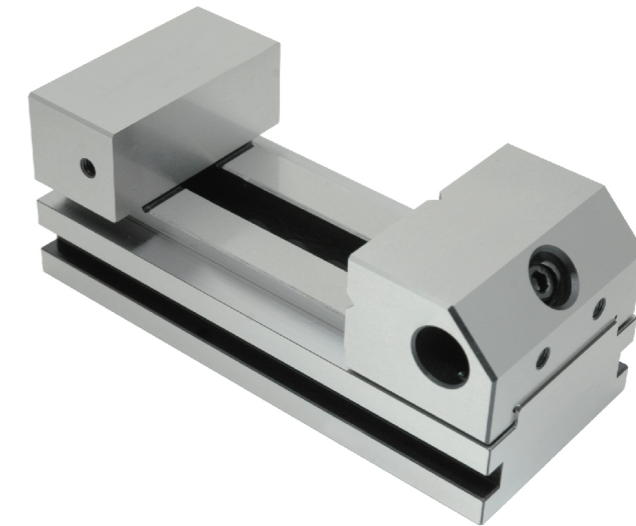
- Super precision: // $\pm 0.003 / 100\text{mm}$
 $\perp \pm 0.005 / 100\text{mm}$
- Heat treated: HRC 58°~60°
- Material: SKS3



MODEL NO.	A	B	C	D	E	F	G	Kg
GVS-AS70	165	70	62	30	32	33.0	0~80	4.5
GVS-AS90	212	90	80	40	40	41.2	0~120	8.5

**SUPER PRECISION TOOL
MAKER VISE**

- Super precision: // $\pm 0.003 / 100\text{mm}$
 $\perp \pm 0.005 / 100\text{mm}$
- Heat treated: HRC 58°~60°
- Material: SKS3



MODEL NO.	A	B	C	D	E	F	G	Kg
GVS-SV70	160	70	62	30	33	33.0	0~80	3.3
GVS-SV90	212	90	80	40	40	40.5	0~117	8.3

BP

BPA

BC

CP

SU

PT

SVF

ALV

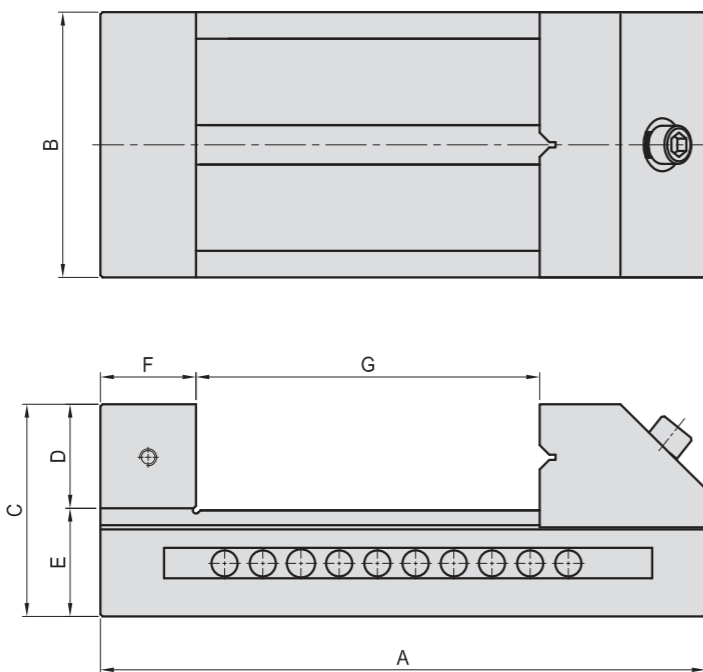
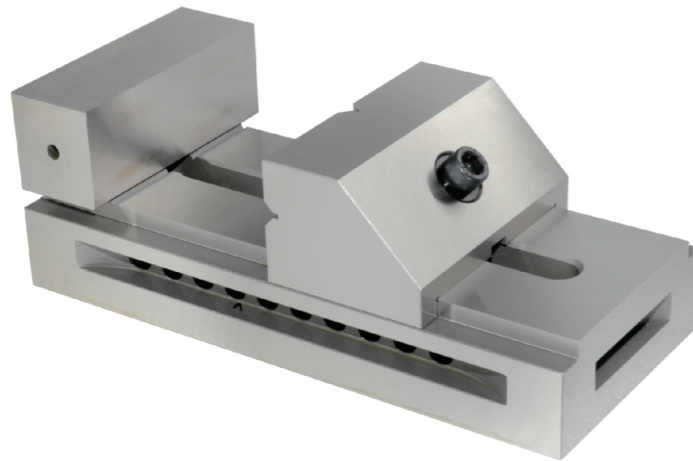
OK-
VISE

OTHER

Column
for
Technical
Data

TOOL MAKER VISE (LARGE)

- Super precision: // $\pm 0.003 / 100\text{mm}$
 $\perp \pm 0.005 / 100\text{mm}$
- Heat treated: HRC 58°~60°
- Material: SKS3

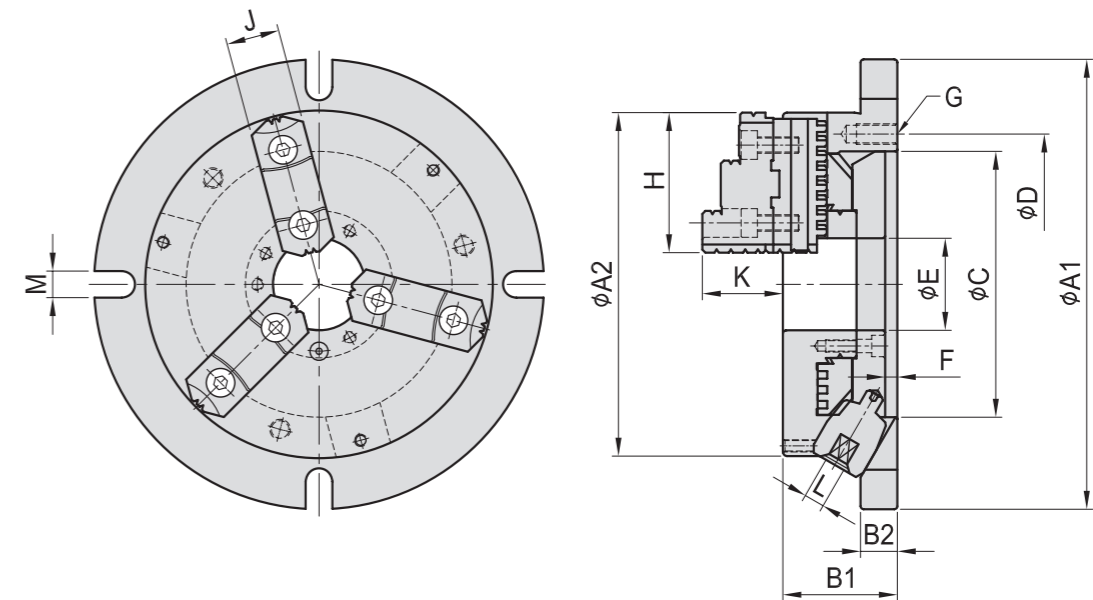


MODEL NO.	A	B	C	D	E	F	G	Kg
GVS-VS50	285	125	100	50	50	45	0~160	18



ROUND SUPER THIN CHUCK

- The handle with an angle of 30 degrees is much convenient for operations.
- The "super thin thickness" design of chucks increase the "allowable distance" of machining operations.
- Chuck flange makes loading and unloading operations simpler and more convenient.
- Hard jaws and Soft jaws can be used alternatively.



SPEC./MODEL	A1	A2	B1	B2	C	D	E	F	G	H	J	K	L	M	Max. Dia Gripped by		Kg
															external	internal	
NBK-06	220	170	58	18	130	147	45	6	3-M10	68	26	40	10	13	$\phi 8-\phi 160$	$\phi 48-\phi 150$	10.6
NBK-08	270	210	65	20	155	172	60	6	3-M10	82	28	43	11	13	$\phi 11-\phi 200$	$\phi 62-\phi 190$	18.1
NBK-10	315	255	73	20	190	210	80	6	3-M12	93	32	52	12	16	$\phi 12-\phi 250$	$\phi 72-\phi 240$	27.9
NBK-12	370	305	80	22	250	285	105	5	3-M12	118	40	59	14	18	$\phi 15-\phi 300$	$\phi 86-\phi 290$	42.9

BP

BPA

BC

CP

SU

PT

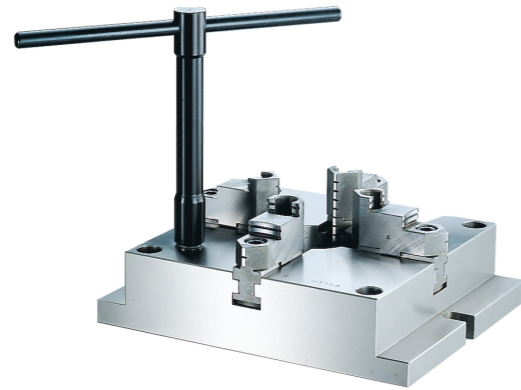
SVF

ALV

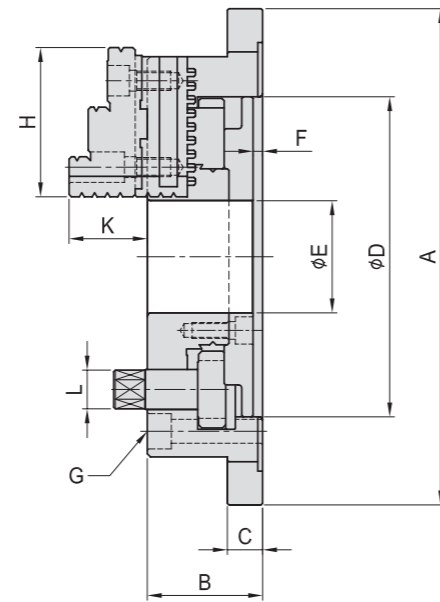
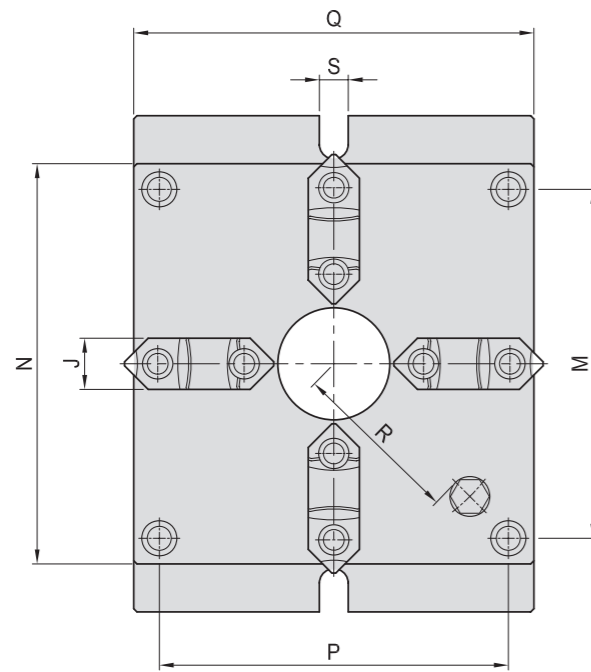
OK-
VISE

OTHER

Column
for
Technical
Data



- MC chucks are precisely ground, the tolerances of W,X,Y,Z among chucks are within 0.05mm.
- Soft jaws can be used alternatively for machining special shaped work pieces, to substitute for designing and making a lot of jigs for this purpose.
- The repetitive gripping accuracy with the hard jaws are within 0.02mm.
- Parallel gripping accuracy with hard jaws can be controlled within 0.05mm after aligning sides of chucks.



SPEC./MODEL	A	B	C	D	E	F	G	H	J	K	L	M	N	P	Q	R	S	Max. Dia Gripped by		kg	
																		external	internal		
MCA-06	215	57	18	130	40	5.5	4-M10	68	26	39	14	144	165	144	165	66	18		φ4-φ128	φ55-φ128	11.4
MCA-08	250	65	20	160	55	6.0	4-M12	82	28	43	17	174	200	174	200	83	18		φ5-φ162	φ62-φ162	18.6
MCA-10	310	72	22	200	70	6.0	4-M14	93	32	50	21	218	250	218	250	104	18		φ6-φ200	φ72-φ200	31.6
MCA-12	380	85	25	260	100	7.0	4-M16	117	40	56	23	274	310	274	310	135	22		φ10-φ265	φ90-φ265	56.6

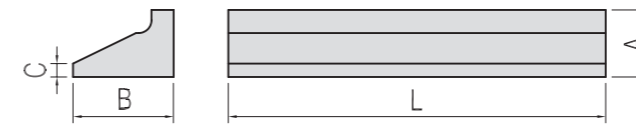


- Material: S45C(JIS) / CK45(DIN)
- Heat treated: HRC 45°.
- Accuracy: A ± 0.01
B ± 0.01
C ± 0.5

BASE



PARTS



Content	BASE SIZE			PARTS SIZE				Q'ty of each set	kg (1)
	A	B	C	A	B	C	L		
GP102-05	5	16	100	-	-	-	-	2	1 SET/11.6
GP102-06	6	18	100	-	-	-	-	2	
GP102-08	8	24	100	-	-	-	-	2	
GP102-10	10	30	100	-	-	-	-	2	
GP102-12	12	36	150	-	-	-	-	2	
GP102-14	14	48	150	-	-	-	-	2	
GP102-18	18	60	150	-	-	-	-	2	
GP102-22	22	62	150	-	-	-	-	2	
GP102-24				15	31	2.5	200	2	

*Sell as a set !



A series of horizontal blue lines for writing, spanning the width of the page.