



ALV

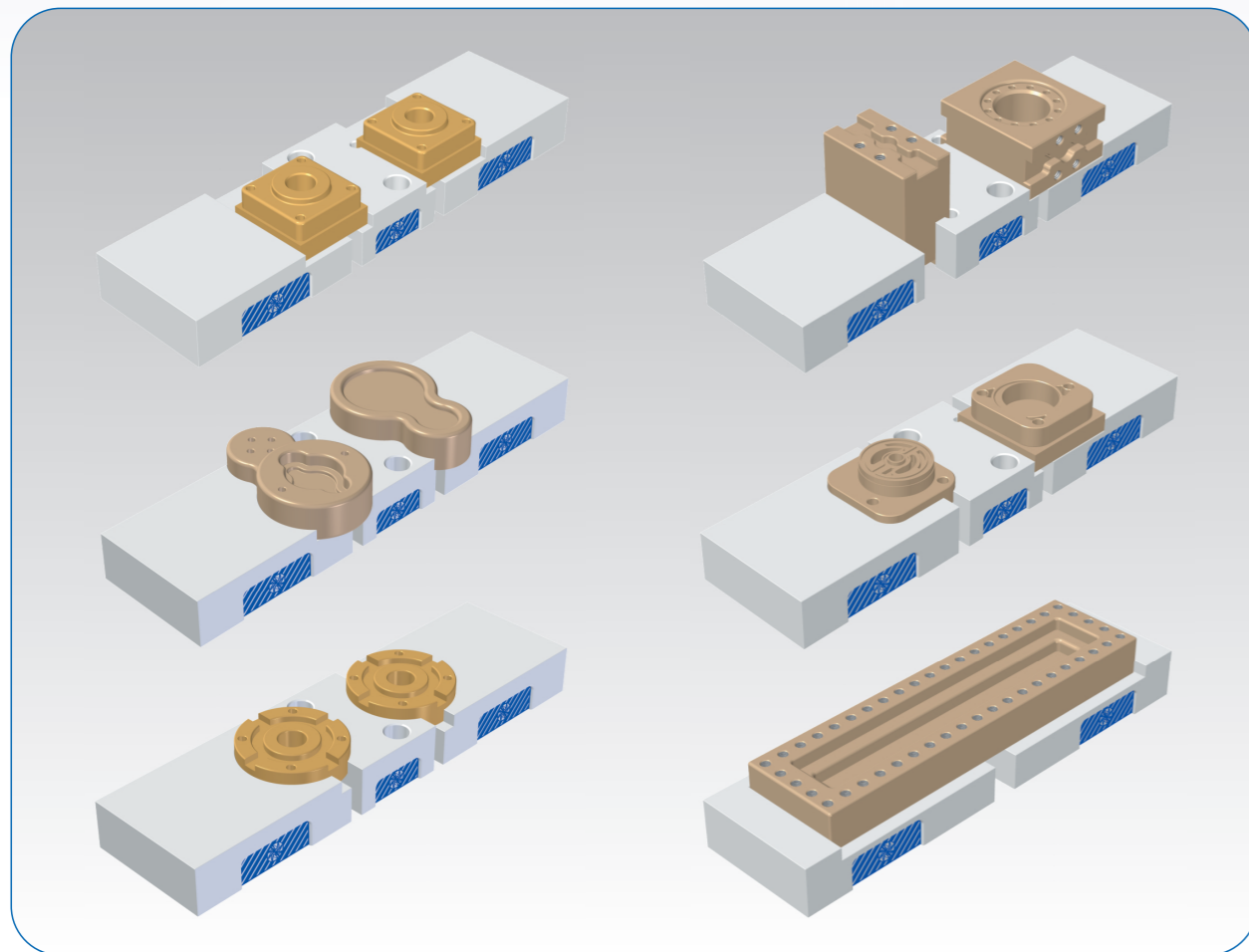
HIGH STRENGTH ALUMINUM LINE UP VISE

We are pleased to present to you our newly designed ALV Vise series. Many new features have been added to streamline the work holding process. The ALV vise will optimize your workspace, speed up cycle time and will give an overall increase in production. We have added quick change snap-in jaws and a rapid 1 part - 2 part change over system. As an added feature all internal parts are sealed to prevent chip contamination.



**LOWEST COST
HIGHEST QUALITY
100% SATISFACTION GUARANTEE**

Clamping Examples

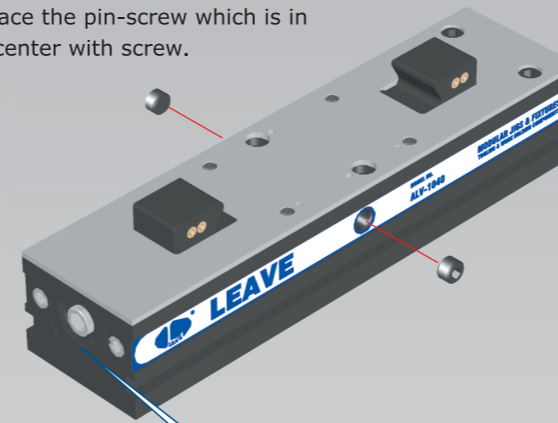


ALV

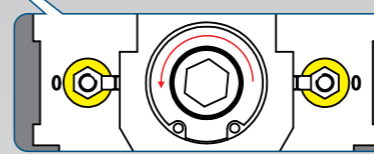
HIGH STRENGTH ALUMINUM LINE UP VISE

To Clamp Two Workpiece

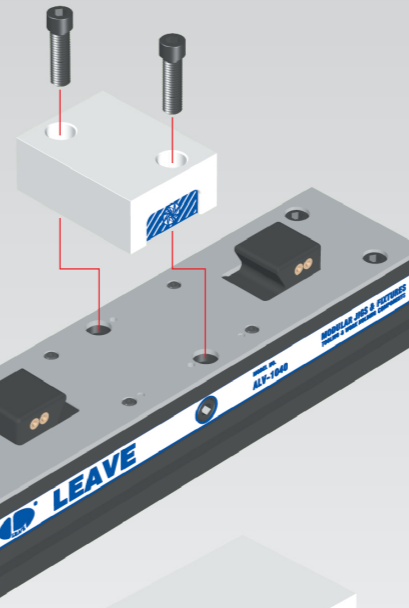
1 Replace the pin-screw which is in the center with screw.



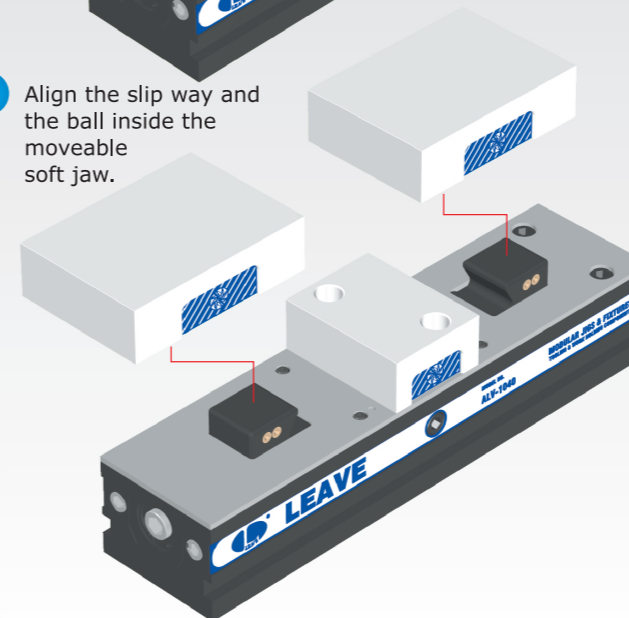
2 Turn counterclockwise the bolt to the end and turn the model to "I" which is on the side of the main body.



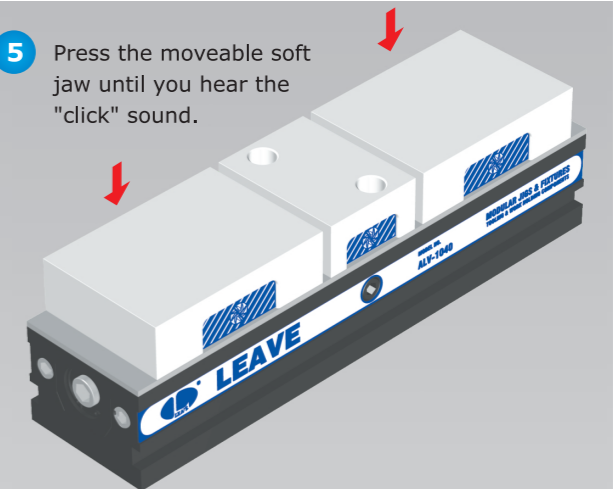
3 Install the fixed soft jaw and close it completely.



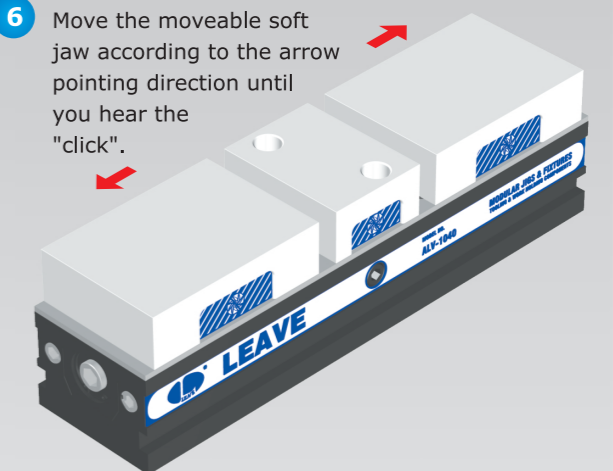
4 Align the slip way and the ball inside the moveable soft jaw.



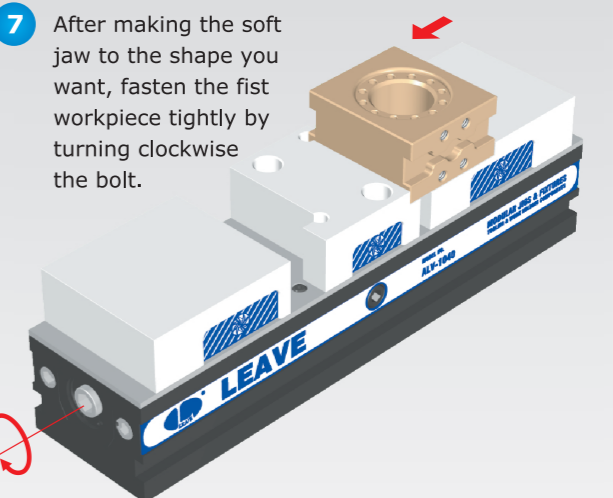
5 Press the moveable soft jaw until you hear the "click" sound.



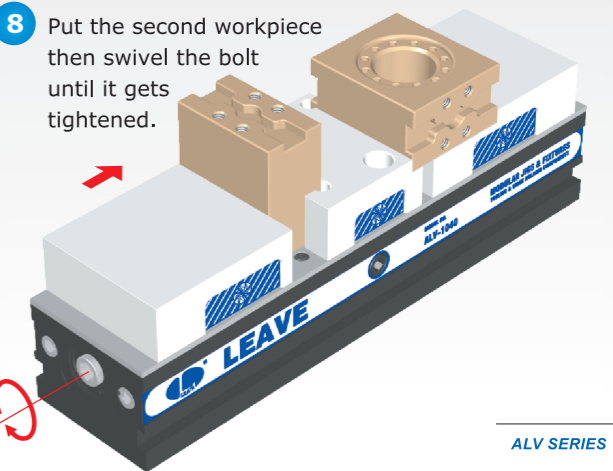
6 Move the moveable soft jaw pointing direction until you hear the "click".



7 After making the soft jaw to the shape you want, fasten the first workpiece tightly by turning clockwise the bolt.



8 Put the second workpiece then swivel the bolt until it gets tightened.



BP

BPA

BC

CP

SU

PT

SVF

ALV

OK-
VISE

OTHER

Column
for
Technical
Data

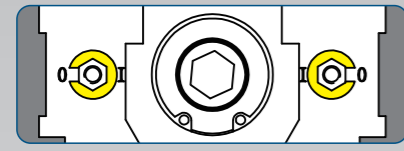
ALV HIGH STRENGTH ALUMINUM LINE UP VISE

ALV HIGH STRENGTH ALUMINUM LINE UP VISE

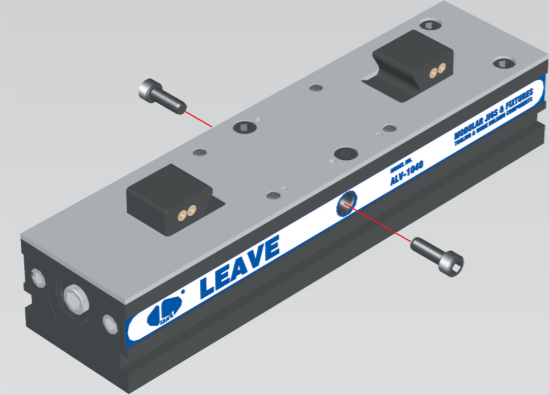
To Clamp One Workpiece

Application for Quick Fixture Base

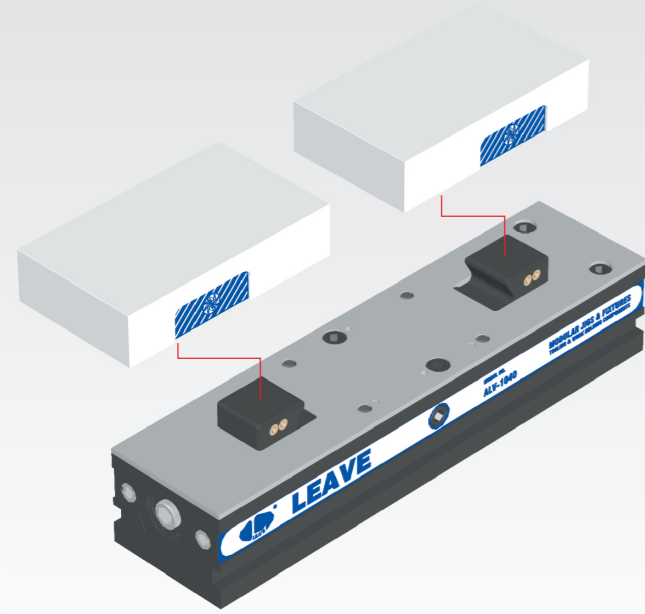
1 Turn the model to "O" which is on the side of the main body.



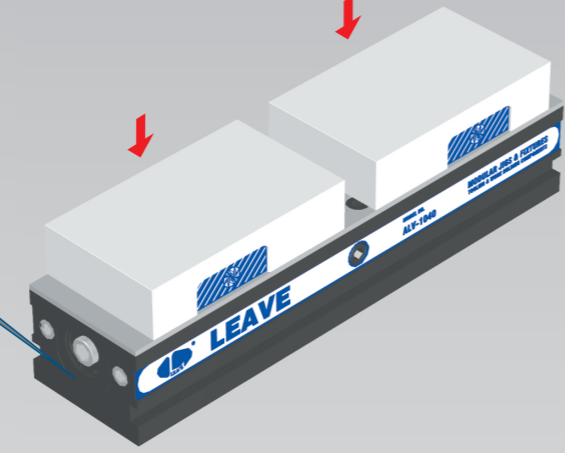
2 Turn counterclockwise the bolt to the end and replace the screw with pin-screw.



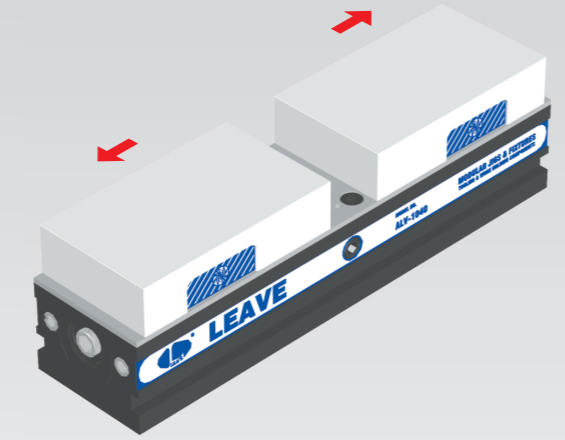
3 Align the slip way and the ball inside the moveable soft jaw.



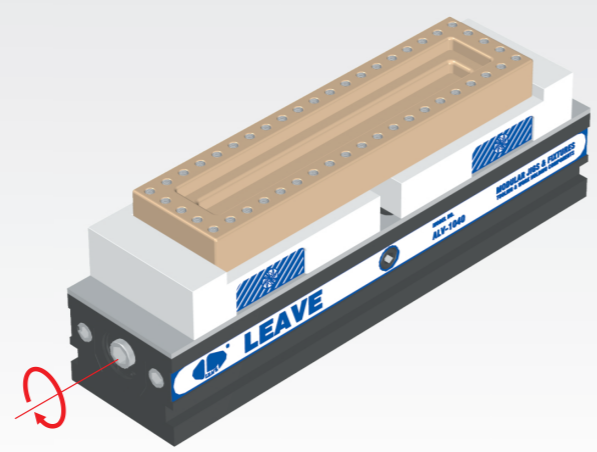
4 Press the moveable soft jaw until you hear the "click" sound.



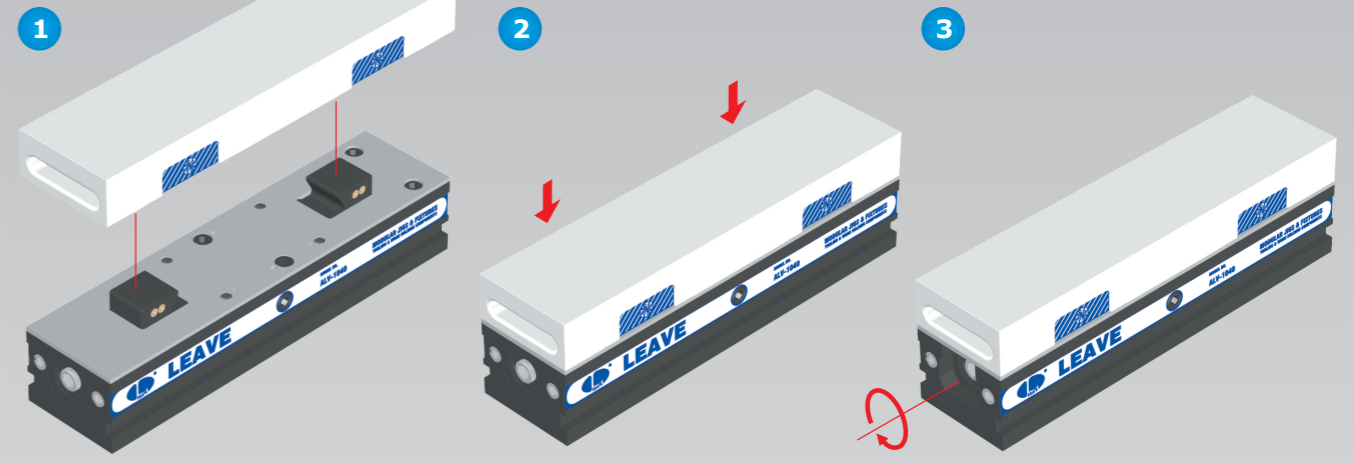
5 Move the moveable soft jaw according to the arrow pointing direction until you hear the "click".



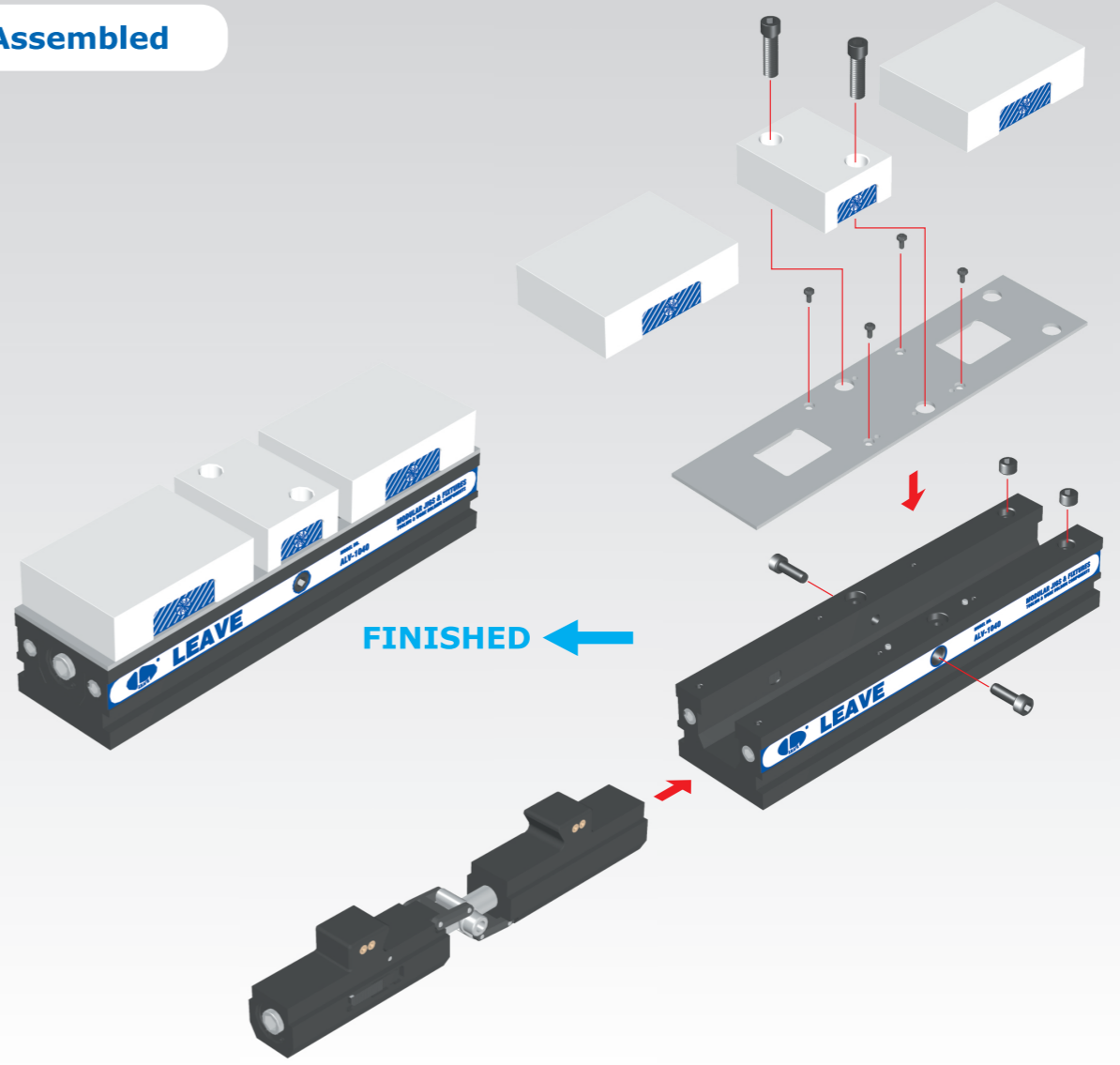
6 After making the soft jaw to the shape you want, the workpiece is clamped.



- Quickly convert the vise into a fixture base.
- Tightening the vise screw locks the fixture base in place.



Assembled



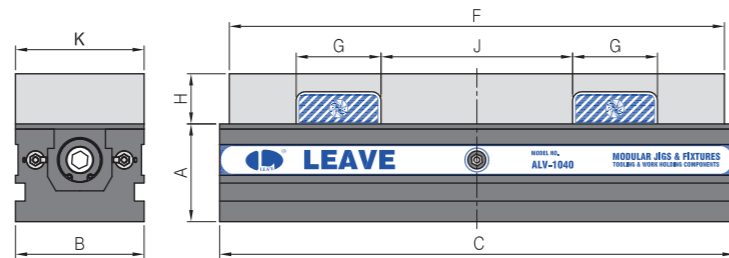
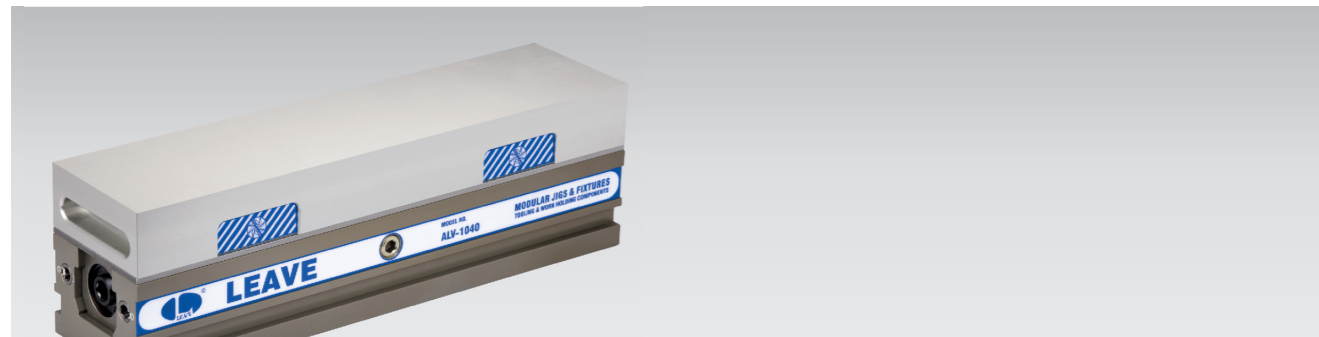
- BP
- BPA
- BC
- CP
- SU
- PT
- SVF
- ALV**
- OK-VISE
- OTHER
- Column for Technical Data



ALV

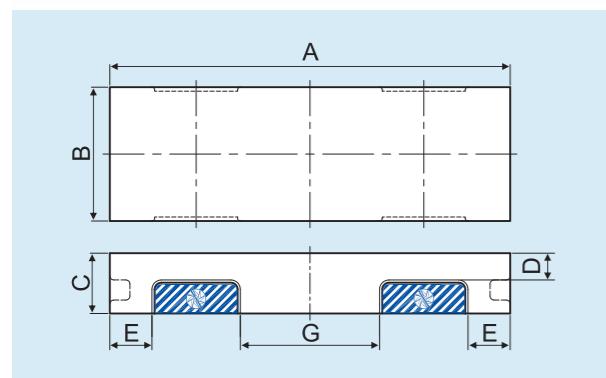
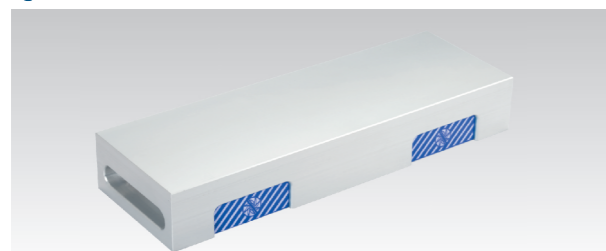
HIGH STRENGTH ALUMINUM LINE UP VISE

- Material: High strength aluminum A7075 (Hard coat surface)
Tool steel (Hardness: over HRC 55°)
- Application: Ideal for aluminum or irregular shaped work pieces.



MODEL NO.	A	B	C	F	G	H	J	K	kg
ALV-0620-0	64	60	200	199	43	21	72.0	60	2.9
ALV-1030-0	76	100	300	299	66	45	104.0	100	9.8
ALV-1030-0H						54		10.6	
ALV-1030-0W						45		11.7	
ALV-1030-0WH						54		12.8	
ALV-1040-0	76	100	400	399	66	45	149.0	100	14.0
ALV-1040-0H						54		14.9	
ALV-1040-0W						45		16.1	
ALV-1040-0WH						54		16.8	
ALV-1550-0	95	150	500	499	89	49	198.5	150	29.5
ALV-1550-0H						59		32.3	
ALV-1550-0W						49		34.1	
ALV-1550-0WH						59		36.3	

Quick Fixture Base



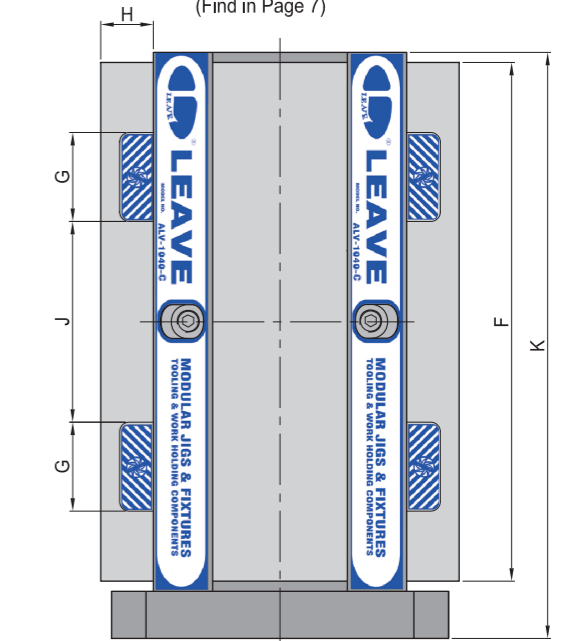
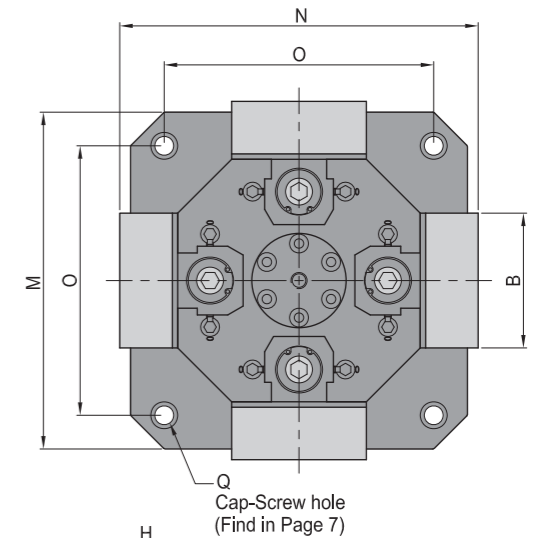
MODEL NO.	A	B	C	D	E	G	kg
ALV-0620-58	199	60	21	3	20.5	72.0	0.75
ALV-1030-58	299	100	45	20	31.5	104.0	3.25
ALV-1030-58H			54	29			4.00
ALV-1030-58W	299	150	45	20	31.5	104.0	5.10
ALV-1030-58WH			54	29			6.20
ALV-1040-58	399	100	45	20	59.0	149.0	4.50
ALV-1040-58H			54	29			5.42
ALV-1040-58W	399	150	45	20	59.0	149.0	6.63
ALV-1040-58WH			54	29			7.30
ALV-1550-58	499	150	49	19	61.3	198.5	10.20
ALV-1550-58H			59	29			11.80
ALV-1550-58W	499	200	49	19	61.3	198.5	13.60
ALV-1550-58WH			59	29			15.80



ALV

HIGH STRENGTH ALUMINUM LINE UP VISE

- Material: High strength aluminum A7075 (Hard coat surface)
Tool steel (Hardness: over HRC 55°)
- Application: Ideal for aluminum or irregular shaped work pieces.



MODEL NO.	B	F	G	H	J	K	M	N	O	Q	kg
ALV-1030-C-0	100	299	66	45	104.0	335	250	278	200	M12	47.00
ALV-1030-C-0H				54				296			50.00
ALV-1030-C-0W				45				278			54.40
ALV-1030-C-0WH	150			54				296			58.80
ALV-1040-C-0	100	399	66	45	149.0	435	250	278	200	M12	60.70
ALV-1040-C-0H				54				296			64.38
ALV-1040-C-0W				45				278			69.22
ALV-1040-C-0WH	150			54				296			71.90
ALV-1550-C-0	150	499	89	49	198.5	545	300	338	250	M16	127.00
ALV-1550-C-0H				59				358			138.20
ALV-1550-C-0W				49				338			145.40
ALV-1550-C-0WH	200			59				358			154.20

*ALL SIZE BASE PLATES ARE AVAILABLE FOR THE ALV VISE.

BP

BPA

BC

CP

SU

PT

SVF

ALV

OK-
VISE

OTHER

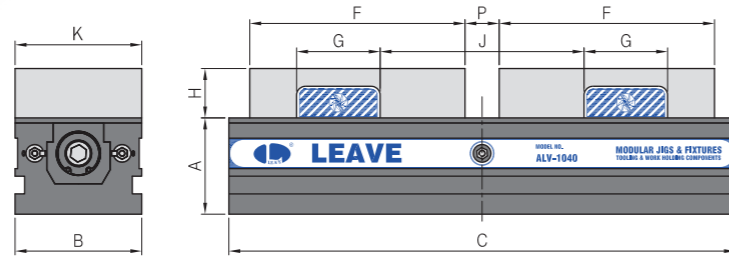
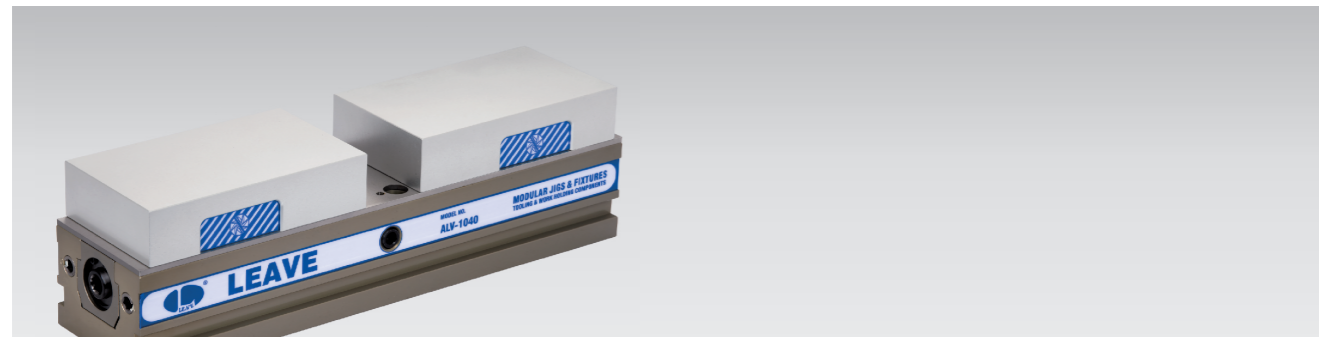
Column
for
Technical
Data



ALV

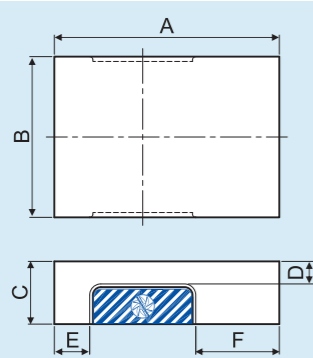
HIGH STRENGTH ALUMINUM LINE UP VISE

- Material: High strength aluminum A7075 (Hard coat surface)
Tool steel (Hardness: over HRC 55°)
- Application: Ideal for aluminum or irregular shaped work pieces.



MODEL NO.	A	B	C	F	G	H	J	K	P	kg
ALV-0620-1						21		60		3.0
ALV-0620-1H	64	60	200	93.0	43	31	68-82		0-14	3.0
ALV-0620-1W						21		80		3.1
ALV-0620-1WH						31				3.4
ALV-1030-1						39		100		9.2
ALV-1030-1H	76	100	300	140.0	66	54	104-124		0-20	10.4
ALV-1030-1W						39		150		10.8
ALV-1030-1WH						54				12.5
ALV-1040-1						39		100		13.0
ALV-1040-1H	76	100	400	170.0	66	54	149-179		15-45	14.3
ALV-1040-1W						39		150		14.7
ALV-1040-1WH						54				16.7
ALV-1550-1						49		150		27.9
ALV-1550-1H	95	150	500	207.5	89	59	175-220		35-80	28.6
ALV-1550-1W						49		200		29.5
ALV-1550-1WH						59				31.3

Extended Movable Soft Jaw



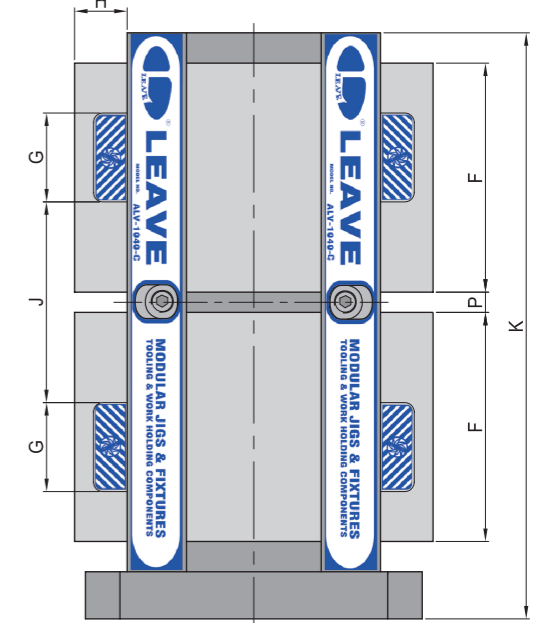
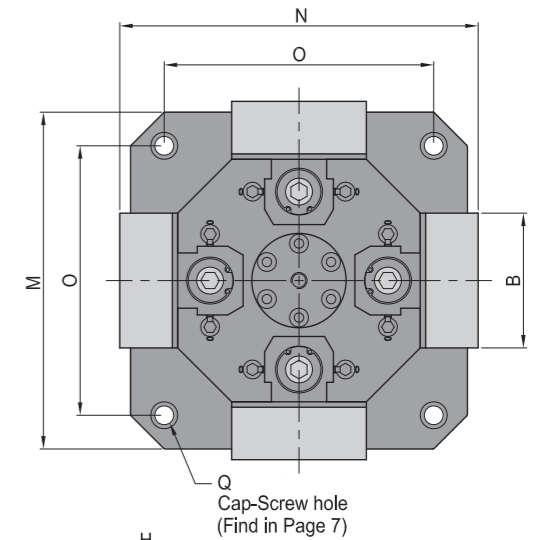
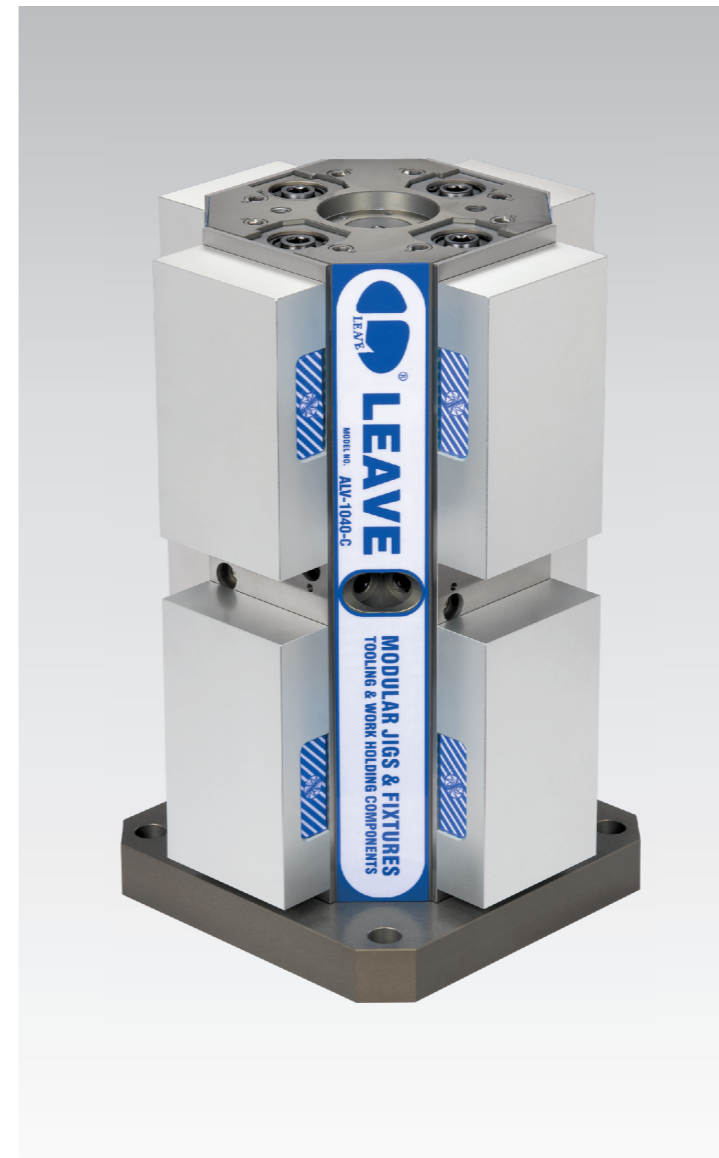
MODEL NO.	A	B	C	D	E	F	kg
ALV-0620-55			21	3			0.24
ALV-0620-55H	93.0	60	31	13	16	34.0	0.35
ALV-0620-55W			21	3			0.38
ALV-0620-55WH	93.0	80	31	13	16	34.0	0.56
ALV-1030-55			39	14			1.30
ALV-1030-55H	140.0	100	54	29	22	52.0	1.90
ALV-1030-55W			39	14			2.10
ALV-1030-55WH	140.0	150	54	29	22	52.0	2.96
ALV-1040-55			39	14			1.62
ALV-1040-55H	170.0	100	54	29	37	67.0	2.38
ALV-1040-55W			39	14			2.60
ALV-1040-55WH	170.0	150	54	29	37	67.0	3.60
ALV-1550-55			49	19			3.36
ALV-1550-55H	207.5	150	59	29	48	70.5	4.04
ALV-1550-55W			49	19			4.48
ALV-1550-55WH	207.5	200	59	29	48	70.5	5.39



ALV

HIGH STRENGTH ALUMINUM LINE UP VISE

- Material: High strength aluminum A7075 (Hard coat surface)
Tool steel (Hardness: over HRC 55°)
- Application: Ideal for aluminum or irregular shaped work pieces.



BP

BPA

BC

CP

SU

PT

SVF

ALV

OK-
VISE

OTHER

Column
for
Technical
Data

MODEL NO.	B	F	G	H	J	K	M	N	O	P	Q	kg
ALV-1030-C-1				39				266				44.40
ALV-1030-C-1H	100			54				296				49.20
ALV-1030-C-1W		140.0	66	39	104-124	335	250	266	200	0-20	M12	50.80
ALV-1030-C-1WH				54				296				57.68
ALV-1040-C-1				39				266				55.66
ALV-1040-C-1H	100			54				296				61.74
ALV-1040-C-1W		170.0	66	39	149-179	435	250	266	200	15-45	M12	63.50
ALV-1040-C-1WH				54				296				71.50
ALV-1550-C-1				49				338				120.60
ALV-1550-C-1H	150			59				358				123.32
ALV-1550-C-1W		207.0	89	49	175-220	545	300	338	250	35-80	M16	126.84
ALV-1550-C-1WH				59				358				134.12

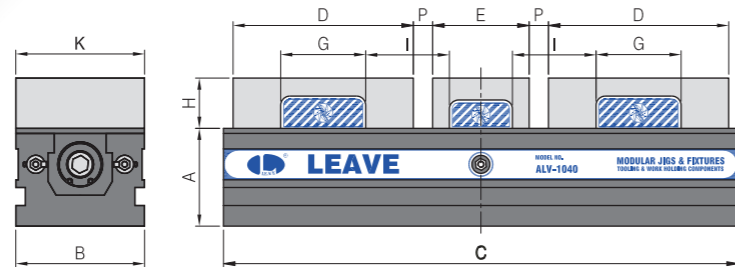
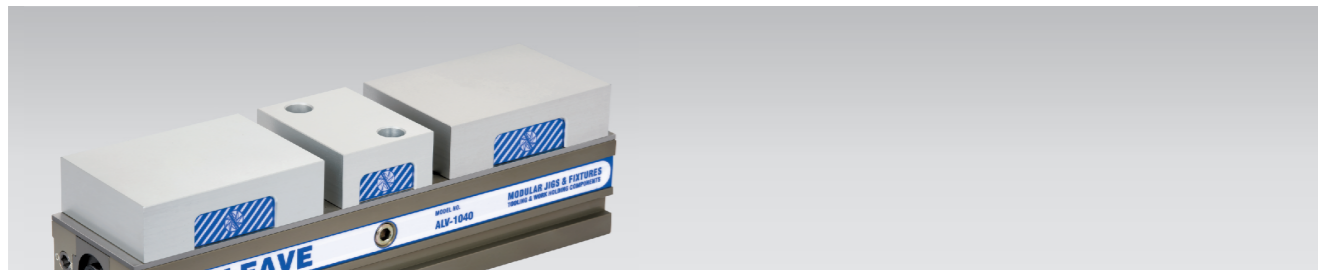
*ALL SIZE BASE PLATES ARE AVAILABLE FOR THE ALV VISE.



ALV

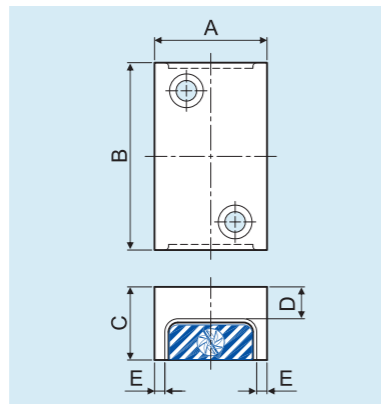
HIGH STRENGTH ALUMINUM LINE UP VISE

- Material: High strength aluminum A7075 (Hard coat surface)
Tool steel (Hardness: over HRC 55°)
- Application: Ideal for aluminum or irregular shaped work pieces.



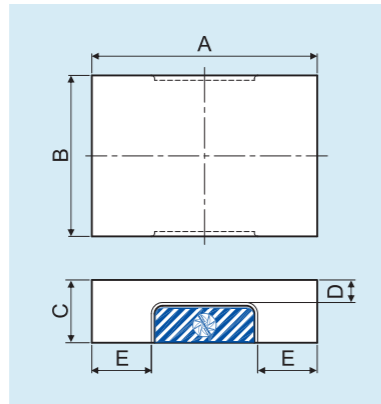
MODEL NO.	A	B	C	D	E	G	H	I	K	P	kg
ALV-0620-2							21		60		2.9
ALV-0620-2H							31	18.0-25.0		0-7.0	3.0
ALV-0620-2WH	64	60	200	75	36	43	31				3.1
ALV-1030-2							39		100		3.0
ALV-1030-2H							54	27.5-37.5		0-10.0	10.3
ALV-1030-2W	76	100	300	110	60	66	39				10.7
ALV-1030-2WH							54		150		12.4
ALV-1040-2							39		100		12.8
ALV-1040-2H							54	50.0-65.0		0-15.0	14.3
ALV-1040-2W	76	100	400	140	75	66	39				14.7
ALV-1040-2WH							54		150		17.0
ALV-1550-2							49		150		28.7
ALV-1550-2H							59	63.5-86.0		0-22.5	30.3
ALV-1550-2W	95	150	500	185	80	89	49				31.5
ALV-1550-2WH							59		200		33.7

Fixed Jaw



MODEL NO.	A	B	C	D	E	kg
ALV-0620-57	36	60	21	7	2.0	0.10
ALV-0620-57H			31	17		0.15
ALV-0620-57W	36	80	21	7	2.0	0.15
ALV-0620-57WH			31	17		0.23
ALV-1030-57	60	100	39	17	5.5	0.60
ALV-1030-57H			54	32		0.80
ALV-1030-57W	60	150	39	17	5.5	0.90
ALV-1030-57WH			54	32		1.25
ALV-1040-57	75	100	39	17	13.0	0.72
ALV-1040-57H			54	32		1.04
ALV-1040-57W	75	150	39	17	13.0	1.14
ALV-1040-57WH			54	32		1.60
ALV-1550-57	80	150	49	21	15.5	1.45
ALV-1550-57H			59	31		1.75
ALV-1550-57W	80	200	49	21	15.5	2.00
ALV-1550-57WH			59	31		2.40

Movable Soft Jaw

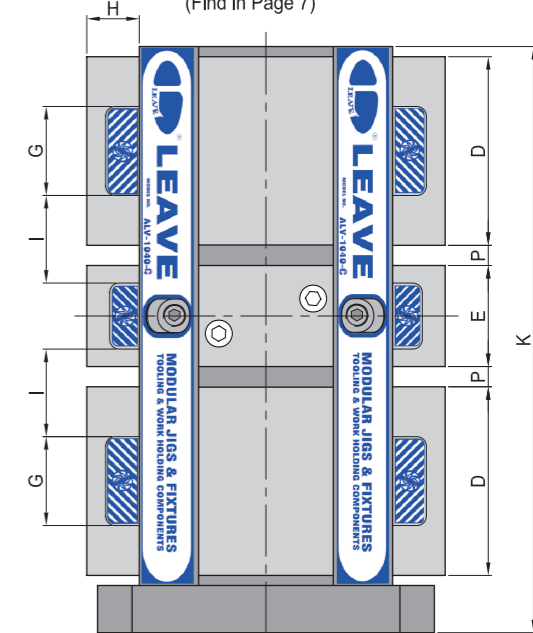
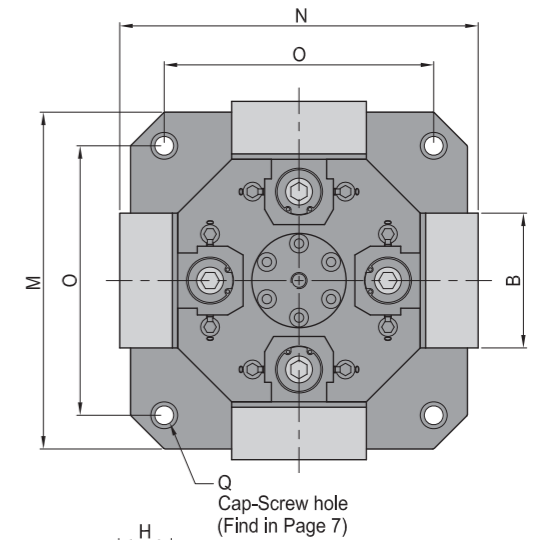
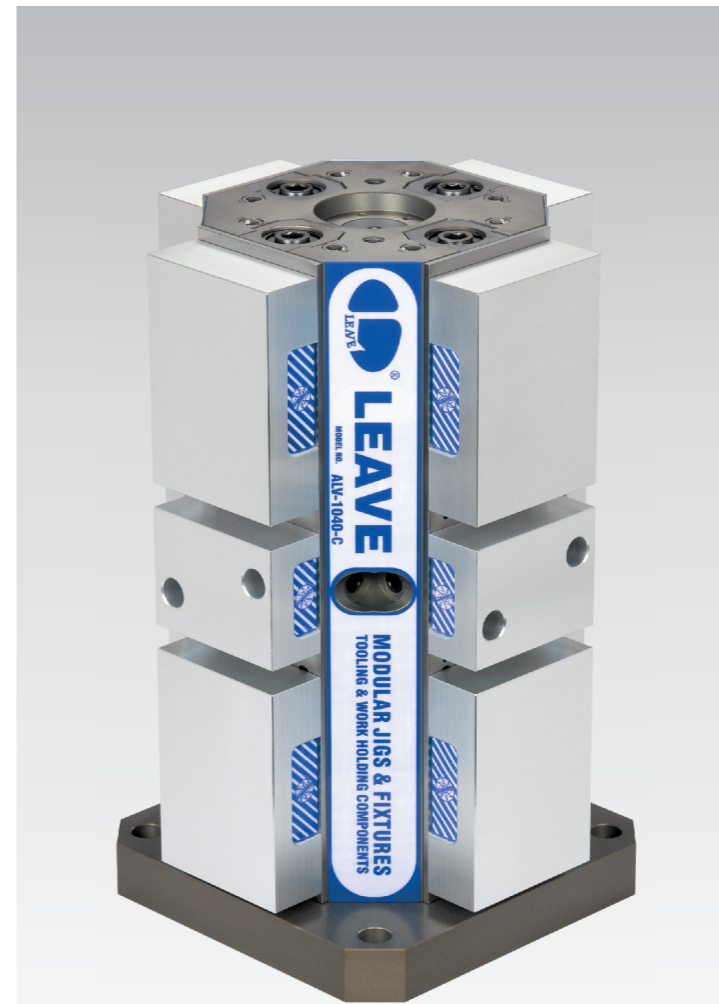


MODEL NO.	A	B	C	D	E	kg
ALV-0620-56	75	60	21	3	16	0.20
ALV-0620-56H			31	13		0.28
ALV-0620-56W	75	80	21	3	16	0.30
ALV-0620-56WH			31	13		0.45
ALV-1030-56	110	100	39	14	22	1.00
ALV-1030-56H			54	29		1.45
ALV-1030-56W	110	150	39	14	22	1.62
ALV-1030-56WH			54	29		2.30
ALV-1040-56	140	100	39	14	37	1.35
ALV-1040-56H			54	29		1.90
ALV-1040-56W	140	150	39	14	37	2.04
ALV-1040-56WH			54	29		2.95
ALV-1550-56	185	150	49	19	48	3.35
ALV-1550-56H			59	29		4.00
ALV-1550-56W	185	200	49	19	48	4.48
ALV-1550-56WH			59	29		5.40

ALV

HIGH STRENGTH ALUMINUM LINE UP VISE

- Material: High strength aluminum A7075 (Hard coat surface)
Tool steel (Hardness: over HRC 55°)
- Application: Ideal for aluminum or irregular shaped work pieces.



MODEL NO.	B	D	E	G	H	I	K	M	N	O	P	Q	kg
ALV-1030-C-2	100	110	60	66	39	27.5-37.5	335	250	266	200	0-10.0	M12	44.40
54					296								48.80
ALV-1030-C-2H	150				39				266				50.56
54					296								57.40
ALV-1040-C-2	100	140	75	66	39	50.0-65.0	435	250	266	200	0-15.0	M12	56.38
54					296								62.06
ALV-1040-C-2H	150				39				266				63.58
54					296								72.70
ALV-1550-C-2	150	185	80	89	49	63.5-86.0	545	300	338	250	0-22.5	M16	123.60
59					358								130.00
ALV-1550-C-2H	200				49				338				134.84
59					358								143.80

*ALL SIZE BASE PLATES ARE AVAILABLE FOR THE ALV VISE.

BP

BPA

BC

CP

SU

PT

SVF

ALV

OK-
VISE

OTHER

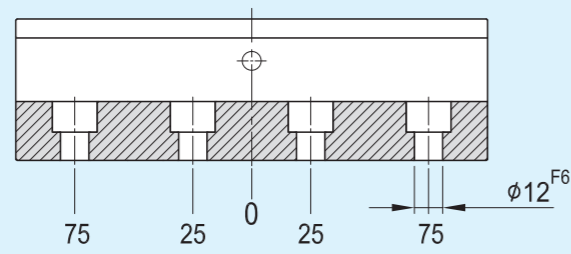
Column
for
Technical
Data

ALV

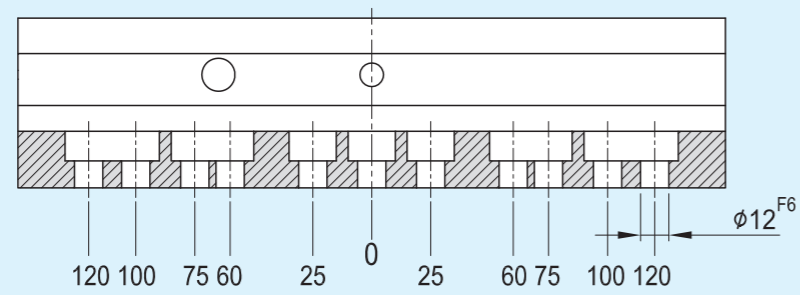
**HIGH STRENGTH
ALUMINUM LINE UP VISE**

The locating mounting holes for ALV main body

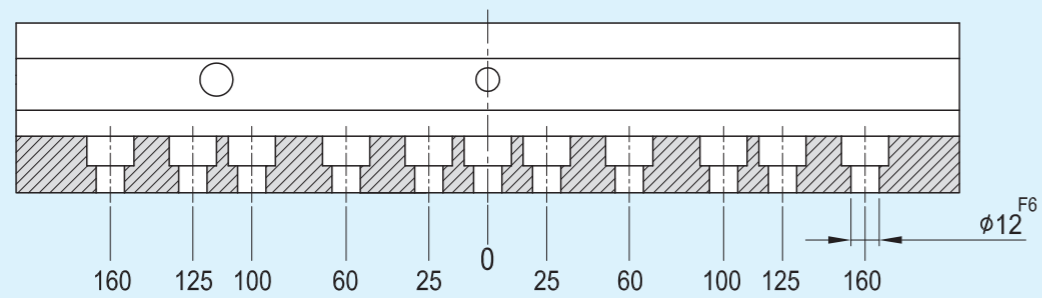
ALV-0620



ALV-1030



ALV-1040



ALV-1550

