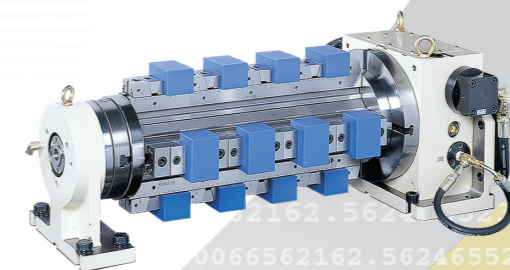
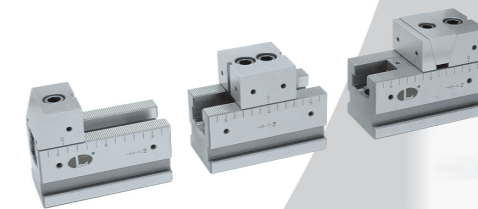
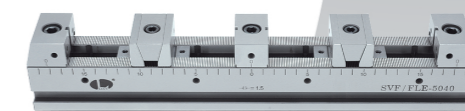
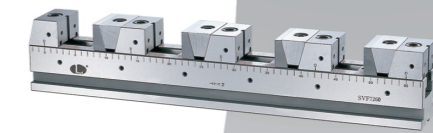


SVF SERIES MODULAR VISE SYSTEM

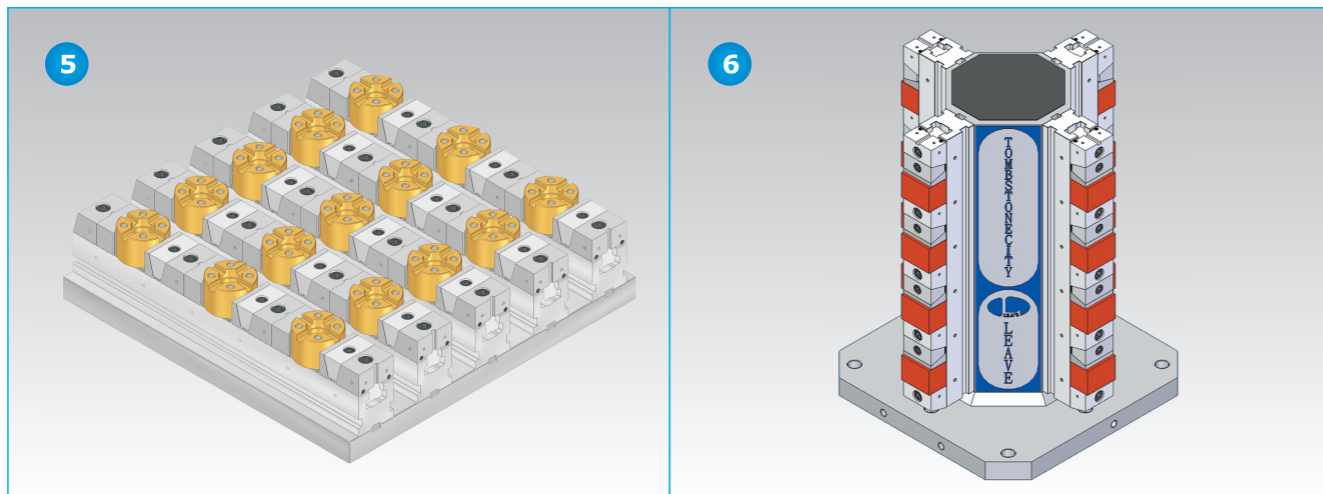
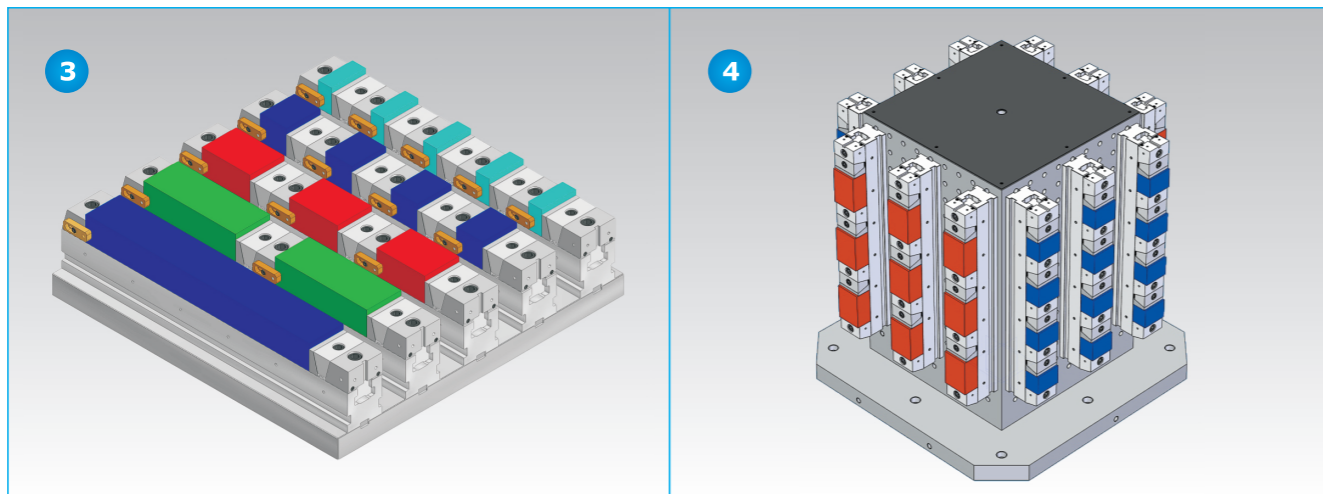
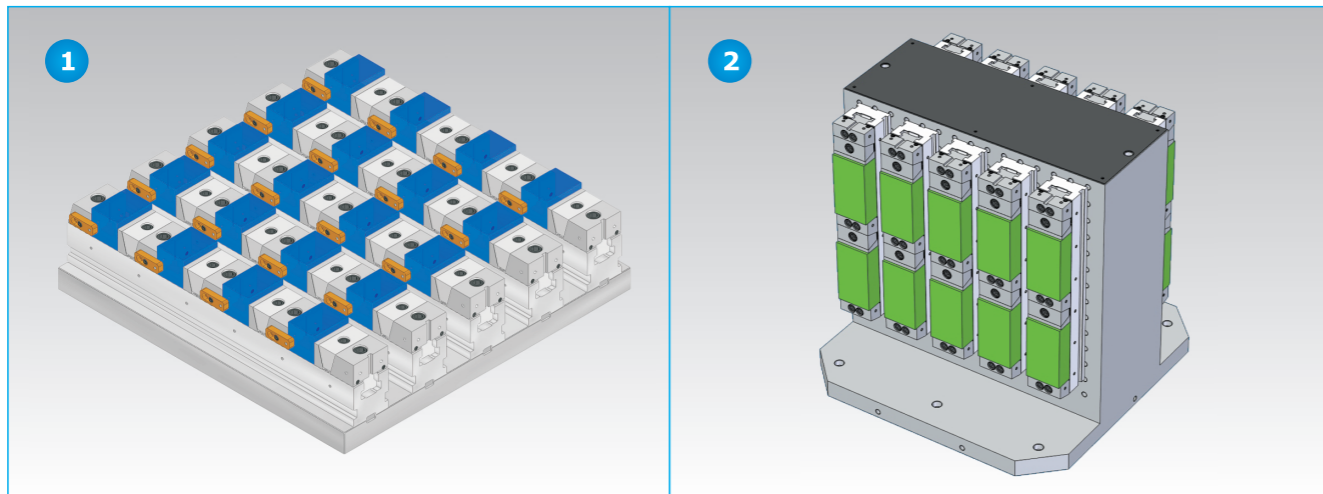
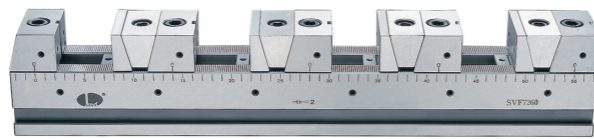
SVF-A,B,BE,C, SVF-CB, SVFX



INDEXING TABLE
M/C OCTAGONAL CUBE
FLEXIBLE LINE UP VISE SERIES

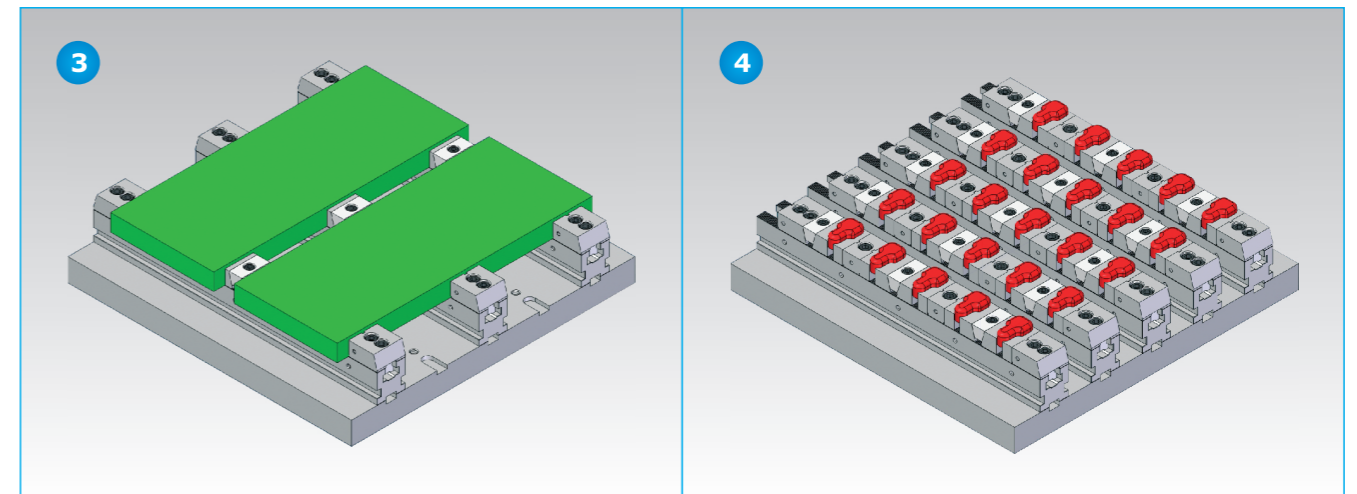
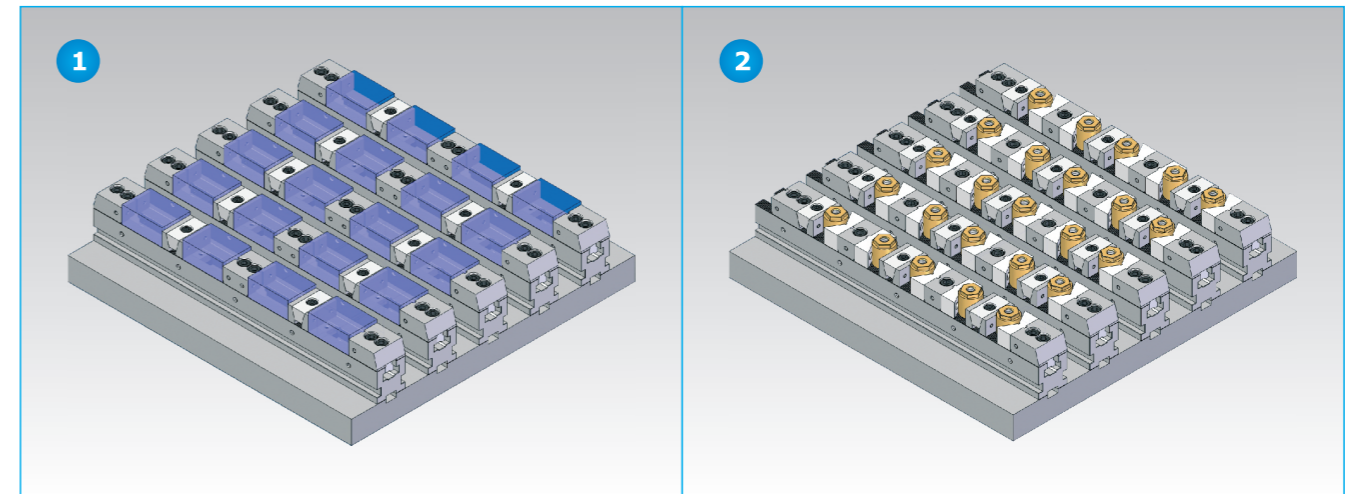
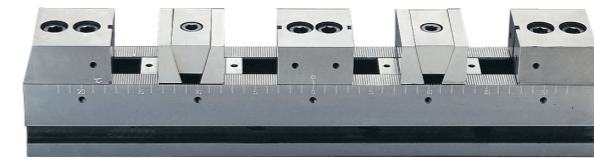
SVF-A One Direction Clamping

Clamping Examples



SVF-B Bi-direction Clamping

Clamping Examples



BP

BPA

BC

CP

SU

PT

SVF

ALV

OK-VISE

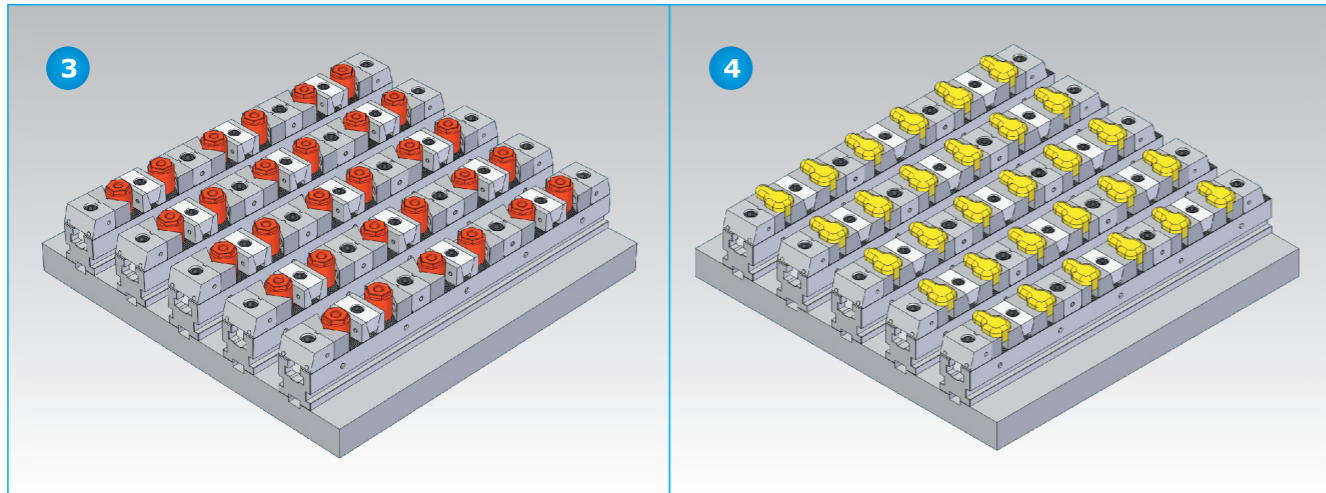
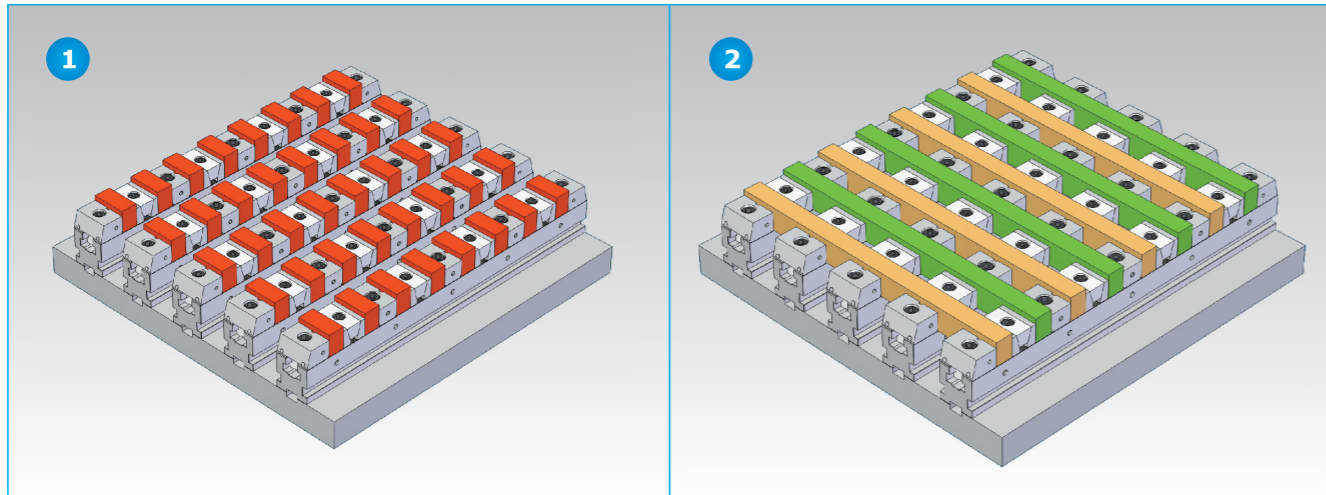
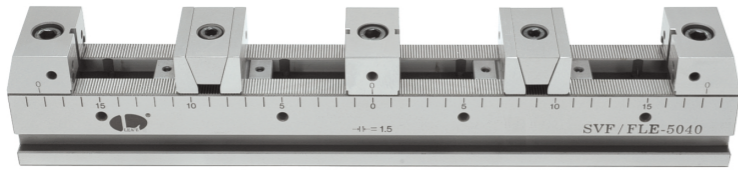
OTHER

Column for Technical Data

SVF-BE

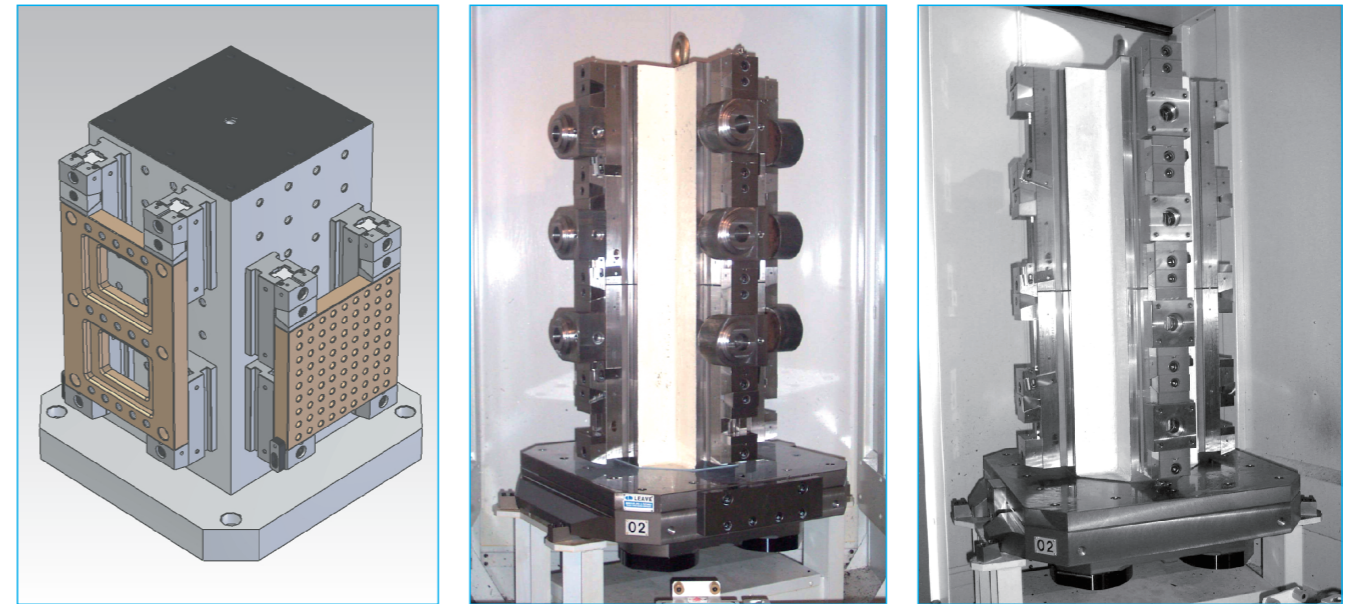
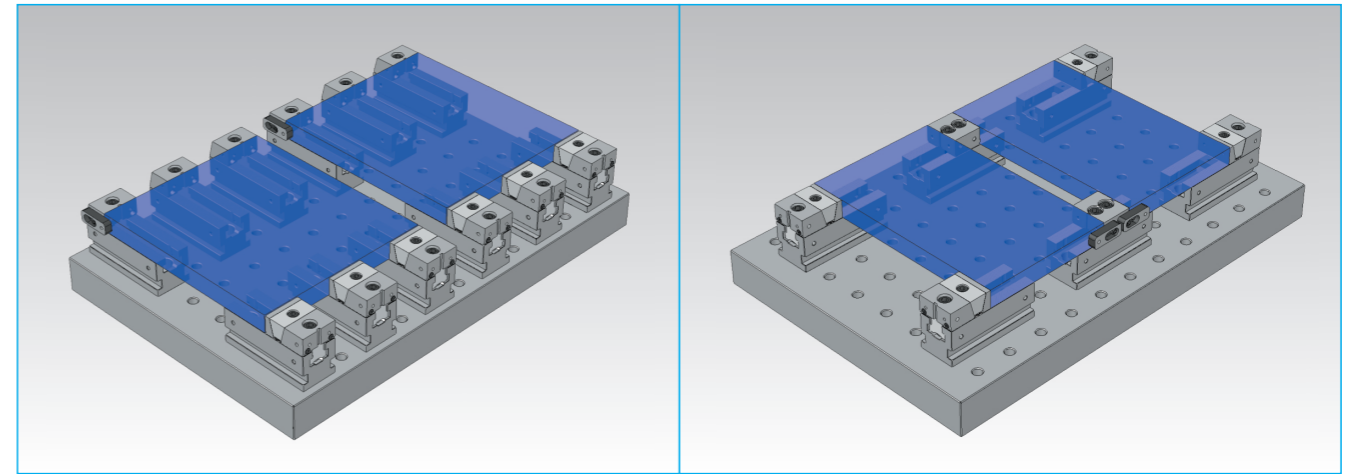
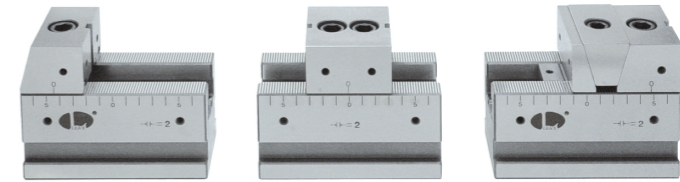
Bi-direction Clamping

Clamping Examples



SVF-C

Clamping Examples



BP

BPA

BC

CP

SU

PT

SVF

ALV

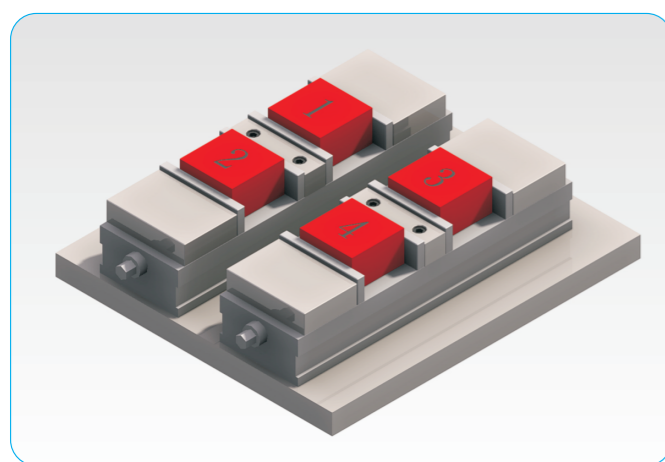
OK-VISE

OTHER

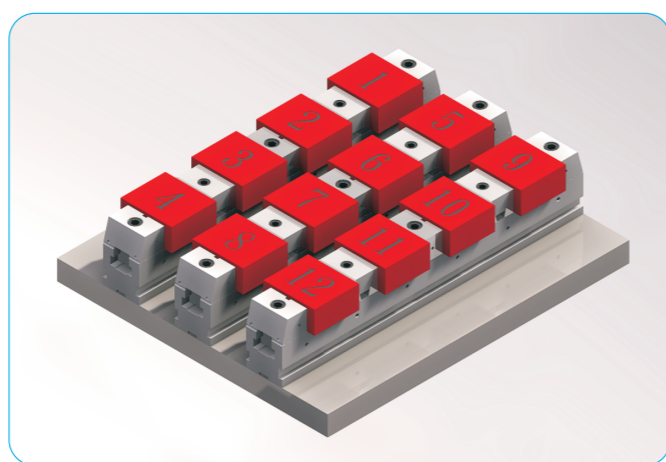
Column for Technical Data

The SVF vise system will:

- Optimize your machine real estate to the fullest extent
- Increase production
- Streamline the work holding process
- Give you a true competitive edge



Traditional vise



SVF series vise

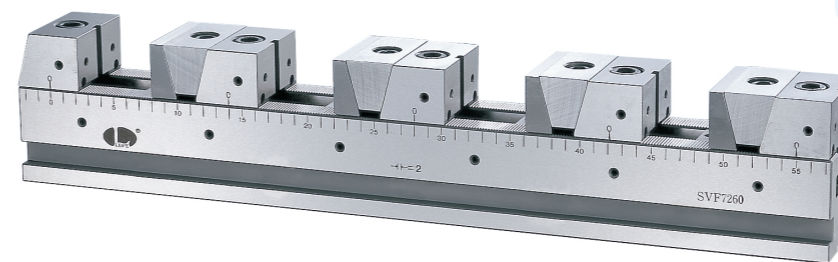
SVF-50 : 1000 kgf
Clamping force: SVF-72 : 2000 kgf
SVF-100: 3000 kgf

SVF-A type vs SVF-B type

Type		SVF-A	SVF-B
Common features	1	Can accommodate a wide range of part quantities & sizes.	
	2	Can accommodate both regular & irregular shaped parts.	
Differences	1	One way clamping.	Two way clamping.
	2	For both of Vertical and Horizontal Machine	For Vertical Machine only.

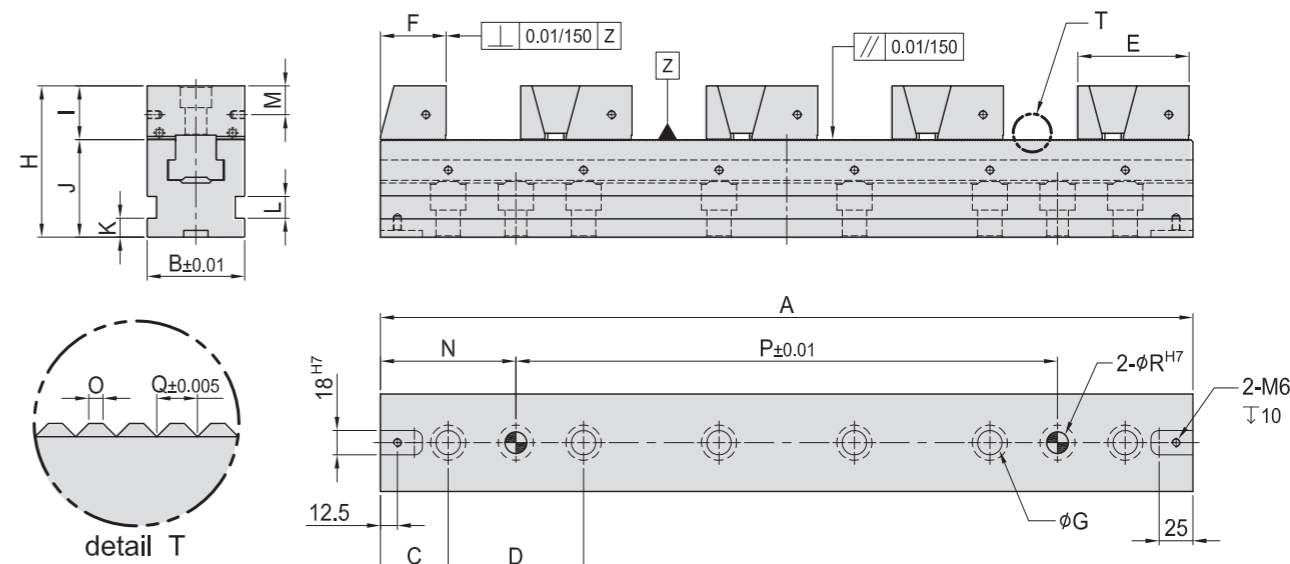
SVF-A FLEXIBLE LINE UP VISE SERIES

- One way clamping**
- Material 100% tool steel
 - Heat treated HRC 55° & ground



High Capacity
High Flexibility

Clamping force:
 SVF-50 : 1000 kgf
 SVF-72 : 2000 kgf
 SVF-100: 3000 kgf



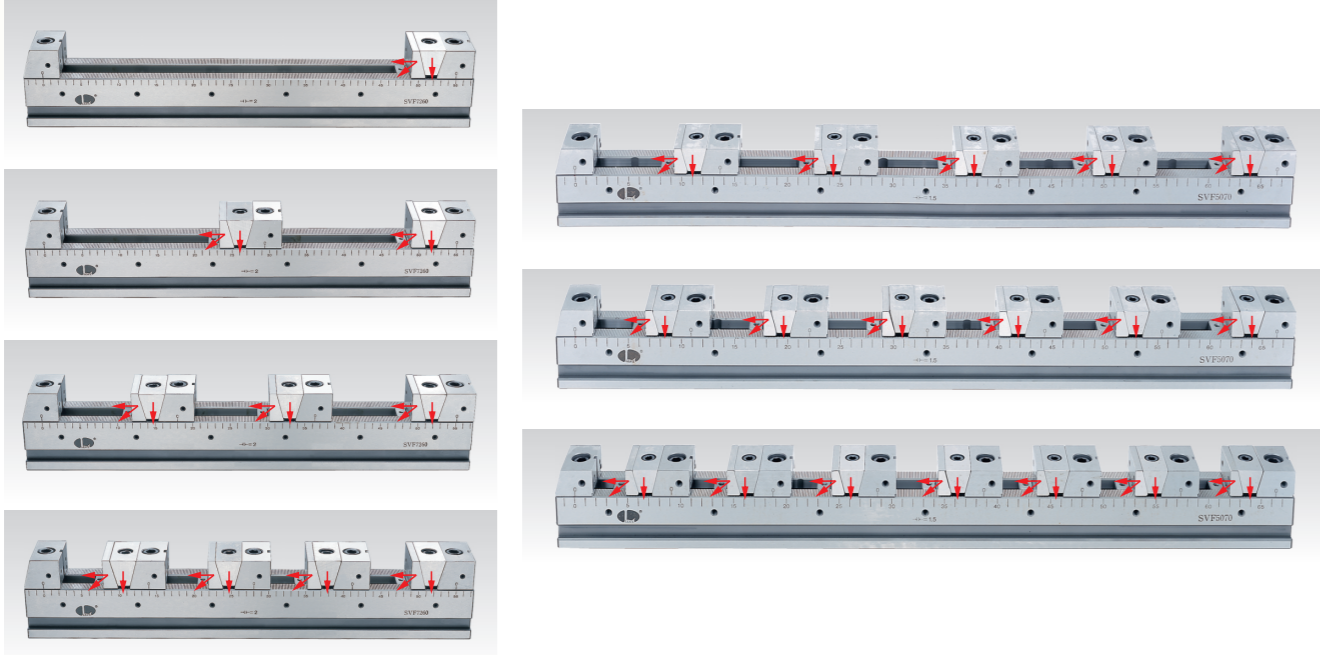
MODEL NO.	A	B	C	D	E	F	G	H	I	J	K	L	M	N	O	P	Q	R	kg	
SVF-A-5030-80*	300	50	30	80	60.6	35	14	75	24.8	50	10	12	12.5	70	160	1.5	12	6.5		
SVF-A-5030-100*			100	100																
SVF-A-5040-80	400	50	40	80	60.6	35	14	75	24.8	50	10	12	12.5	80	240	1.5	12	8.5		
SVF-A-5040-100			100	200																
SVF-A-5050-80	500	50	50	80	60.6	35	14	75	24.8	50	10	12	12.5	90	320	1.5	12	10.0		
SVF-A-5050-100			100	300																
SVF-A-5060-80	600	50	60	80	60.6	35	14	75	24.8	50	10	12	12.5	100	400	1.5	12	11.5		
SVF-A-5060-100			100	400																
SVF-A-5070-80	700	50	70	80	60.6	35	14	75	24.8	50	10	12	12.5	110	480	1.5	12	13.0		
SVF-A-5070-100			100	500																
SVF-A-7240-100*	400	72	50	100	82.2	48	18	112	39.7	72	14	16	21.3	100	0.70	200	2.0	16	19.0	
SVF-A-7250-100	500															300				
SVF-A-7260-100	600	72	50	100	82.2	48	18	112	39.7	72	14	16	21.3	100	0.70	400	2.0	16	27.0	
SVF-A-7270-100	700															500				
SVF-A-10040-100*	400	100	50	100	93.2	48	18	115	43.1	72	14	16	22.2	100	0.85	200	2.5	16	29.0	
SVF-A-10050-100	500															300				
SVF-A-10060-100	600	100	50	100	93.2	48	18	115	43.1	72	14	16	22.2	100	0.85	400	2.5	16	41.0	
SVF-A-10070-100	700															500				

(SVF vises listed above come equipped to clamp 1-4 parts, if additional part clamping is required please order optional accessories as listed on pages 7-14 ~ 7-19)
 * these units will only hold up to 3 parts.

- BP
- BPA
- BC
- CP
- SU
- PT
- SVF
- ALV
- OK-VISE
- OTHER
- Column for Technical Data

SVF-A

Forcing direction



Maximum width of the workpieces which can be clamped

MODEL NO.	1 pcs	2 pcs	3 pcs	4 pcs
SVF-A-5030	203	71	27	--
SVF-A-5040	303	121	60	30
SVF-A-5050	403	171	94	55
SVF-A-5060	503	221	127	80
SVF-A-5070	603	271	160	105
SVF-A-7240	269	93	35	--
SVF-A-7250	369	143	68	30
SVF-A-7260	469	193	101	55
SVF-A-7270	569	243	135	80
SVF-A-10040	258	82	24	--
SVF-A-10050	358	132	57	19
SVF-A-10060	458	182	90	44
SVF-A-10070	558	232	124	69

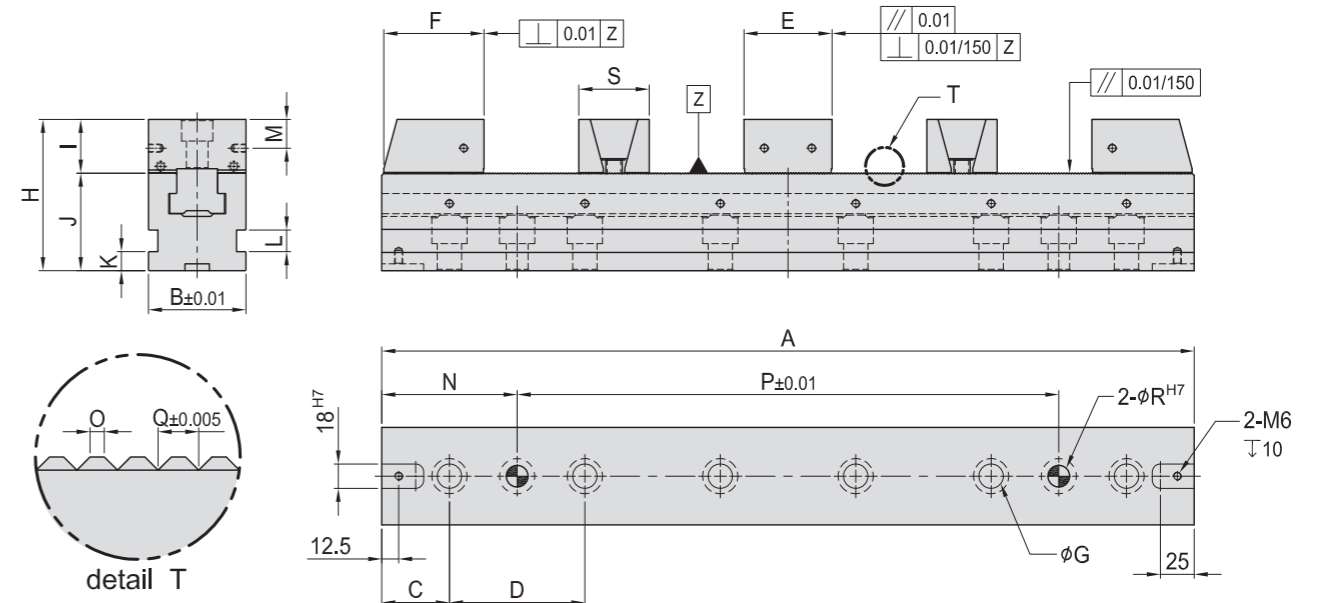
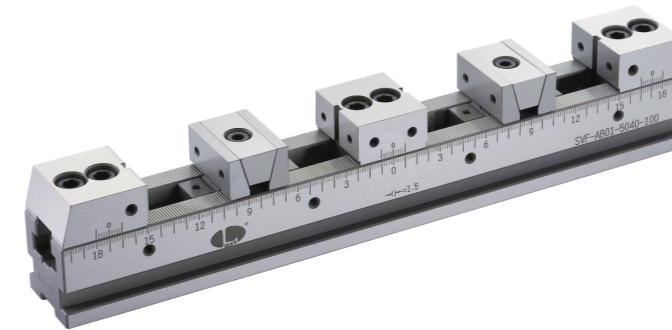
MODEL NO.	5 pcs	6 pcs	7 pcs	8 pcs	9 pcs
SVF-A-5030	--	--	--	--	--
SVF-A-5040	--	--	--	--	--
SVF-A-5050	32	16	--	--	--
SVF-A-5060	52	33	20	--	--
SVF-A-5070	72	50	34	22	13
SVF-A-7240	--	--	--	--	--
SVF-A-7250	--	--	--	--	--
SVF-A-7260	28	--	--	--	--
SVF-A-7270	48	26	--	--	--
SVF-A-10040	--	--	--	--	--
SVF-A-10050	--	--	--	--	--
SVF-A-10060	17	--	--	--	--
SVF-A-10070	37	--	--	--	--

SVF-B FLEXIBLE LINE UP VISE SERIES

- Two way clamping
- Material 100% tool steel
 - Heat treated HRC 55° & ground

**High Capacity
High Flexibility**

SVF-50 : 1000 kgf
amping force: SVF-72 : 2000 kgf
SVF-100: 3000 kgf



MODEL NO.	A	B	C	D	E	F	G	H	I	J	K	L	M	N	O	P	Q	R	S	kg
SVF-B-5030-80	300	50	30	80	44	50	14	75	24.8	50	10	12	12.5	70	0.50	160	1.5	12	36	6.5
SVF-B-5030-100			100	100																
SVF-B-5040-80	400	50	40	80	44	50	14	75	24.8	50	10	12	12.5	80	0.50	240	1.5	12	36	7.6
SVF-B-5040-100			100	200																
SVF-B-5050-80	500	50	50	80	44	50	14	75	24.8	50	10	12	12.5	90	0.50	320	1.5	12	36	9.0
SVF-B-5050-100			100	300																
SVF-B-5060-80	600	50	60	80	44	50	14	75	24.8	50	10	12	12.5	100	0.50	400	1.5	12	36	10.5
SVF-B-5060-100			100	100																
SVF-B-5070-80	700	50	70	80	44	50	14	75	24.8	50	10	12	12.5	110	0.50	480	1.5	12	36	12.0
SVF-B-5070-100			100	500																
SVF-B-7240-100	400	72	50	100	65	74	18	112	39.7	72	14	16	21.3	100	0.70	200	2.0	16	52	19.0
SVF-B-7250-100	500															300				
SVF-B-7260-100	600	72	50	100	65	74	18	112	39.7	72	14	16	21.3	100	0.70	400	2.0	16	52	25.0
SVF-B-7270-100	700															500				
SVF-B-10040-100*	400	100	50	100	70	75	18	115	43.1	72	14	16	22.2	100	0.85	200	2.5	16	65	26.5
SVF-B-10050-100	500															300				
SVF-B-10060-100	600	100	50	100	70	75	18	115	43.1	72	14	16	22.2	100	0.85	400	2.5	16	65	36.6
SVF-B-10070-100	700															500				

(SVF vises listed above come equipped to clamp 1-4 parts, if additional part clamping is required please order optional accessories as listed on pages 7-14 ~ 7-19)
* these units will only hold up to 3 parts.

BP

BPA

BC

CP

SU

PT

SVF

ALV

OK-
VISE

OTHER

Column
for
Technical
Data

SVF-B

Forcing direction



Maximum width of the workpieces which can be clamped

MODEL NO.	1 pcs	2 pcs	3 pcs	4 pcs	5 pcs	6 pcs
SVF-B-5030	176	82	32	21	--	--
SVF-B-5040	276	132	65	46	23	17
SVF-B-5050	376	182	98	71	43	34
SVF-B-5060	476	232	132	96	63	50
SVF-B-5070	576	282	165	121	83	67
SVF-B-7240	217	100	33	20	--	--
SVF-B-7250	317	150	65	45	16	--
SVF-B-7260	417	200	100	70	36	27
SVF-B-7270	517	250	133	95	56	44
SVF-B-10040	204	92	23	--	--	--
SVF-B-10050	304	142	56	37	--	--
SVF-B-10060	404	192	89	62	26	18
SVF-B-10070	504	242	123	87	46	35

MODEL NO.	7 pcs	8 pcs	9 pcs	10 pcs	11 pcs
SVF-B-5030	--	--	--	--	--
SVF-B-5040	--	--	--	--	--
SVF-B-5050	19	15	--	--	--
SVF-B-5060	33	28	17	14	--
SVF-B-5070	48	40	28	24	16
SVF-B-7240	--	--	--	--	--
SVF-B-7250	--	--	--	--	--
SVF-B-7260	--	--	--	--	--
SVF-B-7270	23	18	--	--	--
SVF-B-10040	--	--	--	--	--
SVF-B-10050	--	--	--	--	--
SVF-B-10060	--	--	--	--	--
SVF-B-10070	--	--	--	--	--

SVF-BE

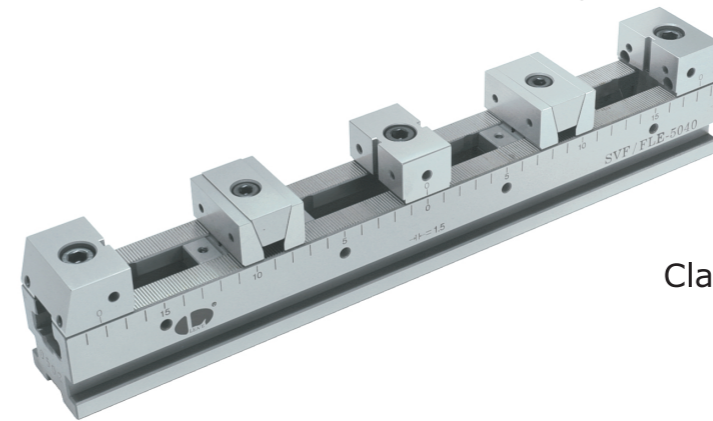
Two way clamping

FLEXIBLE LINE UP VISE SERIES

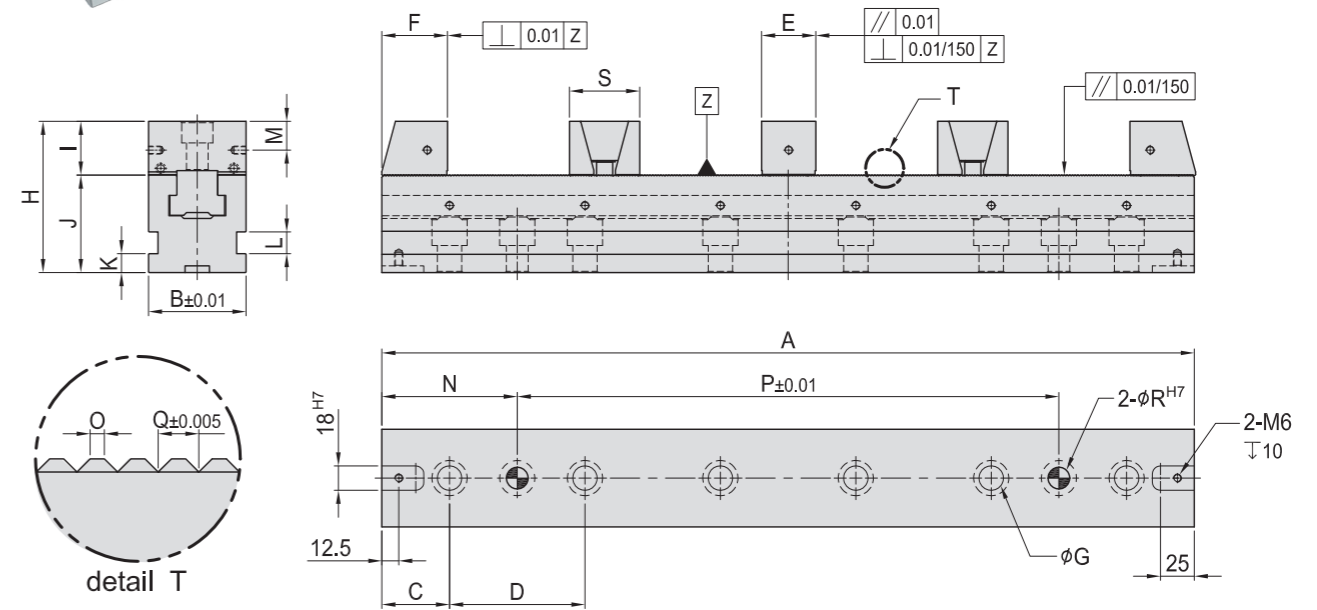
BE series offers more parts held & larger size parts held - compared to the "B" series

- Material 100% tool steel
- Heat treated HRC 55° & ground

**High Capacity
High Flexibility**



SVF-50 : 1000 kgf
Clamping force: SVF-72 : 2000 kgf
SVF-100: 3000 kgf



MODEL NO.	A	B	C	D	E	F	G	H	I	J	K	L	M	N	O	P	Q	R	S	kg
SVF-BE-5030-80	300	50	30	80	30	36	14	75	24.8	50	10	12	12.5	70	0.50	160	1.5	12	36	6.0
SVF-BE-5030-100			50	100										100		100				
SVF-BE-5040-80	400	50	40	80	30	36	14	75	24.8	50	10	12	12.5	80	0.50	240	1.5	12	36	7.5
SVF-BE-5040-100			50	100										100		200				
SVF-BE-5050-80	500	50	50	80	30	36	14	75	24.8	50	10	12	12.5	90	0.50	320	1.5	12	36	9.0
SVF-BE-5050-100				100										100		300				
SVF-BE-5060-80	600	50	60	80	30	36	14	75	24.8	50	10	12	12.5	100	0.50	400	1.5	12	36	10.2
SVF-BE-5060-100			50	100																
SVF-BE-5070-80	700	50	70	80	30	36	14	75	24.8	50	10	12	12.5	110	0.50	480	1.5	12	36	11.5
SVF-BE-5070-100			50	100										100		500				
SVF-BE-7240-100	400	72	50	100	40	48	18	112	39.7	72	14	16	21.3	100	0.70	200	2.0	16	52	18.0
SVF-BE-7250-100														300		300				21.0
SVF-BE-7260-100	600	72	50	100	40	48	18	112	39.7	72	14	16	21.3	100	0.70	400	2.0	16	52	24.0
SVF-BE-7270-100														500		500				26.0
SVF-BE-10040-100	400	100	50	100	44	48	18	115	43.1	72	14	16	22.2	100	0.85	200	2.5	16	65	27.0
SVF-BE-10050-100														300		300				31.0
SVF-BE-10060-100	600	100	50	100	44	48	18	115	43.1	72	14	16	22.2	100	0.85	400	2.5	16	65	35.0
SVF-BE-10070-100														500		500				39.0

(SVF vises listed above come equipped to clamp 1-4 parts, if additional part clamping is required please order optional accessories as listed on pages 7-14 ~ 7-19)

BP

BPA

BC

CP

SU

PT

SVF

ALV

OK-
VISE

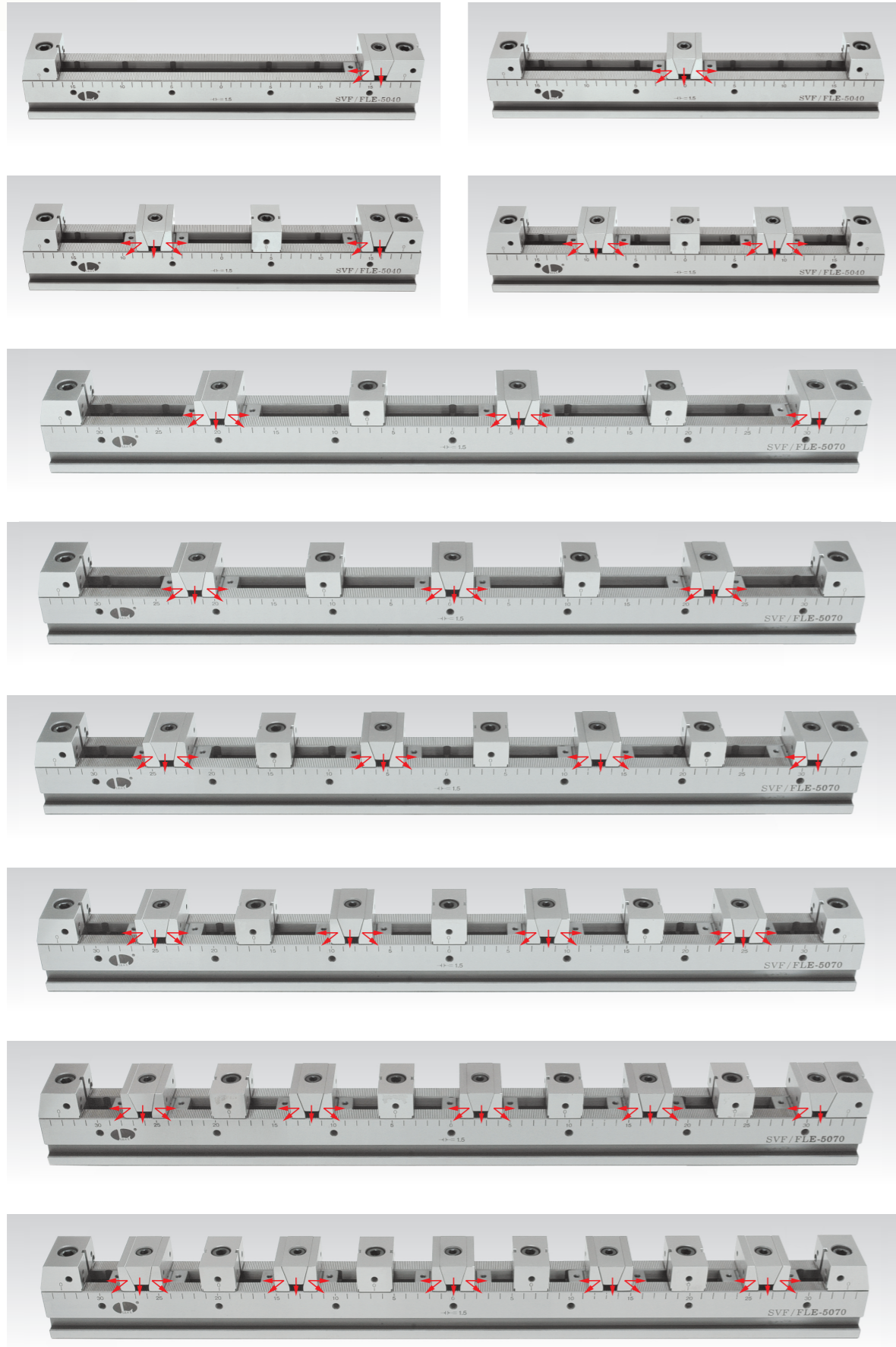
OTHER

Column
for
Technical
Data

SVF-BE

SVF-BE

Forcing direction



Maximum width of the workpieces which can be clamped

MODEL NO.	1 pcs	2 pcs	3 pcs	4 pcs	5 pcs
SVF-BE-5030	203	96	45	31	14
SVF-BE-5040	303	146	79	56	34
SVF-BE-5050	403	196	112	81	54
SVF-BE-5060	503	246	145	106	74
SVF-BE-5070	603	296	179	131	94
SVF-BE-7240	269	126	59	40	17
SVF-BE-7250	369	176	92	65	37
SVF-BE-7260	469	226	125	90	57
SVF-BE-7270	569	276	159	115	77
SVF-BE-10040	258	119	49	32	-
SVF-BE-10050	358	169	83	57	28
SVF-BE-10060	458	219	116	82	48
SVF-BE-10070	558	269	149	107	68

MODEL NO.	6 pcs	7 pcs	8 pcs	9 pcs
SVF-BE-5030	--	--	--	--
SVF-BE-5040	26	15	--	--
SVF-BE-5050	43	29	24	15
SVF-BE-5060	60	43	36	26
SVF-BE-5070	76	58	49	37
SVF-BE-7240	--	--	--	--
SVF-BE-7250	28	--	--	--
SVF-BE-7260	44	27	22	--
SVF-BE-7270	61	41	34	22
SVF-BE-10040	--	--	--	--
SVF-BE-10050	19	--	--	--
SVF-BE-10060	36	18	--	--
SVF-BE-10070	53	32	26	--

MODEL NO.	10 pcs	11 pcs	12 pcs	13 pcs
SVF-BE-5030	--	--	--	--
SVF-BE-5040	--	--	--	--
SVF-BE-5050	--	--	--	--
SVF-BE-5060	22	15	--	--
SVF-BE-5070	32	24	21	16
SVF-BE-7240	--	--	--	--
SVF-BE-7250	--	--	--	--
SVF-BE-7260	--	--	--	--
SVF-BE-7270	18	--	--	--
SVF-BE-10040	--	--	--	--
SVF-BE-10050	--	--	--	--
SVF-BE-10060	--	--	--	--
SVF-BE-10070	--	--	--	--

BP

BPA

BC

CP

SU

PT

SVF

ALV

OK-
VISE

OTHER

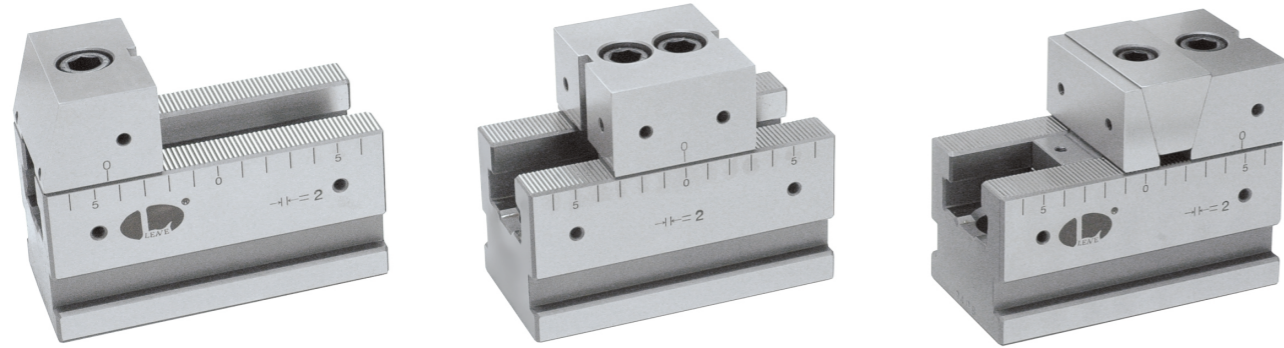
Column
for
Technical
Data



SVF-C FLEXIBLE LINE UP VISE SERIES

- Material 100% tool steel
- Heat treated HRC 55° & ground

**High Capacity
High Flexibility**

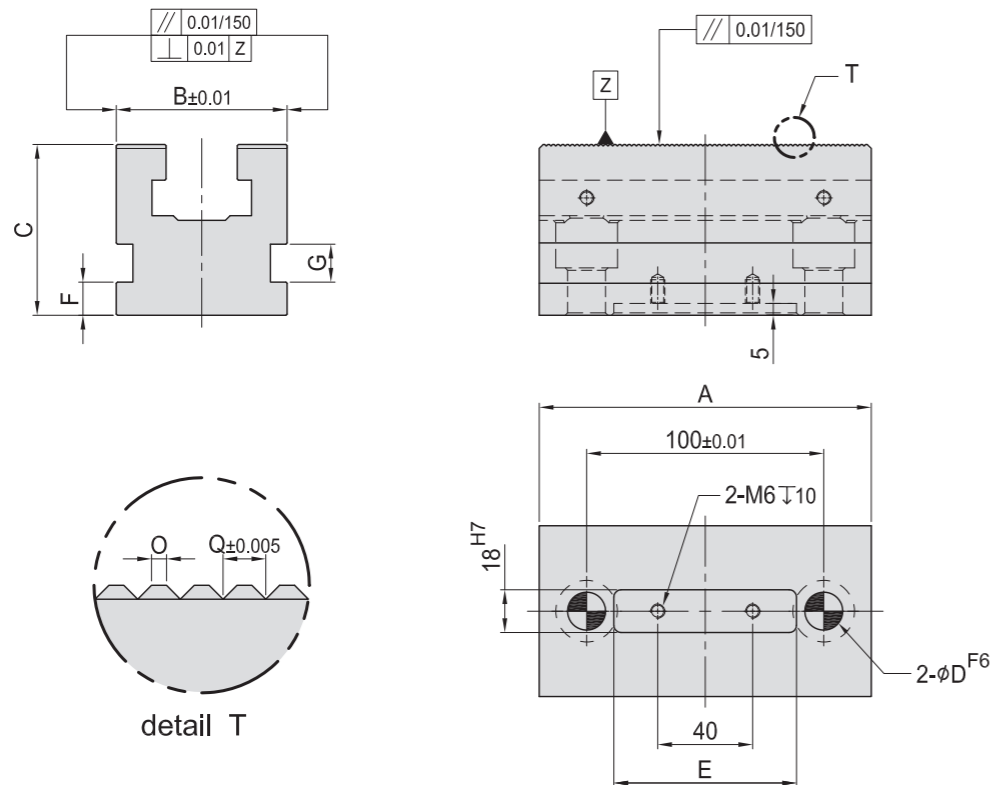


MODEL NO.	kg
SVF-C-5013-100-A	2.0
SVF-C-7214-100-A	5.0
SVF-C-10015-100-A	7.5

MODEL NO.	kg
SVF-C-5013-100-B	2.2
SVF-C-7214-100-B	5.7
SVF-C-10015-100-B	8.5

MODEL NO.	kg
SVF-C-5013-100-C	2.5
SVF-C-7214-100-C	6.2
SVF-C-10015-100-C	9.8

Main body

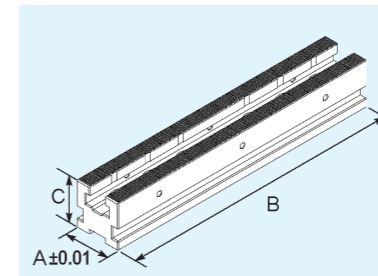
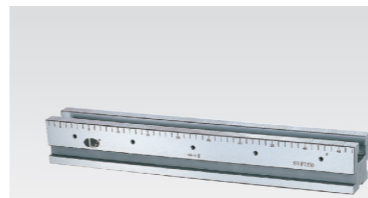


MODEL NO.	A	B	C	D	E	F	G	O	Q	kg
SVF-AB01-5013-100	130	50	50	12	77	10	12	0.50	1.5	1.6
SVF-AB01-7214-100	140	72	72	16	77	14	16	0.70	2.0	4.0
SVF-AB01-10015-100	148	100	72	16	77	14	16	0.85	2.5	5.8



SVF Optional accessory parts

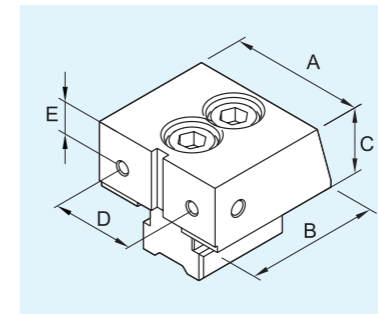
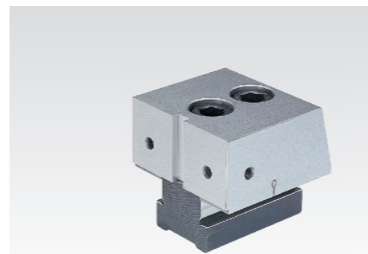
Main body



TYPE	A	B	C	kg
SVF-AB01-5030-80	50	300	50	4.0
SVF-AB01-5030-100	50	300	100	5.3
SVF-AB01-5040-80	50	400	50	5.3
SVF-AB01-5040-100	50	400	100	6.7
SVF-AB01-5050-80	50	500	50	8.0
SVF-AB01-5050-100	50	500	100	9.5
SVF-AB01-5060-80	50	600	50	9.5
SVF-AB01-5060-100	50	600	100	11.2
SVF-AB01-5070-80	72	400	72	14.0
SVF-AB01-5070-100	72	400	100	17.0
SVF-AB01-7240-100	72	500	72	20.0
SVF-AB01-7250-100	72	600	72	20.0
SVF-AB01-7260-100	72	700	72	20.0
SVF-AB01-7270-100	100	400	72	16.0
SVF-AB01-10040-100	100	500	72	20.0
SVF-AB01-10050-100	100	600	72	24.0
SVF-AB01-10060-100	100	700	72	28.0

(For use on A & B series)

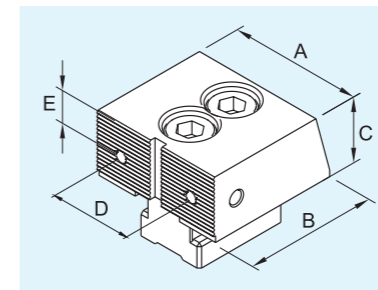
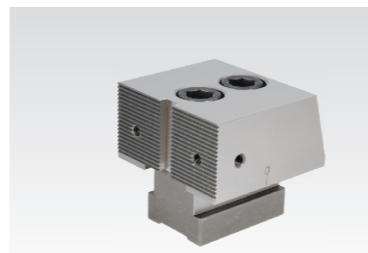
Stationary wedge-heavy duty



TYPE	A	B	C	D	E	kg
SVF-AB02-50	50	50	25	30	12.5	0.6
SVF-AB02-72	72	74	40	44	21.5	2.0
SVF-AB02-100	100	75	43	64	22.0	2.6

(For use on B series)

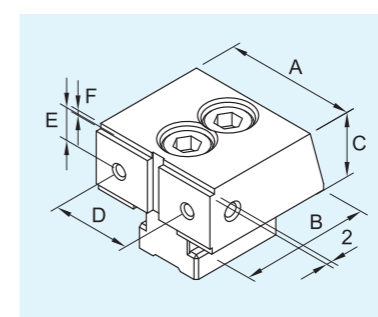
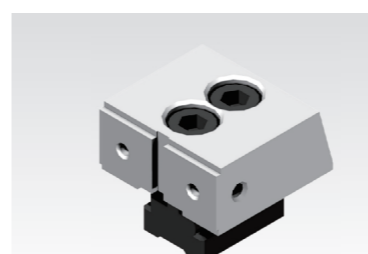
Serrated stationary wedge-heavy duty



TYPE	A	B	C	D	E	kg
SVF-ABG02-50	50	50	25	30	12.5	0.6
SVF-ABG02-72	72	74	40	44	21.5	2.0
SVF-ABG02-100	100	75	43	64	22.0	2.6

(For use on B series)

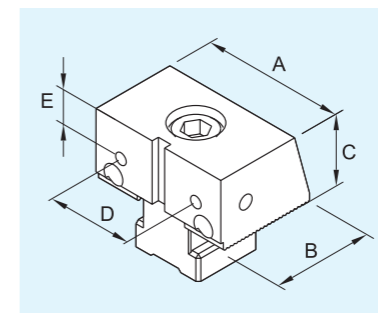
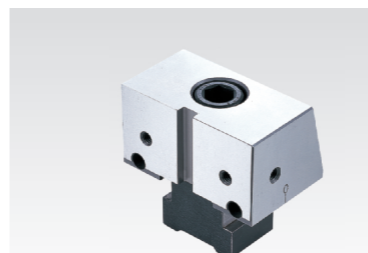
Step stationary wedge-heavy duty



TYPE	A	B	C	D	E	F	kg
SVF-ABS02-502	50	50	25	30	12.5	2	0.6
5							
SVF-ABS02-505	72	74	40	44	21.5	2	2.0
5							
SVF-ABS02-1002	100	75	43	64	22.0	2	2.6
5							

(For use on B series)

Stationary wedge - standard duty



TYPE	A	B	C	D	E	kg
SVF-AB03-50	50	35	25	30	12.5	0.4
SVF-AB03-72	72	48	40	44	21.5	1.1
SVF-AB03-100	100	48	43	64	22.0	1.7

(For use on A, BE & C series)

BP

BPA

BC

CP

SU

PT

SVF

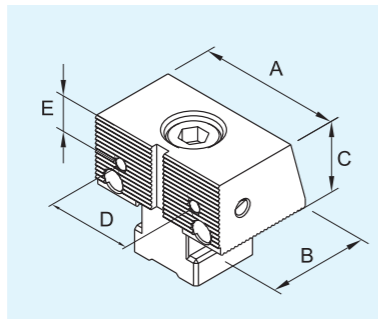
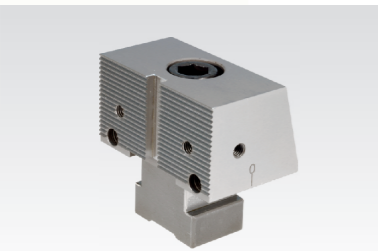
ALV

OK-
VISE

OTHER

Column
for
Technical
Data

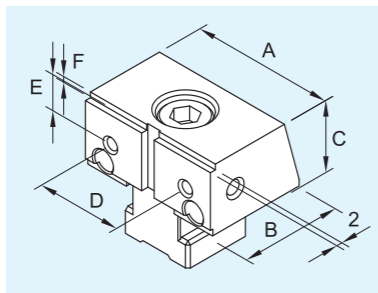
Serrated stationary wedge - standard duty



TYPE	A	B	C	D	E	kg
SVF-ABG03-50	50	35	25	30	12.5	0.4
SVF-ABG03-72	72	48	40	44	21.5	1.1
SVF-ABG03-100	100	48	43	64	22.0	1.7

(For use on A ,BE & C series)

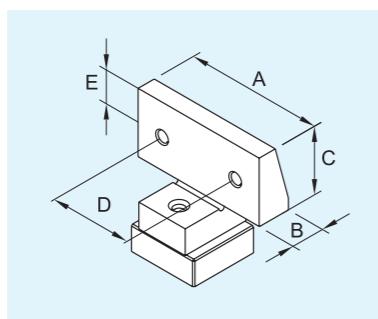
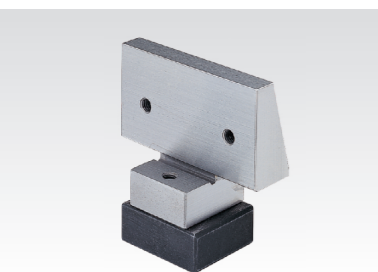
Step stationary wedge - standard duty



TYPE	A	B	C	D	E	F	kg
SVF-ABS03-502	50	35	25	30	12.5	2	0.4
SVF-ABS03-505						5	
SVF-ABS03-722	72	48	40	44	21.5	2	1.1
SVF-ABS03-725						5	
SVF-ABS03-1002	100	48	43	64	22.0	2	1.7
SVF-ABS03-1005						5	

(For use on A ,BE & C series)

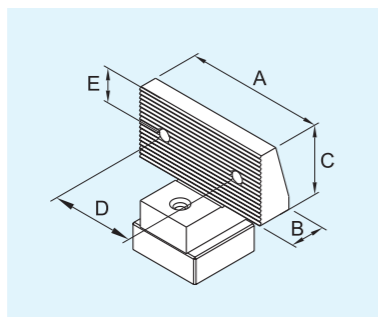
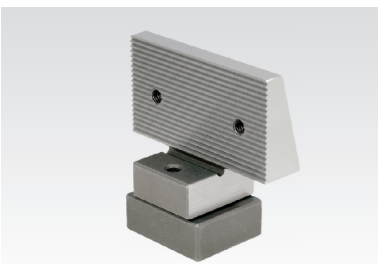
Moveable jaw



TYPE	A	B	C	D	E	kg
SVF-AB04-50	50	12	24.3	30	12.5	0.2
SVF-AB04-72	72	18	39.3	44	21.5	0.6
SVF-AB04-100	100	21	42.0	64	22.0	1.0

(For use on all series)

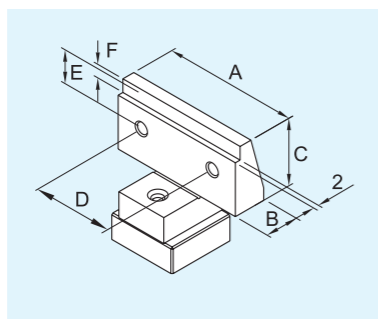
Serrated moveable jaw



TYPE	A	B	C	D	E	kg
SVF-ABG04-50	50	12	24.3	30	12.5	0.2
SVF-ABG04-72	72	18	39.3	44	21.5	0.6
SVF-ABG04-100	100	21	42.0	64	22.0	1.0

(For use on all series)

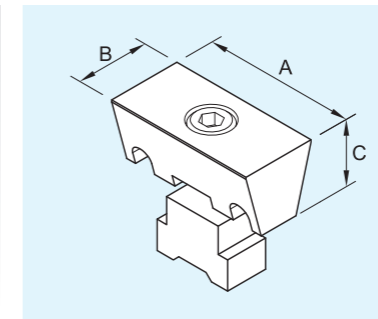
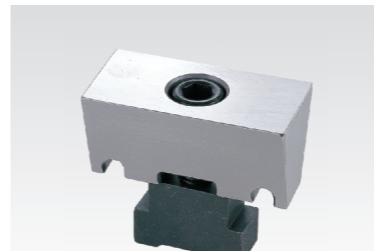
Step moveable jaw



TYPE	A	B	C	D	E	F	kg
SVF-ABS04-502	50	12	24.3	30	12.5	2	0.2
SVF-ABS04-505						5	
SVF-ABS04-722	72	18	39.3	44	21.5	2	0.6
SVF-ABS04-725						5	
SVF-ABS04-1002	100	21	42.0	64	22.0	2	1.0
SVF-ABS04-1005						5	

(For use on all series)

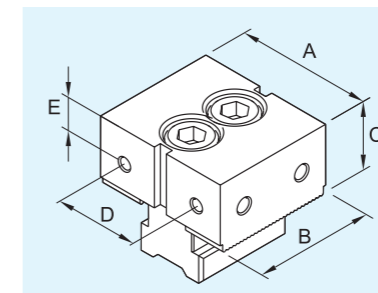
Moveable wedge



TYPE	A	B	C	kg
SVF-A01-50	50	24	22	0.2
SVF-A01-72	72	35	35	0.6
SVF-A01-100	100	45	38	1.2

(For use on A series)

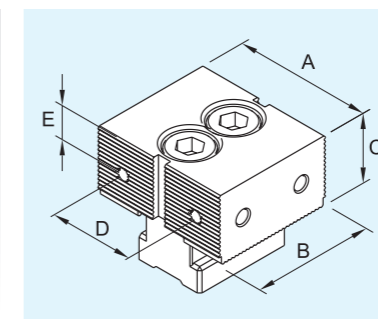
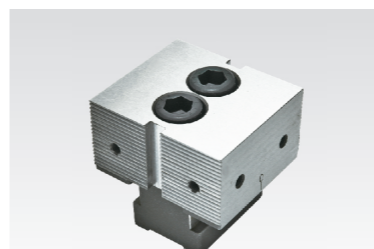
Fixed jaw-heavy duty



TYPE	A	B	C	D	E	kg
SVF-B01-50	50	44	25	30	12.5	0.5
SVF-B01-72	72	65	40	44	21.5	1.8
SVF-B01-100	100	70	43	64	22.0	2.6

(For use on B & C series)

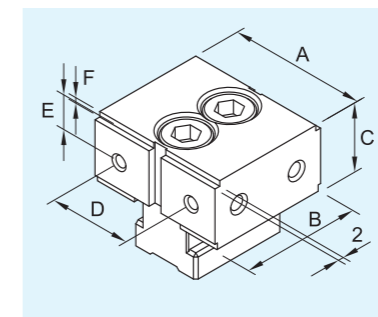
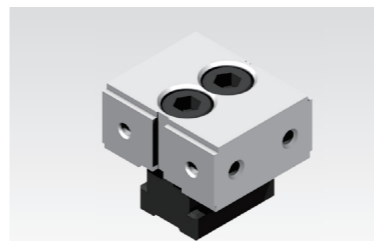
Serrated fixed jaw-heavy duty



TYPE	A	B	C	D	E	kg
SVF-BG01-50	50	44	25	30	12.5	0.5
SVF-BG01-72	72	65	40	44	21.5	1.8
SVF-BG01-100	100	70	43	64	22.0	2.6

(For use on B & C series)

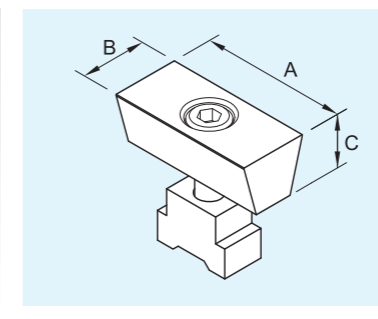
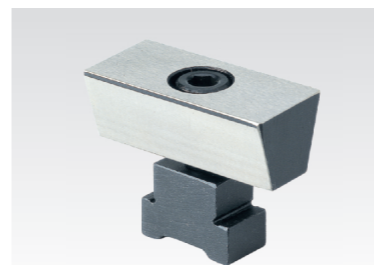
Step fixed jaw-heavy duty



TYPE	A	B	C	D	E	F	kg
SVF-BS01-502	50	44	25	30	12.5	2	0.5
SVF-BS01-505						5	
SVF-BS01-722	72	65	40	44	21.5	2	1.8
SVF-BS01-725						5	
SVF-BS01-1002	100	70	43	64	22.0	2	2.6
SVF-BS01-1005						5	

(For use on B & C series)

Moveable wedge



TYPE	A	B	C	kg
SVF-B02-50	50	22.5	18.0	0.2
SVF-B02-72	72	35.0	29.0	0.6
SVF-B02-100	100	45.0	32.9	1.3

(For use on B & BE series)

BP

BPA

BC

CP

SU

PT

SVF

ALV

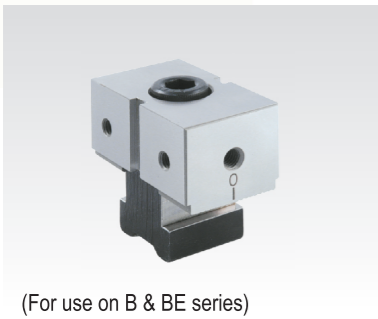
OK-
VISE

OTHER

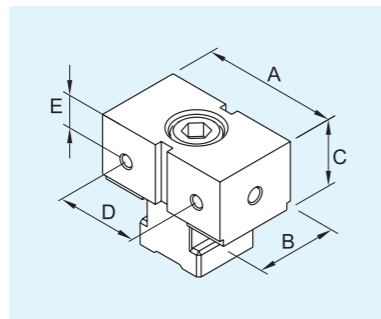
Column
for
Technical
Data

SVF Optional accessory parts

Fixed jaw-standard duty

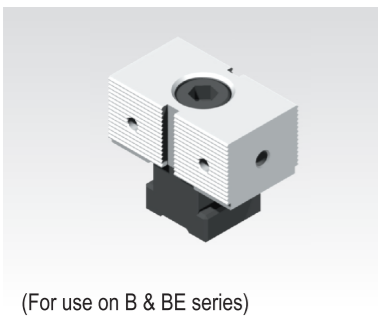


(For use on B & BE series)

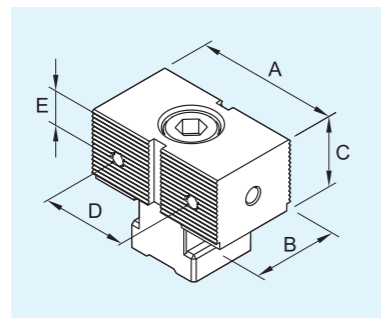


TYPE	A	B	C	D	E	kg
SVF-B03-50	50	30	25	30	12.5	0.4
SVF-B03-72	72	40	40	44	21.5	1.1
SVF-B03-100	100	44	43	64	22.0	1.7

Serrated fixed jaw-standard duty

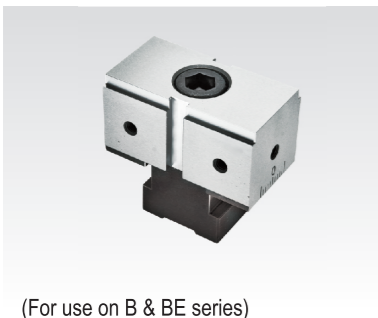


(For use on B & BE series)

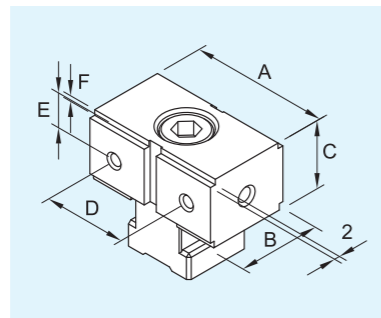


TYPE	A	B	C	D	E	kg
SVF-BG03-50	50	30	25	30	12.5	0.4
SVF-BG03-72	72	40	40	44	21.5	1.1
SVF-BG03-100	100	44	43	64	22.0	1.7

Step fixed jaw-standard duty

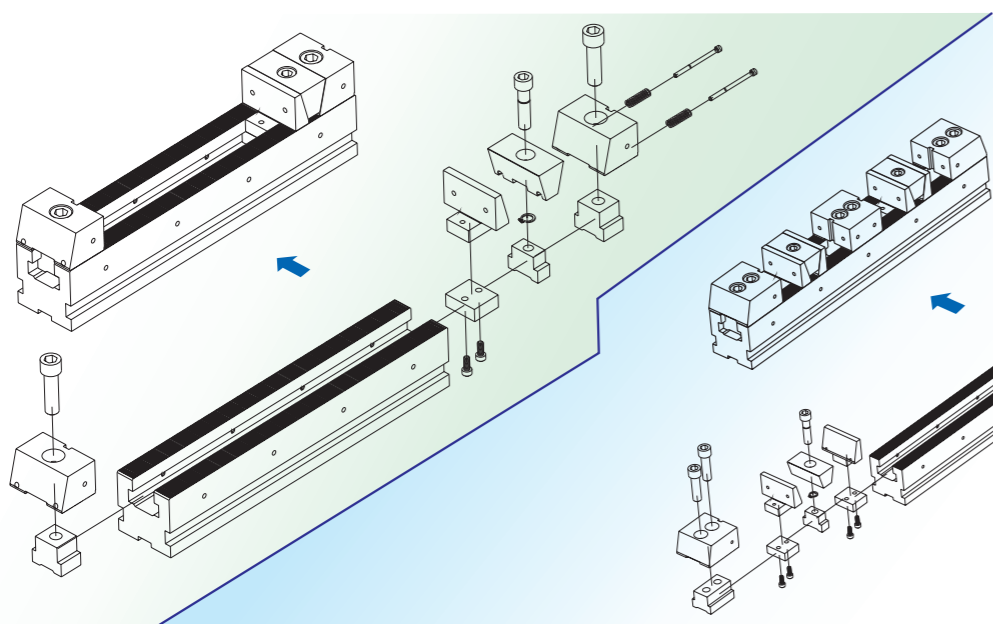


(For use on B & BE series)

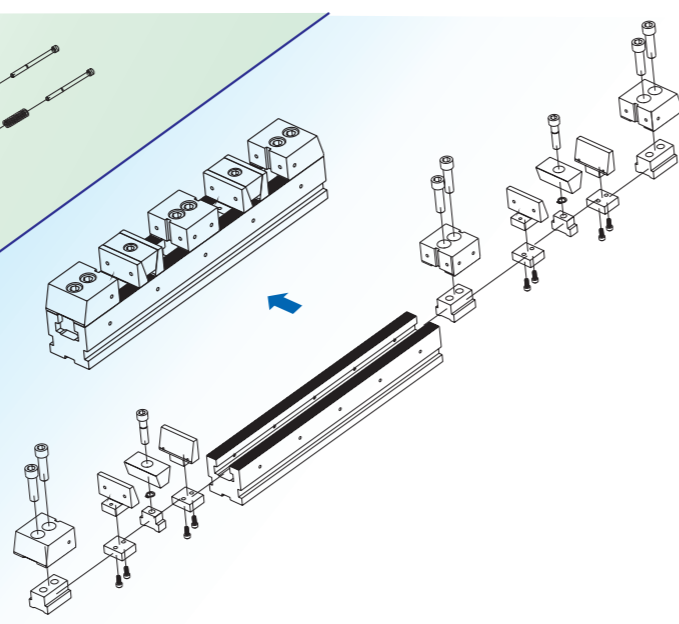


TYPE	A	B	C	D	E	F	kg
SVF-BS03-502	50	30	25	30	12.5	2	0.4
SVF-BS03-505						5	
SVF-BS03-722	72	40	40	44	21.5	2	1.1
SVF-BS03-725						5	
SVF-BS03-1002	100	44	43	64	22.0	2	1.7
SVF-BS03-1005						5	

SVF-A Assembled

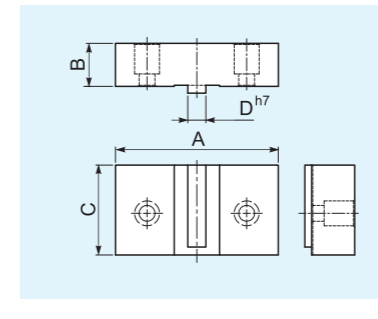
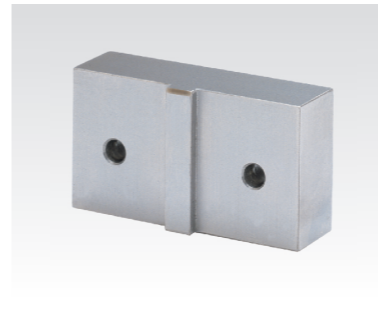


SVF-B Assembled



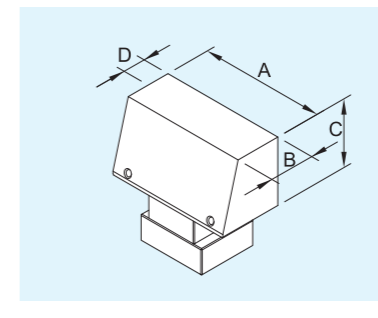
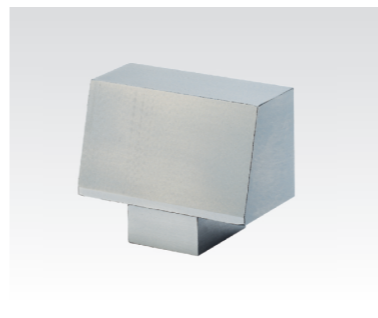
SVF Optional accessory parts

Fixed soft jaw



TYPE	A	B	C	D	kg
SVF-S01-50	50	17	25	5	0.2
SVF-S01-50W	80	27			0.4
SVF-S01-72	72	19	40	8	0.4
SVF-S01-72W	115	30			1.1
SVF-S01-100	100	25	43	10	0.9
SVF-S01-100W	150	35			1.8

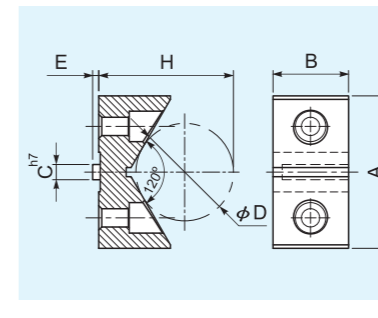
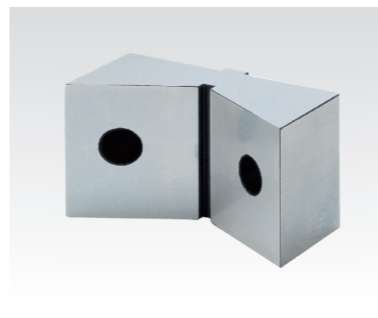
Moveable soft jaw



TYPE	A	B	C	D	kg
SVF-S02-50	50	21	24.5	13	0.3
SVF-S02-50W	80	34			0.7
SVF-S02-72	72	26	39.5	19	1.0
SVF-S02-72W	115	40			1.9
SVF-S02-100	100	35	42.5	25	2.0
SVF-S02-100W	150	50			3.2

D is the maximum dimension to be re-machined to accommodate the clamping requirement.

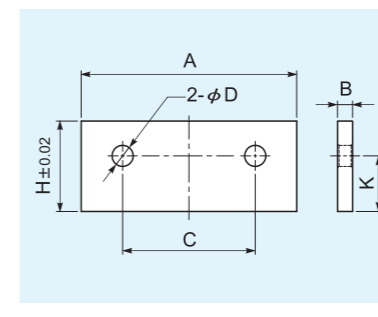
Hardened V jaw



TYPE	A	B	C	D
SVF-S03-50	50	25	5	42
SVF-S03-72	72	40	8	62
SVF-S03-100	100	43	10	62

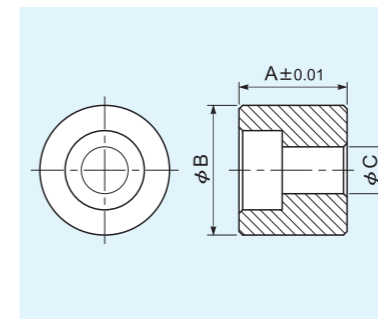
TYPE	E	H	CLAMP (MAX)	kg
SVF-S03-50	2	54.98	phi 70	0.2
SVF-S03-72	3	82.45	phi 110	0.6
SVF-S03-100	4	90.24	phi 160	1.2

Parallel



TYPE	A	B	C	D	H	K	kg
SVF-S04-50-17		5			17		0.03
SVF-S04-50-20	49.5	5	30	6	20	12.3	0.04
SVF-S04-50-22							
SVF-S04-72-25		5			25		0.07
SVF-S04-72-30	71.5	5	44	7	30	18.4	0.08
SVF-S04-72-35					35		
SVF-S04-72-37					37		
SVF-S04-100-29		8			29		0.18
SVF-S04-100-33	99.5	8	64	9	33	21.0	0.21
SVF-S04-100-38					38		
SVF-S04-100-40					40		

Spacer - work piece stop plate



TYPE	A	B	C	kg
SVF-S05-10	10			0.01
SVF-S05-15	15	18	6.5	0.02
SVF-S05-23	23			0.03
SVF-S05-100-15	15			0.03
SVF-S05-100-20	20	25	9.0	0.04
SVF-S05-100-25	25			0.05

BP

BPA

BC

CP

SU

PT

SVF

ALV

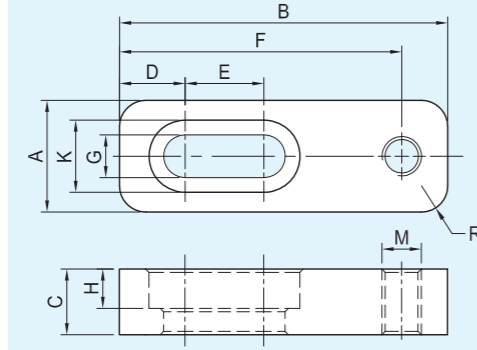
OK-
VISE

OTHER

Column
for
Technical
Data

SVF Optional accessory parts

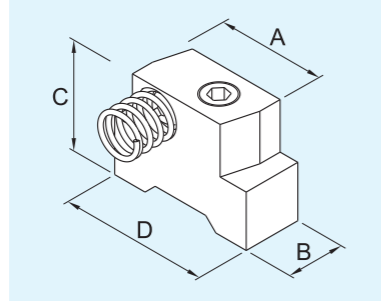
Work piece stop plate



TYPE	A	B	C	D	E	F
SVF-S06-50	17	45	10	10.0	12	38
SVF-S06-72	17	50	10	10.0	12	43
SVF-S06-100	25	55	15	11.5	16	45

TYPE	G	H	K	M	R	kg
SVF-S06-50	6.5	6.0	11	M6	4	0.03
SVF-S06-72	6.5	6.0	11	M6	4	0.04
SVF-S06-100	9.0	8.5	14	M8	5	0.14

Spring loaded nut



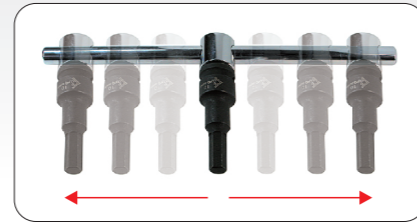
TYPE	A	B	C	D	kg
SVF-S07-50	19	10.2	19	25	0.04
SVF-S07-72	30	12.2	29	40	0.05
SVF-S07-100	45	14.0	29	56	0.05

(For use on B & BE series)

T-handle adjustable socket driver (SKD-T 1/2 L10)



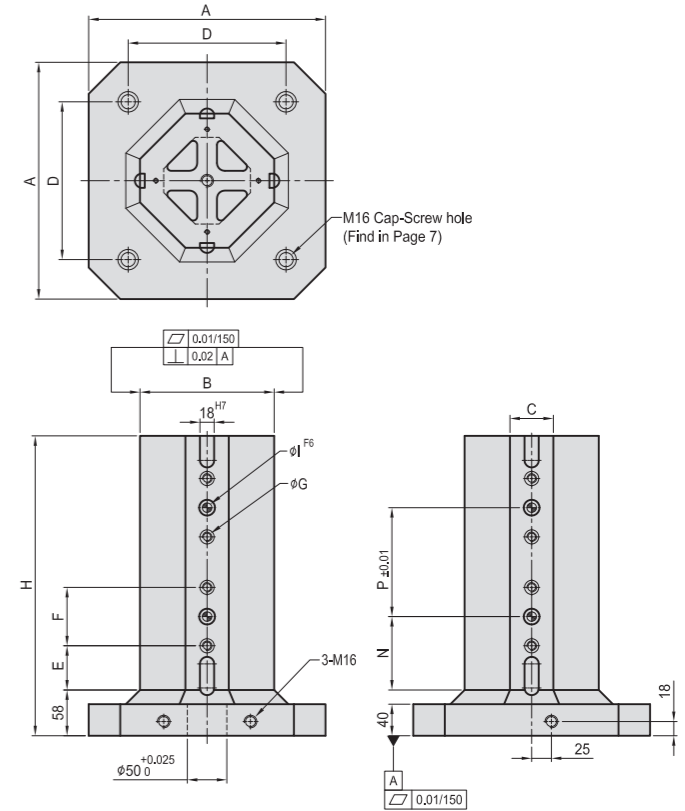
Socket



Standard parts included with SVF-A & SVF-B SVF-BE vises

For	T-slot nut		Clamp		Screw		Threaded dowel pin		Locating key		Hexagonal driver	
	MODEL NO.	QTY	MODEL NO.	QTY	MODEL NO.	QTY	MODEL NO.	QTY	MODEL NO.	QTY	MODEL NO.	QTY
50	PT06-1812		SVF-P01-50		CAP-M12-40L		PT11-1234		PT27-1810		SPN-M6HEX SPN-M8HEX	1 pc 1 pc
72	PT06-1816	4 pcs	SVF-P01-72	4 pcs	CAP-M16-50L		PT11-1642	2 pcs	CAP-M6-10L	2 pcs	SPN-M10HEX SPN-M12HEX	1 pc 1 pc
100	PT06-1816		SVF-P01-72		CAP-M16-50L		PT11-1642				SPN-M12HEX SPN-M14HEX	1 pc 1 pc

SVF-CB M/C Octagonal cube



MODEL NO.	A	B	C	D	E	F	G	H	I	N	P	Mounting holes	kg
SVF-5030-300CB8-80	300	170	55	200	32	80	M12	360	12	72	160	4	61
SVF-5030-300CB8-100					52	100							
SVF-5030-320CB8-80	320	170	55	200	32	80	M12	360	12	72	160	4	65
SVF-5030-320CB8-100					52	100							
SVF-5040-300CB8-80	300	170	55	200	42	80	M12	460	12	82	240	4	73
SVF-5040-300CB8-100					52	100							
SVF-5040-320CB8-80	320	170	55	200	42	80	M12	460	12	82	240	4	76
SVF-5040-320CB8-100					52	100							
SVF-5050-400CB8-80	400	200	55	320	52	80	M12	560	12	92	320	4	118
SVF-5050-400CB8-100					100	102							
SVF-5050-500CB8-80	500	250	55	400	52	80	M12	560	12	92	320	8	163
SVF-5050-500CB8-100					100	102							
SVF-5060-400CB8-80	400	200	55	320	62	80	M12	660	12	102	400	4	132
SVF-5060-400CB8-100					52	100							
SVF-5060-500CB8-80	500	250	55	400	62	80	M12	660	12	102	400	8	181
SVF-5060-500CB8-100					52	100							
SVF-5070-400CB8-100	400	200	55	320	52	100	M12	760	12	102	500	4	188
SVF-5070-500CB8-80	500	250	55	400	72	80	M12	760	12	112	480	8	199
SVF-5070-500CB8-100					52	100							
SVF-7240-300CB8-100	300	170	75	200	52	100	M16	460	16	102	200	4	76
SVF-7240-320CB8-100	320												79
SVF-7250-400CB8-100	400	200	75	320	52	100	M16	560	16	102	300	4	117
SVF-7250-500CB8-100	500	250	75	400	52	100	M16	560	16	102	300	8	167
SVF-7260-400CB8-100	400	200	75	320	52	100	M16	660	16	102	400	4	130
SVF-7260-500CB8-100	500	250	75	400	52	100	M16	660	16	102	400	8	185
SVF-7270-400CB8-100	400	200	75	320	52	100	M16	760	16	102	500	4	186
SVF-7270-500CB8-100	500	250	75	400	52	100	M16	760	16	102	500	8	204
SVF-7270-630CB8-100	630	300	75	500	52	100	M16	760	16	102	500	8	292
SVF-10050-400CB8-100	400	200	105	320	52	100	M16	560	16	102	300	4	130
SVF-10050-500CB8-100	500	250	105	400	52	100	M16	560	16	102	300	8	172
SVF-10060-500CB8-100	500	250	105	400	52	100	M16	660	16	102	400	8	191
SVF-10060-630CB8-100	630	300	105	500	52	100	M16	660	16	102	400	8	256
SVF-10070-500CB8-100	500	250	105	400	52	100	M16	760	16	102	500	8	211
SVF-10070-630CB8-100	630	300	105	500	52	100	M16	760	16	102	500	8	279

(Order optional mounting cube as a separate item)

BP

BPA

BC

CP

SU

PT

SVF

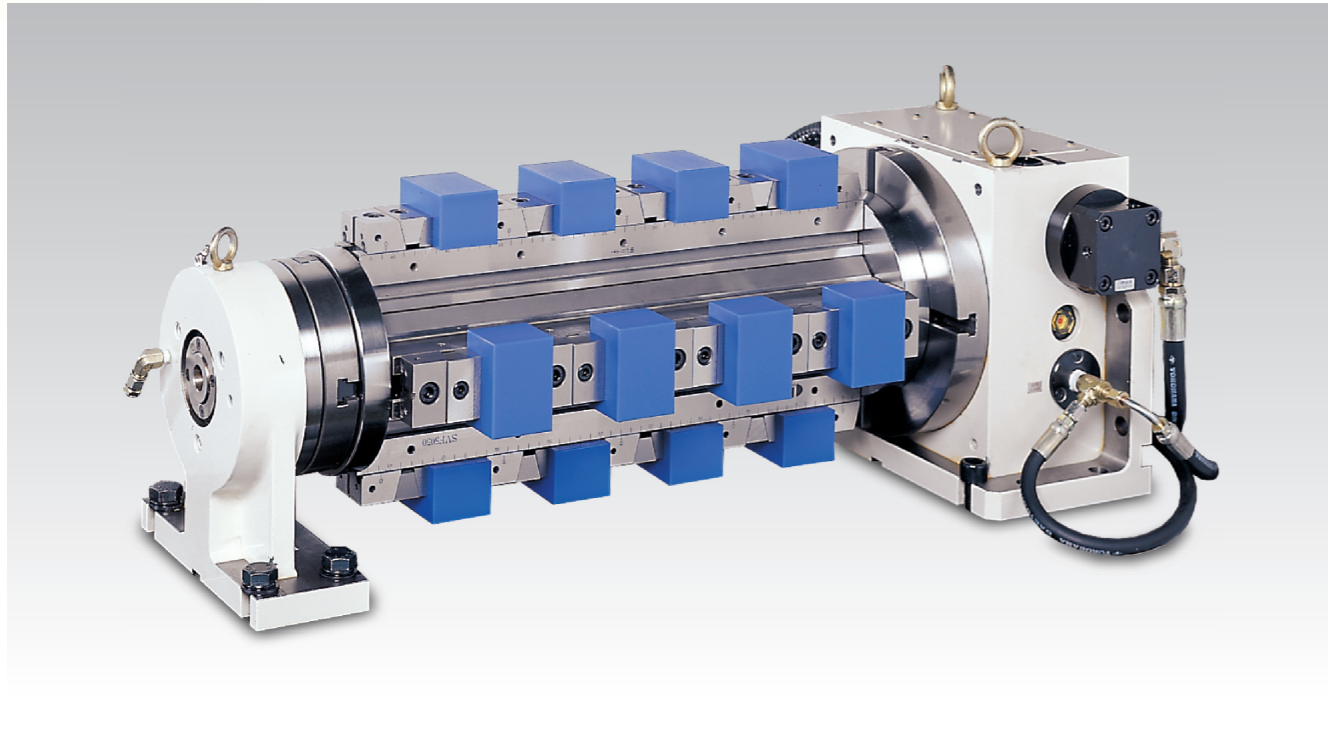
ALV

OK-
VISE

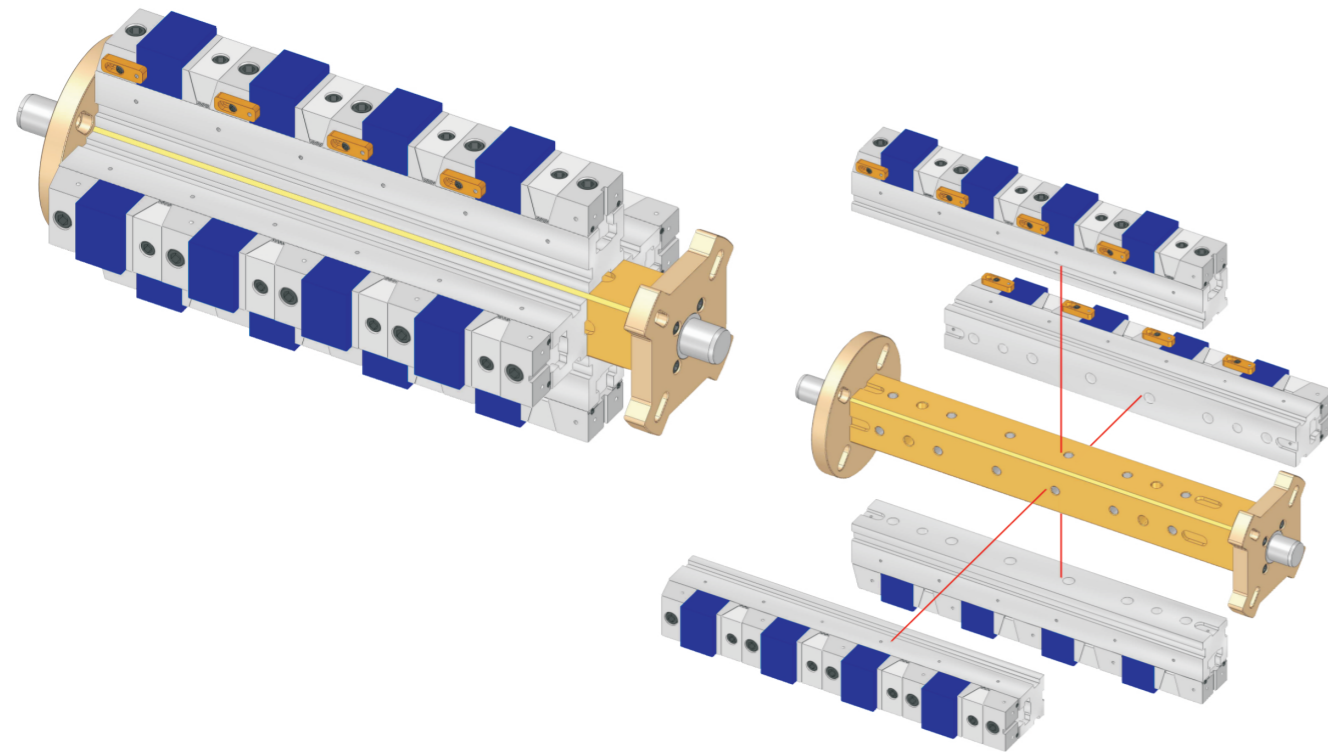
OTHER

Column
for
Technical
Data

APPLICATION EXAMPLE

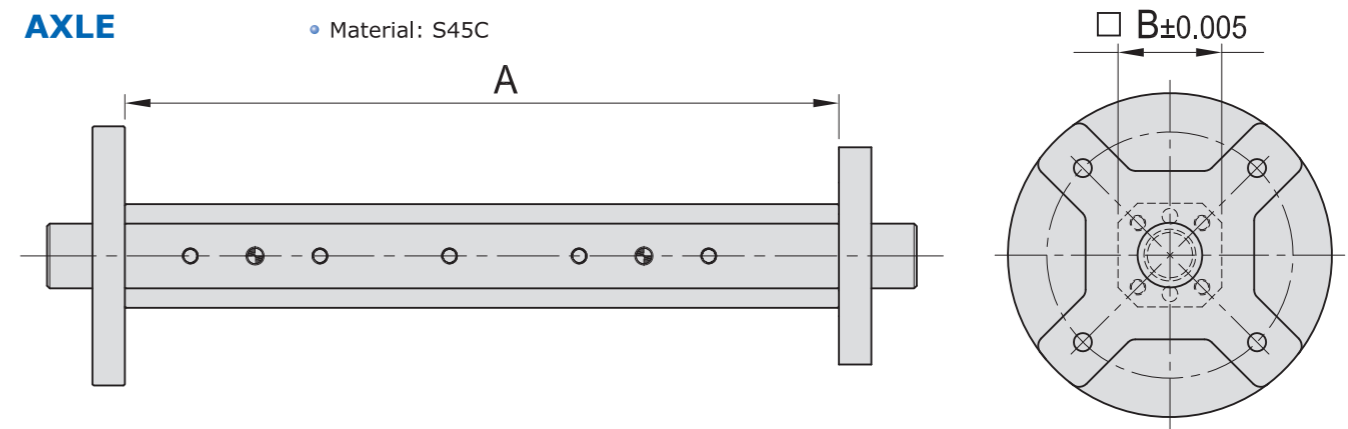


ASSEMBLED



AXLE

• Material: S45C

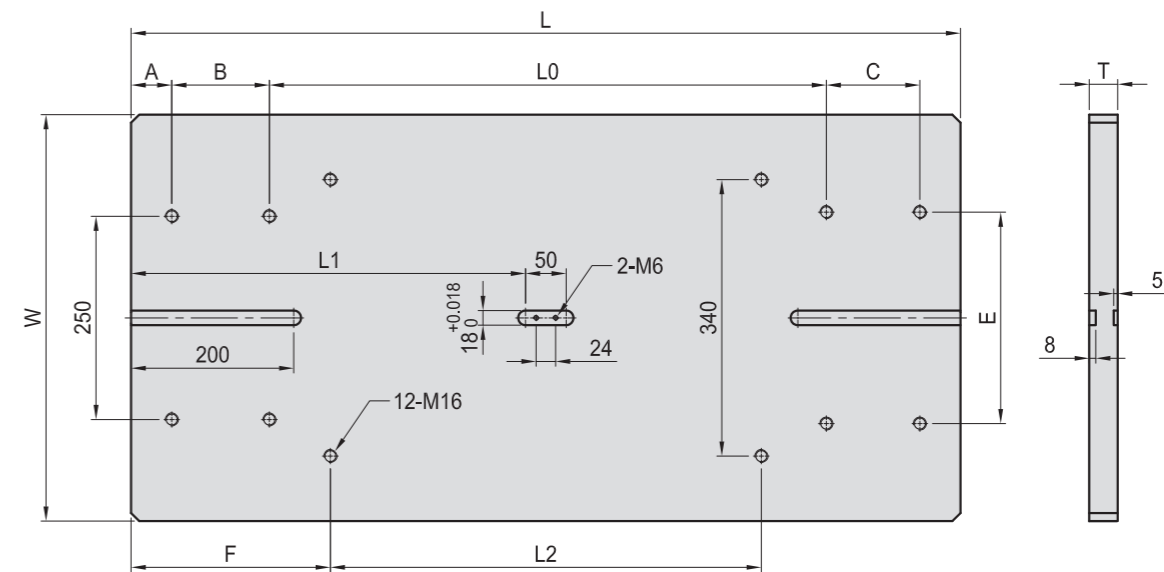


Model	A	B	kg	Model	A	B	kg
SVFX-5030-080	350	80	48.2	SVFX-7240-100	450	80	53.7
SVFX-5030-100				SVFX-7250-100	550	80	58.2
SVFX-5040-080	450	80	52.2	SVFX-7260-100	650	80	62.2
SVFX-5040-100				SVFX-7270-100	750	80	66.2
SVFX-5050-080	550	80	56.2	SVFX-10040-100	450	102	70.0
SVFX-5050-100				SVFX-10050-100	550	102	75.5
SVFX-5060-080	650	80	60.2	SVFX-10060-100	650	102	83.5
SVFX-5060-100				SVFX-10070-100	750	102	92.5
SVFX-5070-080	750	80	64.2				
SVFX-5070-100							

*Please offer the brand and model no. of the indexing table and the tail stock that you use when you place an order.

BASE PLATE

• Material: S45C



Model	L	L0	L1	L2	W	T	A	B	C	E	F
SVFX-5030BP	700	425	325	260							
SVFX-5040BP	800	525	375	360							
SVFX-5050BP	900	625	425	460	400	30	80	80	72	200	220
SVFX-5060BP	1000	725	475	560							
SVFX-5070BP	1100	825	525	660							
SVFX-7240BP	920	520	435	430							
SVFX-7250BP	1020	620	485	530	500	35	45	185	135	300	280
SVFX-7260BP	1120	720	535	630							
SVFX-7270BP	1220	820	585	730							

*Special design welcome!

(Optional accessory available for being ordered separately)

BP

BPA

BC

CP

SU

PT

SVF

ALV

OK-
VISE

OTHER

Column
for
Technical
Data



A series of horizontal blue lines for writing, spanning the width of the page.