

BP01

M/C BASE PLATE

- Material: Cast Iron FC300(JIS) / GG30(DIN)
- Heat treated (Normalized)
- Application: Vertical Machining Center.
- Features: Ready to accept a hole pattern for your special jig.



BP02

M/C BASE PLATE

- Material: Cast Iron FC300(JIS) / GG30(DIN)
- Heat treated (Normalized)
- Alignment Bushing: SUJ2(JIS) / 100Cr6(DIN) heat treated.
- Threaded Insert: S45C (JIS)/ CK45 (DIN), heat treated.
- MTP hole spacing: 50 ± 0.02
- Application: Vertical Machining Center.
- Features: Alignment bushing & thread insert at every hole location, easily adapts to standardized jig components.

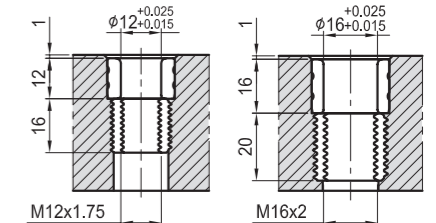
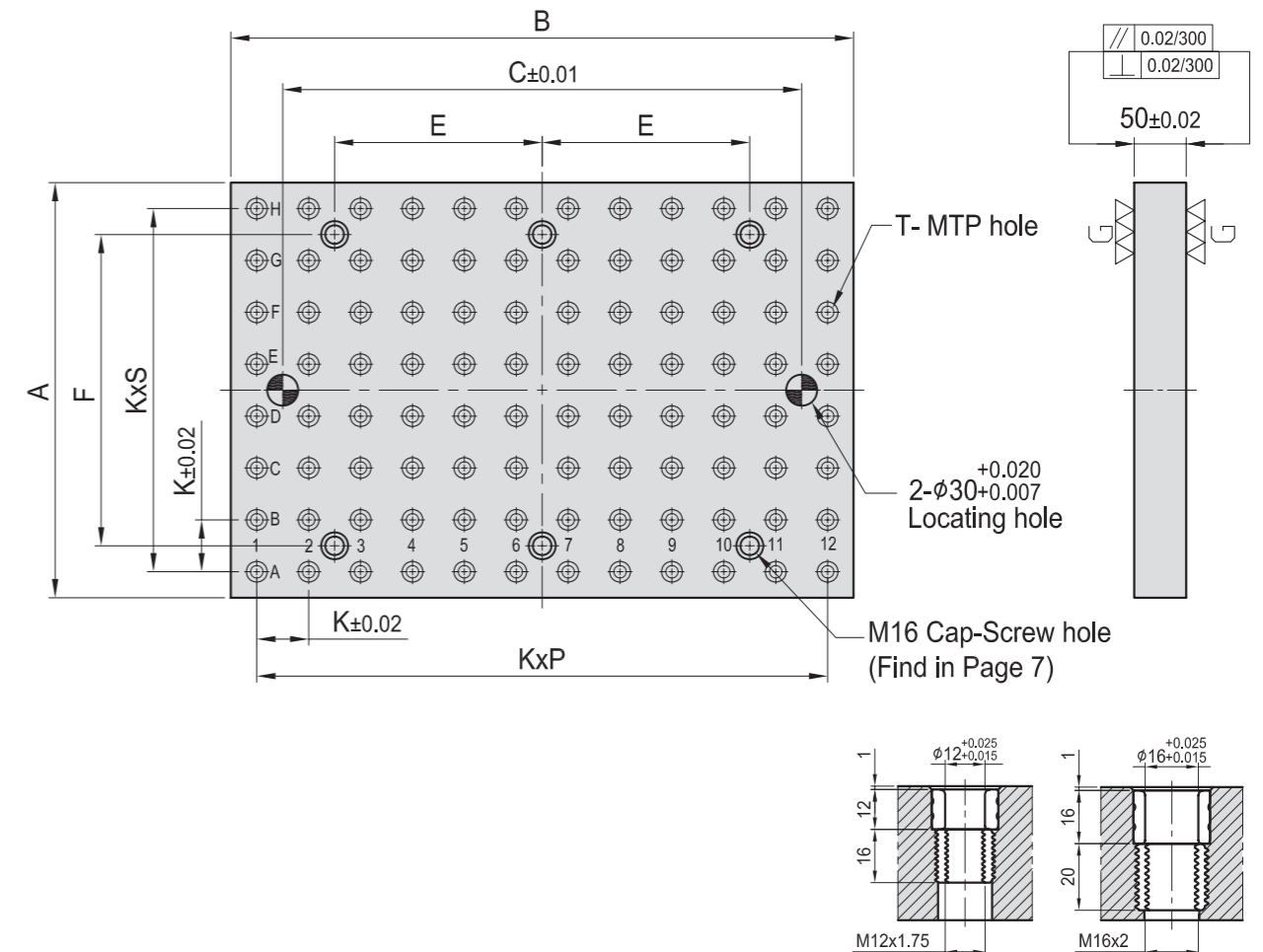
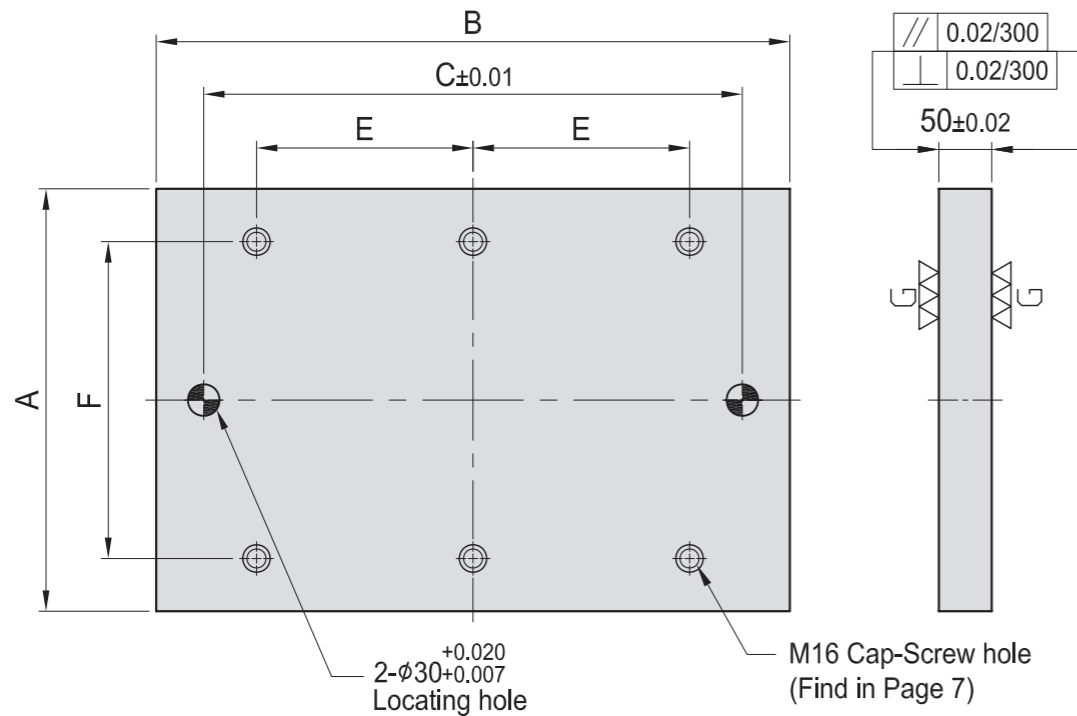


Figure T

MODEL NO.	A	B	C	E	F	kg
BP01-50400-0600	400					88
BP01-50500-0600	500	600	-	-	-	106
BP01-50600-0600	600					127
BP01-50400-0800	400	800	-	-	-	113
BP01-50450-0900	450	900	-	-	-	142
BP01-50500-1000	500	1000	-	-	-	176
BP01-50600-1200	600	1200	-	-	-	256

*Special Design Welcome !

MODEL NO.	A	B	C	E	F	T	K	P	S	MTP	kg
BP02-50400-0600-12	400					$\phi 12$	M12	50	11	7 96 90	90
BP02-50500-0600-12	500	600	-	-	-	$\phi 12$	M12	50	11	9 120 112	112
BP02-50600-0600-12	600					$\phi 12$	M12	50	11	11 144 134	134
BP02-50400-0800-12	400	800	-	-	-	$\phi 12$	M12	50	15	7 128 109	109
BP02-50450-0900-12	450	900	-	-	-	$\phi 12$	M12	50	17	8 158 138	138
BP02-50500-1000-12	500	1000	-	-	-	$\phi 12$	M12	50	19	9 200 165	165
BP02-50600-1200-12	600	1200	-	-	-	$\phi 12$	M12	50	23	11 288 244	244
MODEL NO.	A	B	C	E	F	T	K	P	S	MTP	kg
BP02-50400-0600-16	400					$\phi 16$	M16	50	11	7 96 89	89
BP02-50500-0600-16	500	600	-	-	-	$\phi 16$	M16	50	11	9 120 108	108
BP02-50600-0600-16	600					$\phi 16$	M16	50	11	11 144 120	120
BP02-50400-0800-16	400	800	-	-	-	$\phi 16$	M16	50	15	7 128 108	108
BP02-50450-0900-16	450	900	-	-	-	$\phi 16$	M16	50	17	8 158 134	134
BP02-50500-1000-16	500	1000	-	-	-	$\phi 16$	M16	50	19	9 200 164	164
BP02-50600-1200-16	600	1200	-	-	-	$\phi 16$	M16	50	23	11 288 240	240

*Special Design Welcome !

BP03

M/C BASE PLATE

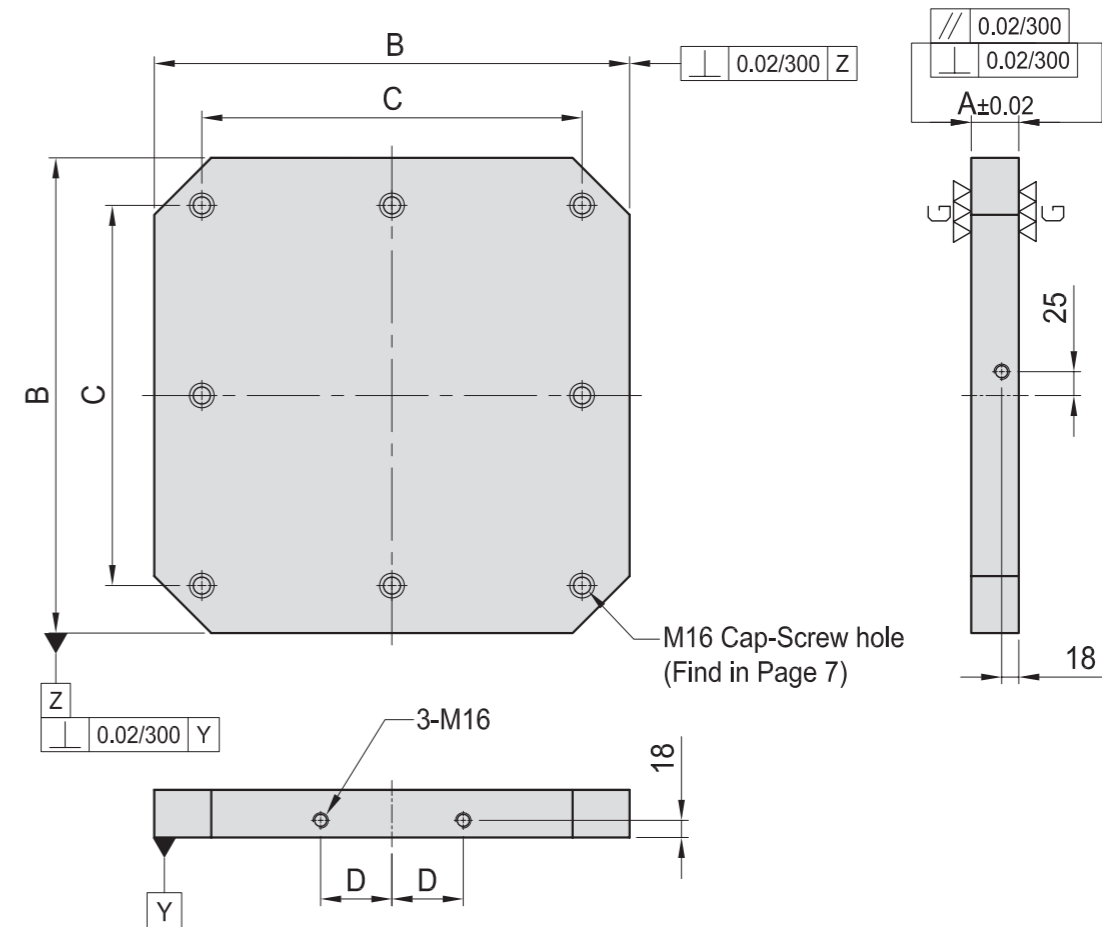
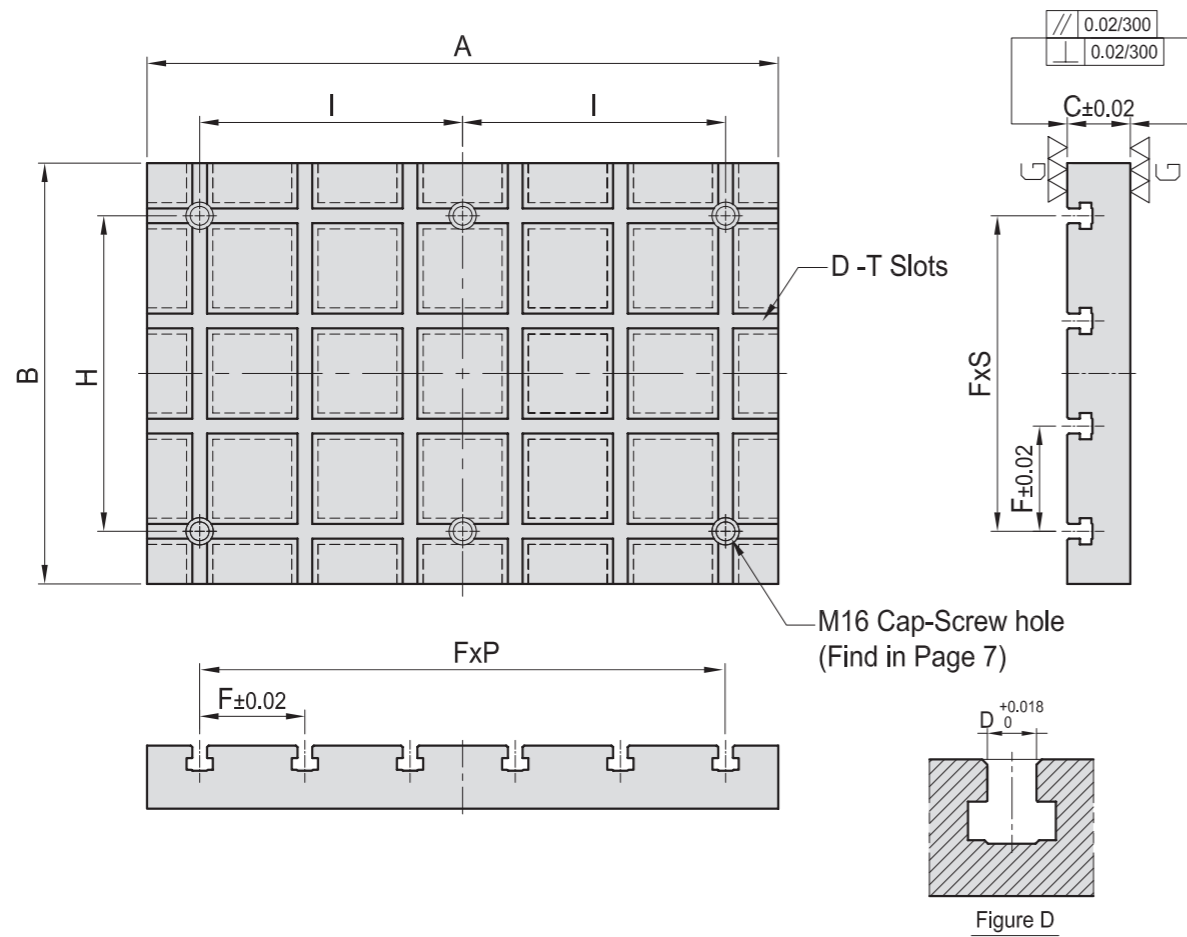
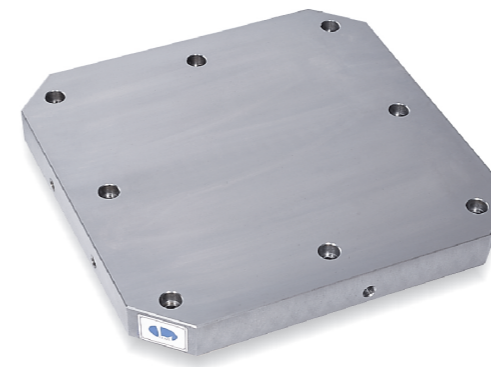
- Material: Cast Iron FC300(JIS) / GG30(DIN)
- Heat treated: Normalized
- Application: Vertical Machining Center.
- Features: T-Slots running in 2 directions, easily adapts to standardized jig components.



BP04

M/C BASE PLATE

- Material: Cast Iron FC300(JIS) / GG30(DIN)
- Heat treated: (Normalized)
- Application: Horizontal Machining Center.
- Features: Ready to accept a hole pattern for your special jig.



MODEL NO.	A	B	C	D	F	P	S	H	I	kg	MODEL NO.	A	B	C	D	F	P	S	H	I	kg
BP03-60400-0600-14		400					3			92	BP03-75400-0600-18		400				3				118
BP03-60500-0600-14	600	500	60	14	100	5	4	-	-	115	BP03-75500-0600-18	600	500	75	18	100	5	4	-	-	147
BP03-60600-0600-14		600					5			130	BP03-75600-0600-18		600				5				173
BP03-60400-0800-14	800	400					7			117	BP03-75400-0800-18	800	400	75	18	100	7	3	-	-	151
BP03-60450-0900-14	900	450	60	14	100		8			168	BP03-75450-0900-18	900	450	75	18	100	8	3	-	-	182
BP03-60500-1000-14	1000	500					9	4		198	BP03-75500-1000-18	1000	500				9	4			228
BP03-60600-1200-14	1200	600	60	14	100		11	5		264	BP03-75600-1200-18	1200	600	75	18	100	11	5	-	-	329

*Special Design Welcome !

MODEL NO.	A	B	C	D	Mounting holes	kg
BP04-50400-0400	50	400	320	55	4	57
BP04-50500-0500	50	500	400	75	8	88
BP04-50630-0630	50	630	500	100	8	140
BP04-50800-0800	50	800	640	135	8	225

*Special Design Welcome !

BP

BPA

BC

CP

SU

PT

SVF

ALV

OK-
VISE

OTHER

Column
for
Technical
Data

BP05

M/C BASE PLATE

- Material: Cast Iron FC300(JIS) / GG30(DIN)
- Heat treated(Normalized)
- Alignment Bushing: SUJ2(JIS) / 100Cr6(DIN), heat treated.
- Threaded Insert: S45C(JIS) / CK45(DIN), heat treated.
- MTP hole spacing: 50±0.02
- Application: Horizontal Machining Center.
- Features: Alignment bushing & thread insert at every hole location, easily adapts to standardized jig components.

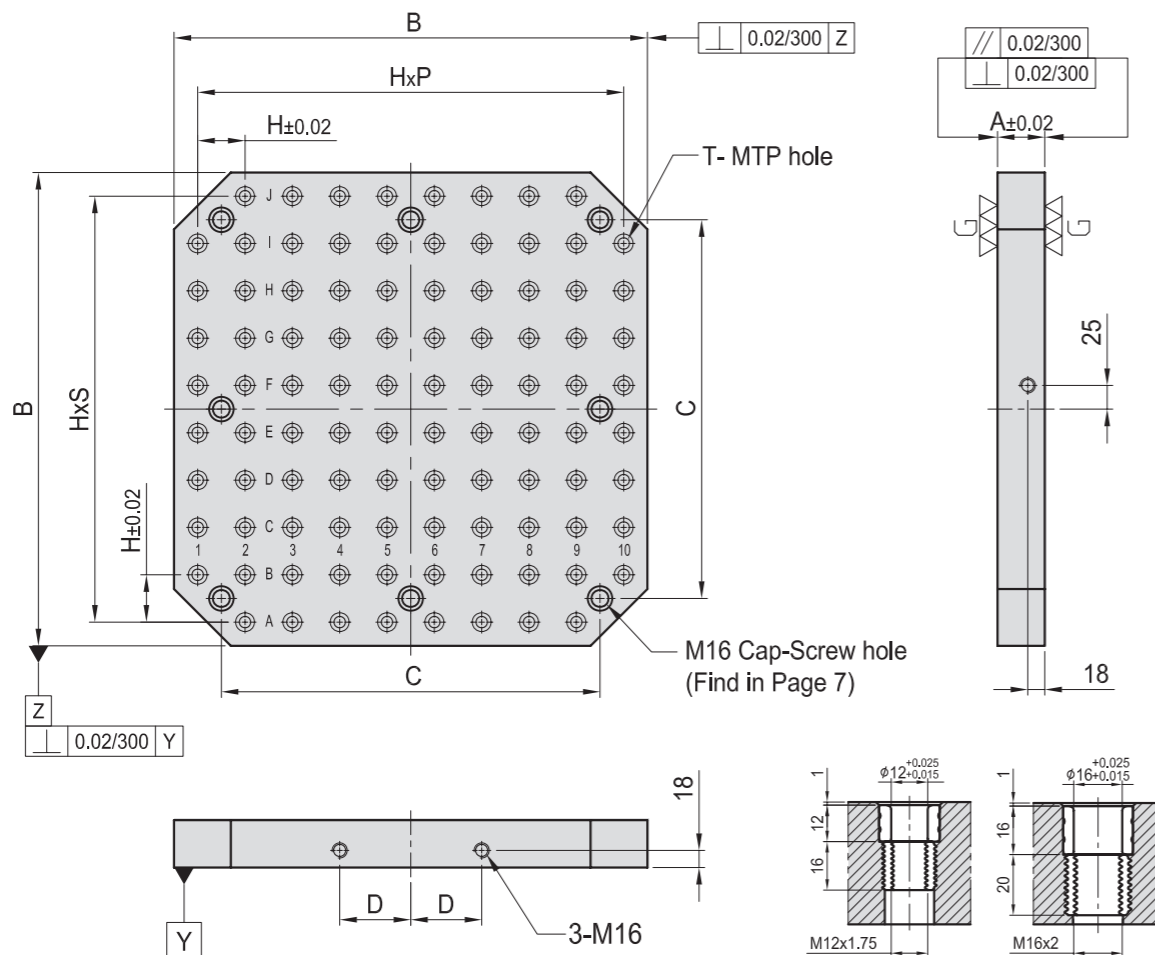
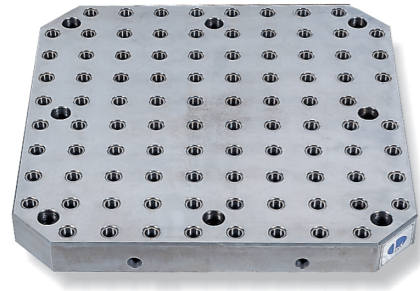


Figure T

MODEL NO.	A	B	C	D	T	H	P	S	MTP	Mounting holes	kg	
BP05-50400-0400-12	50	400	320	55	Ø12	M12	50	7	7	59	4	54
BP05-50500-0500-12		500	400	75				9	9	93	8	83
BP05-50630-0630-12	50	630	500	100	Ø12	M12	50	11	11	139	8	135
BP05-50800-0800-12		800	640	135				15	15	237		206
BP05-50400-0400-16	50	400	320	55	Ø16	M16	50	7	7	59	4	52
BP05-50500-0500-16		500	400	75				9	9	93	8	80
BP05-50630-0630-16	50	630	500	100	Ø16	M16	50	11	11	139	8	130
BP05-50800-0800-16		800	640	135				15	15	237		204

*Special Design Welcome !

BP06

M/C BASE PLATE

- Material: Cast Iron FC300(JIS) / GG30(DIN)
- Heat treated: Normalized
- Application: Horizontal Machining Center.
- Features: T-Slots running in 2 directions, easily adapts to standardized jig components.

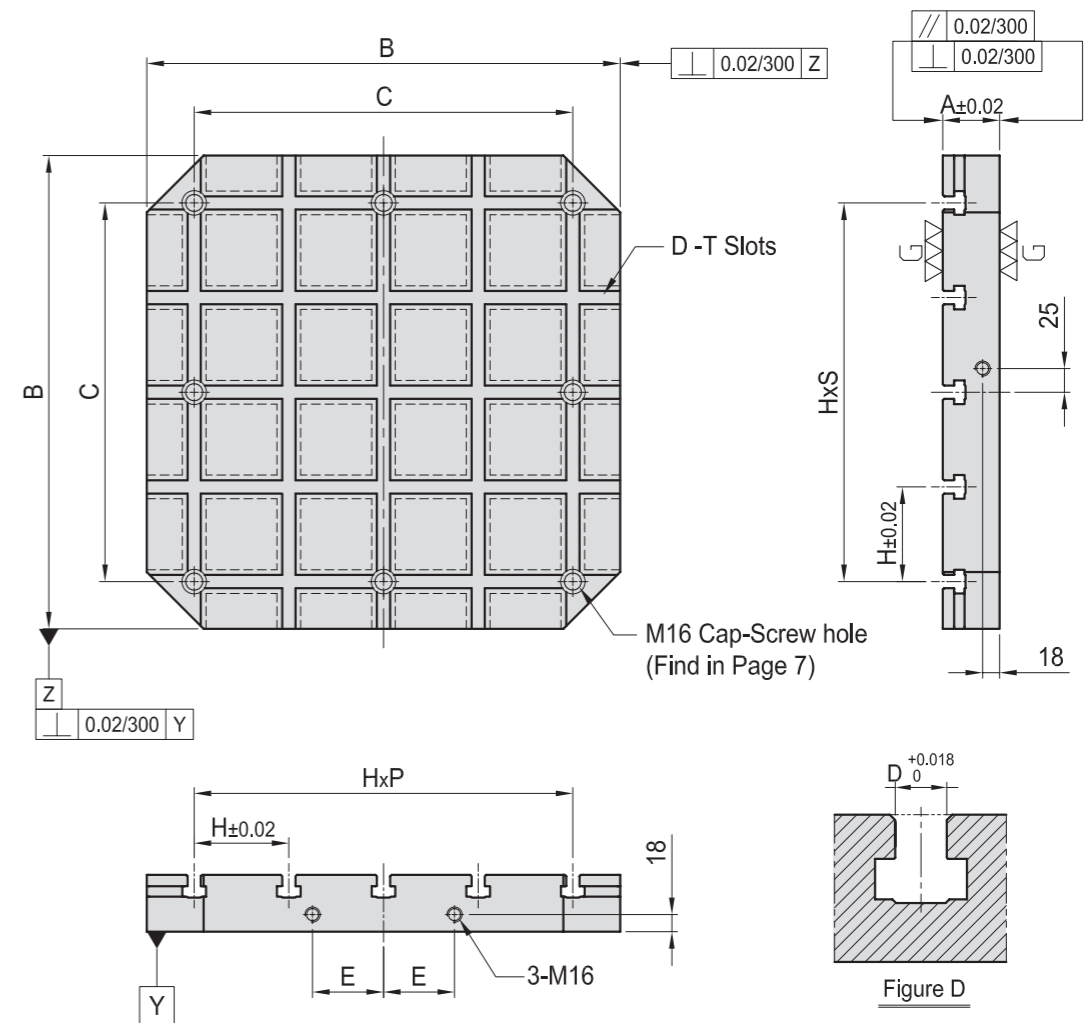


Figure D

MODEL NO.	A	B	C	D	E	H	P	S	Mounting holes	kg
BP06-60400-0400-14	60	400	320	14	55	80	4	4	4	56
BP06-60500-0500-14		500	400		75	100		8	90	
BP06-60630-0630-14	60	630	500	14	100	125	4	4	8	150
BP06-60800-0800-14		800	640		135	160		230		
BP06-75400-0400-18	75	400	320	18	55	80	4	4	4	68
BP06-75500-0500-18		500	400		75	100		8	108	
BP06-75630-0630-18	75	630	500	18	100	125	4	4	8	180
BP06-75800-0800-18		800	640		135	160		295		

*Special Design Welcome !

BP

BPA

BC

CP

SU

PT

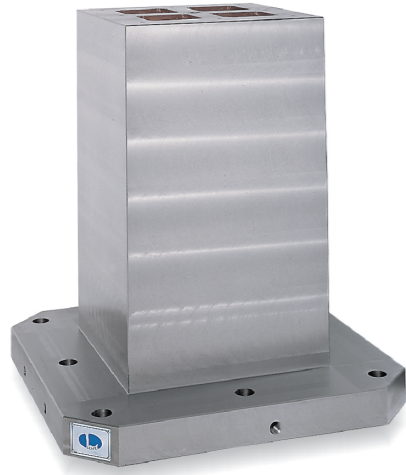
SVF

ALV

OK-
VISE

OTHER

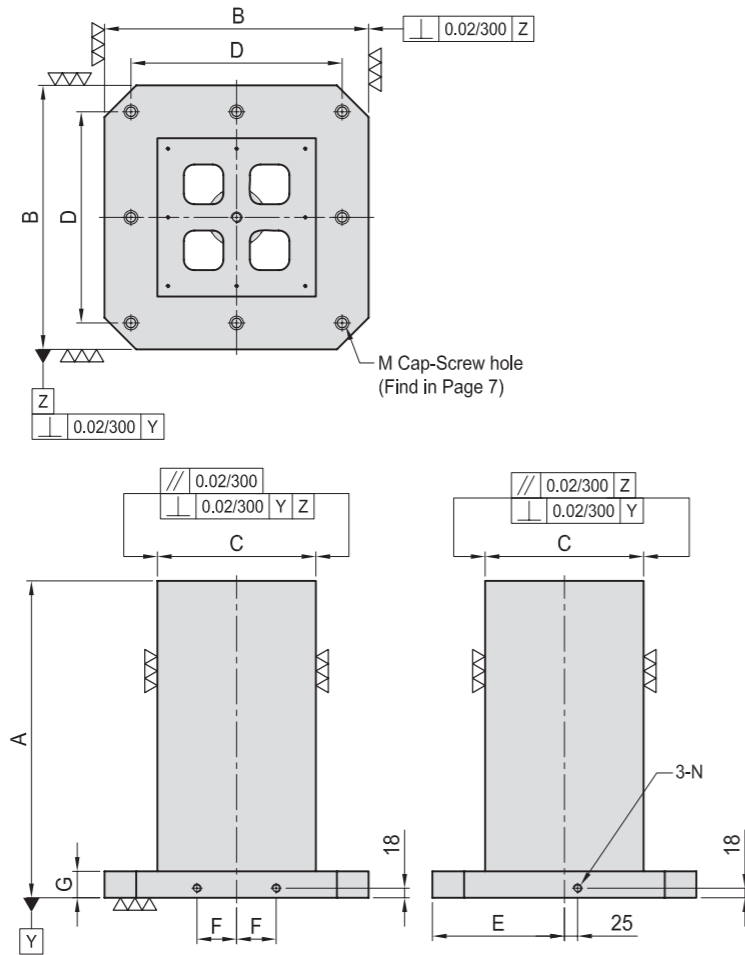
Column
for
Technical
Data



BP07

SQUARE TOOLING COLUMN

- Material: Cast Iron FC300(JIS) / GG30(DIN)
- Heat treated (Normalized)
- Application: Horizontal Machining Center.
- Features: Ready to accept a hole pattern for your special jig.
- Eye bolt & top cover included.



MODEL NO.	A	B	C	D	E	F	G	M	N	Mounting holes	kg
BP07-300300-0500	500	300	150	250	150	40	50	M12	M12	4	90
BP07-400400-0500	500	400	250	320	200	55	50	M16	M16	4	160
BP07-400400-0650	650										210
BP07-500500-0600	600	500	300	400	250	75	50	M16	M16	8	250
BP07-500500-0750	750										310
BP07-630630-0700	700	630	350	500	315	100	50	M16	M16	8	400
BP07-630630-0850	850										460
BP07-800800-0800	800	800	500	640	400	135	50	M16	M16	8	680
BP07-800800-1000	1000										800
BP07-10001000-1000	1000	1000	600	800	500	165	55	M20	M16	8	1164
BP07-10001000-1250	1250										1391

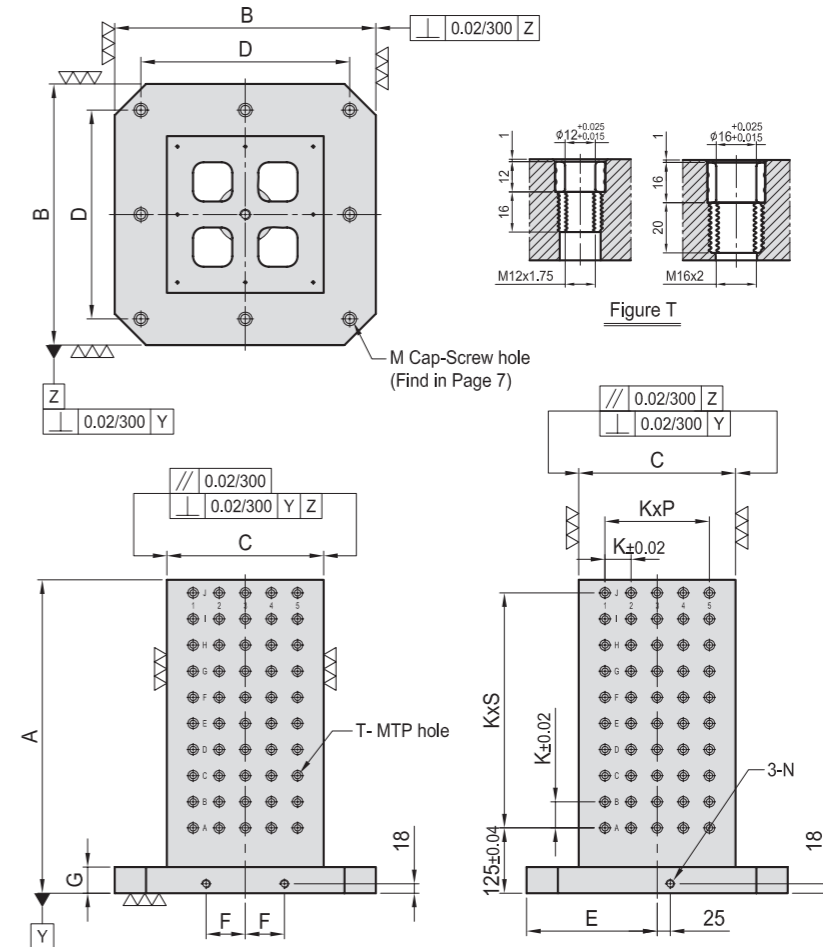
*Special Design Welcome !



BP08

SQUARE TOOLING COLUMN

- Material: Cast Iron FC300 (JIS) / GG30 (DIN)
- Heat treated (Normalized)
- Alignment bushing: SUJ2(JIS) / 100Cr6(DIN), heat treated
- Threaded Insert: S45C(JIS) / CK45(DIN), heat treated
- MTP hole spacing: 50±0.02
- Application: Horizontal Machining Center.
- Features: Alignment bushing & thread insert at every hole location, easily adapts to standardized jig components.
- Eye bolt & top cover included.



MODEL NO.	A	B	C	D	E	F	G	K	P	S	T	M	N	MTP	Mounting holes	kg	
BP08-300300-0500-12	500	300	150	250	150	40	50	50	1	7	Ø12	M12	M12	M12	64	4	90
BP08-400400-0500-12	500	400	250	320	200	55	50	50	3	7	Ø12	M12	M16	M16	128	4	155
BP08-400400-0650-12	650																200
BP08-500500-0600-12	600	500	300	400	250	75	50	50	4	9	Ø12	M12	M16	M16	200	8	240
BP08-500500-0750-12	750																300
BP08-630630-0700-12	700	630	350	500	315	100	50	50	5	11	Ø12	M12	M16	M16	288	8	360
BP08-630630-0850-12	850																360
BP08-800800-0800-12	800	800	500	640	400	135	50	50	8	13	Ø12	M12	M16	M16	504	8	635
BP08-800800-1000-12	1000																780
BP08-10001000-1000-12	1000	1000	600	800	500	165	55	50	10	17	Ø12	M12	M20	M16	792	8	1164
BP08-10001000-1250-12	1250																1391

*Special Design Welcome !

BP

BPA

BC

CP

SU

PT

SVF

ALV

OK-
VISE

OTHER

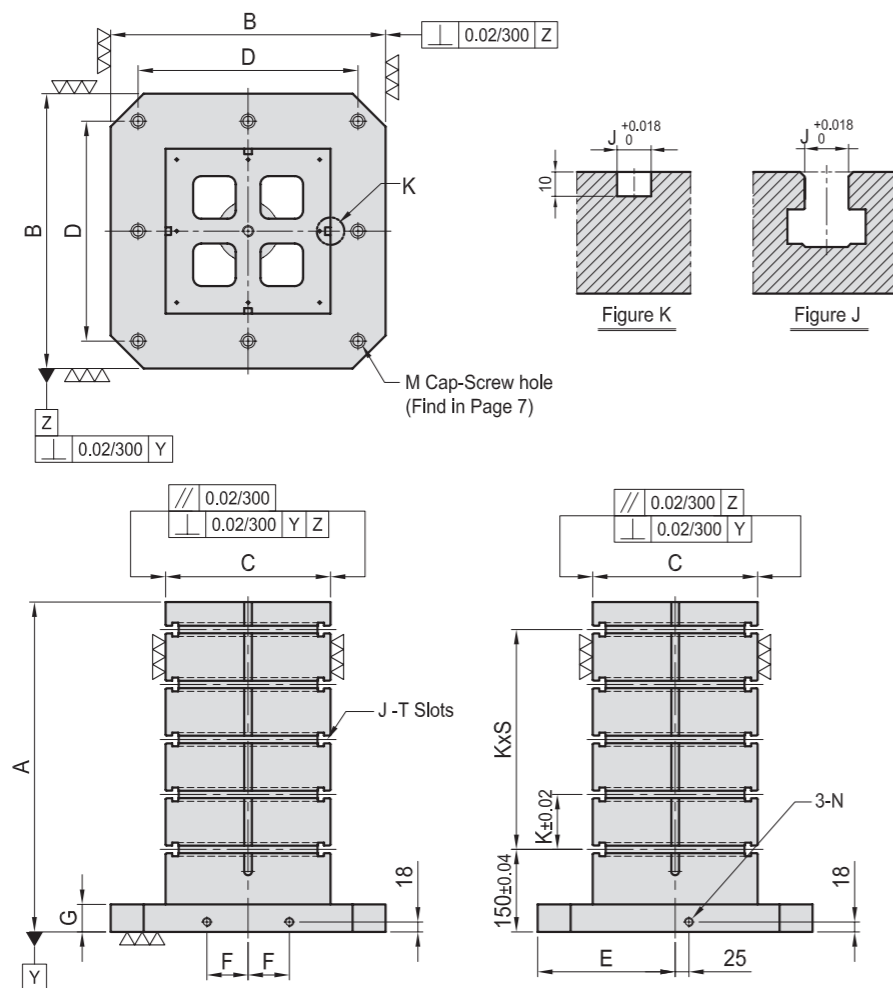
Column
for
Technical
Data



BP09

SQUARE TOOLING COLUMN

- Material: Cast Iron FC300(JIS) / GG30(DIN)
- Heat treated (Normalized)
- Application: Horizontal Machining Center.
- Features: T-Slots running horizontally, key-way running vertically, easily adapts to standardized jig components.
- Eye bolt & top cover included.



MODEL NO.	A	B	C	D	E	F	G	M	N	K	S	J	Mounting holes	kg
BP09-400400-0500-14	500	400	250	320	200	55	50	M16	M16	100	3	14	4	160
BP09-400400-0650-14	650	400	250	320	200	55	50	M16	M16	100	4	14	4	200
BP09-500500-0600-14	600	500	300	400	250	75	50	M16	M16	100	4	14	8	270
BP09-500500-0750-14	750	500	300	400	250	75	50	M16	M16	100	5	14	8	300
BP09-630630-0700-14	700	630	350	500	315	100	50	M16	M16	125	4	14	8	375
BP09-630630-0850-14	850	630	350	500	315	100	50	M16	M16	125	5	14	8	460
BP09-800800-0800-14	800	800	500	640	400	135	50	M16	M16	150	4	14	8	655
BP09-800800-1000-14	1000	800	500	640	400	135	50	M16	M16	150	5	14	8	800
BP09-10001000-1000-14	1000	1000	600	800	500	165	55	M20	M16	160	5	14	8	1146
BP09-10001000-1250-14	1250	1000	600	800	500	165	55	M20	M16	160	6	14	8	1358

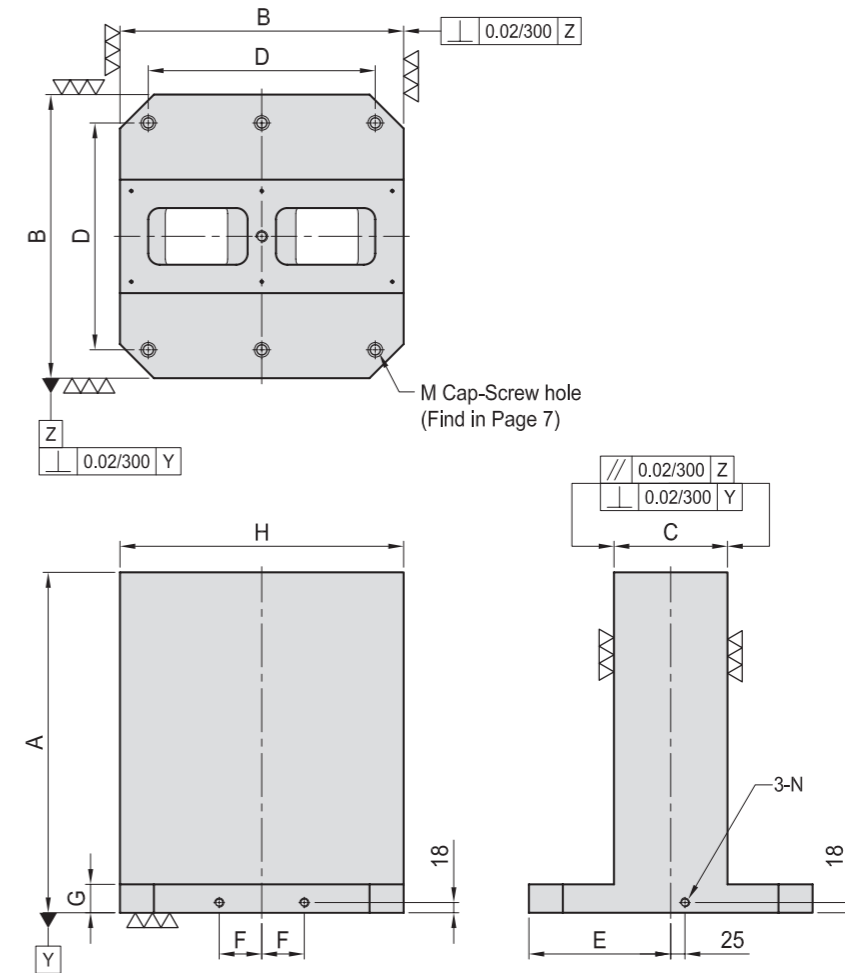
*Special Design Welcome !



BP10

DOUBLE SIDED TOOLING COLUMN

- Material: Cast Iron FC300(JIS) / GG30(DIN)
- Heat treated (Normalized)
- Application: Horizontal Machining Center.
- Features: Ready to accept a hole pattern for your special jig.
- Eye bolt & top cover included.



MODEL NO.	A	B	C	D	E	F	G	H	M	N	Mounting holes	kg
BP10-300300-0500	500	300	80	250	150	40	50	300	M12	M12	4	115
BP10-400400-0500	500	400	150	320	200	55	50	400	M16	M16	4	170
BP10-400400-0650	650	400	150	320	200	55	50	400	M16	M16	4	215
BP10-500500-0600	600	500	200	400	250	75	50	500	M16	M16	6	270
BP10-500500-0750	750	500	200	400	250	75	50	500	M16	M16	6	350
BP10-630630-0700	700	630	250	500	315	100	50	630	M16	M16	6	445
BP10-630630-0850	850	630	250	500	315	100	50	630	M16	M16	6	520
BP10-800800-0800	800	800	300	640	400	135	50	800	M16	M16	6	675
BP10-800800-1000	1000	800	300	640	400	135	50	800	M16	M16	6	815
BP10-10001000-1000	1000	1000	350	800	500	165	55	1000	M20	M16	6	1162
BP10-10001000-1250	1250	1000	350	800	500	165	55	1000	M20	M16	6	1377

*Special Design Welcome !

BP

BPA

BC

CP

SU

PT

SVF

ALV

OK-
VISE

OTHER

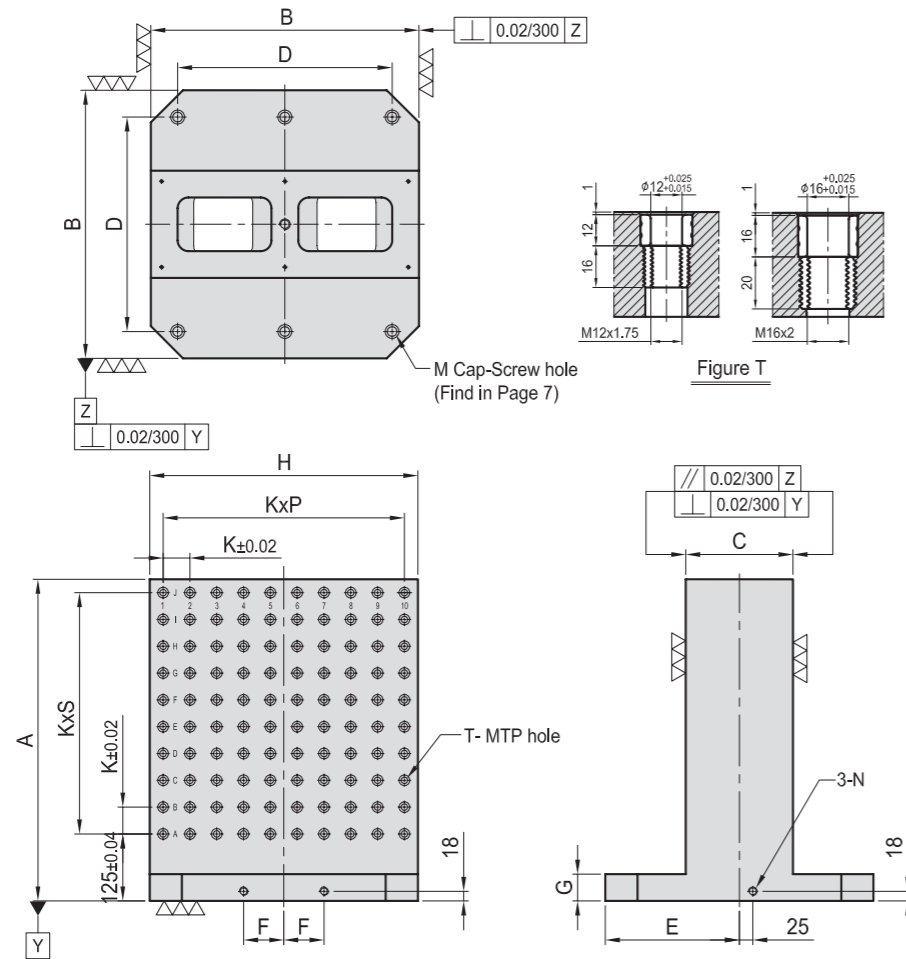
Column
for
Technical
Data



BP11

DOUBLE SIDED TOOLING COLUMN

- Material: Cast Iron FC300(JIS) / GG30(DIN)
- Heat treated (Normalized)
- Alignment Bushing: SUJ2(JIS) / 100Cr6 (DIN), heat treated
- Threaded Insert: S45C(JIS) / CK45(DIN), heat treated
- MTP hole spacing: 50±0.02
- Application: Horizontal Machining Center.
- Features: Alignment bushing & thread insert at every hole location, easily adapts to standardized jig components.
- Eye bolt & top cover included.



MODEL NO.	A	B	C	D	E	F	G	H	K	P	S	T	M	N	MTP	Mounting holes	kg
BP11-300300-0500-12	500	300	80	250	150	40	50	300	5	7	Ø12	M12	M12	M12	96	4	110
BP11-400400-0500-12	500	400	150	320	200	55	50	400	5	7	Ø12	M12	M16	M16	128	4	165
BP11-400400-0650-12	650	400	150	320	200	55	50	400	5	7	Ø12	M12	M16	M16	176	4	210
BP11-500500-0600-12	600	500	200	400	250	75	50	500	9	9	Ø12	M12	M16	M16	200	6	265
BP11-500500-0750-12	750	500	200	400	250	75	50	500	9	9	Ø12	M12	M16	M16	260	6	335
BP11-630630-0700-12	700	630	250	500	315	100	50	630	11	11	Ø12	M12	M16	M16	288	6	435
BP11-630630-0850-12	850	630	250	500	315	100	50	630	11	11	Ø12	M12	M16	M16	360	6	515
BP11-800800-0800-12	800	800	300	640	400	135	50	800	14	13	Ø12	M12	M16	M16	420	6	660
BP11-800800-1000-12	1000	800	300	640	400	135	50	800	14	13	Ø12	M12	M16	M16	540	6	800
BP11-10001000-1000-12	1000	1000	350	800	500	165	55	1000	18	17	Ø12	M12	M20	M16	684	6	1158
BP11-10001000-1250-12	1250	1000	350	800	500	165	55	1000	18	22	Ø12	M12	M20	M16	874	6	1375

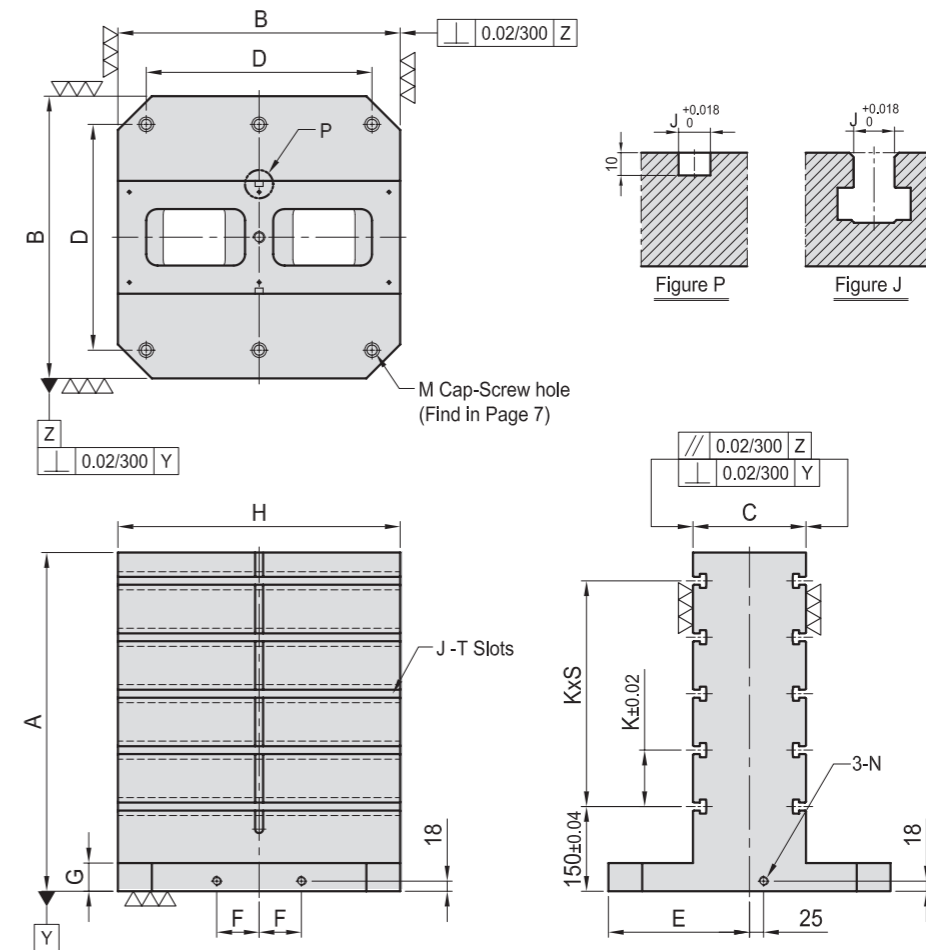
*Special Design Welcome !



BP12

DOUBLE SIDED TOOLING COLUMN

- Material: Cast Iron FC300(JIS) / GG30(DIN)
- Heat treated (Normalized)
- Application: Horizontal Machining Center.
- Features: T-Slots running horizontally, key-way running vertically, easily adapts to standardized jig components.
- Eye bolt & top cover included.



MODEL NO.	A	B	C	D	E	F	G	M	N	H	J	K	S	Mounting holes	kg
BP12-400400-0500-14	500	400	150	320	200	55	50	M16	M16	400	14	100	3	4	170
BP12-400400-0650-14	650	400	150	320	200	55	50	M16	M16	400	14	100	4	4	220
BP12-500500-0600-14	600	500	200	400	250	75	50	M16	M16	500	14	100	4	6	290
BP12-500500-0750-14	750	500	200	400	250	75	50	M16	M16	500	14	100	5	6	335
BP12-630630-0700-14	700	630	250	500	315	100	50	M16	M16	630	14	125	4	6	440
BP12-630630-0850-14	850	630	250	500	315	100	50	M16	M16	630	14	125	5	6	515
BP12-800800-0800-14	800	800	300	640	400	135	50	M16	M16	800	14	150	4	6	670
BP12-800800-1000-14	1000	800	300	640	400	135	50	M16	M16	800	14	150	5	6	790
BP12-10001000-1000-14	1000	1000	350	800	500	165	55	M20	M16	1000	14	160	5	6	1158
BP12-10001000-1250-14	1250	1000	350	800	500	165	55	M20	M16	1000	14	160	6	6	1375

*Special Design Welcome !



BP13

MODULAR TOOLING COLUMN

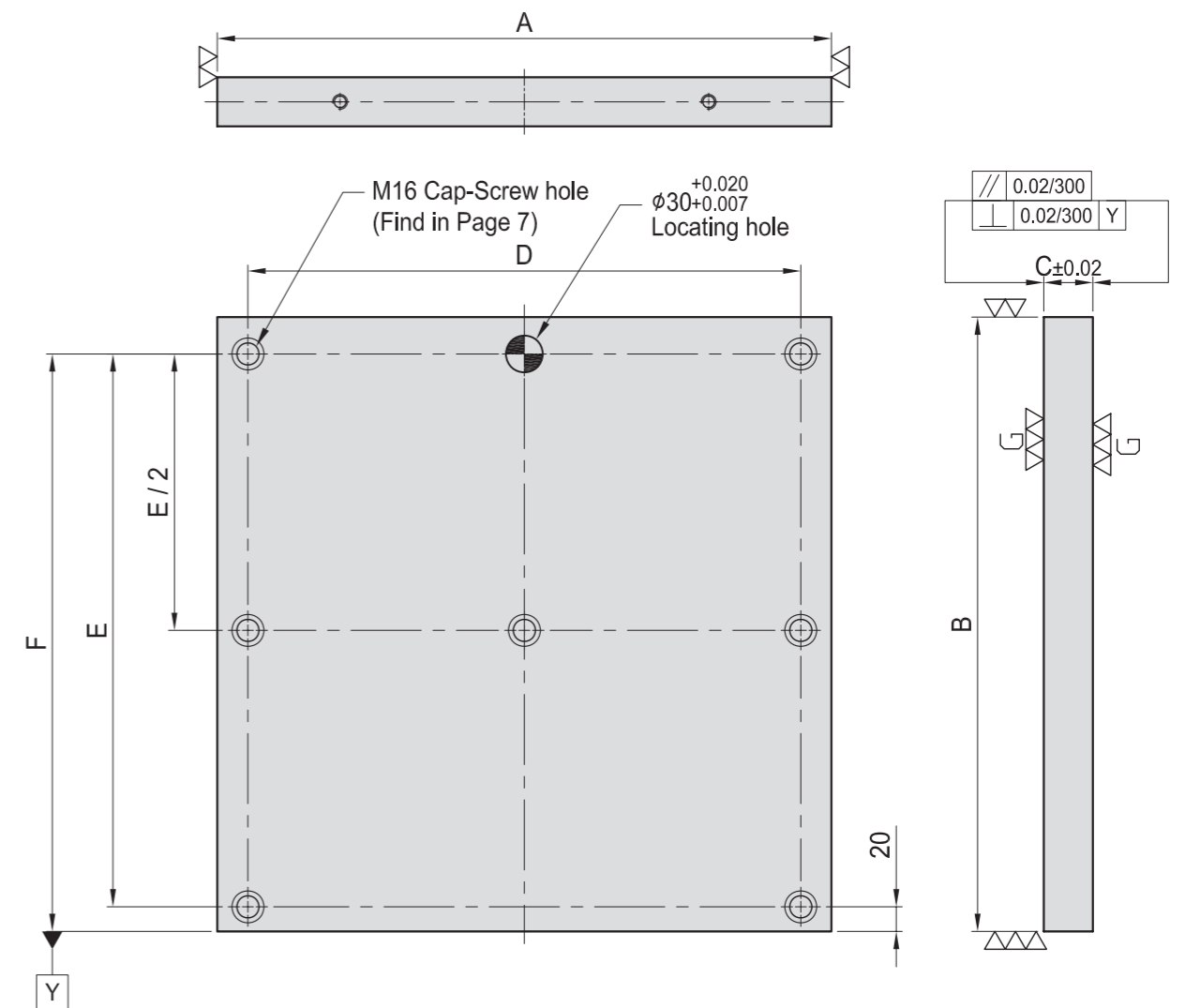
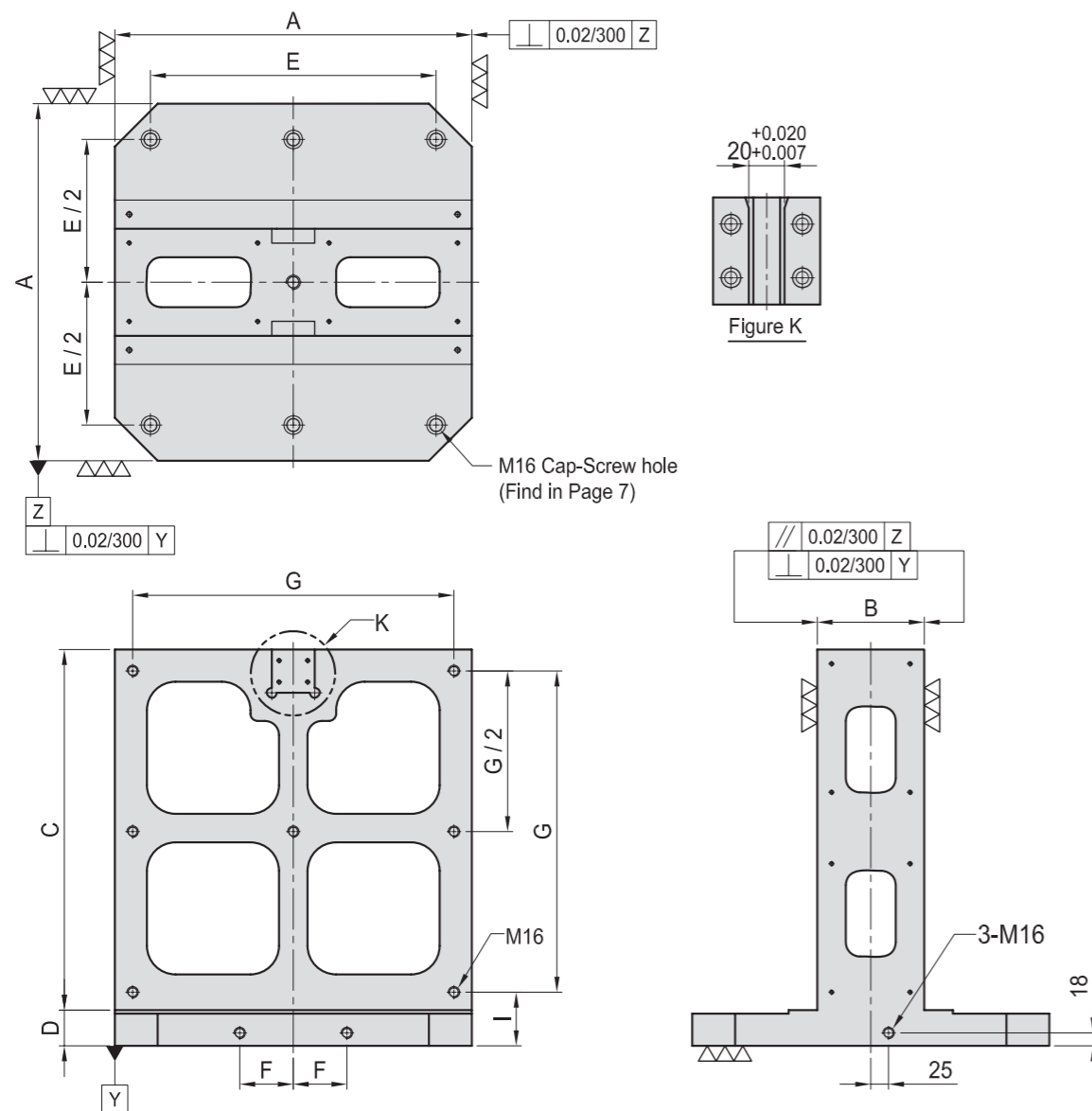
- Material: Cast Iron FC300(JIS) / GG30(DIN)
- Heat treated (Normalized)
- Application: Horizontal Machining Center.
- Features: Modular quick-change system, simple 3 point mounting, use with BP14 & BP15 subplates.
- Eye bolt, top cover & side covers included.



BP14

SUB-PLATE

- Material: Cast Iron FC300(JIS) / GG30(DIN)
- Heat treated (Normalized)
- Application: Modular quick change subplate, use with BP13.
- Features: Ready to accept a hole pattern for your special jig.



MODEL NO.	A	B	C	D	E	F	G	I	Mounting holes	kg
BP13-400400-0450	400	130	400	50	320	55	350	70	4	125
BP13-500500-0555	500	150	500	55	400	75	450	75	6	178
BP13-630630-0690	630	220	630	60	500	100	580	80	6	350
BP13-800800-0860	800	250	800	60	640	135	750	80	6	515

*Special Design Welcome !

MODEL NO.	A	B	C	D	E	F	Mounting holes	kg
BP14-40400-0400	400	400	40	350	350	370	5	46
BP14-40500-0500	500	500	40	450	450	470	7	72
BP14-40630-0630	630	630	40	580	580	600	7	114
BP14-50800-0800	800	800	50	750	750	770	7	232

*Special Design Welcome !

BP

BPA

BC

CP

SU

PT

SVF

ALV

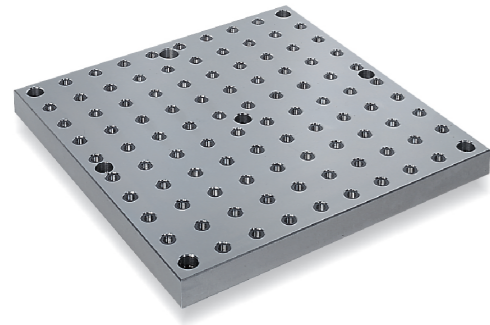
OK-
VISE

OTHER

Column
for
Technical
Data

BP15

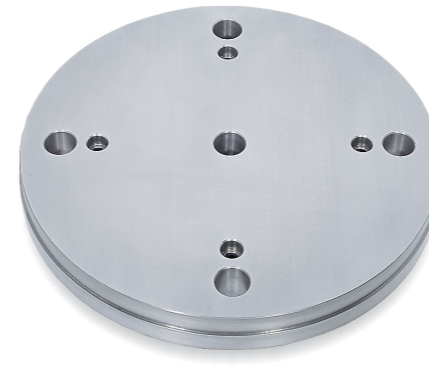
SUB-PLATE



- Material: Cast Iron FC300(JIS) / GG30(DIN)
- Heat treated (Normalized)
- Alignment Bushing: SUJ2(JIS) / 100Cr6 (DIN), heat treated
- Threaded Insert: S45C(JIS) / CK45(DIN), heat treated
- MTP hole spacing: 50 ± 0.02
- Application: Modular quick change subplate, use with BP13.
- Features: Alignment bushing & thread insert at every hole location, easily adapts to standardized jig components.

BP16

ROUND BASE PLATE



- Material: Cast Iron FC300(JIS) / GG30(DIN)
- Heat treated (Normalized)
- Application: NC Rotary Table or Indexer.
- Features: Ready to accept a hole pattern for your special jig.

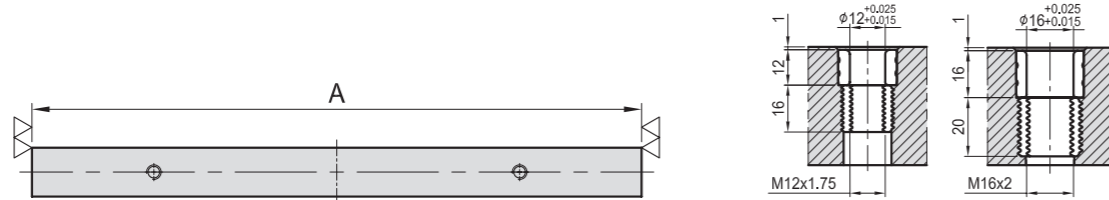
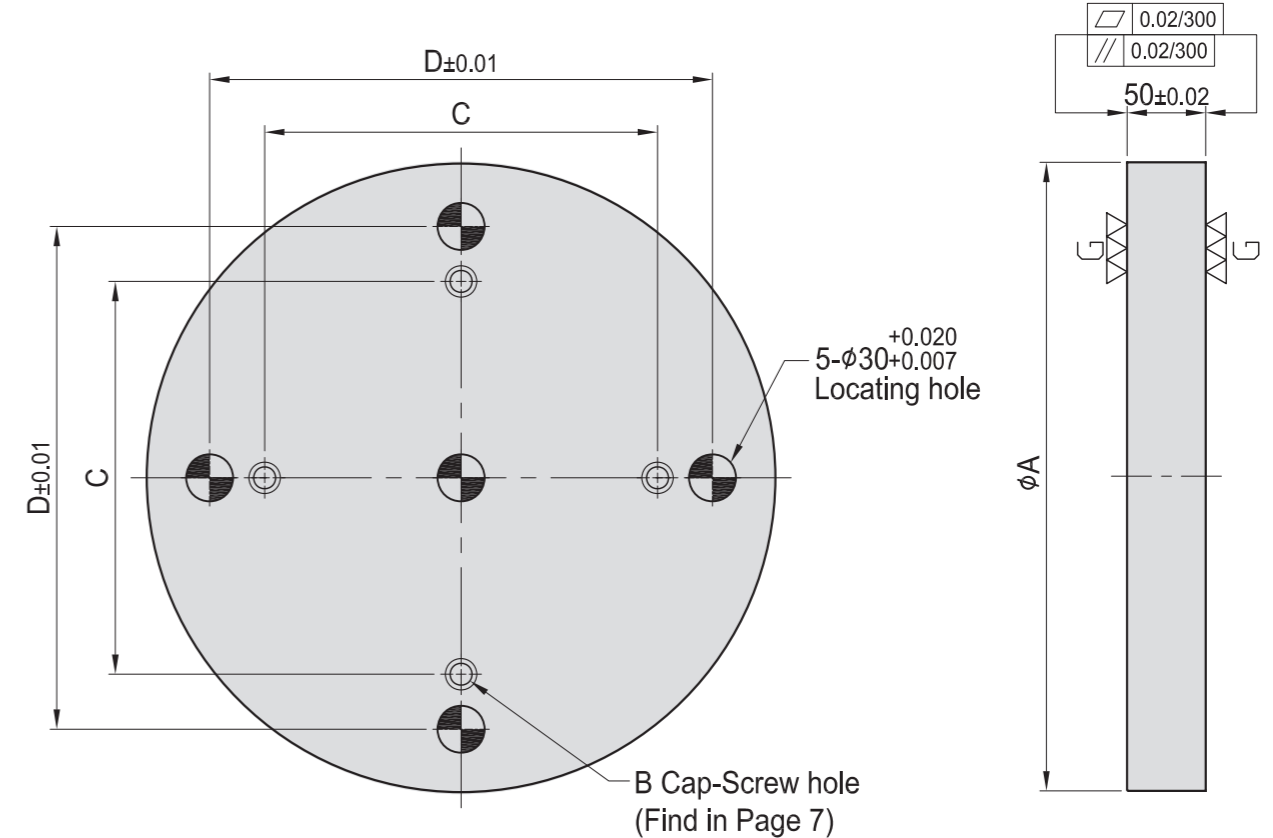
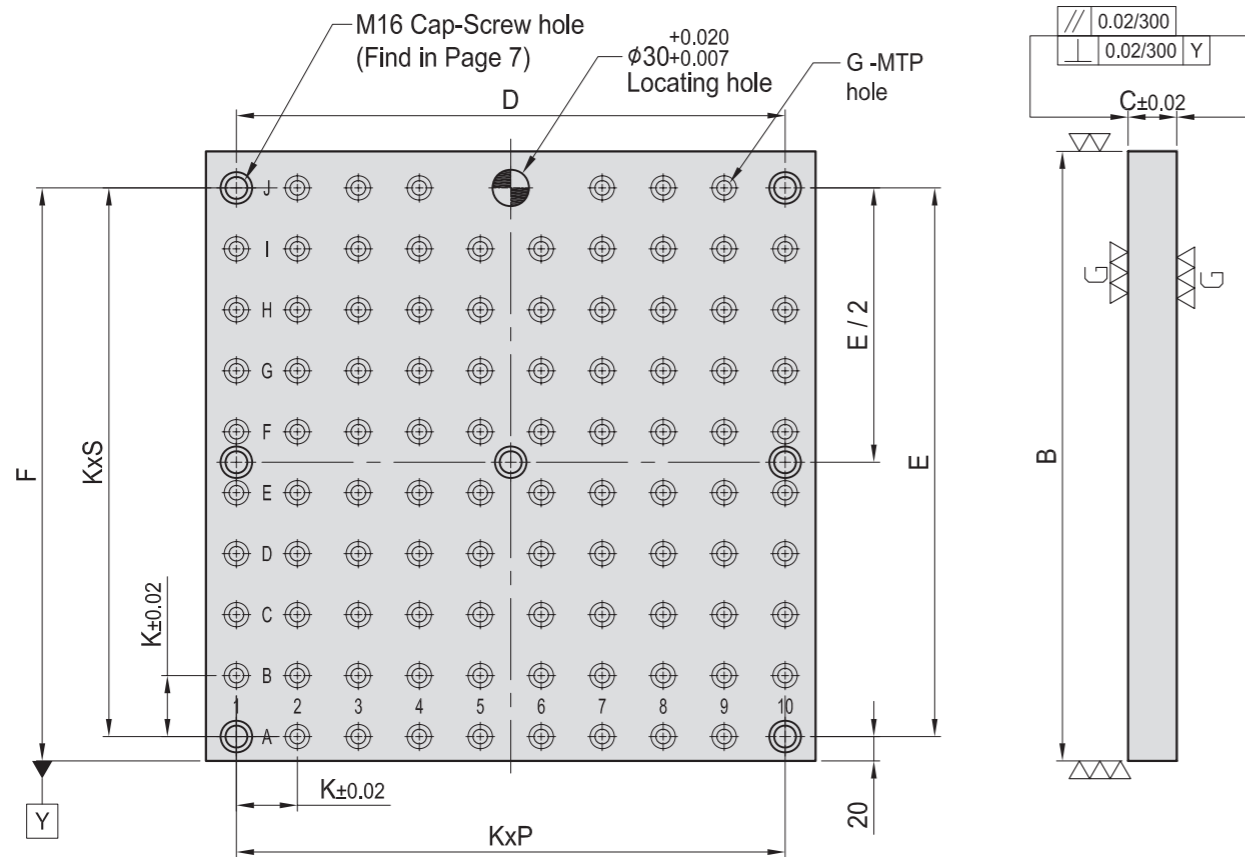


Figure G



MODEL NO.	A	B	C	D	E	F	K	P	S	G	MTP	Mounting holes	kg	
BP15-40400-0400-12	400	400	40	350	350	370	7	7	7	Ø12	M12	58	5	42
BP15-40500-0500-12	500	500	40	450	450	470	9	9	9	Ø12	M12	94	7	69
BP15-40630-0630-12	630	630	40	580	580	600	11	11	11	Ø12	M12	138	7	108
BP15-50800-0800-12	800	800	50	750	750	770	15	15	15	Ø12	M12	250	7	220

*Special Design Welcome !

MODEL NO.	A	B	C	D	kg
BP16-50-0300	300	M12	150	220	25
BP16-50-0400	400		250	320	40
BP16-50-0500	500	M16	300	400	65
BP16-50-0600	600		400	500	95

*Special Design Welcome !

BP

BPA

BC

CP

SU

PT

SVF

ALV

OK-
VISE

OTHER

Column
for
Technical
Data

BP17

ROUND BASE PLATE

- Material: Cast Iron FC300(JIS) / GG30(DIN)
- Heat treated (Normalized)
- Alignment Bushing: SUJ2(JIS) / 100Cr6(DIN), heat treated
- Threaded Insert: S45C(JIS) / CK45(DIN), heat treated
- MTP hole spacing: 50 ± 0.02
- Application: NC Rotary Table or Indexer.
- Features: Alignment bushing & thread insert at every hole location, easily adapts to standardized jig components.



BP18

ROUND BASE PLATE

- Material: Cast Iron FC300(JIS) / GG30(DIN)
- Heat treated (Normalized)
- Application: NC Rotary Table or Indexer.
- Features: T-Slots running in 2 directions, easily adapts to standardized jig components.

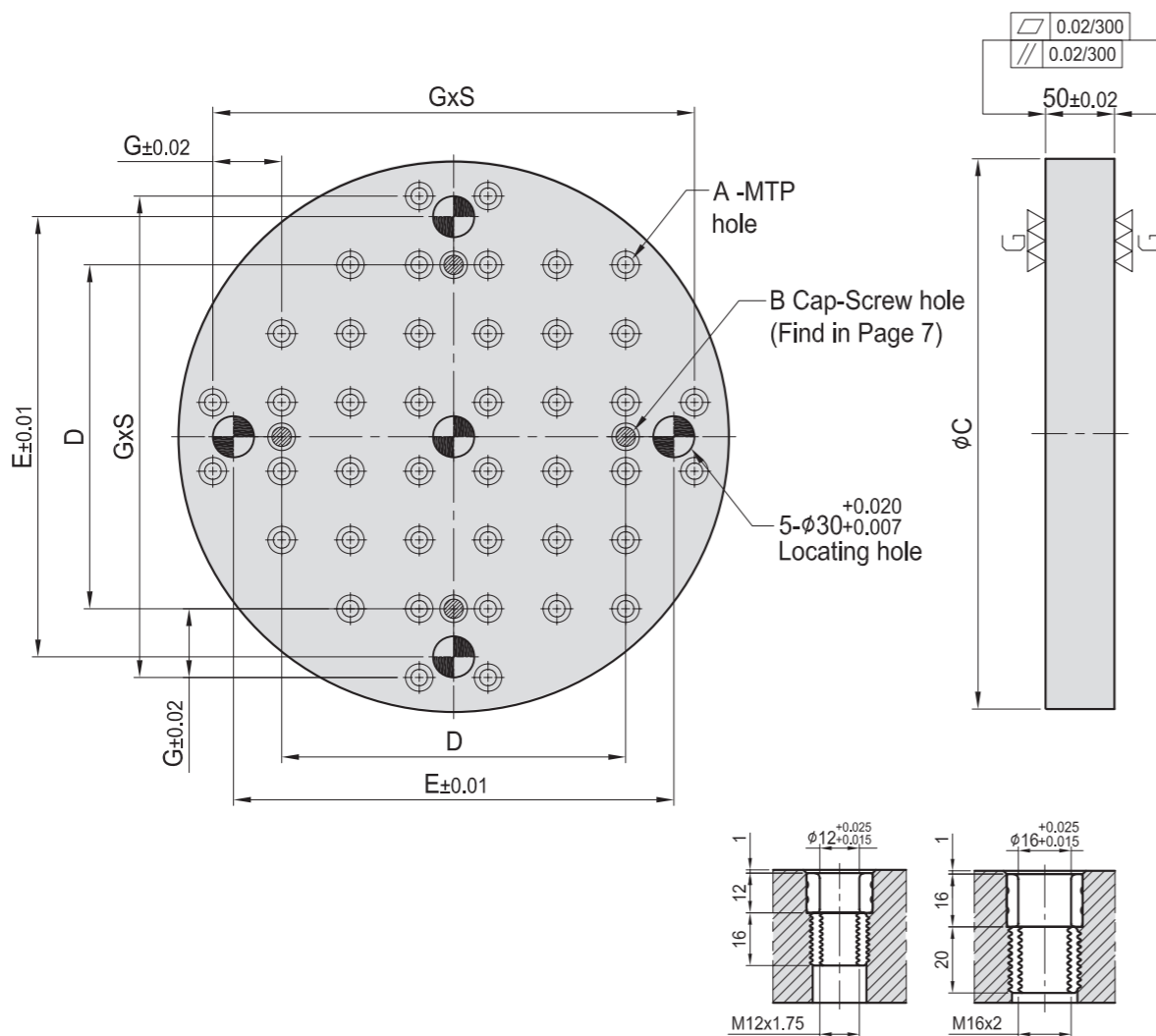
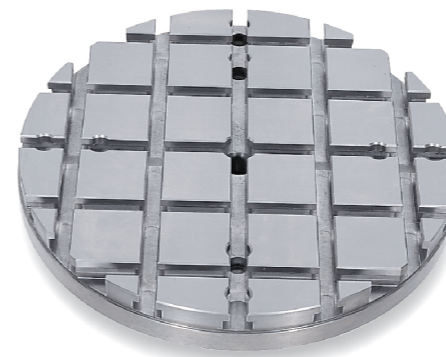


Figure A

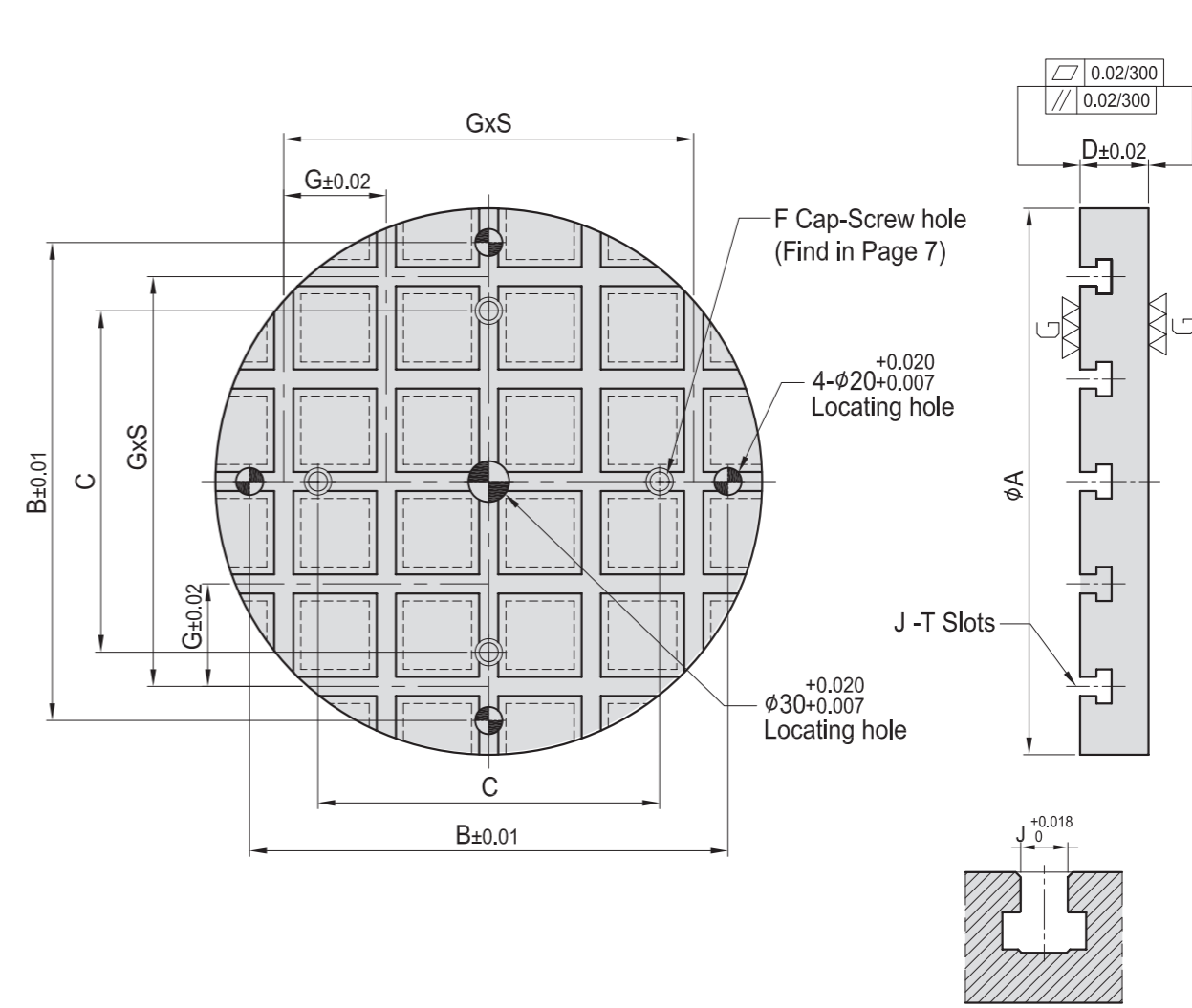


Figure J

MODEL NO.	A	B	C	D	E	G	S	MTP	kg
BP17-50-0300-12	Ø12	M12	M12	300	150	220	50	5	23
BP17-50-0400-12				400	250	320		7	42
BP17-50-0500-12	Ø12	M12	M16	500	300	400	50	9	70
BP17-50-0600-12				600	400	500		11	98
BP17-50-0500-16	Ø16	M16	M16	500	300	400	50	9	68
BP17-50-0600-16				600	400	500		11	96

*Special Design Welcome !

MODEL NO.	A	B	C	D	F	G	S	J	kg
BP18-50-0300-14	300	250	150	50	M12	75	2	14	22
BP18-50-0400-14	400	350	250						4
BP18-65-0500-18	500	450	300	65	M16	100	4	18	74
BP18-65-0600-18	600	550	400						4

*Special Design Welcome !

BP

BPA

BC

CP

SU

PT

SVF

ALV

OK-
VISE

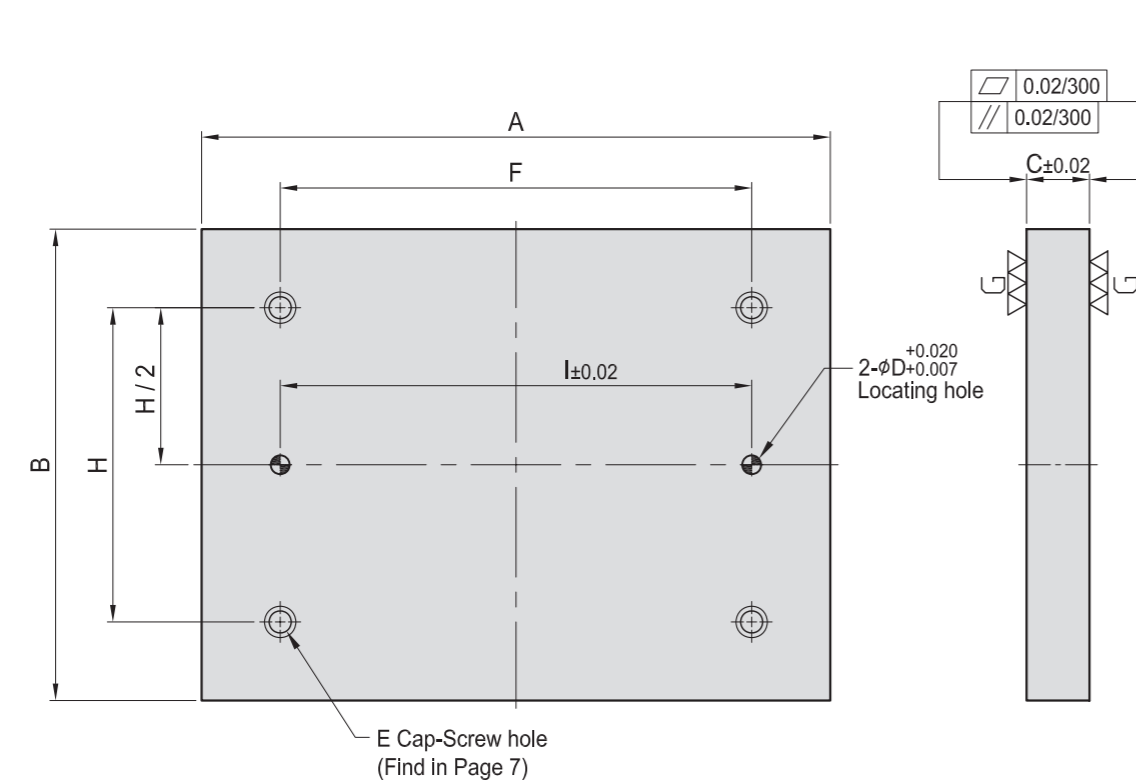
OTHER

Column
for
Technical
Data

BP19

SUB-PLATE

- Material: S45C(JIS) / CK45(DIN)
- Application: Multipurpose subplate.
- Features: Ready to accept a hole pattern for your special jig.



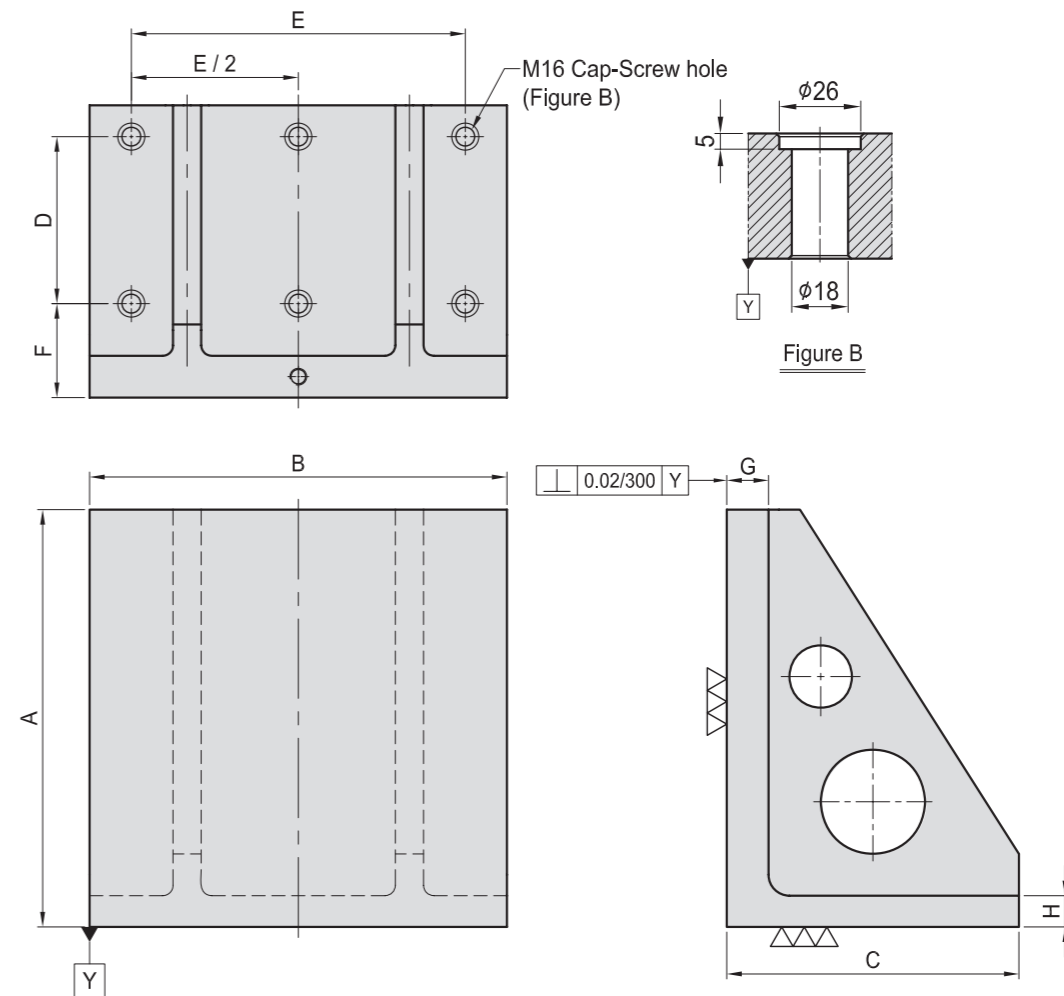
MODEL NO.	A	B	C	D	E	F	H	I	kg	MODEL NO.	A	B	C	D	E	F	H	I	kg
BP19-30150-0200-12	200	150	30	12	M12	100	100	100	8.0	BP19-30150-0200-16	200	150	30	16	M16	100	100	100	8.0
BP19-30150-0300-12	300					200		200	11.0	BP19-30150-0300-16	300					200		200	11.0
BP19-30200-0200-12	200	200	30	12	M12	100	100	100	9.5	BP19-30200-0200-16	200	200	30	16	M16	100	100	100	9.5
BP19-30200-0300-12	300					200		200	14.5	BP19-30200-0300-16	300					200		200	14.5
BP19-30300-0300-12	300	300	30	12	M12	200	200	200	21.5	BP19-30300-0300-16	300	300	30	16	M16	200	200	200	21.5
BP19-40300-0400-12	400					300		300	38.0	BP19-40300-0400-16	400					300		300	38.0
BP19-40400-0400-12	400	400	40	12	M12	300	300	300	51.0	BP19-40400-0400-16	400	400	40	16	M16	300	300	300	51.0
BP19-40400-0500-12	500					400		400	63.0	BP19-40400-0500-16	500					400		400	63.0

*Special Design Welcome !

BP20

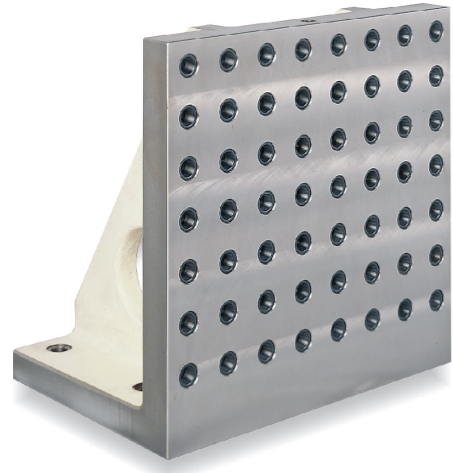
M/C ANGLE PLATE

- Material: Cast Iron FC300(JIS) / GG30(DIN)
- Heat treated (Normalized)
- Application: HMC / VMC
- Features: Ready to accept a hole pattern for your special jig.



MODEL NO.	A	B	C	D	E	F	G	H	Mounting holes	kg
BP20-220300-0300	300	300	220	100	250	90	40	30	6	50
BP20-280400-0400	400	400	280	160	320					90
BP20-340500-0500	500	500	340	200	400	90	50	35	6	165
BP20-435630-0630	630	630	435	250	500					100
BP20-525800-0800	800	800	525	320	640	115	50	45	6	475

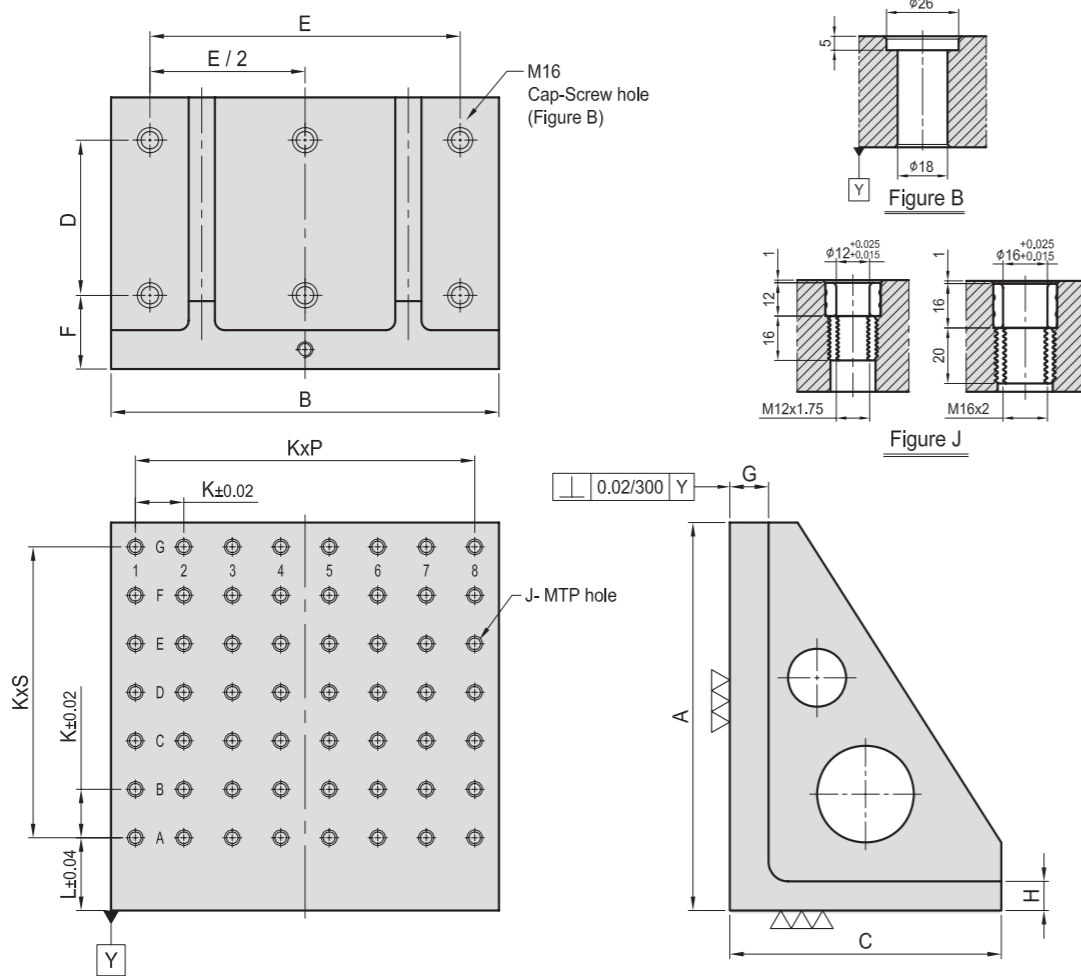
*Special Design Welcome !



BP21

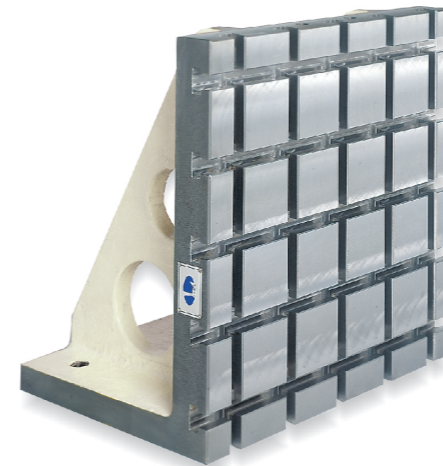
M/C ANGLE PLATE

- Material: Cast Iron FC300(JIS) / GG30(DIN)
- Heat treated (Normalized)
- Alignment Bushing: SUJ2(JIS) / 100Cr6(DIN), heat treated
- Threaded Insert: S45C(JIS) / CK45(DIN), heat treated
- MTP hole spacing: 50 ± 0.02
- Application: HMC / VMC.
- Features: Alignment bushing & thread insert at every hole location, easily adapts to standardized jig components.



MODEL NO.	A	B	C	D	E	F	G	H	J	K	L	P	S	MTP	Mounting holes	kg	
BP21-220300-0300-12	300	300	220	100	250	90	40	30	Ø12	M12	50	75	5	4	30	6	50
BP21-280400-0400-12	400	400	280	160	320								7	6	56		
BP21-340500-0500-12	500	500	340	200	400	90	50	35	Ø12	M12	50	75	9	8	90	6	173
BP21-435630-0630-12	630	630	435	250	500								40	11	11		
BP21-525800-0800-12	800	800	525	320	640	115	50	45	Ø12	M12	50	75	15	14	240	6	477
BP21-220300-0300-16	300	300	220	100	250	90	40	30	Ø16	M16	50	75	5	4	30	6	46
BP21-280400-0400-16	400	400	280	160	320								7	6	56		
BP21-340500-0500-16	500	500	340	200	400	90	50	35	Ø16	M16	50	75	9	8	90	6	170
BP21-435630-0630-16	630	630	435	250	500								40	11	11		
BP21-525800-0800-16	800	800	525	320	640	115	50	45	Ø16	M16	50	75	15	14	240	6	470

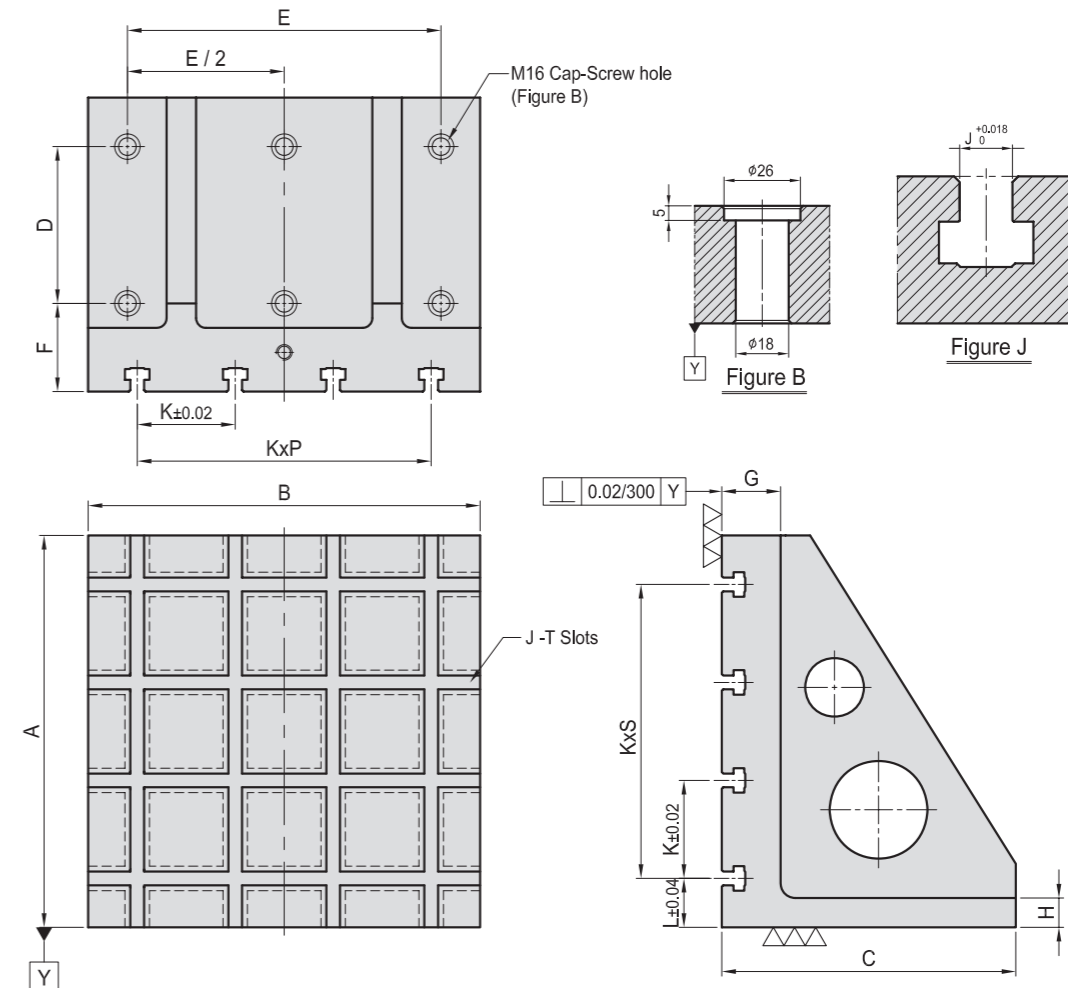
*Special Design Welcome !



BP22

M/C ANGLE PLATE

- Material: Cast Iron FC300(JIS) / GG30(DIN)
- Heat treated (Normalized)
- Application: HMC / VMC.
- Features: T-Slots running in 2 directions, easily adapts to standardized jig components.



MODEL NO.	A	B	C	D	E	F	G	H	J	K	L	P	S	Mounting holes	kg
BP22-220300-0300-14	300	300	220	100	250	90	60	30	14	100	50	2	2	6	53
BP22-300400-0400-14	400	400	300	160	320							3	3		
BP22-350500-0500-14	500	500	350	200	400	90	60	35	14	100	50	4	4	6	170
BP22-450630-0630-14	630	630	450	250	500							100	65		
BP22-550800-0800-14	800	800	550	320	640	115	75	45	14	150	100	4	4	6	566
BP22-220300-0300-18	300	300	220	100	250	90	60	30	18	100	50	2	2	6	51
BP22-300400-0400-18	400	400	300	160	320							3	3		
BP22-350500-0500-18	500	500	350	200	400	90	60	35	18	100	50	4	4	6	162
BP22-450630-0630-18	630	630	450	250	500							100	65		
BP22-550800-0800-18	800	800	550	320	640	115	75	45	18	150	100	4	4	6	555

*Special Design Welcome !

BP

BPA

BC

CP

SU

PT

SVF

ALV

OK-
VISE

OTHER

Column
for
Technical
Data



BP23

MC NARROW ANGLE PLATE

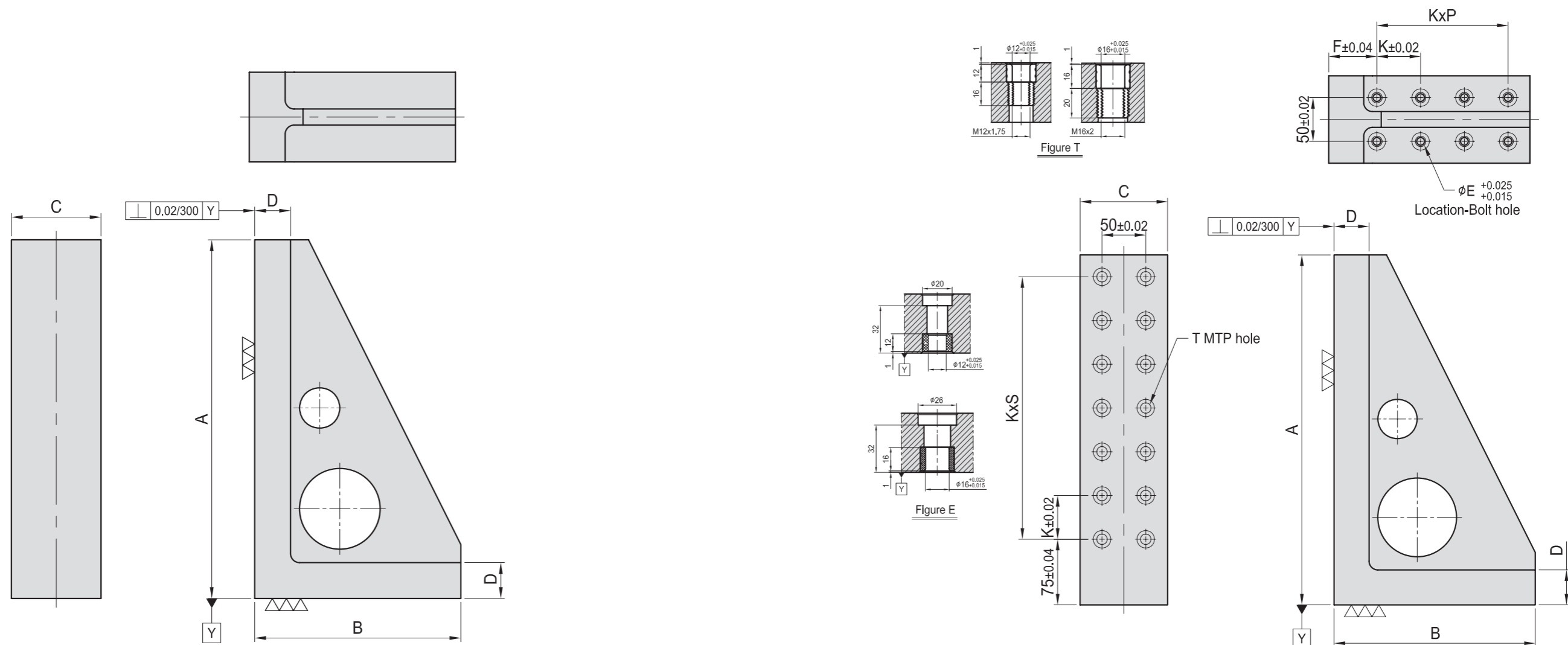
- Material: Cast Iron FC300(JIS) / GG30(DIN)
- Heat treated (Normalized)
- Application: HMC / VMC.
- Features: Ready to accept a hole pattern for your special jig.



BP24

MC NARROW ANGLE PLATE

- Material: Cast Iron FC300(JIS) / GG30(DIN)
- Heat treated (Normalized)
- Alignment Bushing: SUJ2(JIS) / 100Cr6(DIN), heat treated
- Threaded Insert: S45C(JIS) / CK45(DIN), heat treated
- MTP hole spacing: 50 ± 0.02
- Application: HMC / VMC.
- Features: Alignment bushing & thread insert at every hole location, easily adapts to standardized jig components.



MODEL NO.	A	B	C	D	kg
BP23-180100-0300	300	180	100	40	14
BP23-230100-0400	400	230	100	40	20
BP23-280100-0500	500	280	100	40	25

*Special Design Welcome !

MODEL NO.	A	B	C	D	E	F	K	P	S	T	MTP	Mounting holes	kg	
BP24-180100-0300-12	300	180						2	4			10	6	12
BP24-230100-0400-12	400	230	100	40	12	55	50	3	6	Ø12	M12	14	8	19
BP24-280100-0500-12	500	280						4	8			18	10	23
BP24-180100-0300-16	300	180						2	4			10	6	13
BP24-230100-0400-16	400	230	100	40	16	55	50	3	6	Ø16	M16	14	8	20
BP24-280100-0500-16	500	280						4	8			18	10	24

*Special Design Welcome !

BP

BPA

BC

CP

SU

PT

SVF

ALV

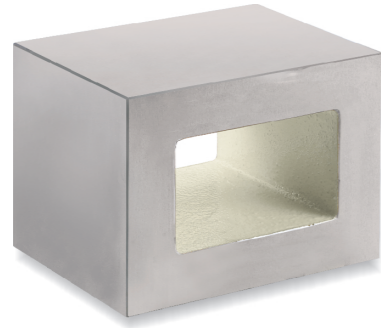
OK-
VISE

OTHER

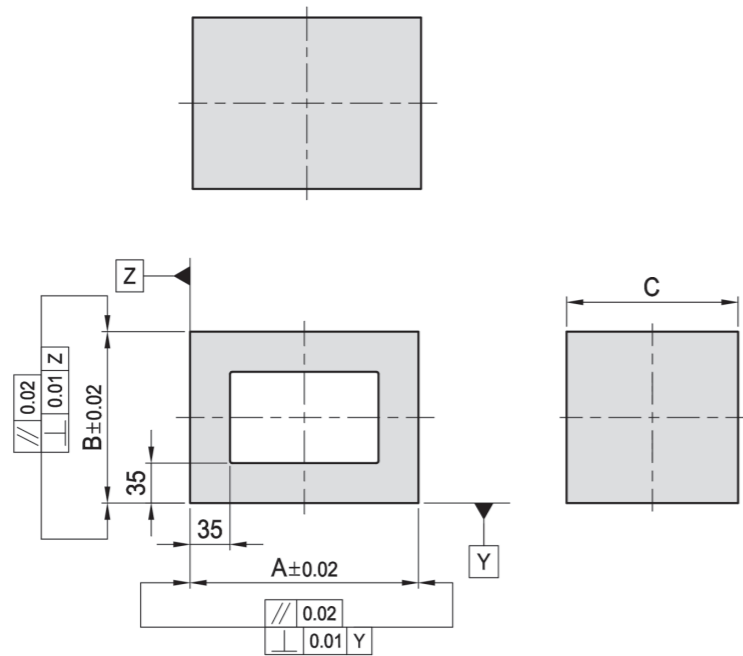
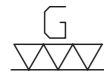
Column
for
Technical
Data

BP25

RECTANGULAR CAST SECTION



- Material: Cast Iron FC300(JIS) / GG30(DIN)
- Heat treated (Normalized)
- Application: Cast sections provide a fast & economical way to make special jig components.
- Features: Ready to accept a hole pattern for your special jig.



MODEL NO.	A	B	C	kg
BP25-200150-0150	200	150	150	23
BP25-250150-0200	250	200	150	30
BP25-300200-0250	300	250	200	56

*Special Design Welcome !

BP26

RECTANGULAR CAST SECTION



- Material: Cast Iron FC300(JIS) / GG30(DIN)
- Heat treated (Normalized)
- Alignment Bushing: SUJ2(JIS) / 100Cr6(DIN), heat treated
- Threaded Insert: S45C(JIS) / CK45(DIN), heat treated
- MTP hole spacing: 50 ± 0.02
- Application: Cast sections provide a fast & economical way to make special jig components.
- Features: Alignment bushing & thread insert at every hole location, easily adapts to standardized jig components.

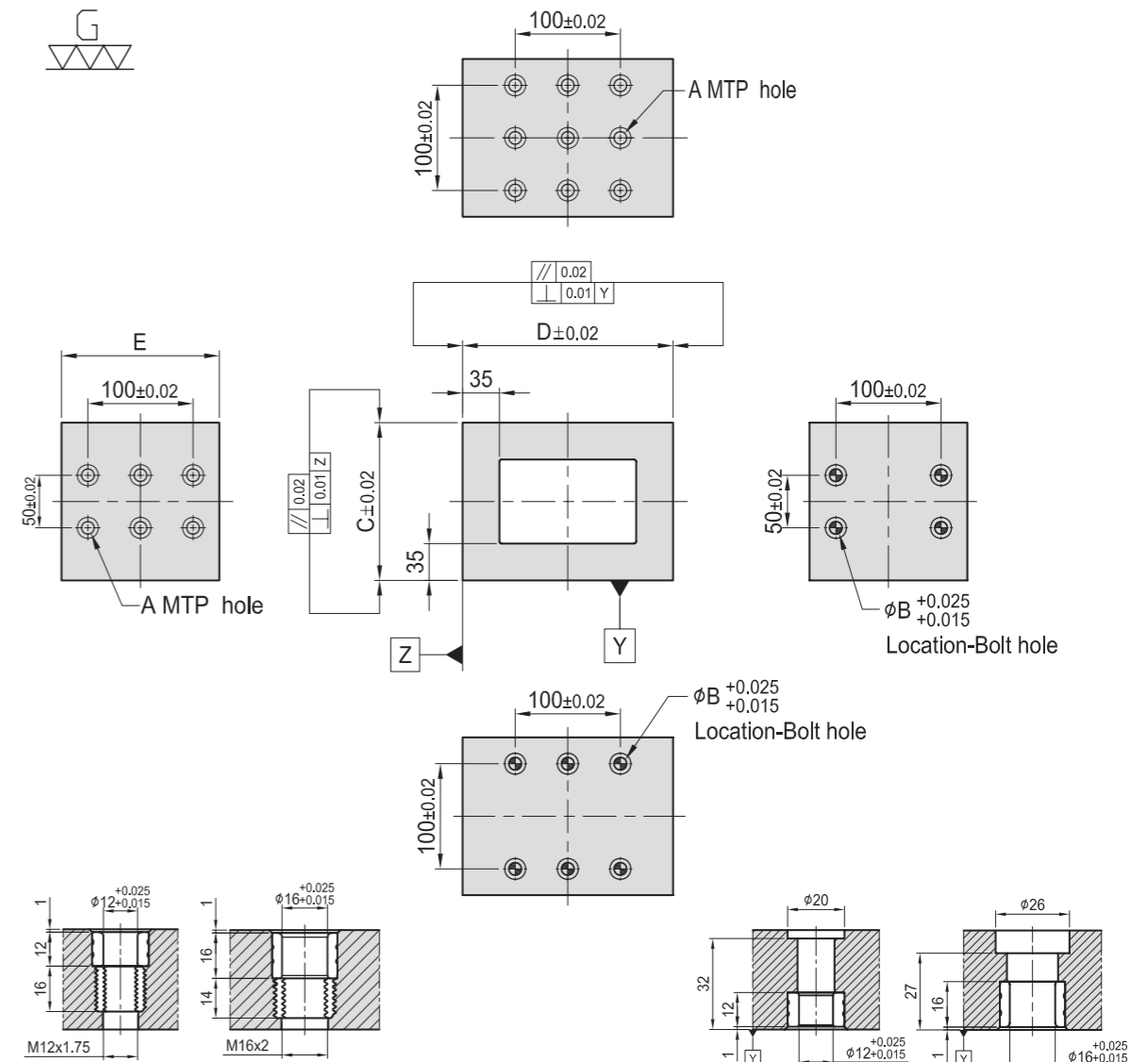


Figure A

Figure B

MODEL NO.	A	B	C	D	E	MTP	Mounting holes	kg
BP26-200150-0150-12	Ø12	M12	12	150	150	15	10	23
200								
BP26-250150-0200-12	Ø12	M12	12	150	150	15	10	23
200								
BP26-200150-0150-16	Ø16	M16	16	150	150	15	10	29
200								
BP26-250150-0200-16	Ø16	M16	16	150	150	15	10	30
200								

*Special Design Welcome !

BP

BPA

BC

CP

SU

PT

SVF

ALV

OK-
VISE

OTHER

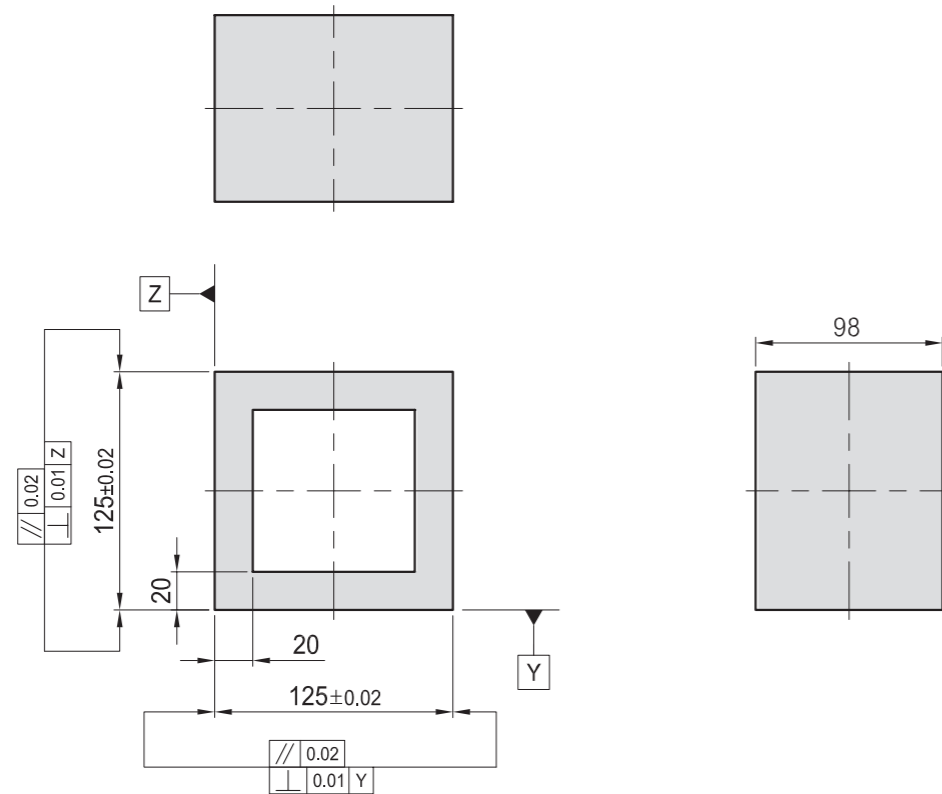
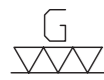
Column
for
Technical
Data

BP27

RECTANGULAR CAST SECTION



- Material: Cast Iron FC300(JIS) / GG30(DIN)
- Heat treated (Normalized)
- Application: Cast sections provide a fast & economical way to make special jig components.
- Features: Ready to accept a hole pattern for your special jig.

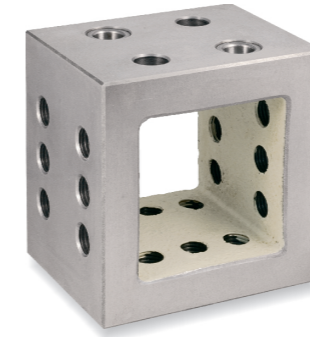


MODEL NO.	kg
BP27-125098-125	6

*Special Design Welcome !

BP28

RECTANGULAR CAST SECTION



- Material: Cast Iron FC300(JIS) / GG30(DIN)
- Heat treated (Normalized)
- Application: Cast sections provide a fast & economical way to make special jig components.
- Features: Alignment bushing & thread insert at every hole location, easily adapts to standardized jig components.

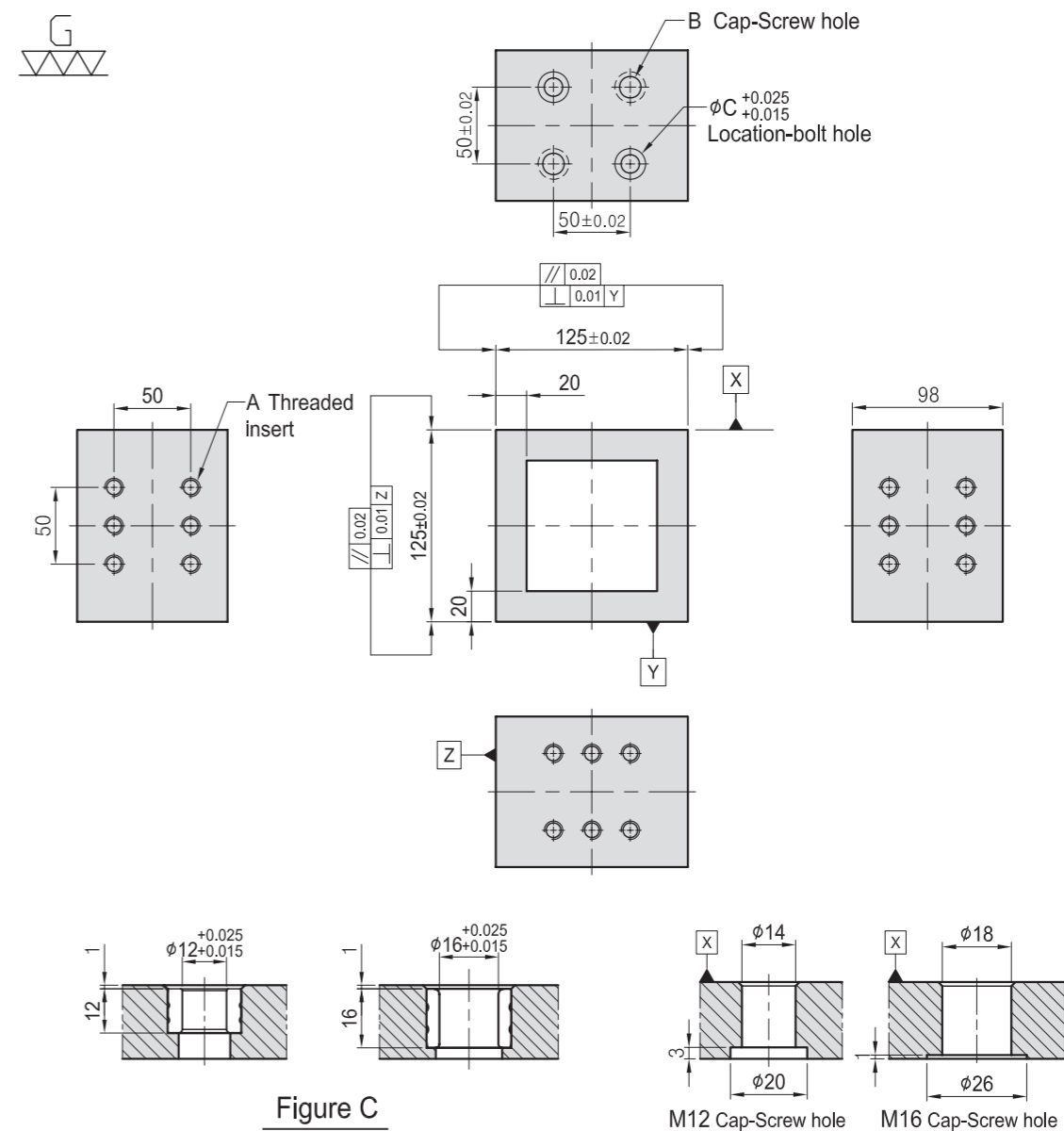
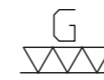


Figure C

M12 Cap-Screw hole M16 Cap-Screw hole

Figure B

MODEL NO.	A	B	C	kg
BP28-125098-125-12	M12	M12	12	5.8
BP28-125098-125-16	M16	M16	16	5.5

*Special Design Welcome !

BP

BPA

BC

CP

SU

PT

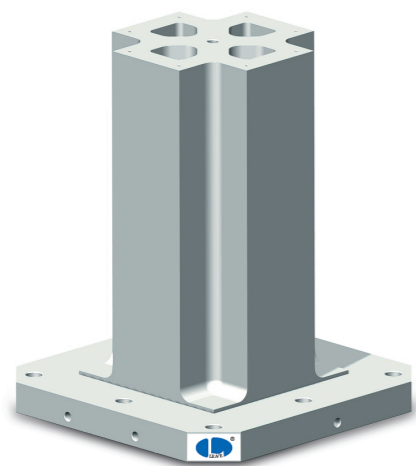
SVF

ALV

OK-
VISE

OTHER

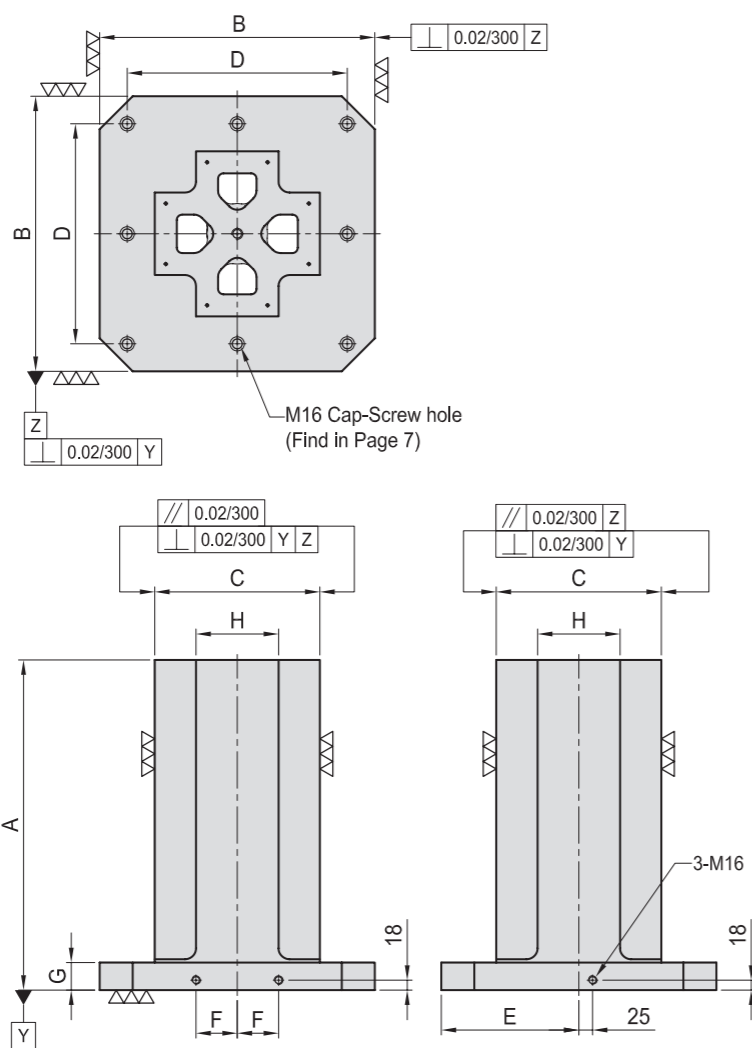
Column
for
Technical
Data



BP29

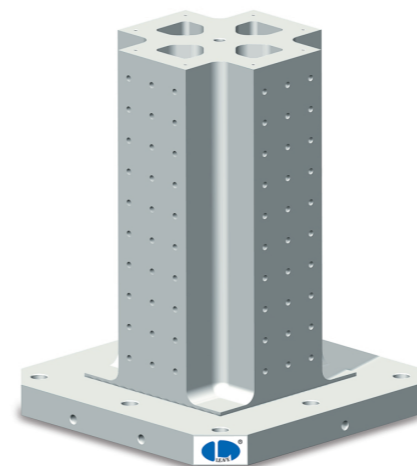
CROSS TOOLING COLUMN

- Material: Cast Iron FC300(JIS) / GG30(DIN)
- Heat treated (Normalized)
- Application: Horizontal Machining Center.
- Features: Ready to accept a hole pattern for your special jig.
- Eye bolt & top cover included.



MODEL NO.	A	B	C	D	E	F	G	H	Mounting holes	kg
BP29-400400-0500	500	400	250	320	200	55	50	125	4	154
BP29-400400-0650	650	400	250	320	200	55	50	125	4	188
BP29-500500-0600	600	500	300	400	250	75	50	150	8	244
BP29-500500-0750	750									287
BP29-630630-0700	700	630	350	500	315	100	50	200	8	373
BP29-630630-0850	850									424
BP29-800800-0800	800	800	500	640	400	135	50	300	8	648
BP29-800800-1000	1000									753

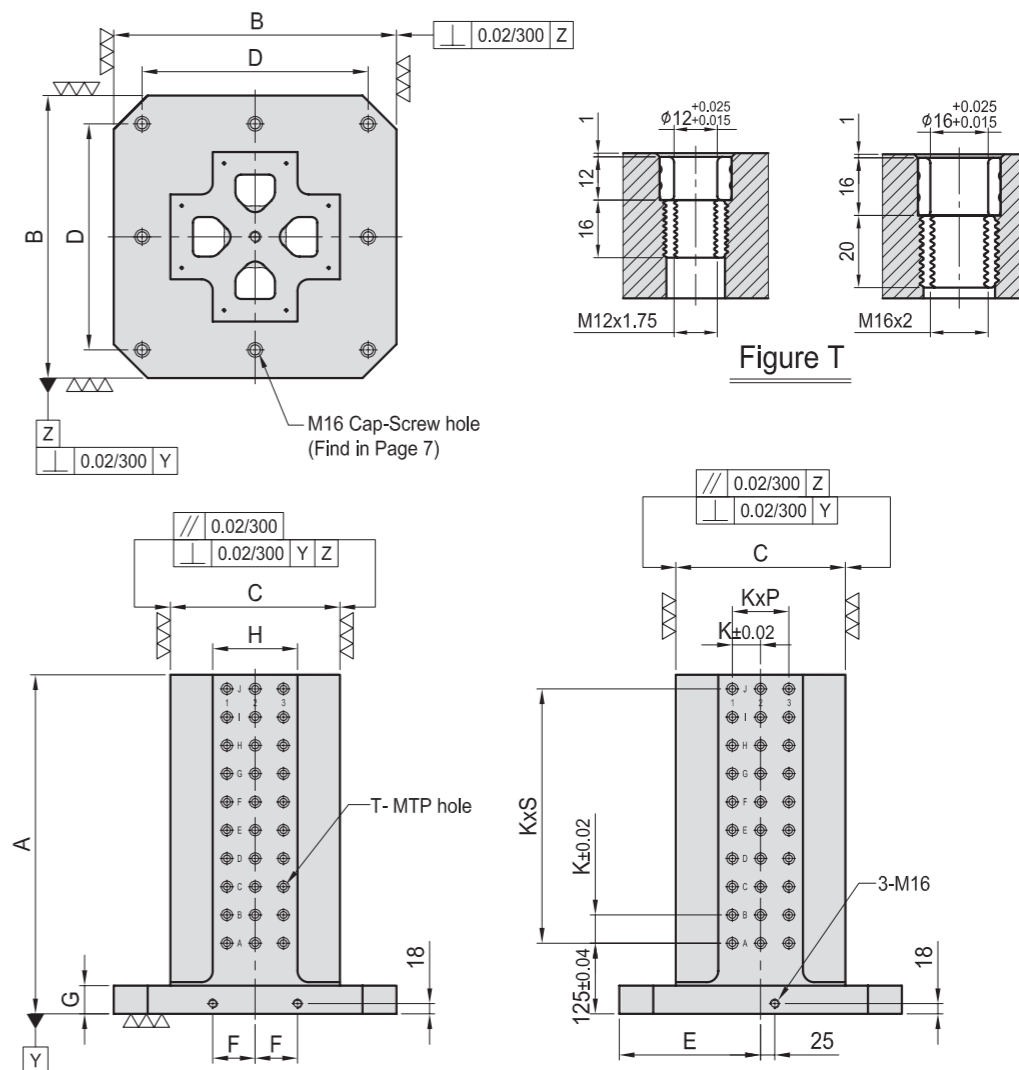
*Special Design Welcome!



BP30

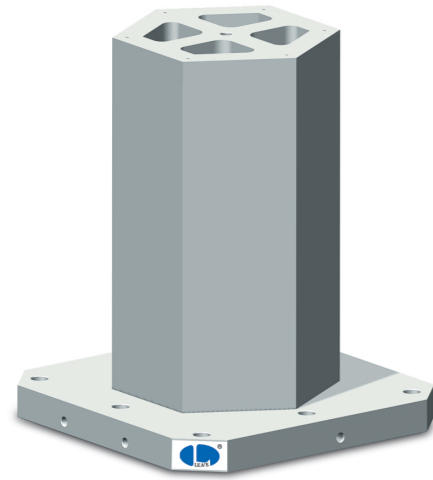
CROSS TOOLING COLUMN

- Material: Cast Iron FC300 (JIS) / GG30 (DIN)
- Heat treated (Normalized)
- Alignment bushing: SUJ2(JIS) / 100Cr6(DIN), heat treated
- Threaded Insert: S45C(JIS) / CK45(DIN), heat treated
- MTP hole spacing: 50 ± 0.02
- Application: Horizontal Machining Center.
- Features: Alignment bushing & thread insert at every hole location, easily adapts to standardized jig components.
- Eye bolt & top cover included.



MODEL NO.	A	B	C	D	E	F	G	H	K	P	S	T	MTP	Mounting holes	kg	MODEL NO.	A	B	C	D	E	F	G	H	K	P	S	T	MTP	Mounting holes	kg
BP30-400400-0500-12	500	400	250	320	200	55	50	125	50	1	7	Ø12	M12	64	152	BP30-400400-0500-16	500	400	250	320	200	55	50	125	50	1	7	Ø16	M16	64	151
BP30-400400-0650-12	650	400	250	320	200	55	50	125	50	1	10	Ø12	M12	88	186	BP30-400400-0650-16	650	400	250	320	200	55	50	125	50	1	10	Ø16	M16	88	184
BP30-500500-0600-12	600	500	300	400	250	75	50	150	50	2	9	Ø12	M12	120	250	BP30-500500-0600-16	600	500	300	400	250	75	50	150	50	2	9	Ø16	M16	120	247
BP30-500500-0750-12	750															293	BP30-500500-0750-16	750	500	300	400	250	75	50	150	50	2	12	156	156	
BP30-630630-0700-12	700	630	350	500	315	100	50	200	50	3	11	Ø12	M12	192	368	BP30-630630-0700-16	700	630	350	500	315	100	50	200	50	3	11	Ø16	M16	192	364
BP30-630630-0850-12	850															418	BP30-630630-0850-16	850	630	350	500	315	100	50	200	50	3	14	240	240	
BP30-800800-0800-12	800	800	500	640	400	135	50	300	50	5	13	Ø12	M12	336	640	BP30-800800-0800-16	800	800	500	640	400	135	50	300	50	5	13	Ø16	M16	336	633
BP30-800800-1000-12	1000															740	BP30-800800-1000-16	1000	800	500	640	400	135	50	300	50	5	17	432	432	

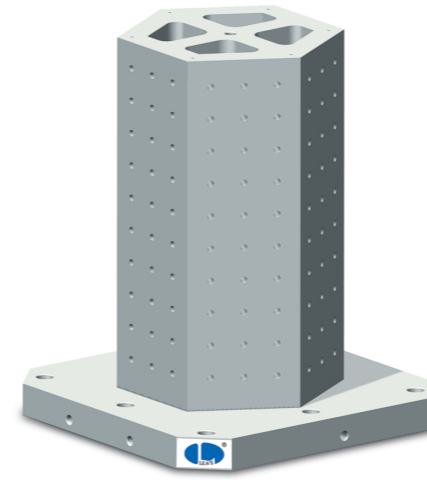
*Special Design Welcome!



BP31

HEXAGONAL CUBE

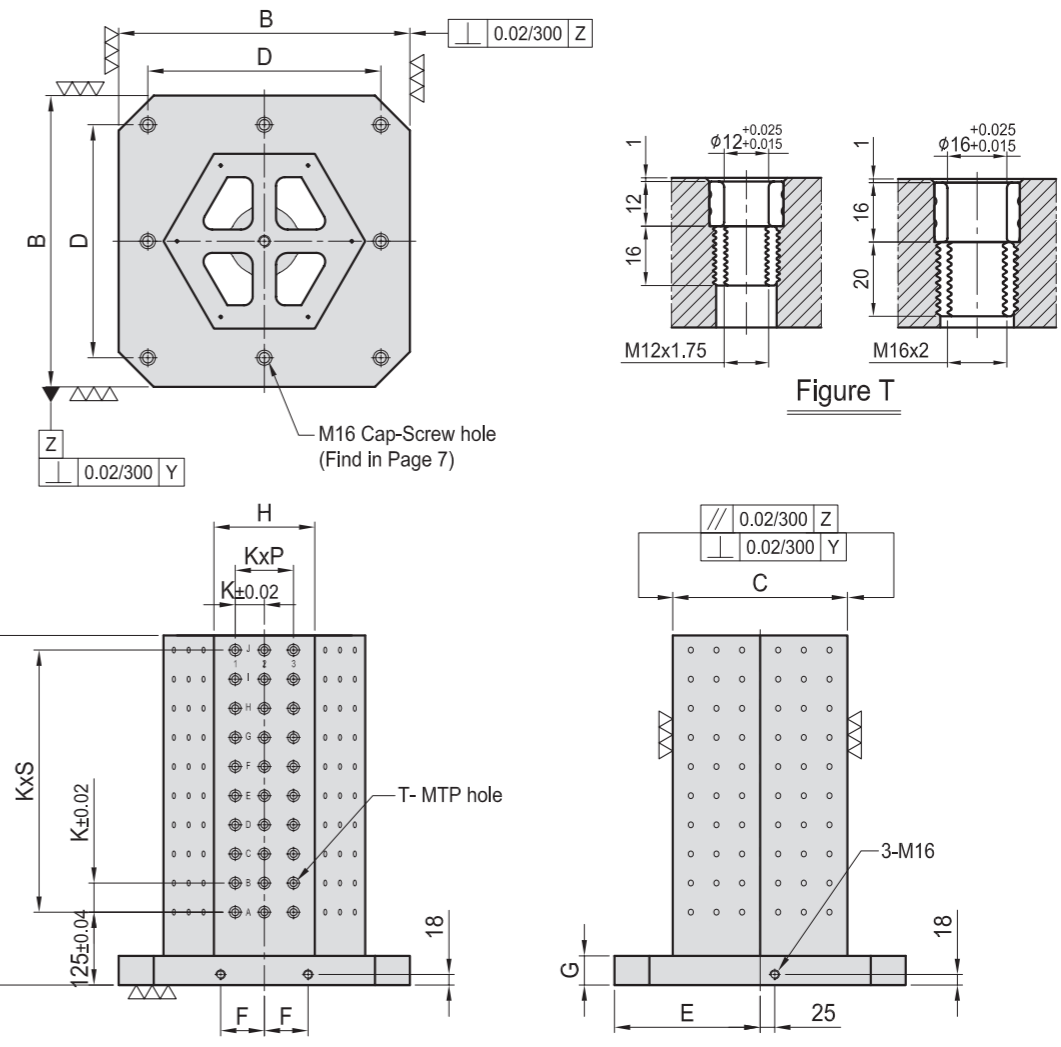
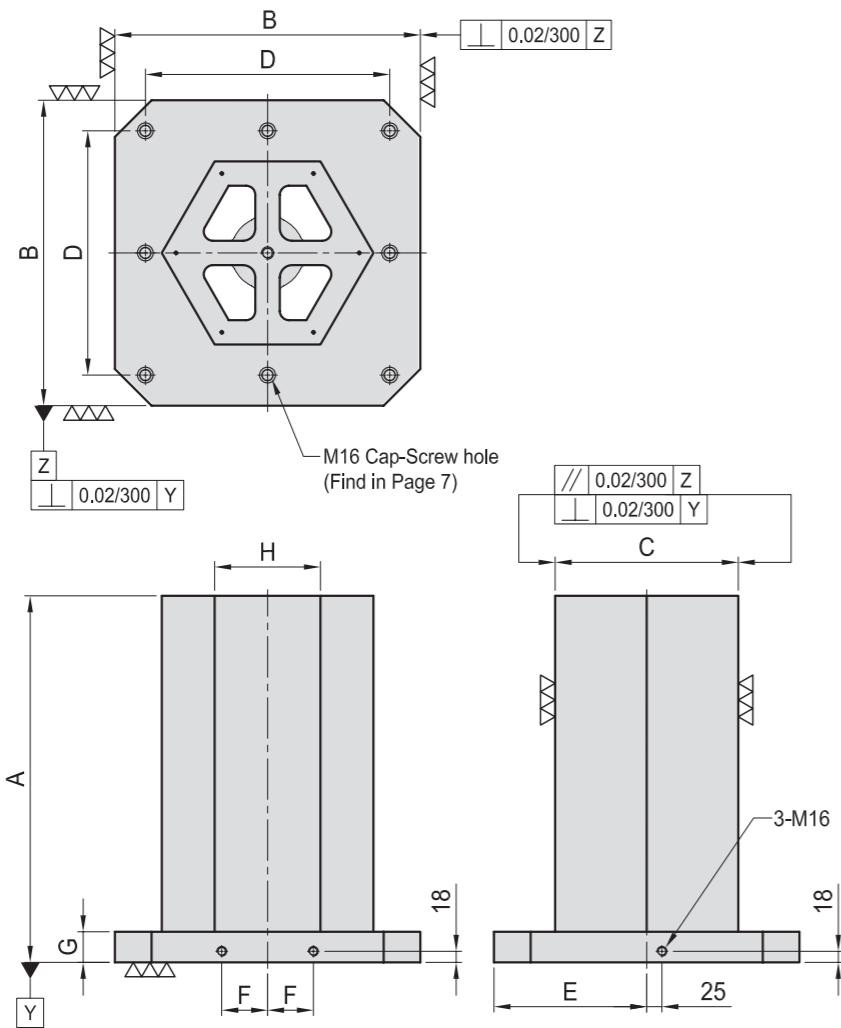
- Material: Cast Iron FC300(JIS) / GG30(DIN)
- Heat treated (Normalized)
- Application: Horizontal Machining Center.
- Features: Ready to accept a hole pattern for your special jig.
- Eye bolt & top cover included.



BP32

HEXAGONAL CUBE

- Material: Cast Iron FC300 (JIS) / GG30 (DIN)
- Heat treated (Normalized)
- Alignment bushing: SUJ2(JIS) / 100Cr6(DIN), heat treated
- Threaded Insert: S45C(JIS) / CK45(DIN), heat treated
- MTP hole spacing: 50 ± 0.02
- Application: Horizontal Machining Center.
- Features: Alignment bushing & thread insert at every hole location, easily adapts to standardized jig components.
- Eye bolt & top cover included.

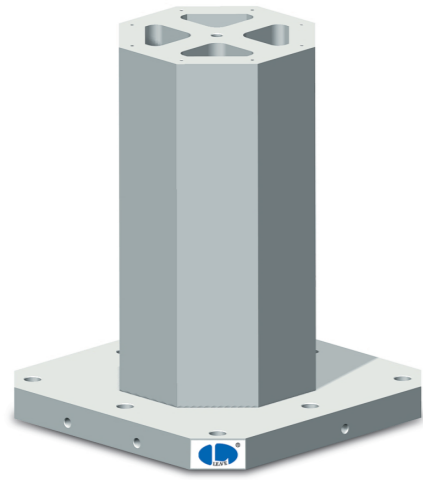


MODEL NO.	A	B	C	D	E	F	G	H	Mounting holes	kg
BP31-400400-0500	500									151
BP31-400400-0650	650	400	250	320	200	55	50	144	4	183
BP31-500500-0600	600									233
BP31-500500-0750	750	500	300	400	250	75	50	173	8	272
BP31-630630-0700	700									361
BP31-630630-0850	850	630	350	500	315	100	50	202	8	408
BP31-800800-0800	800									619
BP31-800800-1000	1000	800	500	640	400	135	50	289	8	713

*Special Design Welcome !

MODEL NO.	A	B	C	D	E	F	G	H	K	P	S	T	MTP	Mounting holes	kg	MODEL NO.	A	B	C	D	E	F	G	H	K	P	S	T	MTP	Mounting holes	kg	
BP32-400400-0500-12	500														149	BP32-400400-0500-16	500													147		
BP32-400400-0650-12	650	400	250	320	200	55	50	144	50	1	7	Ø12	M12	132	4	BP32-400400-0650-16	650	400	250	320	200	55	50	144	50	1	10	Ø16	M16	132	4	177
BP32-500500-0600-12	600														228	BP32-500500-0600-16	600													224		
BP32-500500-0750-12	750	500	300	400	250	75	50	173	50	2	9	Ø12	M12	234	8	BP32-500500-0750-16	750	500	300	400	250	75	50	173	50	2	12	Ø16	M16	234	8	262
BP32-630630-0700-12	700														356	BP32-630630-0700-16	700													351		
BP32-630630-0850-12	850	630	350	500	315	100	50	202	50	2	11	Ø12	M12	270	8	BP32-630630-0850-16	850	630	350	500	315	100	50	202	50	2	14	Ø16	M16	270	8	396
BP32-800800-0800-12	800														609	BP32-800800-0800-16	800													600		
BP32-800800-1000-12	1000	800	500	640	400	135	50	289	50	4	13	Ø12	M12	540	8	BP32-800800-1000-16	1000	800	500	640	400	135	50	289	50	4	17	Ø16	M16	540	8	688

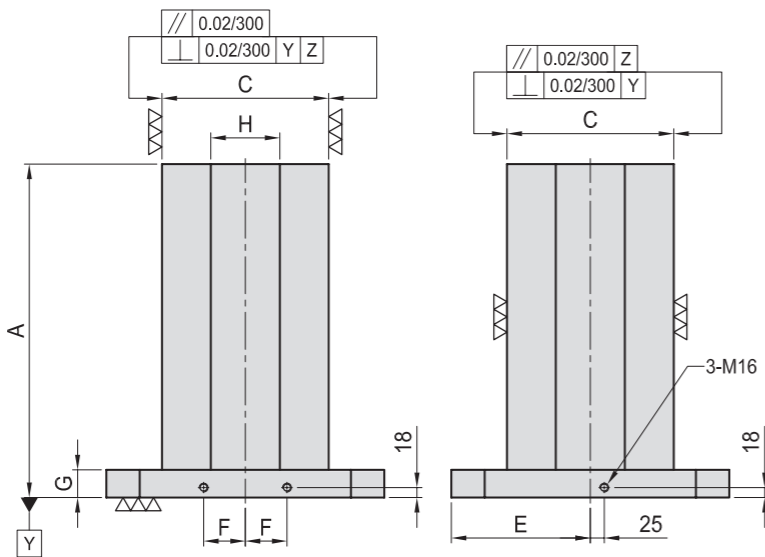
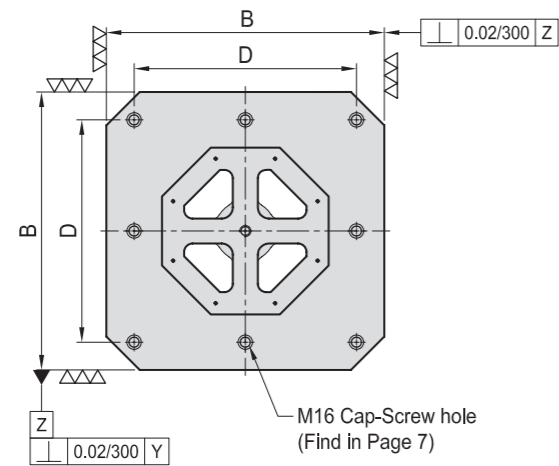
*Special Design Welcome !



BP33

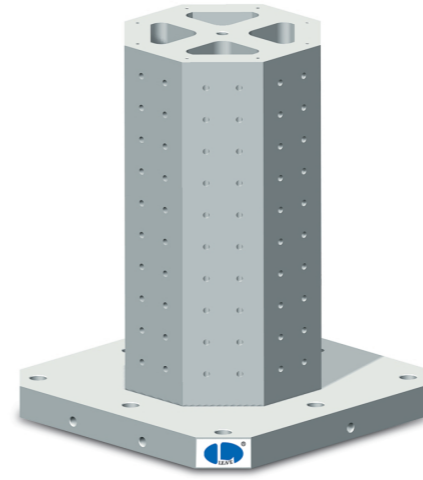
OCTAGONAL CUBE

- Material: Cast Iron FC300(JIS) / GG30(DIN)
- Heat treated (Normalized)
- Application: Horizontal Machining Center.
- Features: Ready to accept a hole pattern for your special jig.
- Eye bolt & top cover included.



MODEL NO.	A	B	C	D	E	F	G	H	Mounting holes	kg
BP33-400400-0500	500									148
BP33-400400-0650	650	400	250	320	200	55	50	103	4	179
BP33-500500-0600	600									227
BP33-500500-0750	750	500	300	400	250	75	50	124	8	264
BP33-630630-0700	700									350
BP33-630630-0850	850	630	350	500	315	100	50	145	8	395
BP33-800800-0800	800									622
BP33-800800-1000	1000	800	500	640	400	135	50	207	8	711

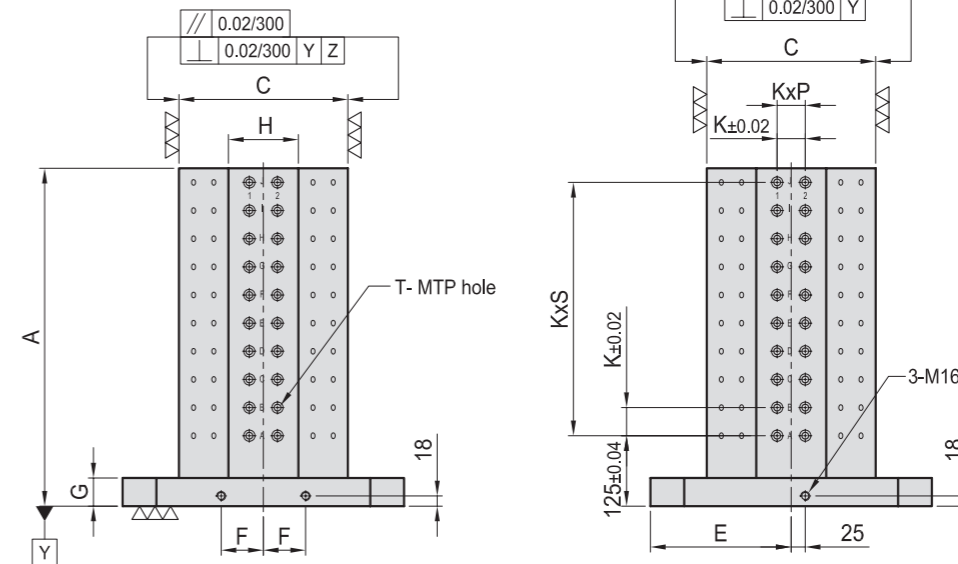
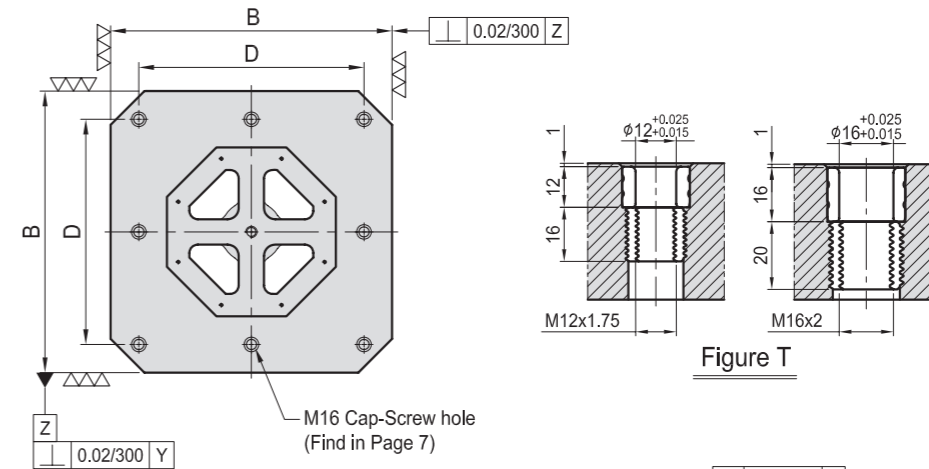
*Special Design Welcome !



BP34

OCTAGONAL CUBE

- Material: Cast Iron FC300 (JIS) / GG30 (DIN)
- Heat treated (Normalized)
- Alignment bushing: SUJ2(JIS) / 100Cr6(DIN), heat treated
- Threaded Insert: S45C(JIS) / CK45(DIN), heat treated
- MTP hole spacing: 50 ± 0.02
- Application: Horizontal Machining Center.
- Features: Alignment bushing & thread insert at every hole location, easily adapts to standardized jig components.
- Eye bolt & top cover included.



MODEL NO.	A	B	C	D	E	F	G	H	K	P	S	T	MTP	Mounting holes	kg	MODEL NO.	A	B	C	D	E	F	G	H	K	P	S	T	MTP	Mounting holes	kg	
BP34-400400-0500-12	500														145	BP34-400400-0500-16	500													142		
BP34-400400-0650-12	650	400	250	320	200	55	50	103	50	1	10	$\phi 12$	M12	176	4	BP34-400400-0650-16	650	400	250	320	200	55	50	103	50	1	10	$\phi 16$	M16	176	4	171
BP34-500500-0600-12	600														223	BP34-500500-0600-16	600													219		
BP34-500500-0750-12	750	500	300	400	250	75	50	124	50	1	12	$\phi 12$	M12	208	8	BP34-500500-0750-16	750	500	300	400	250	75	50	124	50	1	12	$\phi 16$	M16	208	8	255
BP34-630630-0700-12	700														345	BP34-630630-0700-16	700													341		
BP34-630630-0850-12	850	630	350	500	315	100	50	145	50	1	14	$\phi 12$	M12	240	8	BP34-630630-0850-16	850	630	350	500	315	100	50	145	50	1	14	$\phi 16$	M16	240	8	384
BP34-800800-0800-12	800														611	BP34-800800-0800-16	800													601		
BP34-800800-1000-12	1000	800	500	640	400	135	50	207	50	3	17	$\phi 12$	M12	576	8	BP34-800800-1000-16	1000	800	500	640	400	135	50	207	50	3	17	$\phi 16$	M16	576	8	685

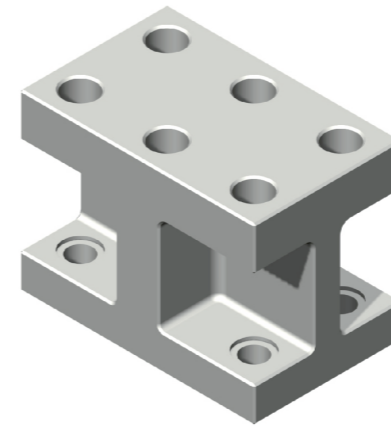
*Special Design Welcome !



BP35

H/CAST SECTION

- Material: Cast Iron FC300(JIS) / GG30(DIN)
- Heat treated (Normalized)
- Features: Easily adapts to standardized jig components.



BP36

H/CAST SECTION

- Material: Cast Iron FC300(JIS) / GG30(DIN)
- Heat treated (Normalized)
- Features: Easily adapts to standardized jig components.

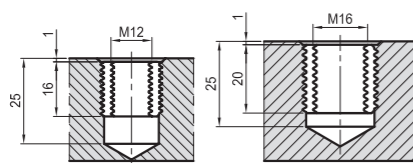
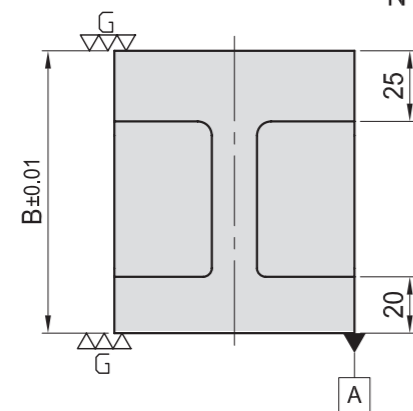
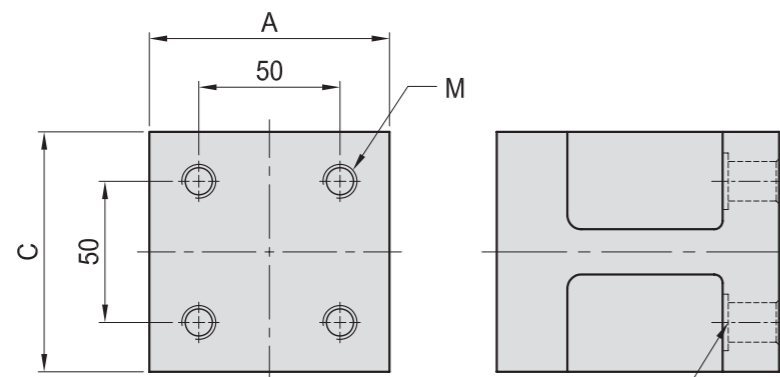


Figure M

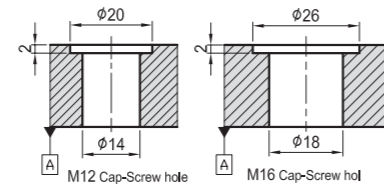


Figure N

MODEL NO.	A	B	C	M	N	kg
BP35-085085-0100-12	85	100	85	M12	M12	3.64
BP35-085085-0125-12		125				
BP35-085085-0100-16	85	100	85	M16	M16	4.13
BP35-085085-0125-16		125				

*Special Design Welcome !

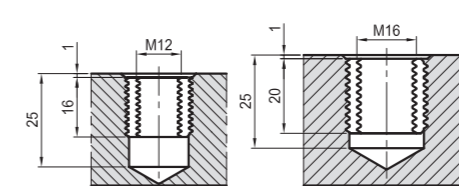
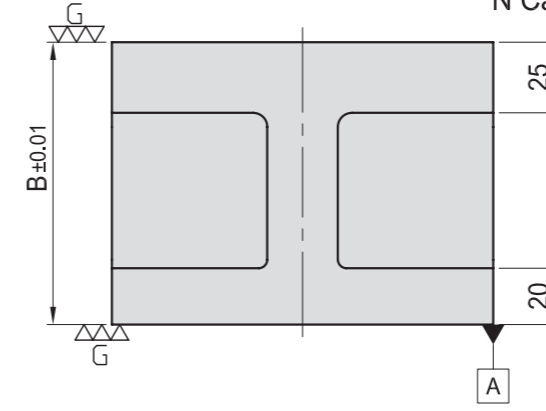
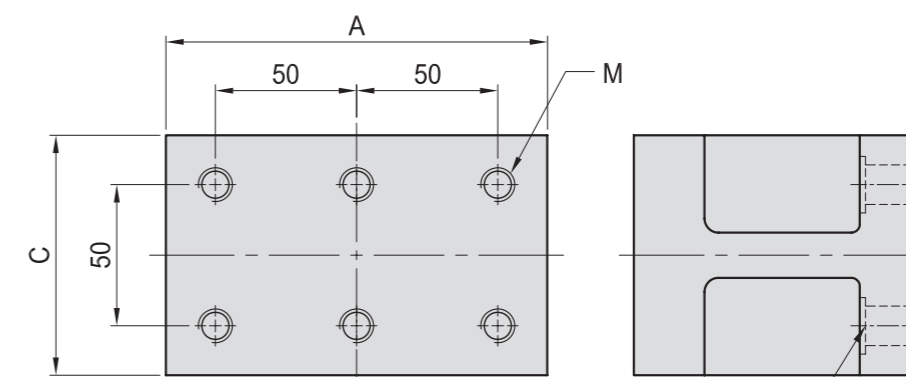


Figure M

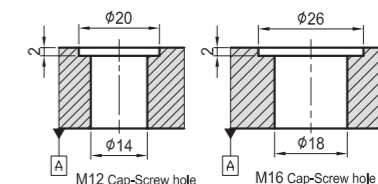


Figure N

MODEL NO.	A	B	C	M	N	kg
BP36-135085-0100-12	135	100	85	M12	M12	5.76
BP36-135085-0125-12		125				
BP36-135085-0100-16	135	100	85	M16	M16	6.53
BP36-135085-0125-16		125				

*Special Design Welcome !

BP

BPA

BC

CP

SU

PT

SVF

ALV

OK-
VISE

OTHER

Column
for
Technical
Data

BP37

H/CAST SECTION

- Material: Cast Iron FC300(JIS) / GG30(DIN)
- Heat treated (Normalized)
- Features: Easily adapts to standardized jig components.

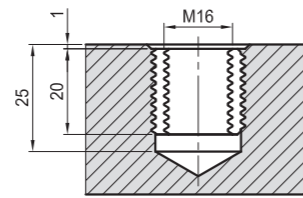
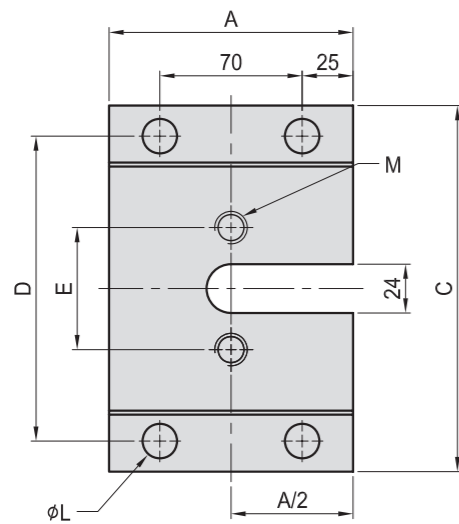
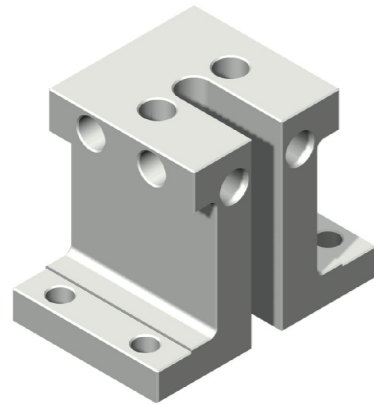
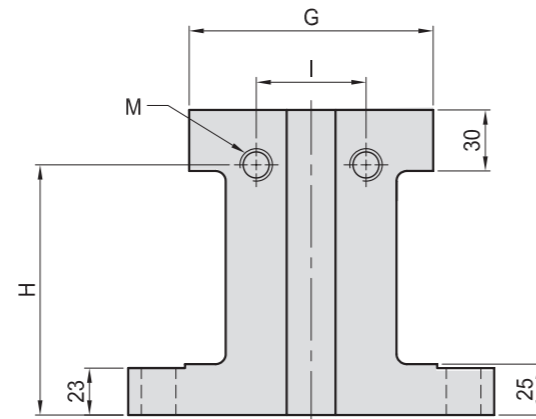
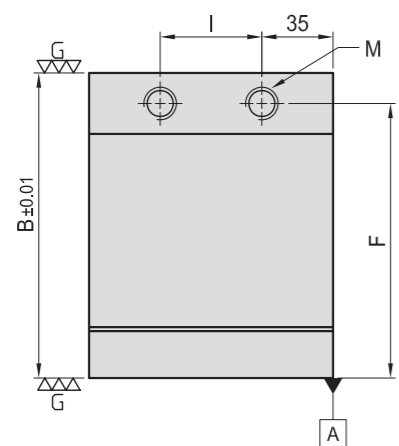


Figure M

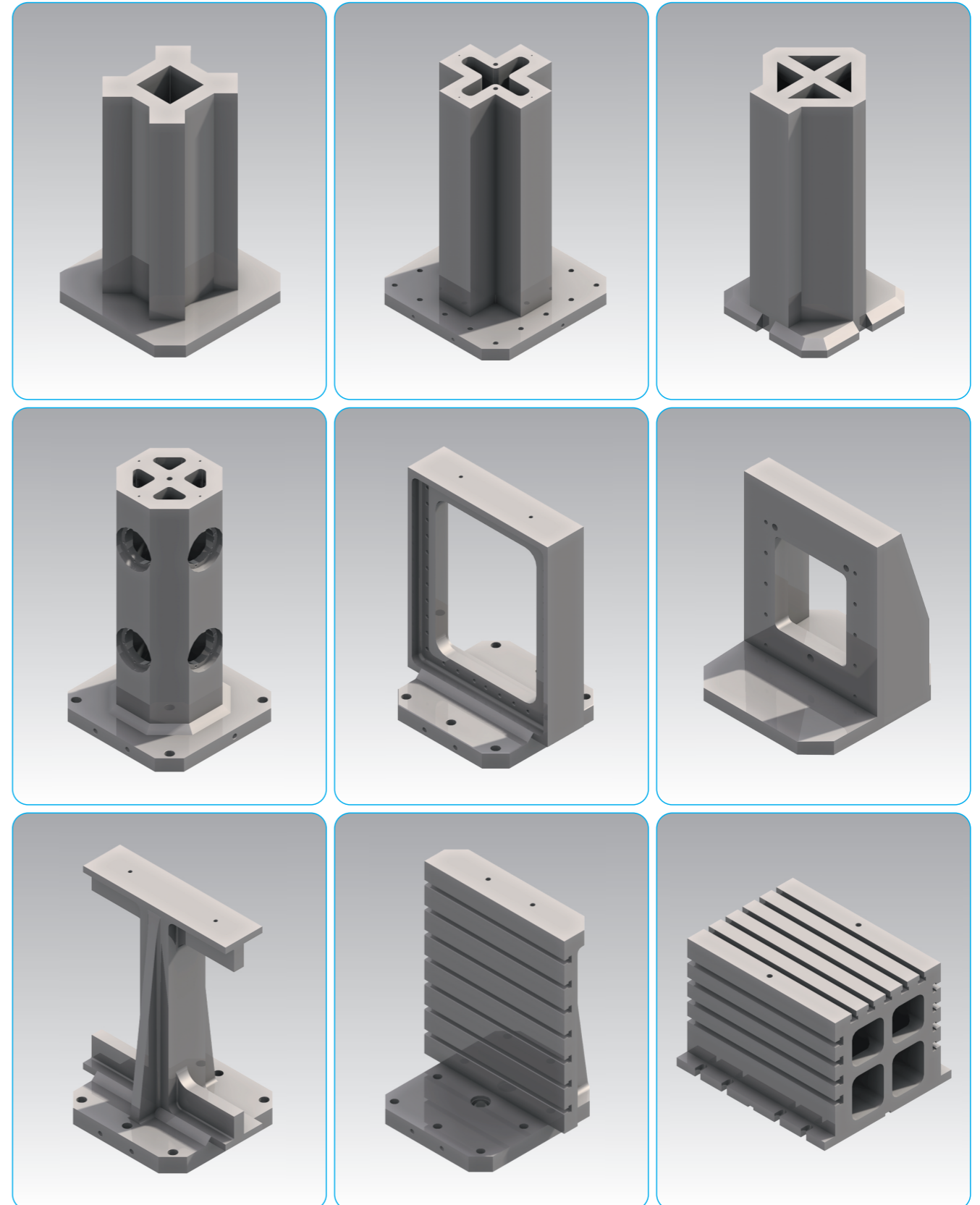


MODEL NO.	A	B	C	D	E	F	G	H	I	M	L	kg
BP37-120180-0150-16	120	150	180	150	60	135	120	123	50	M16	17	15.5

*Special Design Welcome !

BP-SPECIAL

**WE CAN BUILD YOUR OWN SPECIAL DESIGN
UP TO 1500mm x 1500mm x 1500mm**



BP

BPA

BC

CP

SU

PT

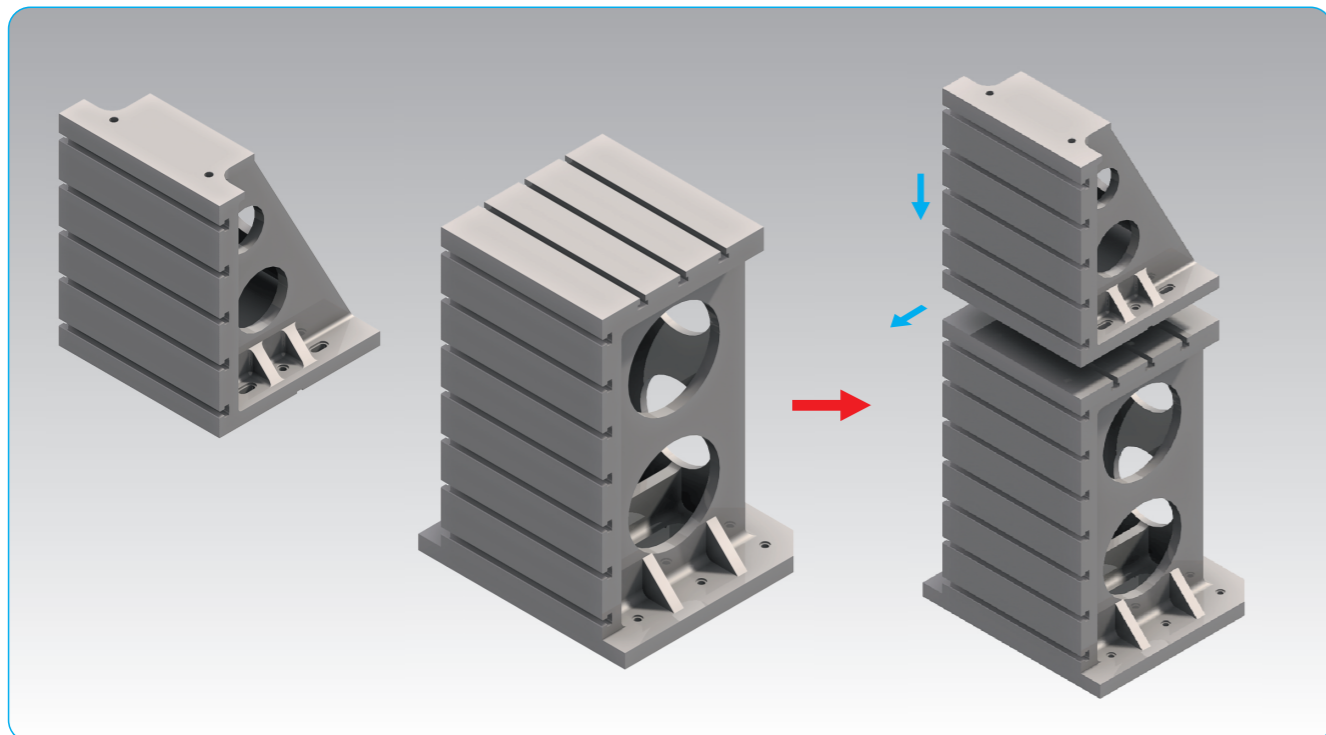
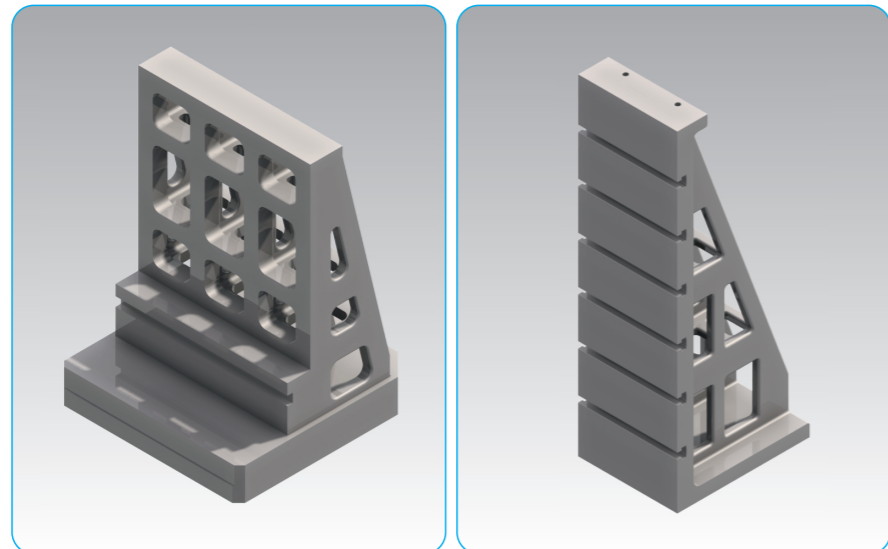
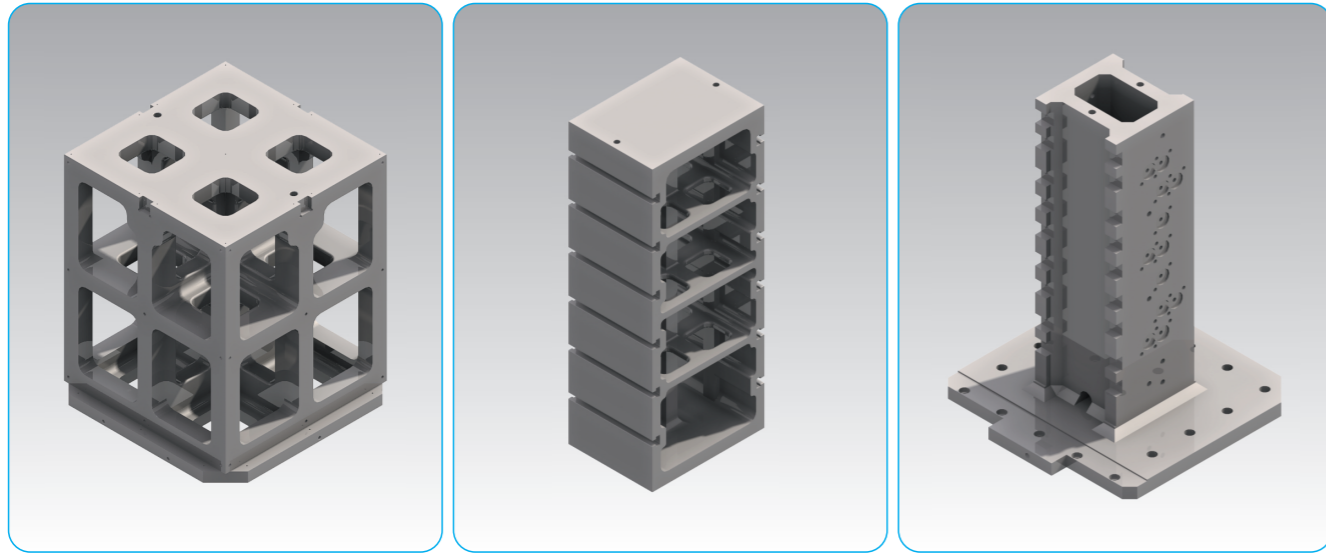
SVF

ALV

OK-
VISE

OTHER

Column
for
Technical
Data

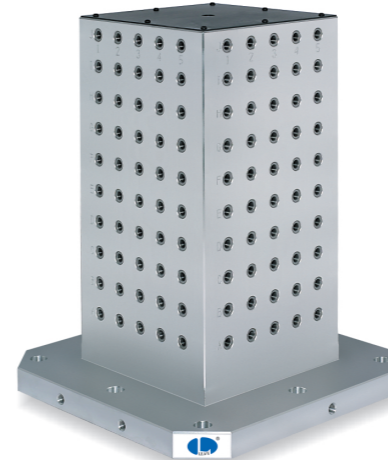




BPA07

SQUARE TOOLING COLUMN

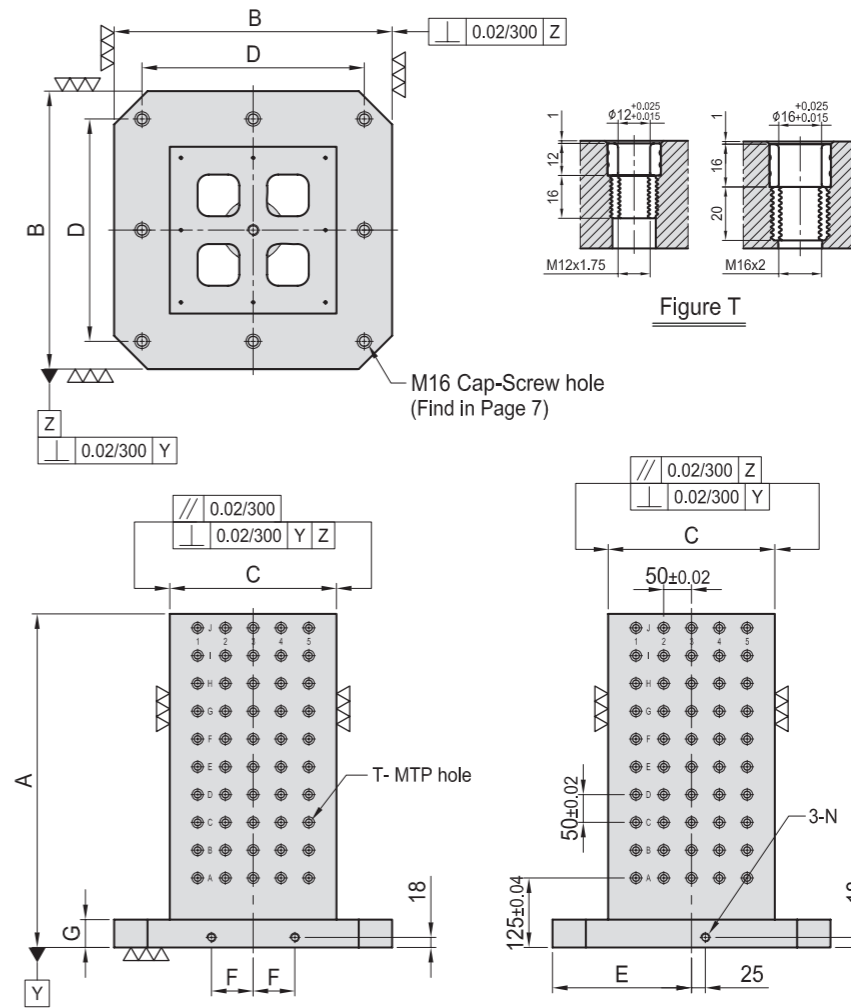
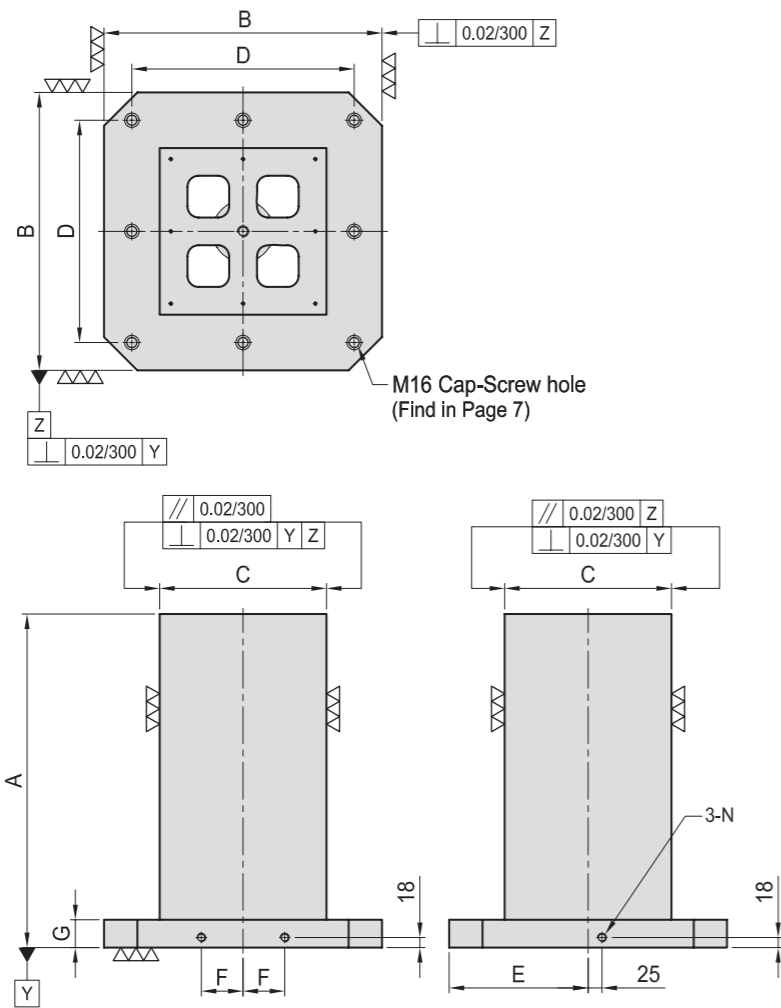
- Material: High Strength Aluminum Casting.
- Application: Horizontal Machining Center.
- Features: Ready to accept a hole pattern for your special jig.
- Eye bolt & Top cover included.



BPA08

SQUARE TOOLING COLUMN

- Material: High Strength Aluminum Casting.
- Alignment bushing: SUJ2(JIS) / 100Cr6(DIN), heat treated
- Threaded Insert: S45C(JIS) / CK45(DIN), heat treated
- MTP hole spacing: 50 ± 0.02
- Application: Horizontal Machining Center.
- Features: Alignment bushing & thread insert at every hole location, easily adapts to standardized jig components.
- Eye bolt & Top cover included.



MODEL NO.	A	B	C	D	E	F	G	Mounting holes	kg
BPA07-400400-0500	500								56
BPA07-400400-0650	650	400	250	320	200	55	40	4	73
BPA07-500500-0600	600	500	300	400	250	75	40	8	91
BPA07-500500-0750	750								122
BPA07-630630-0700	700	630	350	500	315	100	50	8	129
BPA07-630630-0850	850								180
BPA07-800800-0800	800	800	500	640	400	135	50	8	215
BPA07-800800-1000	1000								312

*Special Design Welcome !

MODEL NO.	A	B	C	D	E	F	G	T	MTP	Mounting holes	kg	MODEL NO.	A	B	C	D	E	F	G	T	MTP	Mounting holes	kg	
BPA08-400400-0500-12	500									128	54	BPA08-400400-0500-16	500								128	4	54	
BPA08-400400-0650-12	650	400	250	320	200	55	40	$\phi 12$	M12	176	73	BPA08-400400-0650-16	650	400	250	320	200	55	40	$\phi 16$	M16	176	4	73
BPA08-500500-0600-12	600	500	300	400	250	75	40	$\phi 12$	M12	200	88	BPA08-500500-0600-16	600	500	300	400	250	75	40	$\phi 16$	M16	200	8	88
BPA08-500500-0750-12	750									260	122	BPA08-500500-0750-16	750									260	122	
BPA08-630630-0700-12	700	630	350	500	315	100	50	$\phi 12$	M12	288	126	BPA08-630630-0700-16	700	630	350	500	315	100	50	$\phi 16$	M16	288	8	123
BPA08-630630-0850-12	850									360	180	BPA08-630630-0850-16	850									360	180	
BPA08-800800-0800-12	800	800	500	640	400	135	50	$\phi 12$	M12	504	204	BPA08-800800-0800-16	800	800	500	640	400	135	50	$\phi 16$	M16	504	8	201
BPA08-800800-1000-12	1000									648	312	BPA08-800800-1000-16	1000									648	312	

*Special Design Welcome !



BPA09

SQUARE TOOLING COLUMN

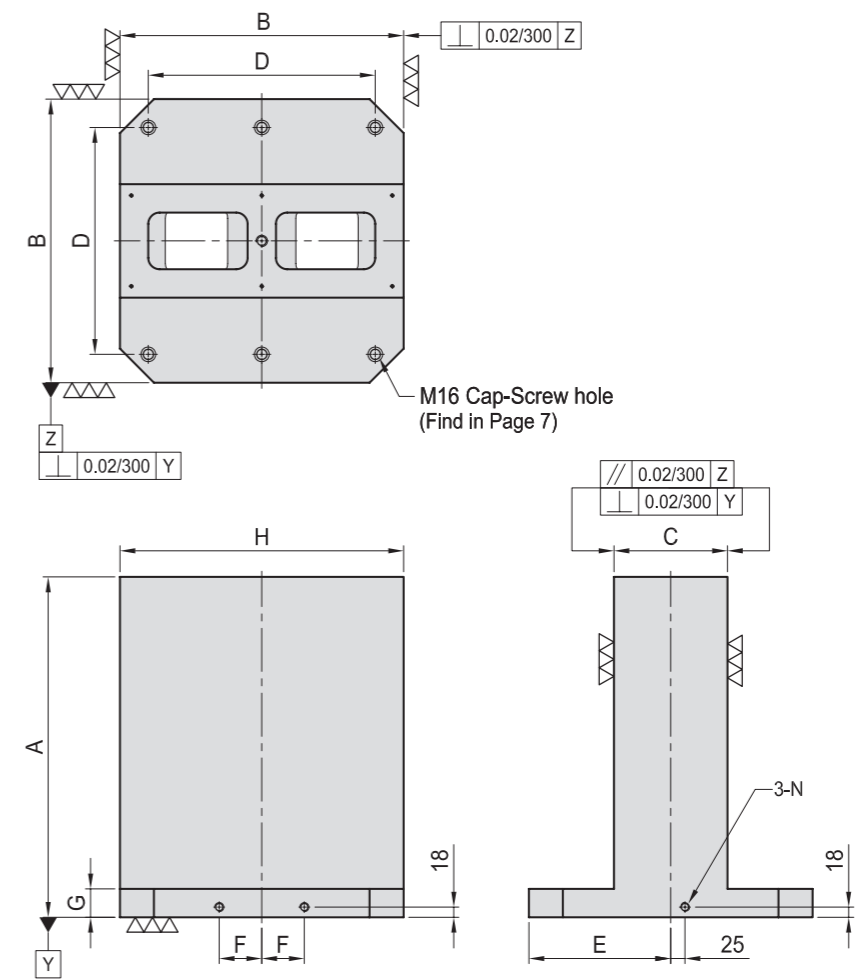
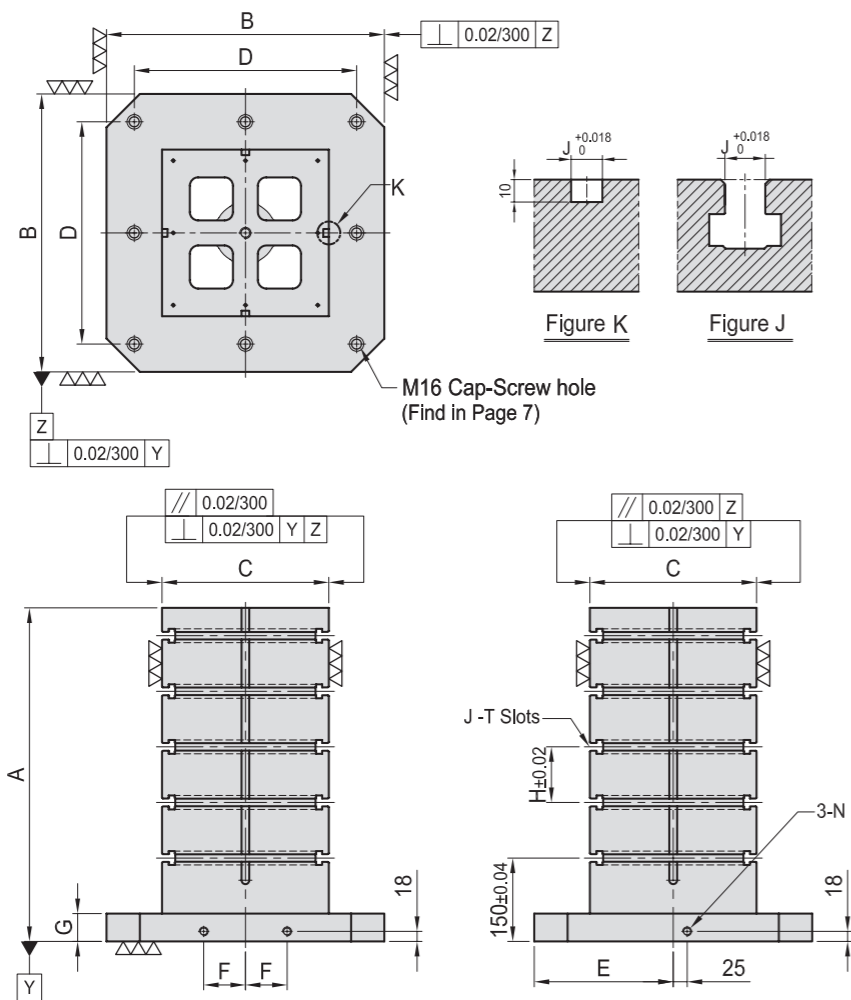
- Material: High Strength Aluminum Casting.
- Application: Horizontal Machining Center.
- Features: T-Slots running horizontally, key-way running vertically, easily adapts to standardized jig components.
- Eye bolt & Top cover included.



BPA10

DOUBLE SIDED TOOLING COLUMN

- Material: High Strength Aluminum Casting.
- Application: Horizontal Machining Center.
- Features: Ready to accept a hole pattern for your special jig.
- Eye bolt & Top cover included.



MODEL NO.	A	B	C	D	E	F	G	H	J	Mounting holes	kg
BPA09-400400-0500-14	500	400	250	320	200	55	40	100	14	4	61
BPA09-400400-0650-14	650	400	250	320	200	55	40	100	14	4	84
BPA09-500500-0600-14	600	500	300	400	250	75	40	100	14	8	86
BPA09-500500-0750-14	750	500	300	400	250	75	40	100	14	8	127
BPA09-630630-0700-14	700	630	350	500	315	100	50	125	14	8	136
BPA09-630630-0850-14	850	630	350	500	315	100	50	125	14	8	183
BPA09-800800-0800-14	800	800	500	640	400	135	50	150	14	8	260
BPA09-800800-1000-14	1000	800	500	640	400	135	50	150	14	8	319
BPA09-400400-0500-18	500	400	250	320	200	55	40	100	18	4	60
BPA09-400400-0650-18	650	400	250	320	200	55	40	100	18	4	84
BPA09-500500-0600-18	600	500	300	400	250	75	40	100	18	8	85
BPA09-500500-0750-18	750	500	300	400	250	75	40	100	18	8	135
BPA09-630630-0700-18	700	630	350	500	315	100	50	125	18	8	135
BPA09-630630-0850-18	850	630	350	500	315	100	50	125	18	8	183
BPA09-800800-0800-18	800	800	500	640	400	135	50	150	18	8	254
BPA09-800800-1000-18	1000	800	500	640	400	135	50	150	18	8	319

*Special Design Welcome !

MODEL NO.	A	B	C	D	E	F	G	H	Mounting holes	kg
BPA10-400400-0500	500	400	150	320	200	55	40	400	4	62
BPA10-400400-0650	650	400	150	320	200	55	40	400	4	86
BPA10-500500-0600	600	500	200	400	250	75	40	500	6	96
BPA10-500500-0750	750	500	200	400	250	75	40	500	6	135
BPA10-630630-0700	700	630	250	500	315	100	50	630	6	176
BPA10-630630-0850	850	630	250	500	315	100	50	630	6	202
BPA10-800800-0800	800	800	300	640	400	135	50	800	6	217
BPA10-800800-1000	1000	800	300	640	400	135	50	800	6	318

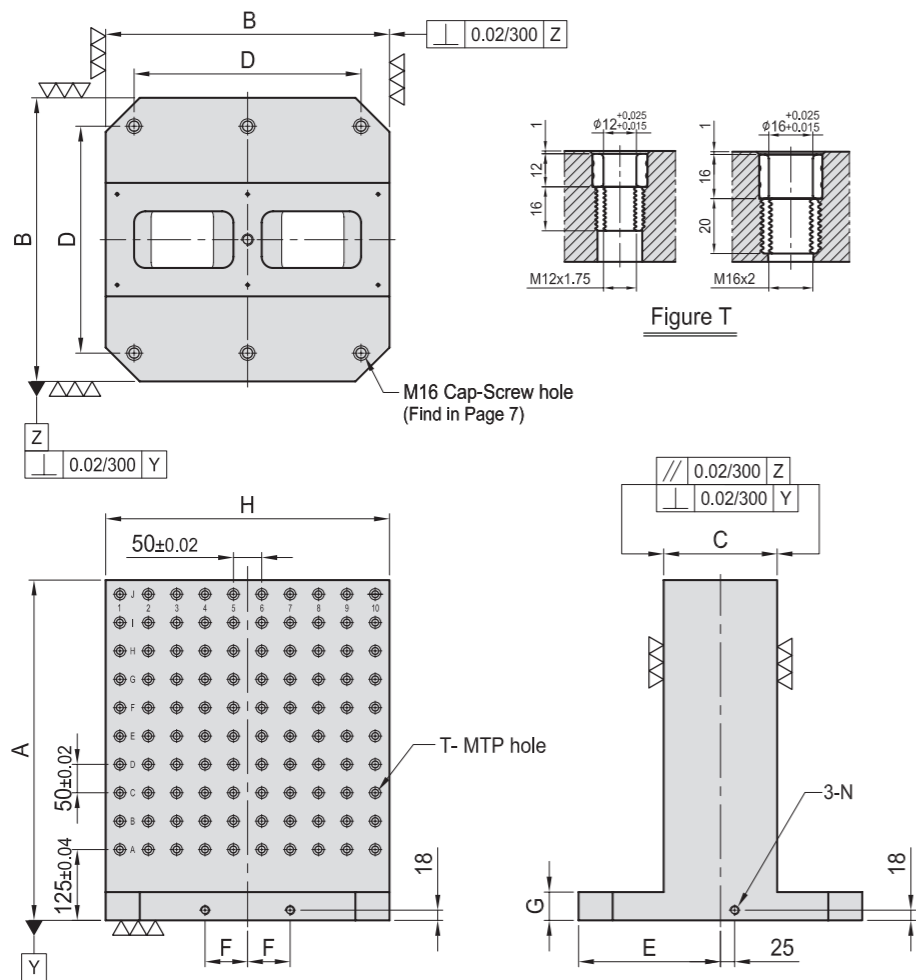
*Special Design Welcome !



BPA11

DOUBLE SIDED TOOLING COLUMN

- Material: High Strength Aluminum Casting.
- Alignment Bushing: SUJ2(JIS) / 100Cr6 (DIN), heat treated
- Threaded Insert: S45C(JIS) / CK45(DIN), heat treated
- MTP hole spacing: 50 ± 0.02
- Application: Horizontal Machining Center.
- Features: Alignment bushing & thread insert at every hole location, easily adapts to standardized jig components.
- Eye bolt & Top cover included.



MODEL NO.	A	B	C	D	E	F	G	H	T	MTP	Mounting holes	kg	MODEL NO.	A	B	C	D	E	F	G	H	T	MTP	Mounting holes	kg	
BPA11-400400-0500-12	500									128	4	56	BPA11-400400-0500-16	500	400	150	320	200	55	40	400	Ø12	M12	128	4	60
BPA11-400400-0650-12	650									176	4	86	BPA11-400400-0650-16	650	400	150	320	200	55	40	400	Ø16	M16	176	4	86
BPA11-500500-0600-12	600									200	6	91	BPA11-500500-0600-16	600	500	200	400	250	75	40	500	Ø16	M16	200	6	103
BPA11-500500-0750-12	750									260	6	135	BPA11-500500-0750-16	750	500	200	400	250	75	40	500	Ø16	M16	260	6	135
BPA11-630630-0700-12	700									288	6	154	BPA11-630630-0700-16	700	630	250	500	315	100	50	630	Ø16	M16	288	6	170
BPA11-630630-0850-12	850									360	6	202	BPA11-630630-0850-16	850	630	250	500	315	100	50	630	Ø16	M16	360	6	202
BPA11-800800-0800-12	800									420	6	214	BPA11-800800-0800-16	800	800	300	640	400	135	50	800	Ø16	M16	420	6	210
BPA11-800800-1000-12	1000									540	6	318	BPA11-800800-1000-16	1000	800	300	640	400	135	50	800	Ø16	M16	540	6	318

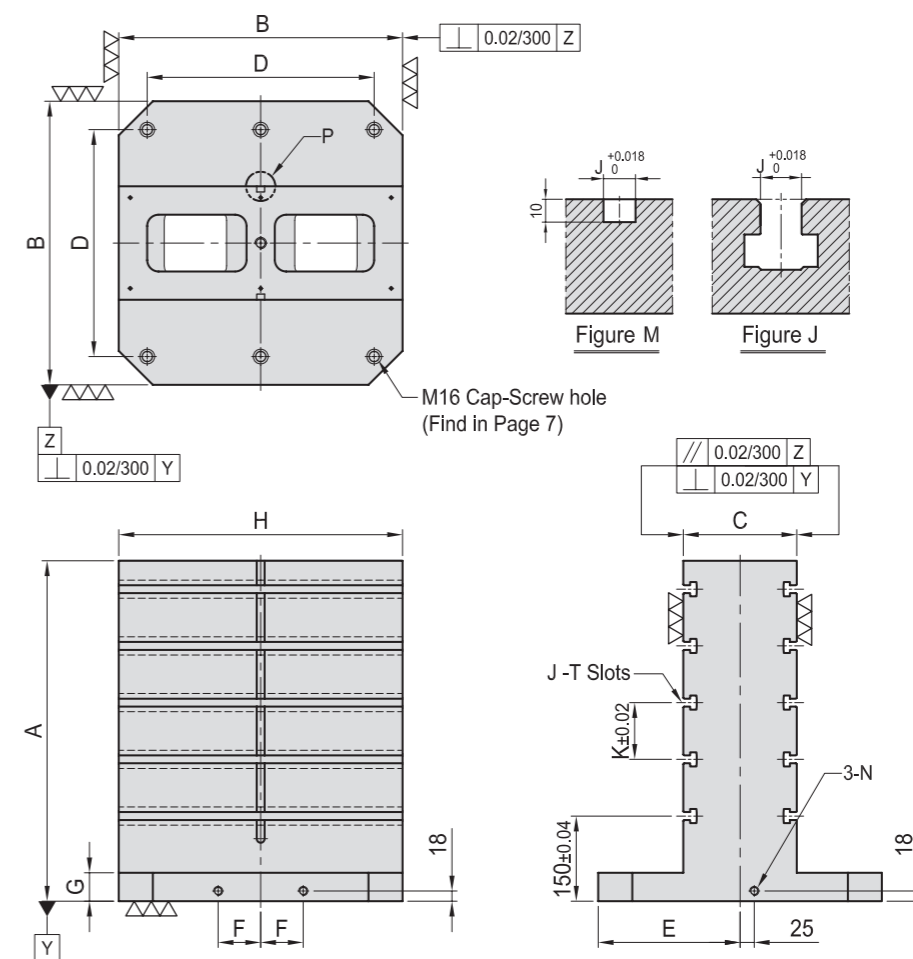
*Special Design Welcome !



BPA12

DOUBLE SIDED TOOLING COLUMN

- Material: High Strength Aluminum Casting.
- Application: Horizontal Machining Center.
- Features: T-Slots running horizontally, key-way running vertically, easily adapts to standardized jig components.
- Eye bolt & Top cover included.



MODEL NO.	A	B	C	D	E	F	G	H	J	K	Mounting holes	kg	MODEL NO.	A	B	C	D	E	F	G	H	J	K	Mounting holes	kg
BPA12-400400-0500-14	500										4	60	BPA12-400400-0500-18	500	400	150	320	200	55	40	400	18	100	4	60
BPA12-400400-0650-14	650										92	86	BPA12-400400-0650-18	650	400	150	320	200	55	40	400	18	100	4	86
BPA12-500500-0600-14	600										87	103	BPA12-500500-0600-18	600	500	200	400	250	75	40	500	18	100	6	86
BPA12-500500-0750-14	750										142	135	BPA12-500500-0750-18	750	500	200	400	250	75	40	500	18	100	6	142
BPA12-630630-0700-14	700										165	170	BPA12-630630-0700-18	700	630	250	500	315	100	50	630	18	125	6	163
BPA12-630630-0850-14	850										212	202	BPA12-630630-0850-18	850	630	250	500	315	100	50	630	18	125	6	212
BPA12-800800-0800-14	800										243	210	BPA12-800800-0800-18	800	800	300	640	400	135	50	800	18	150	6	240
BPA12-800800-1000-14	1000										325	318	BPA12-800800-1000-18	1000	800	300	640	400	135	50	800	18	150	6	325

*Special Design Welcome !



A series of horizontal blue lines spanning the width of the page, providing a ruled area for text or notes.