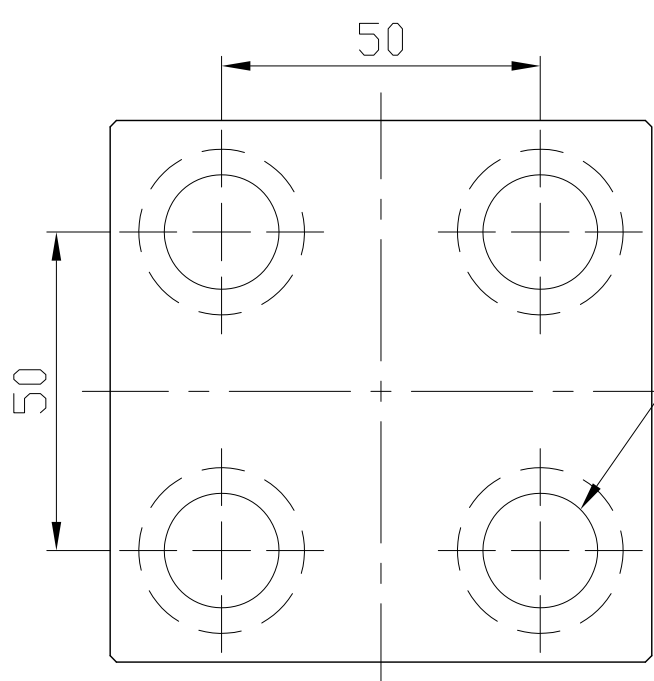
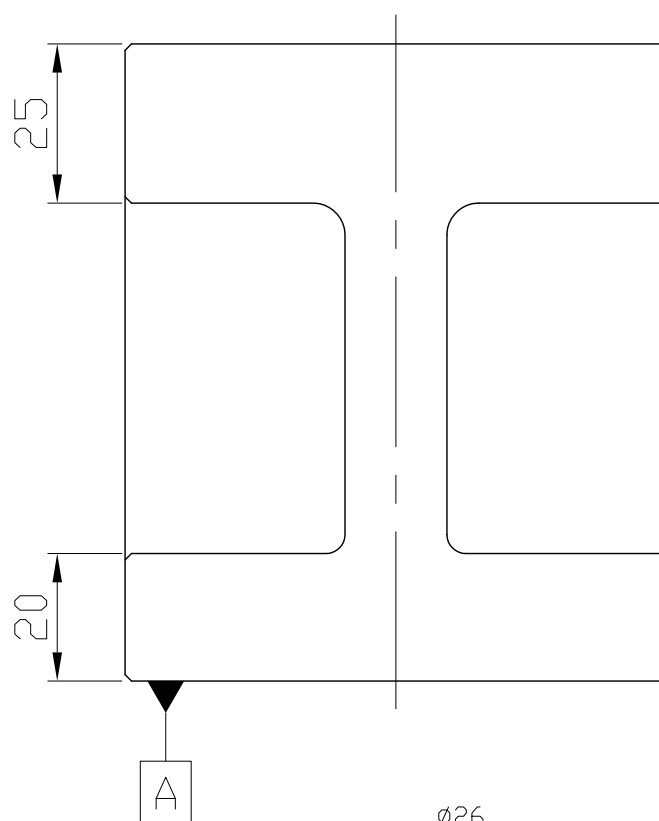
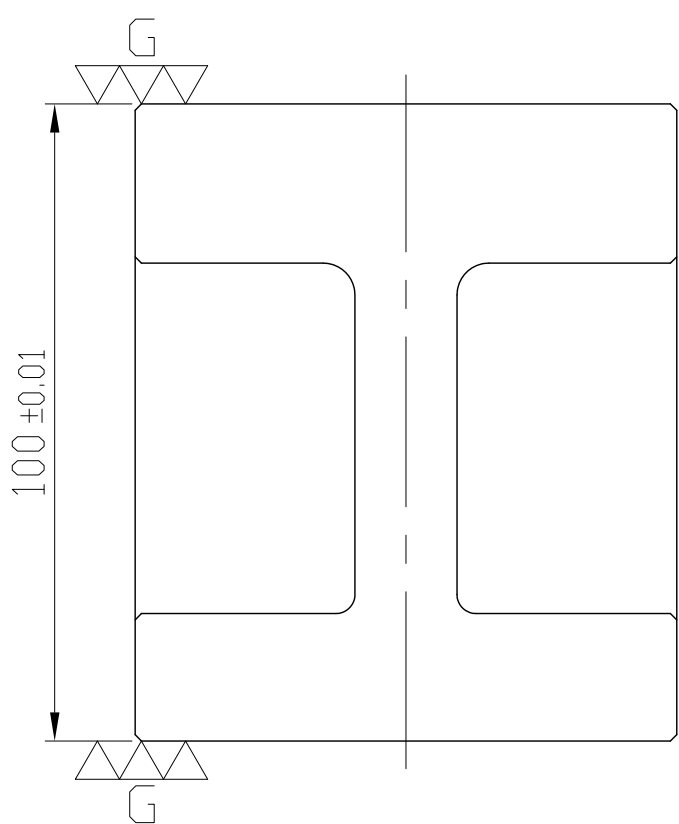
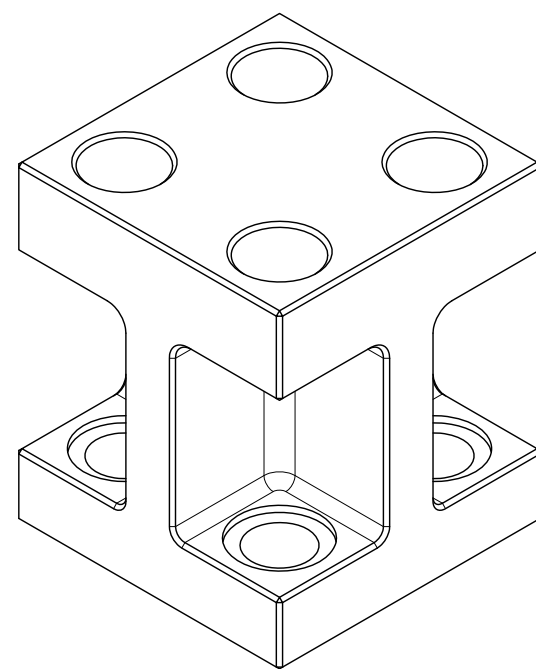
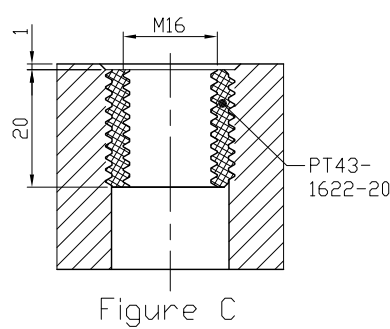
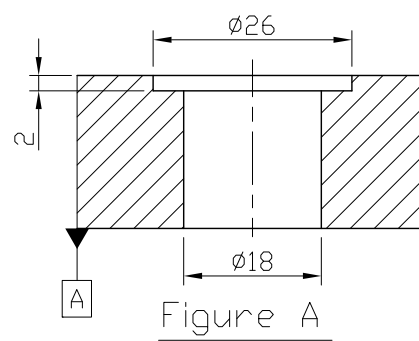


4-M16
Inserted
(Figure C)




4-M16
Cap-Screw hole
(Figure A)



*Edge chamfered C1

NW:3.64KG

Material FC300		Heat treatment Annealing Process			Surface treatment		
Drafted by KENZI	Checked by	Approved by	Scale 1/1	Date 2014.11.18	Sheet 1/1	Edition A	
 LEAVE INDUSTRIAL CO., LTD.			TITLE H/CAST SECTION				
			DWG.ND. BP35-085085-0100-16				