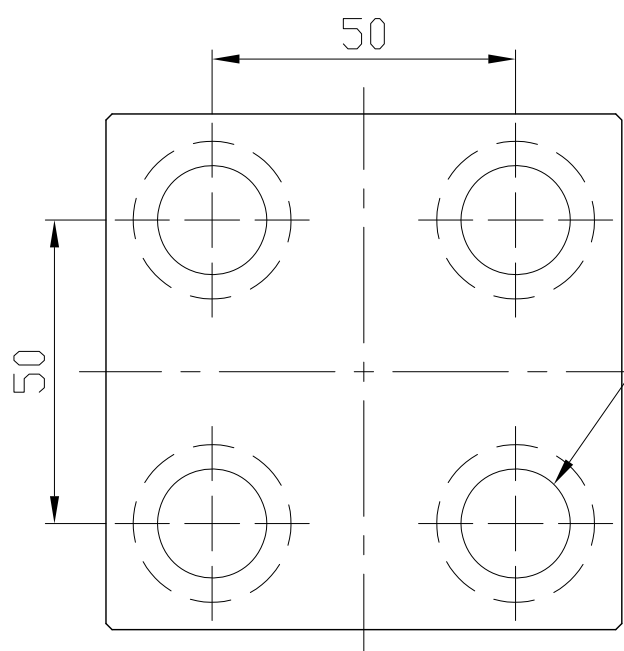
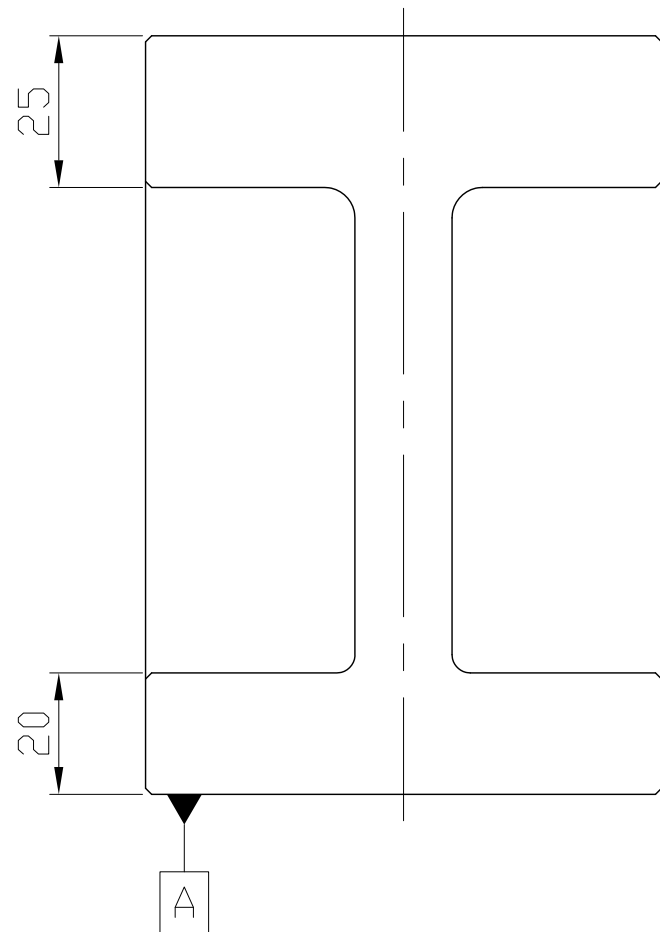
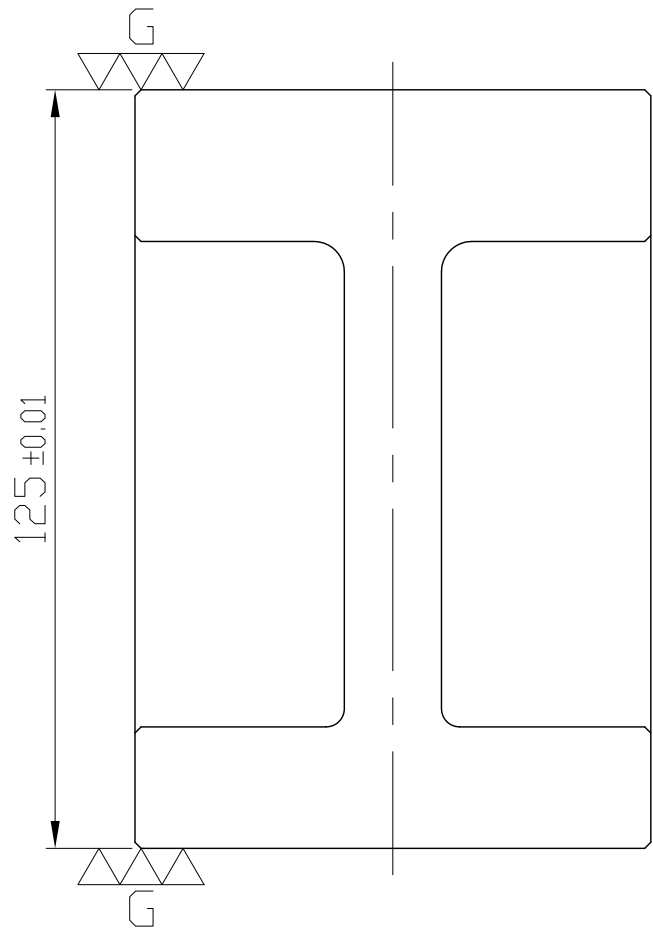
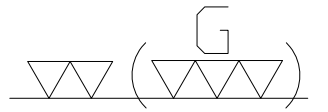
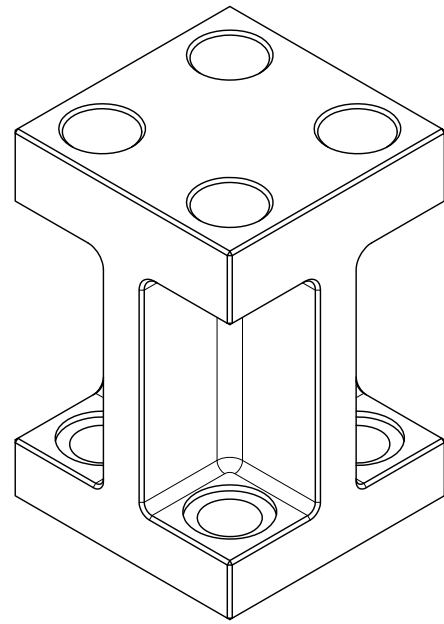
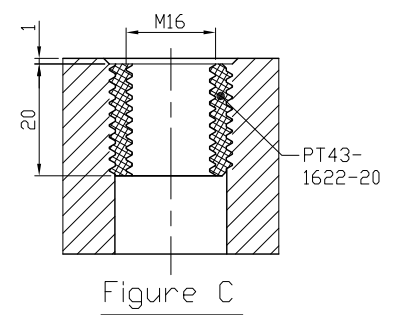
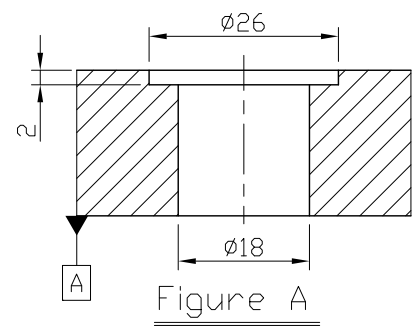


4-M16  
Inserted  
(Figure C)



4-M16  
Cap-Screw hole  
(Figure A)



\*Edge chamfered C1

NW:4.13KG

Material FC300		Heat treatment Annealing Process			Surface treatment		
Drafted by KENZI	Checked by	Approved by		Scale 1/1	Date 2014.11.18	Sheet 1/1	Edition A
				TITLE H/CAST SECTION			
				DWG.NO. BP35-085085-0125-16			