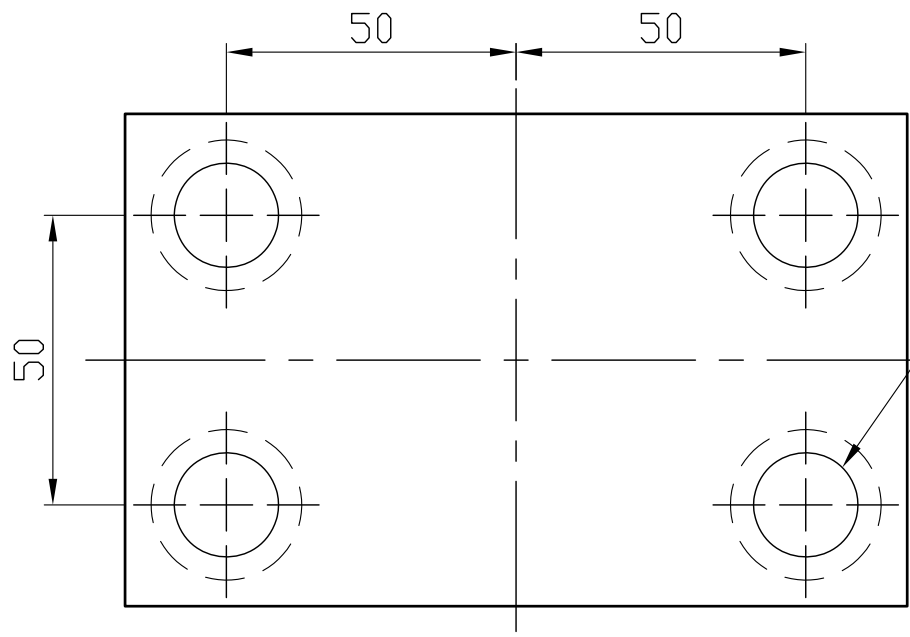
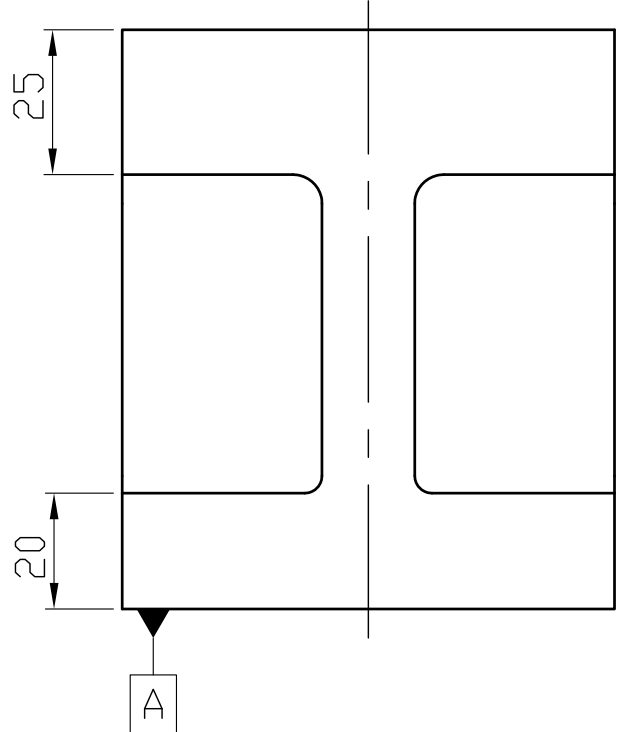
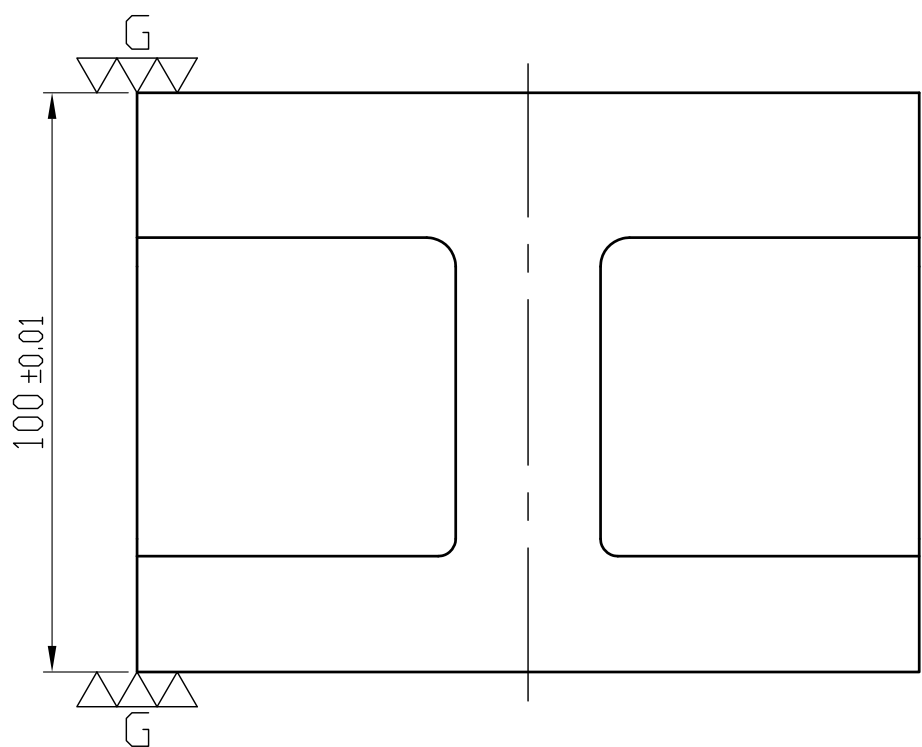
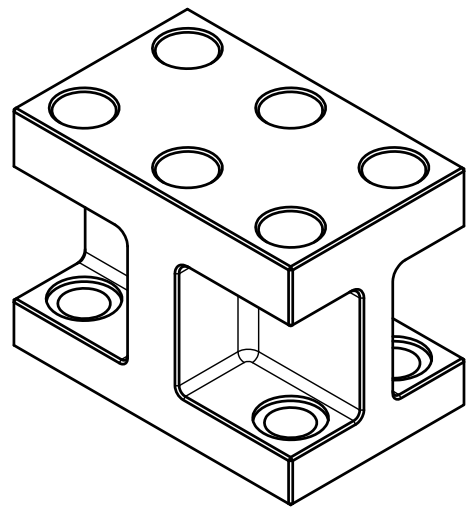
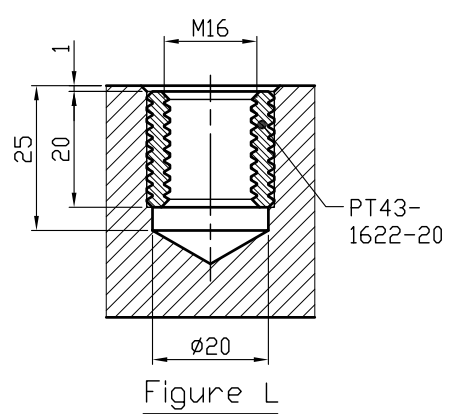
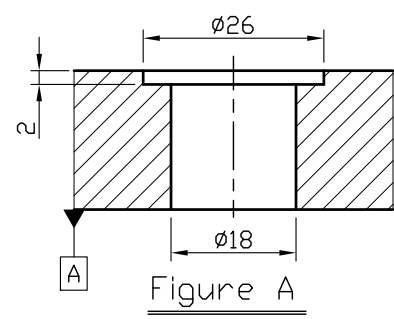


6-M16
Inserted
(Figure L)



4-M16
Cap-Screw hole
(Figure A)



*Edge chamfered C1

NW:5.76KG

Material FC300		Heat treatment Annealing Process			Surface treatment		
Drafted by KENZI	Checked by	Approved by		Scale 1/1	Date 2014.11.18	Sheet 1/1	Edition A
			TITLE H/CAST SECTION				
			DWG.NO. BP36-135085-0100-16				