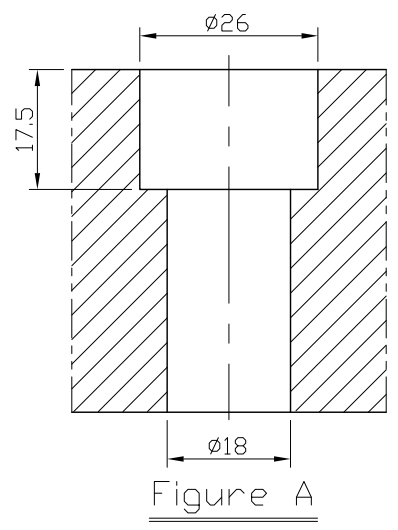


2-ø30<sup>+0.020</sup>  
+0.007  
Locating hole

6-M16  
Cap-Screw hole  
(Figure A)

// 0.02/300  
⊥ 0.02/300  
50±0.02



\*Edge chamfered C2

NW:106KG

Material FC300		Heat treatment Annealing Process		Surface treatment			
Drafted by S.C.H	Checked by	Approved by	Scale 1/1	Date 2011.10.05	Sheet 1/1	Edition B	
			TITLE M/C BASE PLATE				
			DWG.NO. BP01-50500-0600				