

2-∅30^{+0.020}
+0.007
Locateing hole

6-M16
Cap-Screw hole
(Figure A)

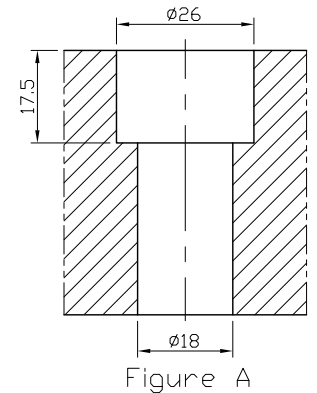


Figure A

*Edge chamfered C2

NW:256KG

Material FC300		Heat treatment Annealing Process		Surface treatment			
Drafted by S.C.H	Checked by	Approved by	Scale 1/1	Date 2011.10.05	Sheet 1/1	Edition B	
			TITLE M/C BASE PLATE				
			DWG.NO. BP01-50600-1200				