

4-M16
Cap-Screw hole
(Figure C)

4- $\phi 20^{+0.020}$
Thru

18 T-Slots
(Figure D)

$\phi 30^{+0.020}$
Thru

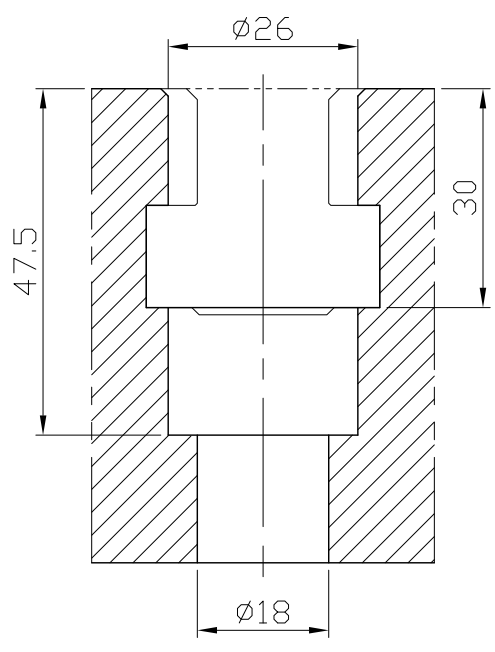
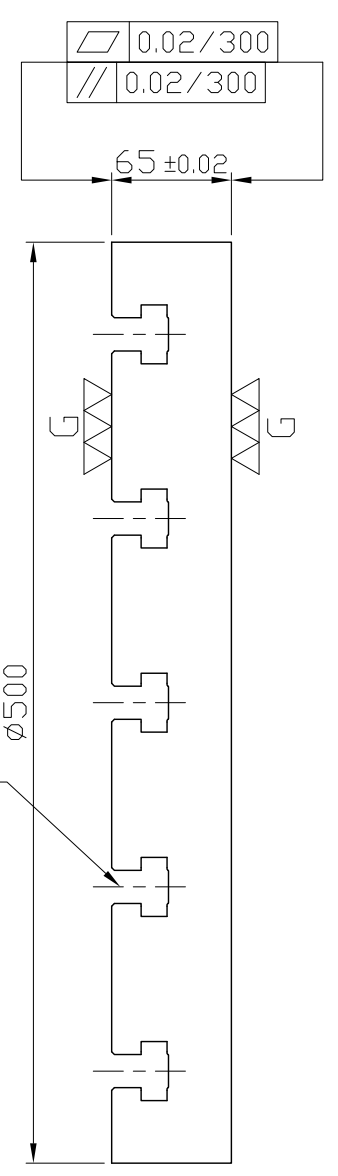


Figure C

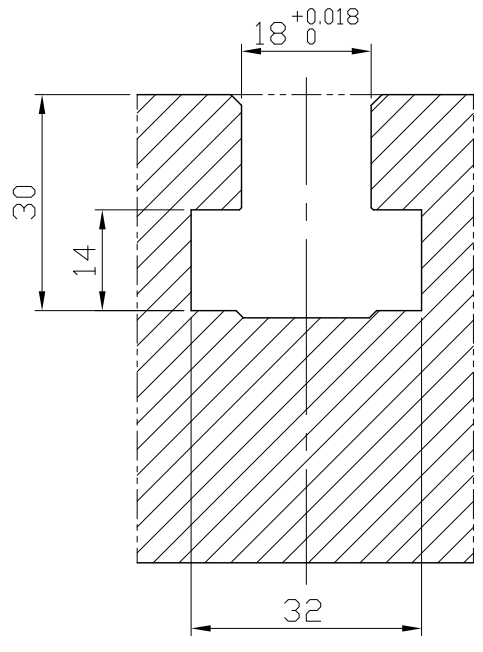


Figure D

*Edge chamfered C2

NW:74KG

Material FC300		Heat treatment Annealing Process			Surface treatment			
Drafted by S.C.H	Checked by	Approved by	Scale 1/1	Date 2011.10.19	Sheet 1/1	Edition A		
			TITLE ROUND BASE PLATE					
			DWG.NO. BP18-65-0500-18					