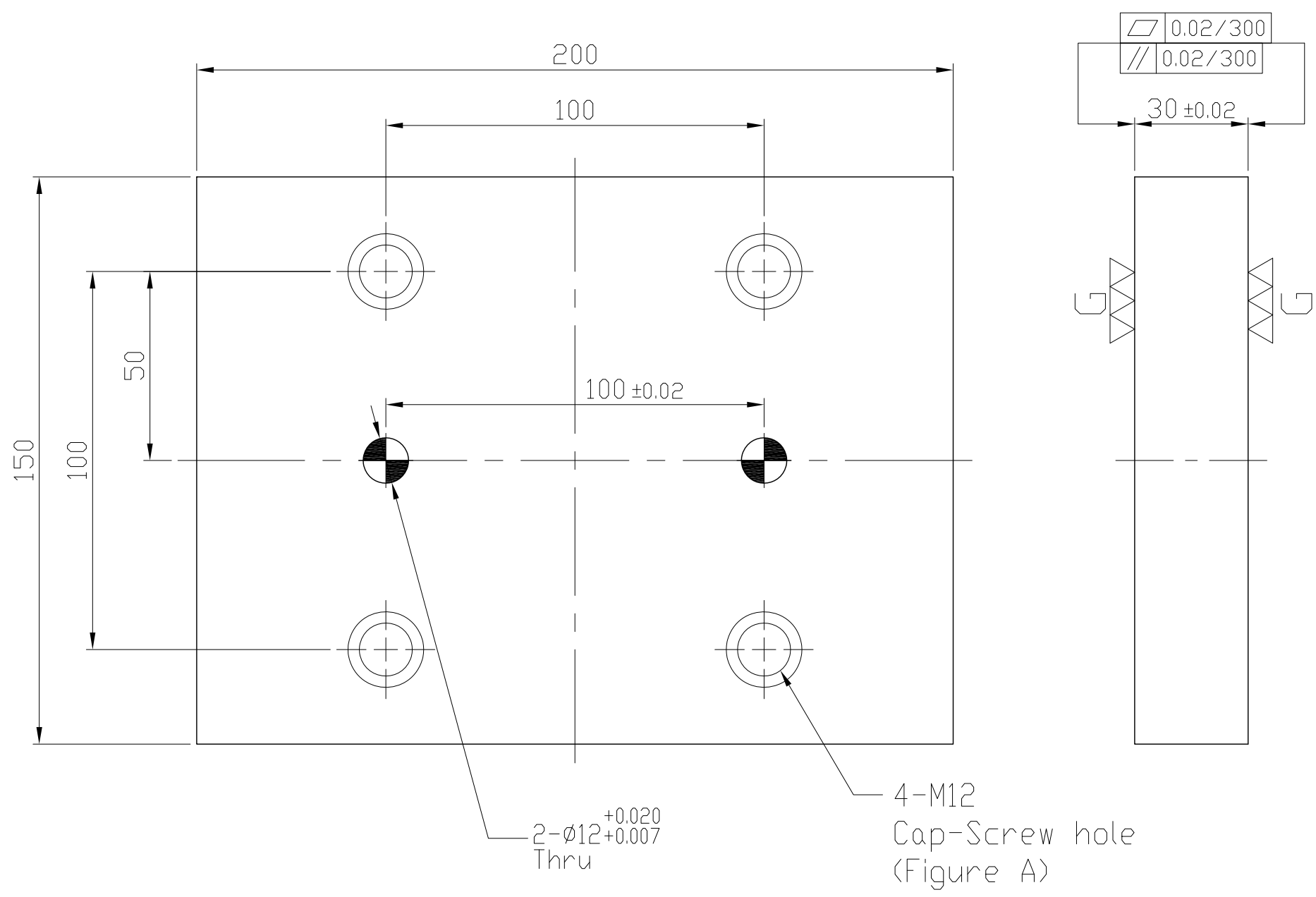
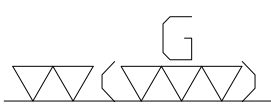


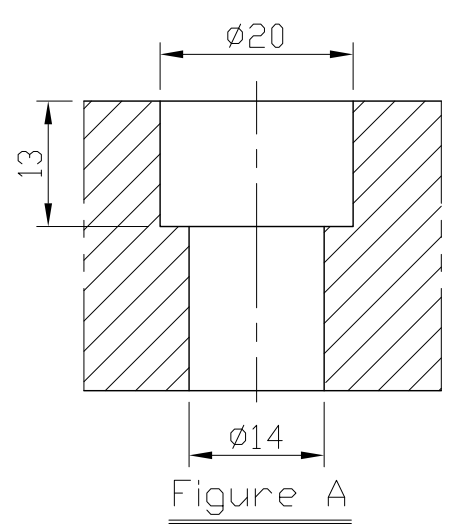
1 2 3 4 5 6 7 8 9 10 11 12 13 14 15 16 17 18 19 20

A  
B  
C  
D  
E  
F  
G  
H  
I  
J  
K  
L  
M  
N  
O  
P  
Q  
R  
S  
T  
U  
V  
W  
X  
Y  
Z  
AA  
AB



2- $\phi 12^{+0.020}_{+0.007}$   
Thru

4-M12  
Cap-Screw hole  
(Figure A)



\*Edge chamfered C2

NW:6.6KG

|                     |            |                                     |                               |                    |                   |              |  |
|---------------------|------------|-------------------------------------|-------------------------------|--------------------|-------------------|--------------|--|
| Material<br>FC300   |            | Heat treatment<br>Annealing Process |                               |                    | Surface treatment |              |  |
| Drafted by<br>S.C.H | Checked by | Approved by                         | Scale<br>1/1                  | Date<br>2012.01.12 | Sheet<br>1/1      | Edition<br>A |  |
|                     |            |                                     | TITLE<br>SUB-PLATE            |                    |                   |              |  |
|                     |            |                                     | DWG.NO.<br>BP19-30150-0200-12 |                    |                   |              |  |

1 2 3 4 5 6 7 8 9 10 11 12 13 14 15 16 17 18 19 20