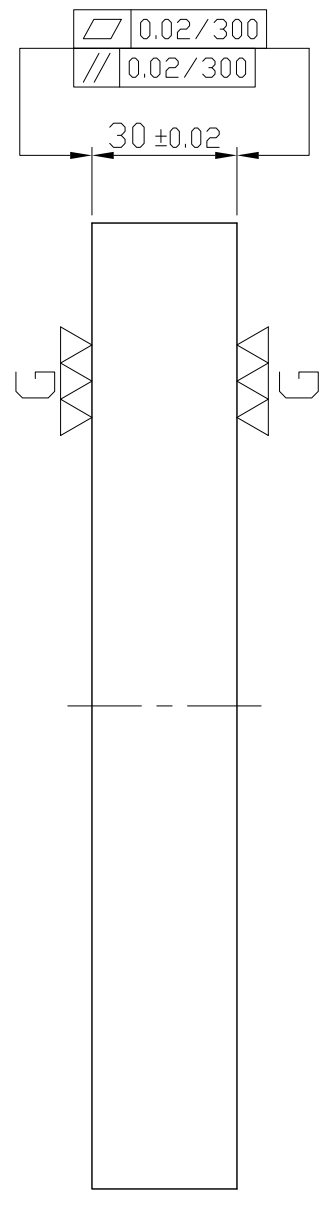
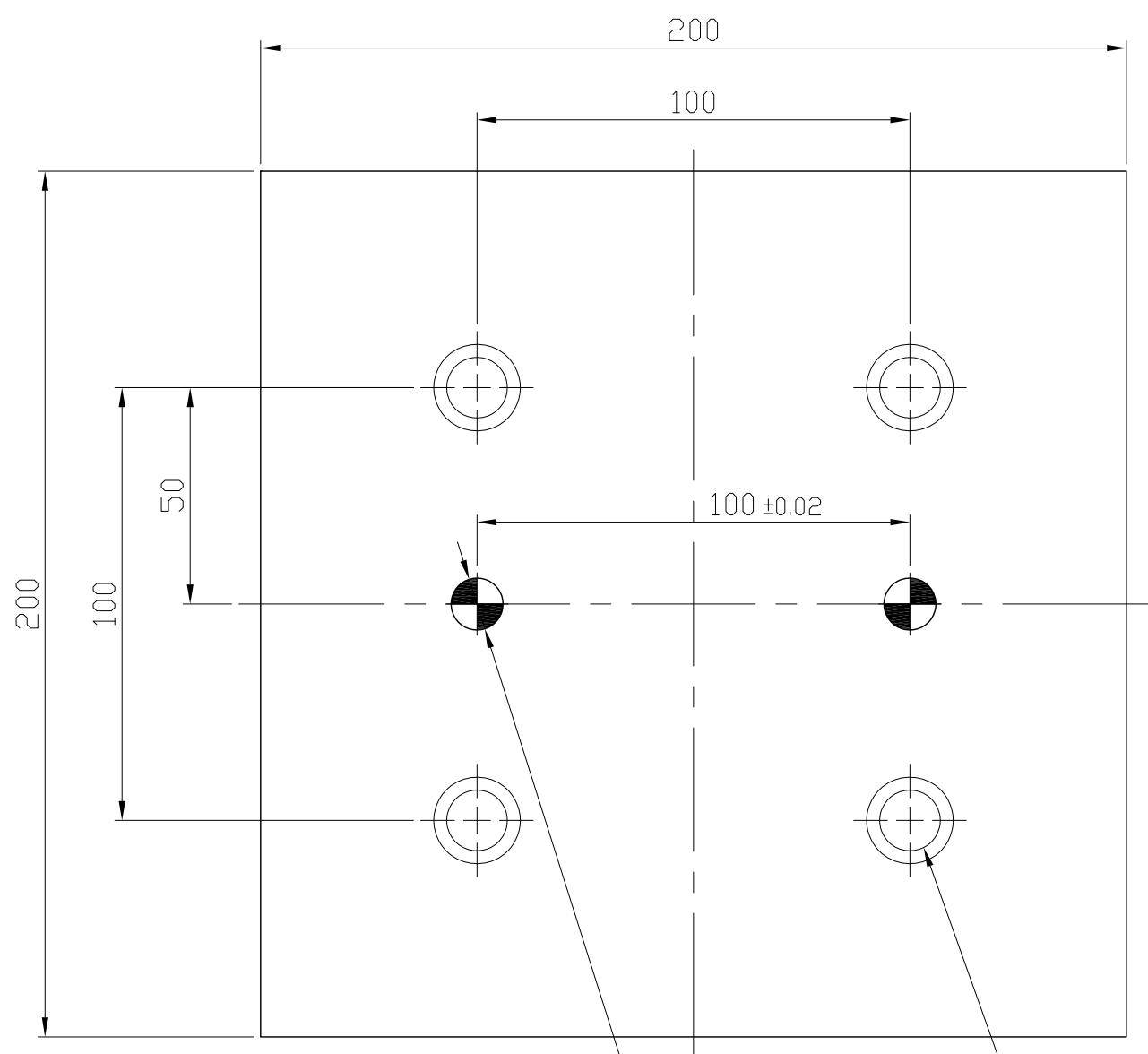
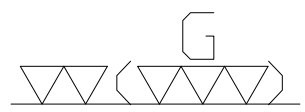
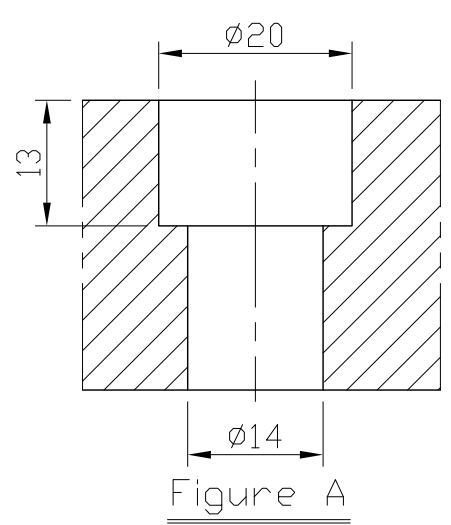


1 2 3 4 5 6 7 8 9 10 11 12 13 14 15 16 17 18 19 20

A B C D E F G H I J K L M N O P Q R S T U V W X Y Z AA AB



2- $\phi 12^{+0.020}_{+0.007}$ Thru
4-M12 Cap-Screw hole (Figure A)



*Edge chamfered C2

NW:9KG

Material FC300		Heat treatment Annealing Process			Surface treatment		
Drafted by S.C.H	Checked by	Approved by		Scale 1/1	Date 2012.01.12	Sheet 1/1	Edition A
				TITLE SUB-PLATE			
				DWG.NO. BP19-30200-0200-12			

1 2 3 4 5 6 7 8 9 10 11 12 13 14 15 16 17 18 19 20