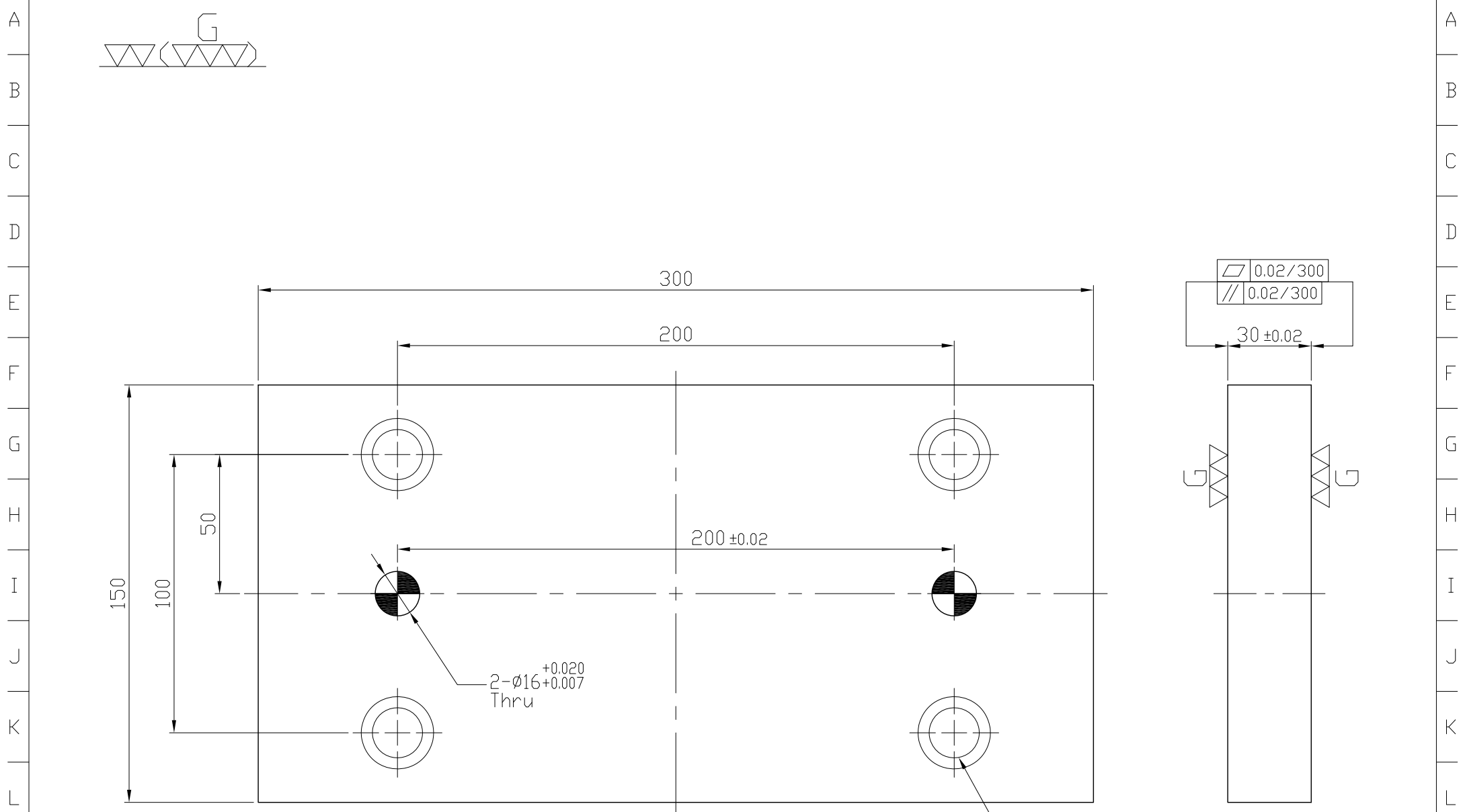


1 2 3 4 5 6 7 8 9 10 11 12 13 14 15 16 17 18 19 20



2- $\phi 16^{+0.020}_{+0.007}$   
Thru

4-M16  
Cap-Screw hole  
(Figure A)

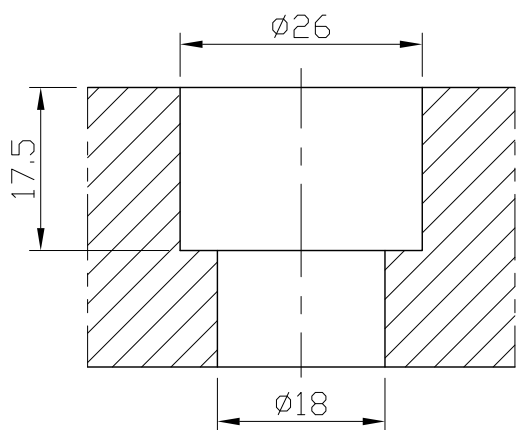
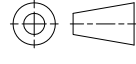



Figure A

\*Edge chamfered C2

NW:10KG

Material FC300		Heat treatment Annealing Process			Surface treatment		
Drafted by S.C.H	Checked by	Approved by		Scale 1/1	Date 2012.01.12	Sheet 1/1	Edition A
 <b>LEAVE INDUSTRIAL CO., LTD.</b>			TITLE SUB-PLATE				
			DWG.NO. BP19-30150-0300-16				

1 2 3 4 5 6 7 8 9 10 11 12 13 14 15 16 17 18 19 20