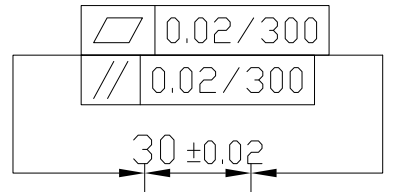
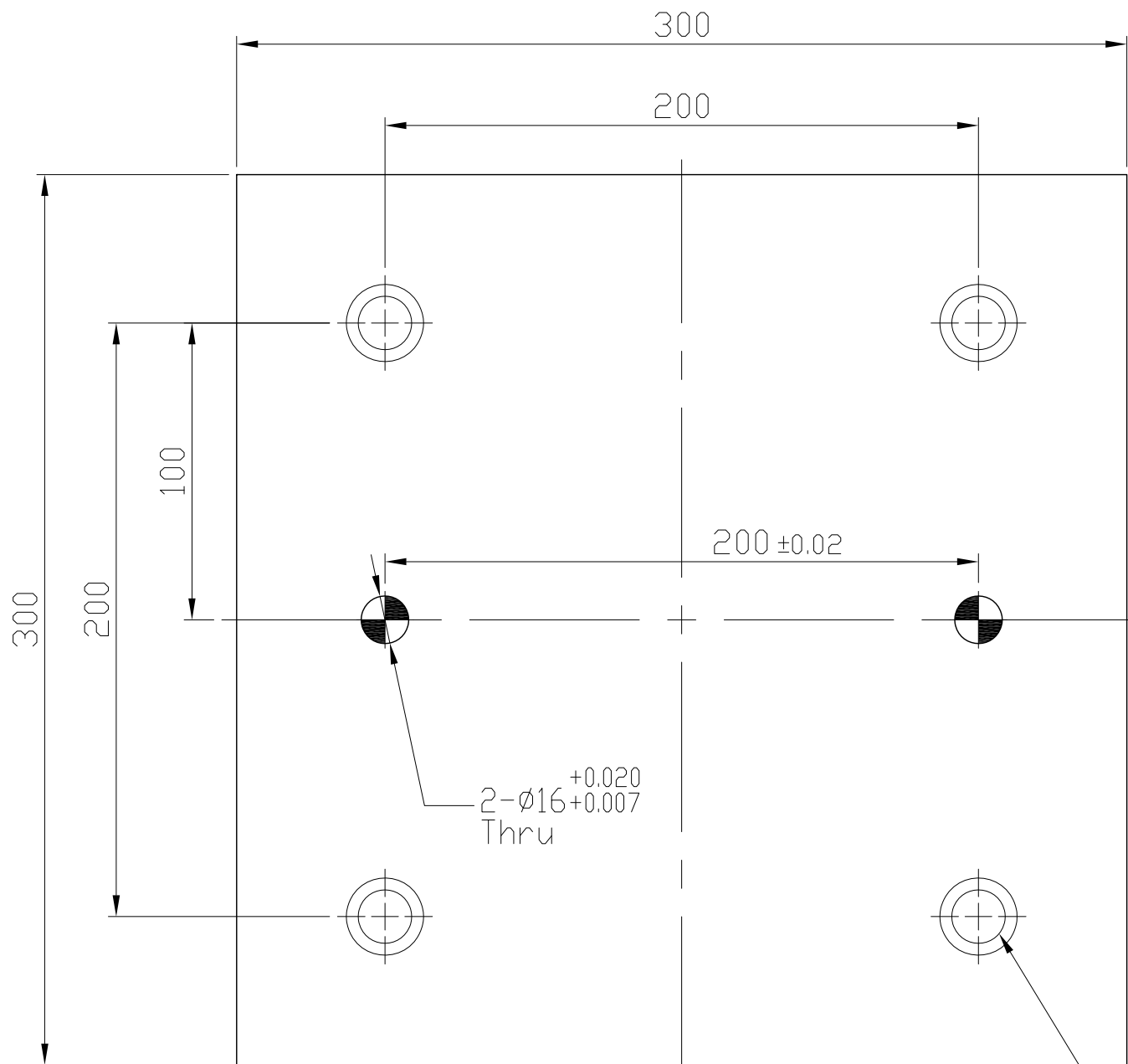
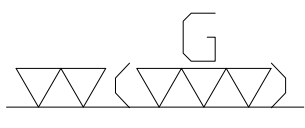


1 2 3 4 5 6 7 8 9 10 11 12 13 14 15 16 17 18 19 20

A B C D E F G H I J K L M N O P Q R S T U V W X Y Z AA AB



2- $\phi 16^{+0.020}$
Thru $+0.007$

4-M16
Cap-Screw hole
(Figure A)

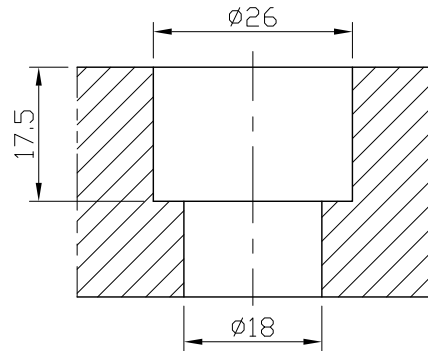


Figure A

*Edge chamfered C2

NW:20KG

Material FC300		Heat treatment Annealing Process			Surface treatment		
Drafted by S.C.H	Checked by	Approved by		Scale 1/1	Date 2012.01.12	Sheet 1/1	Edition A
			TITLE SUB-PLATE				
			DWG.NO. BP19-30300-0300-16				

1 2 3 4 5 6 7 8 9 10 11 12 13 14 15 16 17 18 19 20