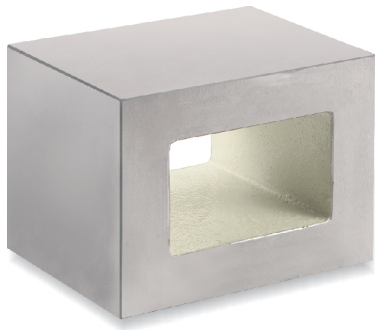


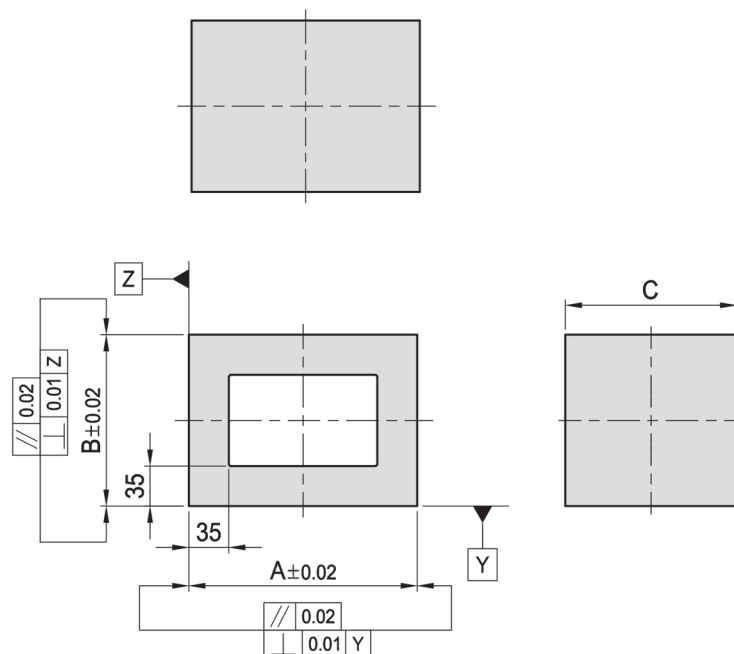
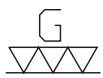
BP25

方型墊塊

RECTANGULAR CAST SECTION



- 材質：FC30
- 熱處理：燒鈍
- 用途：適用於基板或基座上
- 特長：因應工件之高低或段差給予輔助用，可依實際需要，自行鑽孔加工製作專用治具。



MODEL NO.	A	B	C	kg
BP25-200150-0150	200	150	150	23
BP25-250150-0200	250	200	150	30
BP25-300200-0250	300	250	200	56

※ 特殊尺寸可另行訂製！