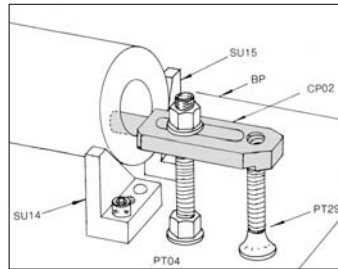


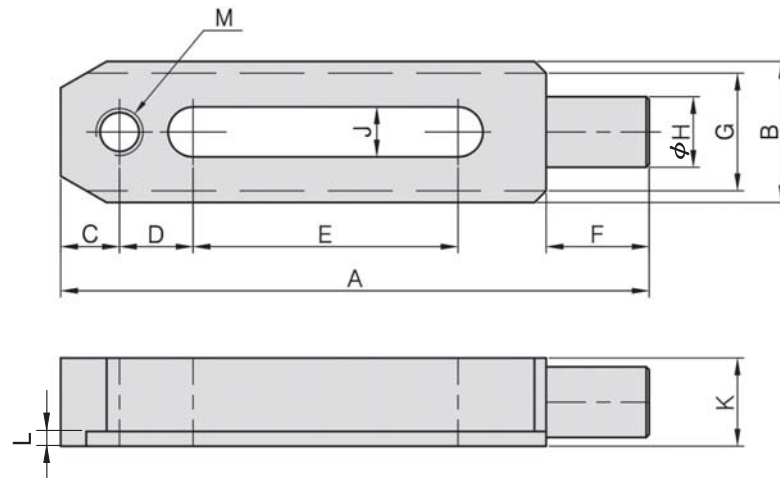


- 材質：S45C
- 熱處理：HRC 32°~38°
- 表面：染黑處理
- 用途：工件壓緊用
- 特長：施壓點為圓孔，凹處或圓弧狀，最為適用。



CP02

圓形壓板 TAPPED-NOSE STRAP



MODEL NO.	A	B	C	D	E	F	G	H	J	K	L	M	Kg
CP02-12150	150	38	15	20	70	25	30	18	13	22	4	M12	0.58
CP02-16150	150	48	20	25	40	35	40	24	17	32	5	M16	1.12
CP02-16200	200	48	20	25	90	35	40	24	17	32	5	M16	1.50
CP02-20200	200	60	30	35	60	40	50	28	21	35	6	M20	2.22
CP02-20250	250	60	30	35	110	40	50	28	21	35	6	M20	2.74