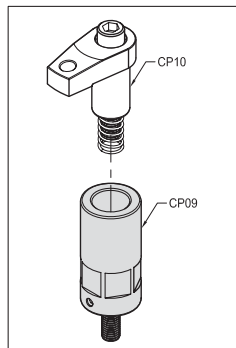


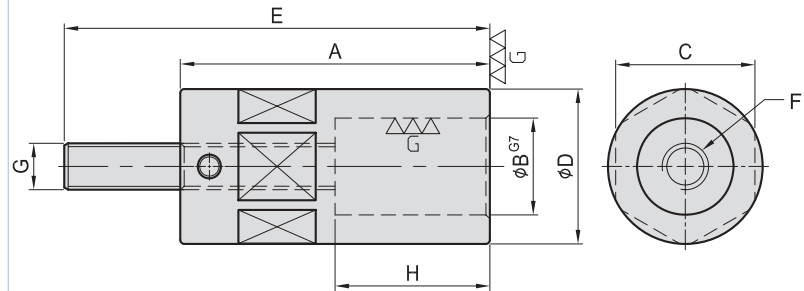


- 材質：S45C
- 熱處理：HRC 38°~ 42°
- 表面：染黑處理
- 特長：與 CP10 配合組成一夾具，固定於基板或基座上，夾持工件之用。



CP09

鉤式夾具固定桿 SWING CLAMP MOUNT/EXTENSION



MODEL NO.	A	B	C	D	E	F	G	H	kg
CP09-12080	80	25	36	40	110	M12	M12	40	0.60
CP09-12100	100				130				0.78
CP09-16080	80	32	46	50	110	M16	M16	40	0.83
CP09-16100	100				130				1.25