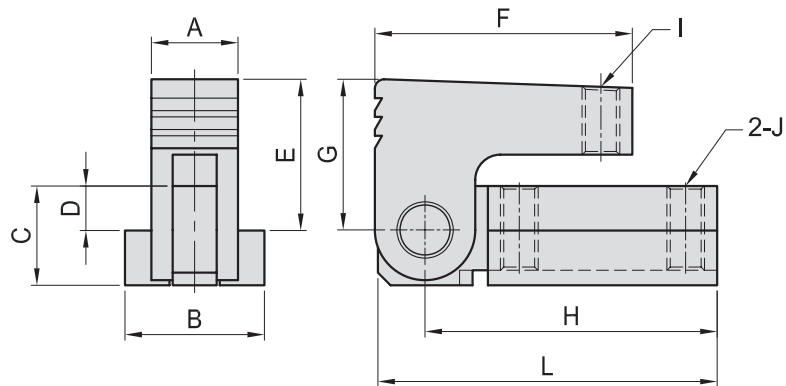


# CP22

## T型夾持件 T-SLOT MINIATURE CLAMP



- 材質：S45C
- 熱處理：HRC 32°~ 38°
- 表面：染黑處理



MODEL NO.	A	B	C	D	E	F	G	H	I	L	J	kg
CP22-1218	10.8	17.5	12.7	7.2	23.2	41	22.0	48.0	M6	54.0	M6	0.10
CP22-1422	13.8	22.2	15.8	7.1	24.1		24.0	46.0				0.15
CP22-1625	15.8	25.4	15.8	7.1	27.1	50	27.0	55.0	M8	65.0	M8	0.22
CP22-1828	17.5	28.5	19.0	7.9	28.9		29.0					0.29
CP22-2032	19.7	31.7	25.4	11.4	33.9	50	34.0	55.0	M10	65.0	M10	0.40
CP22-2240	21.7	38.0	28.0	12.8	39.8	65	39.5	71.0	M12	81.5	M12	0.70
CP22-2841	27.5	46.7	44.0	25.0	49.0	71	49.0	72.5		86.5		1.20
CP22-3559	34.7	55.0	48.0	24.5	64.0	103	62.5	113.5	M16	130.0	M16	2.75