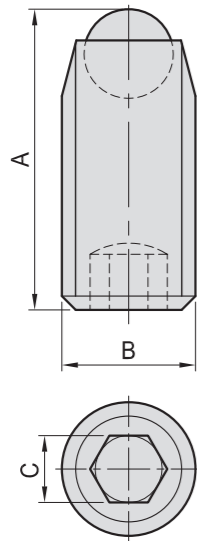


PT16

動向鋼珠螺桿 SWIVEL CLAMPING SCREW

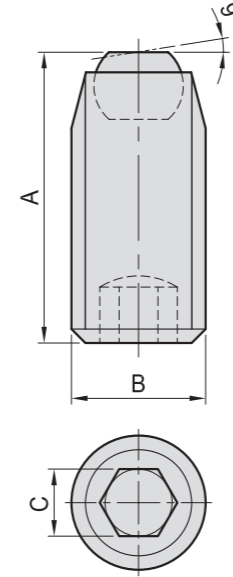
PT16A 圓球型 ROUND END



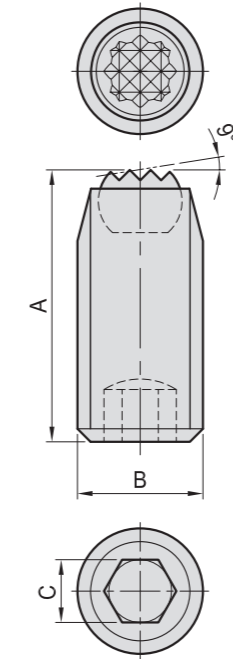
- 材質：本體 SCM435 鋼珠 SUJ2
- 熱處理：本體 HRC 28°~32°，鋼珠 HRC 62°
- 用途：配合治具零件的組成，可做夾持或支持之用
- 特長：點接觸，工件不易變形

MODEL NO.	A	B	C	max (KN)	g
PT16A-0408	8.0	M4	2	4	0.6
PT16A-0410	10.0				0.7
PT16A-0412	12.0				0.8
PT16A-0416	16.0	M5	2.5	5	1.1
PT16A-0510	10.0				1.0
PT16A-0512	12.0				1.3
PT16A-0516	16.0	M6	3	9	1.7
PT16A-0520	20.0				2.3
PT16A-0525	25.0				2.9
PT16A-0610	10.8	M8	4	15	1.5
PT16A-0615	13.5				2.4
PT16A-0616	16.8				2.4
PT16A-0620	20.8	M10	5	20	3.0
PT16A-0625	23.5				3.8
PT16A-0812	12.0				3.2
PT16A-0816	17.2	M12	6	30	4.1
PT16A-0820	20.0				5.8
PT16A-0825	26.2				7.3
PT16A-0830	30.0	M16	8	60	9.0
PT16A-1014	15.0				5.0
PT16A-1015	16.0				6.7
PT16A-1020	21.0	M20	10	90	8.7
PT16A-1025	26.0				11.2
PT16A-1030	31.0				13.7
PT16A-1035	36.0	M24	12	120	16.2
PT16A-1040	41.0				18.7
PT16A-1218	18.2				10.0
PT16A-1220	23.2	M20	10	90	12.5
PT16A-1230	31.2				20.0
PT16A-1240	41.2				30.0
PT16A-1250	51.2	M24	12	120	40.0
PT16A-1625	25.6				28.0
PT16A-1635	35.6				40.0
PT16A-1645	45.6	M20	10	90	45.0
PT16A-1655	55.6				55.0
PT16A-1665	65.6				65.0
PT16A-2030	32.0	M24	12	120	54.0
PT16A-2040	42.0				74.0
PT16A-2050	52.0				94.0
PT16A-2060	62.0	M24	12	120	120.0
PT16A-2090	92.0				170.0
PT16A-2435	37.0				90.0
PT16A-2450	52.0	M24	12	120	130.0
PT16A-2480	82.0				235.0

PT16B 平面型 FLAT END



PT16C 齒型 SERRATED END



MODEL NO.	MODEL NO.	A	B	C	max (KN)	g
PT16B-0610	PT16C-0610	10.3	M6	3	9	1.5
PT16B-0615	PT16C-0615	13.0				2.4
PT16B-0616	PT16C-0616	16.3				2.4
PT16B-0620	PT16C-0620	20.3	M8	4	15	3.0
PT16B-0625	PT16C-0625	23.0				3.8
PT16B-0812	PT16C-0812	11.2				3.2
PT16B-0816	PT16C-0816	16.4	M10	5	20	4.1
PT16B-0820	PT16C-0820	19.2				5.8
PT16B-0825	PT16C-0825	25.4				7.3
PT16B-0830	PT16C-0830	29.2	M12	6	30	9.0
PT16B-1014	PT16C-1014	14.0				5.0
PT16B-1015	PT16C-1015	15.0				6.7
PT16B-1020	PT16C-1020	20.0	M16	8	60	8.7
PT16B-1025	PT16C-1025	25.0				11.2
PT16B-1030	PT16C-1030	30.0				13.7
PT16B-1035	PT16C-1035	35.0	M20	10	90	16.2
PT16B-1040	PT16C-1040	40.0				18.7
PT16B-1218	PT16C-1218	17.0				10.0
PT16B-1220	PT16C-1220	22.0	M24	12	120	12.5
PT16B-1230	PT16C-1230	30.0				20.0
PT16B-1240	PT16C-1240	40.0				30.0
PT16B-1250	PT16C-1250	50.0	40.0			
PT16B-1625	PT16C-1625	24.0	M20	10	90	28.0
PT16B-1635	PT16C-1635	34.0				40.0
PT16B-1645	PT16C-1645	44.0				45.0
PT16B-1655	PT16C-1655	54.0	M24	12	120	55.0
PT16B-1665	PT16C-1665	64.0				65.0
PT16B-2030	PT16C-2030	30.0				54.0
PT16B-2040	PT16C-2040	40.0	M20	10	90	74.0
PT16B-2050	PT16C-2050	50.0				94.0
PT16B-2060	PT16C-2060	60.0				120.0
PT16B-2090	PT16C-2090	90.0	M24	12	120	170.0
PT16B-2435	PT16C-2435	35.0				90.0
PT16B-2450	PT16C-2450	50.0				130.0
PT16B-2480	PT16C-2480	80.0	235.0			

BP

BPA

BC

CP

SU

PT

SVF

ALV

OK-
VISE

MITEE-
BITE

其他類

技術
資料