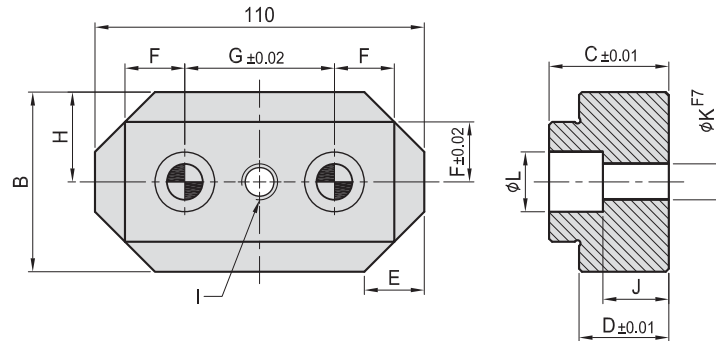
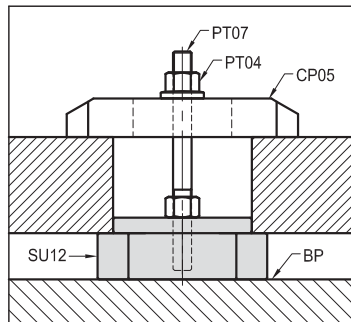


SU12

POSITIONING EDGE SUPPORT



- Material : S45C(JIS) / CK45(DIN)
- Heat treated : HRC 45°.
- Application : Work piece support & positioning.



MODEL NO.	A	B	C	D	E	F	G	H	I	J	K	L	kg
SU12-1230	110	60	40	30	20	20	50	30	M12	22	12	20	1.50
SU12-1240			50	40						32			1.92
SU12-1630	110	60	40	30	20	20	50	30	M16	17	16	26	1.40
SU12-1640			50	40						26			1.80

SVF

ALV

OK-
VISE

OTHER

Column
for
Technical
Data