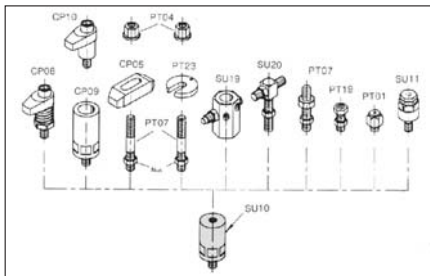
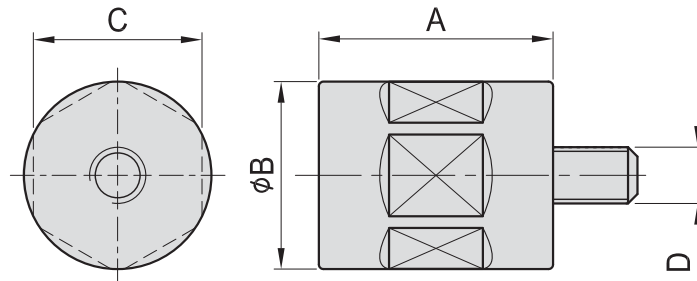


SU10

RISER CYLINDER



- Material : S45C(JIS) / CK45(DIN)
- Heat treated : HRC 38°.
- Surface finish : Black Oxide.
- Application : Elevate a work stop or clamp.



MODEL NO.	A	B	C	D	kg
SU10-1250	50	40	36	M12	0.45
SU10-1265	65				0.59
SU10-1280	80				0.74
SU10-1650	50	50	46	M16	0.72
SU10-1665	65				0.84
SU10-1680	80				1.20