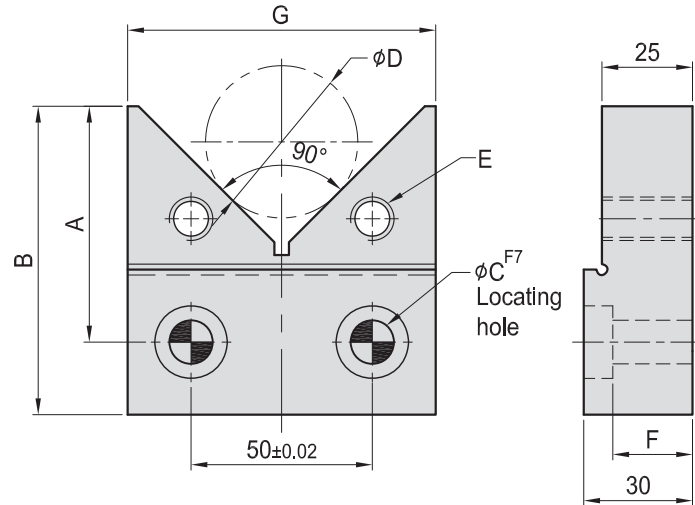
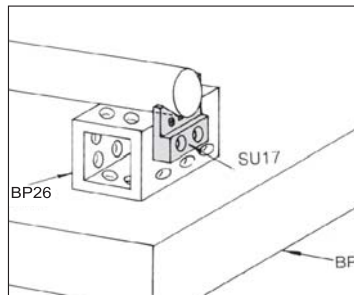


# SU17

## V BLOCK



- Material : S45C(JIS) / CK45(DIN)
- Heat treated : HRC 45°.
- Application : Easily mounts to any fixture to support round parts.



MODEL NO.	A	B	C	D		E	F	G	kg
				Max.	Min.				
SU17-1215-080	65	85	12	80	15	M12	22	85	1.10
SU17-1215-100	75	95		100	1.30				
SU17-1615-080	65	85	16	80	15	M16	25	85	1.02
SU17-1615-100	75	95		100	1.20				