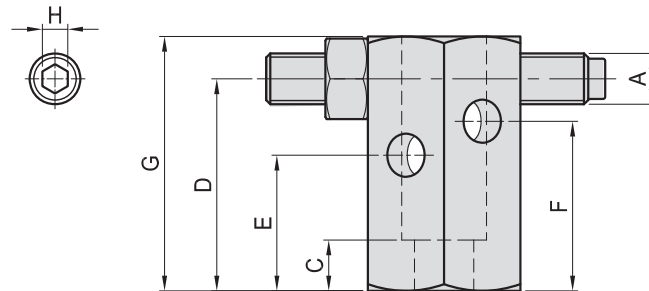
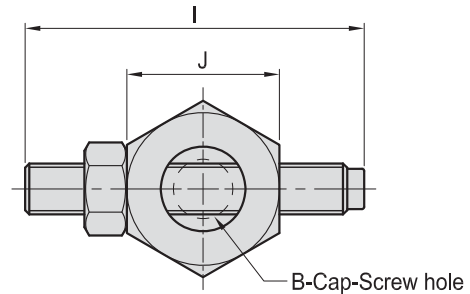
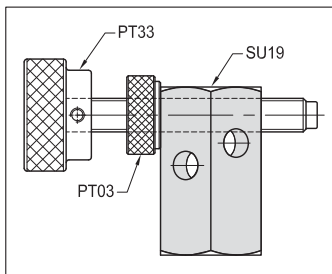


SU19

ADJUSTABLE STOP



- Material : S45C(JIS) / CK45(DIN)
- Heat treated : HRC 32°~38°.
- Surface finish : Black Oxide.
- Application : Multipurpose work piece positioning.



MODEL NO.	A	B	C	D	E	F	G	H	I	J	kg
SU19-1280	M12	M12	12	32	40	50	60	6	80	36	0.43
SU19-1690	M16	M16	14	40	50	63	80	8	90	46	0.89

BP

BPA

BC

CP

SU

PT