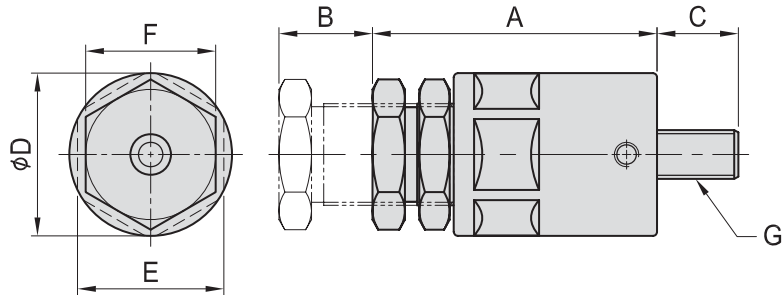
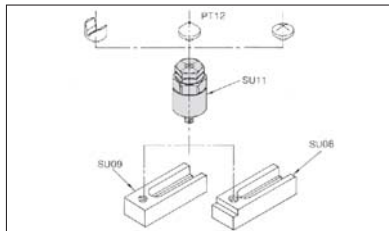


# SU11

## 可調式頂桿 SUPPORT JACK



- 材質：S45C
- 熱處理：HRC 38°~40°
- 表面：染黑處理
- 用途：可與 PT12 之治具零件配合使用



MODEL NO.	A	B	C	D	E	F	G	kg
SU11-1265	65	20	20	40	36	32	M12	0.54
SU11-1665	65	20	20	50	46	36	M16	0.82

BP

BPA

BC

CP

SU

PT