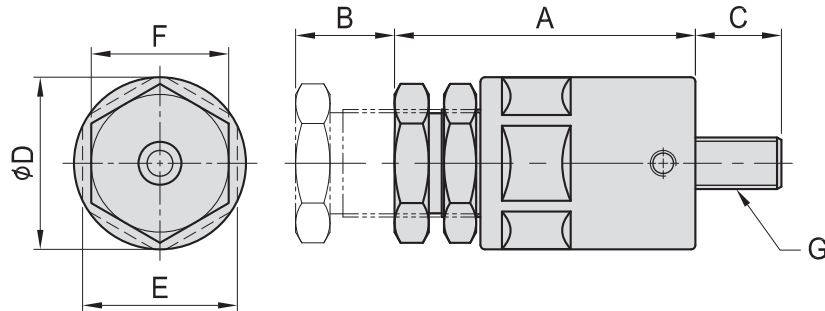
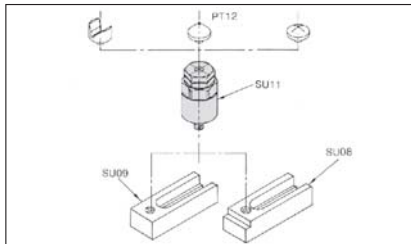


SU11

SUPPORT JACK



- Material : S45C(JIS) / CK45(DIN)
- Heat treated : HRC 38°~40°.
- Surface finish : Black Oxide.
- Application : Multipurpose support part.



MODEL NO.	A	B	C	D	E	F	G	kg
SU11-1265	65	20	20	40	36	32	M12	0.54
SU11-1665	65	20	20	50	46	36	M16	0.82

BP

BPA

BC

CP

SU

PT