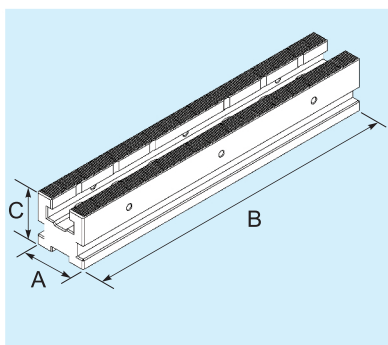
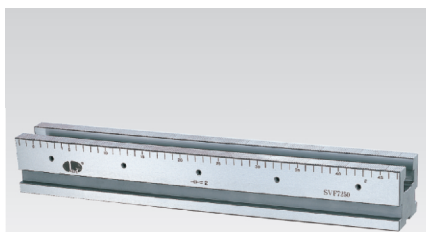


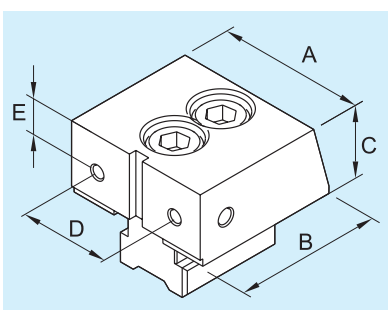
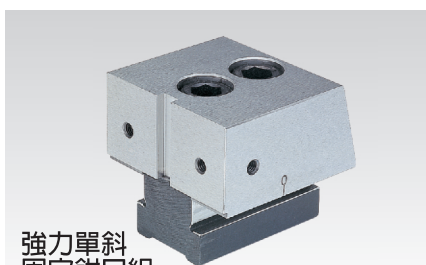
# SVF

## 選購組立件



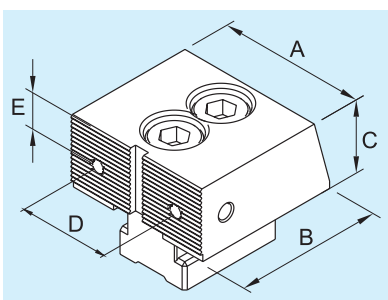
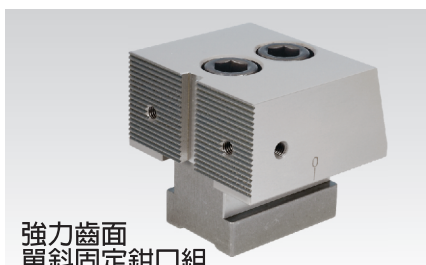
本體(適用於A與B/BE系列)

型 式	A	B	C	kg
SVF-AB01-5030-80	50	300	50	4.0
SVF-AB01-5030-100				
SVF-AB01-5040-80	50	400	50	5.3
SVF-AB01-5040-100				
SVF-AB01-5050-80	50	500	50	6.7
SVF-AB01-5050-100				
SVF-AB01-5060-80	50	600	50	8.0
SVF-AB01-5060-100				
SVF-AB01-5070-80	50	700	50	9.5
SVF-AB01-5070-100				
SVF-AB01-7240-100	72	400	72	11.2
SVF-AB01-7250-100		500		14.0
SVF-AB01-7260-100	72	600	72	17.0
SVF-AB01-7270-100		700		20.0
SVF-AB01-10040-100	100	400	72	16.0
SVF-AB01-10050-100		500		20.0
SVF-AB01-10060-100	100	600	72	24.0
SVF-AB01-10070-100		700		28.0



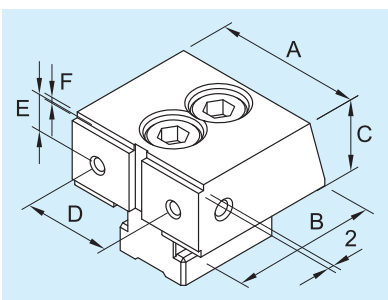
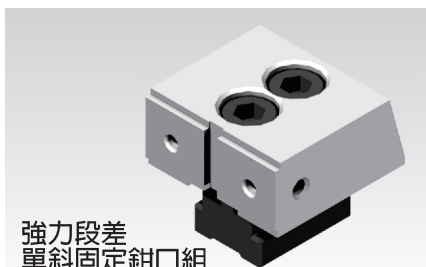
強力單斜  
固定鉗口組  
(適用於B系列)

型 式	A	B	C	D	E	kg
SVF-AB02-50	50	50	25	30	12.5	0.6
SVF-AB02-72	72	74	40	44	21.5	2.0
SVF-AB02-100	100	75	43	64	22.0	2.6



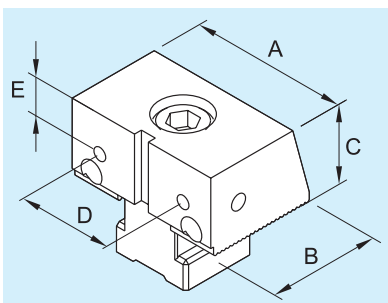
強力齒面  
單斜固定鉗口組  
(適用於B系列)

型 式	A	B	C	D	E	kg
SVF-ABG02-50	50	50	25	30	12.5	0.6
SVF-ABG02-72	72	74	40	44	21.5	2.0
SVF-ABG02-100	100	75	43	64	22.0	2.6



強力段差  
單斜固定鉗口組  
(適用於B系列)

型 式	A	B	C	D	E	F	kg
SVF-ABS02-502	50	50	25	30	12.5	2	0.6
SVF-ABS02-505						5	
SVF-ABS02-722	72	74	40	44	21.5	2	2.0
SVF-ABS02-725						5	
SVF-ABS02-1002	100	75	43	64	22.0	2	2.6
SVF-ABS02-1005						5	



單斜固定鉗口組  
(適用於A、BE與C系列)

型 式	A	B	C	D	E	kg
SVF-AB03-50	50	35	25	30	12.5	0.4
SVF-AB03-72	72	48	40	44	21.5	1.1
SVF-AB03-100	100	48	43	64	22.0	1.7

BP

BPA

BC

CP

SU

PT

SVF

ALV

OK-  
VISE

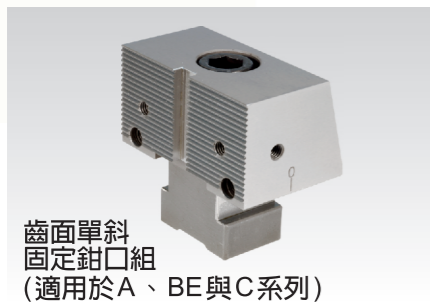
MITEE-  
BITE

JER-  
GENS

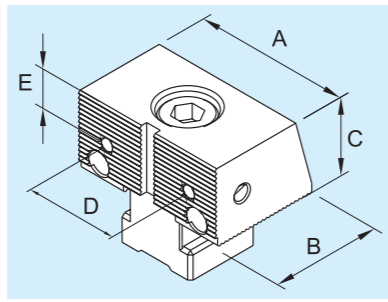
其他類

技術  
資料

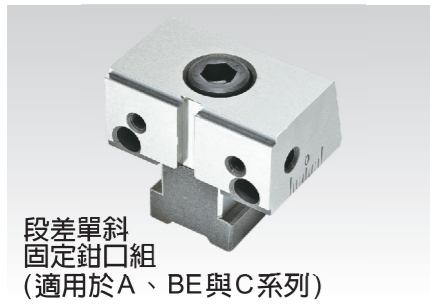
# SVF 選購組立件



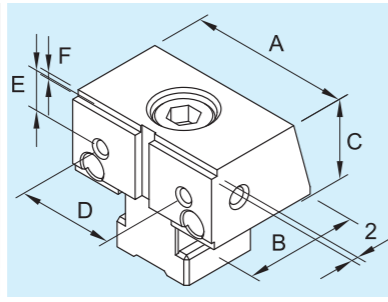
齒面單斜  
固定鉗口組  
(適用於A、BE與C系列)



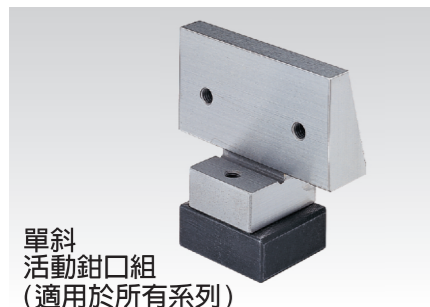
型 式	A	B	C	D	E	kg
SVF-ABG03-50	50	35	25	30	12.5	0.4
SVF-ABG03-72	72	48	40	44	21.5	1.1
SVF-ABG03-100	100	48	43	64	22.0	1.7



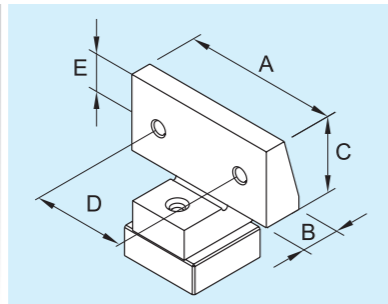
段差單斜  
固定鉗口組  
(適用於A、BE與C系列)



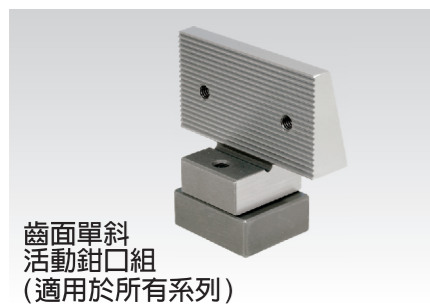
型 式	A	B	C	D	E	F	kg
SVF-ABS03-502	50	35	25	30	12.5	2	0.4
SVF-ABS03-505						5	
SVF-ABS03-722	72	48	40	44	21.5	2	1.1
SVF-ABS03-725						5	
SVF-ABS03-1002	100	48	43	64	22.0	2	1.7
SVF-ABS03-1005						5	



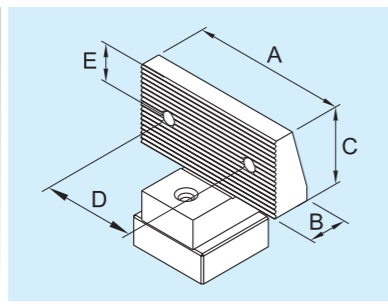
單斜  
活動鉗口組  
(適用於所有系列)



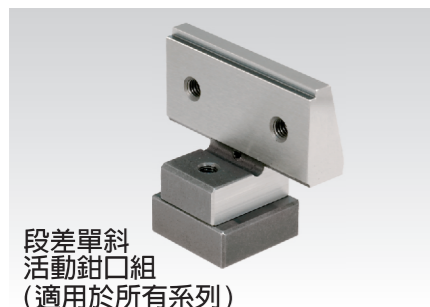
型 式	A	B	C	D	E	kg
SVF-AB04-50	50	12	24.3	30	12.5	0.2
SVF-AB04-72	72	18	39.3	44	21.5	0.6
SVF-AB04-100	100	21	42.0	64	22.0	1.0



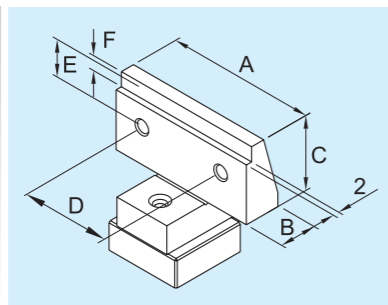
齒面單斜  
活動鉗口組  
(適用於所有系列)



型 式	A	B	C	D	E	kg
SVF-ABG04-50	50	12	24.3	30	12.5	0.2
SVF-ABG04-72	72	18	39.3	44	21.5	0.6
SVF-ABG04-100	100	21	42.0	64	22.0	1.0

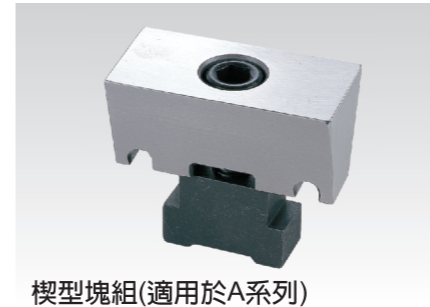


段差單斜  
活動鉗口組  
(適用於所有系列)

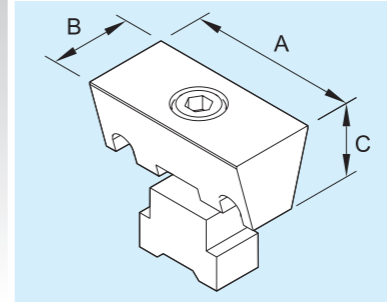


型 式	A	B	C	D	E	F	kg
SVF-ABS04-502	50	12	24.3	30	12.5	2	0.2
SVF-ABS04-505						5	
SVF-ABS04-722	72	18	39.3	44	21.5	2	0.6
SVF-ABS04-725						5	
SVF-ABS04-1002	100	21	42.0	64	22.0	2	1.0
SVF-ABS04-1005						5	

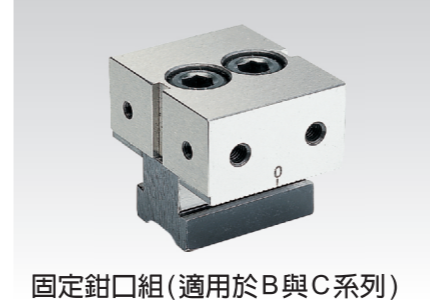
# SVF 選購組立件



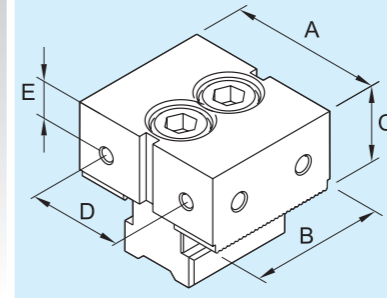
楔型塊組(適用於A系列)



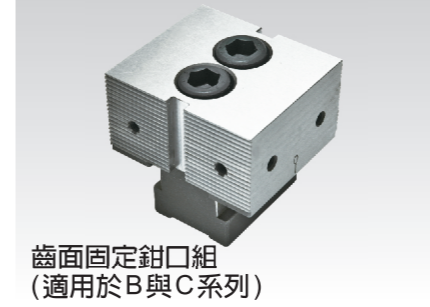
型 式	A	B	C	kg
SVF-A01-50	50	24	22	0.2
SVF-A01-72	72	35	35	0.6
SVF-A01-100	100	45	38	1.2



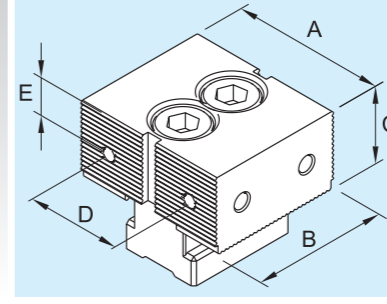
固定鉗口組(適用於B與C系列)



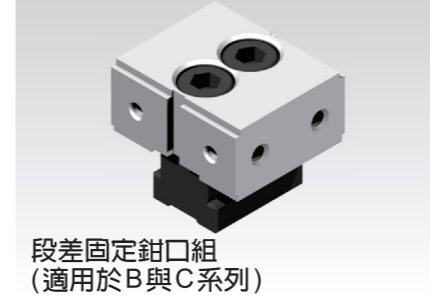
型 式	A	B	C	D	E	kg
SVF-B01-50	50	44	25	30	12.5	0.5
SVF-B01-72	72	65	40	44	21.5	1.8
SVF-B01-100	100	70	43	64	22.0	2.6



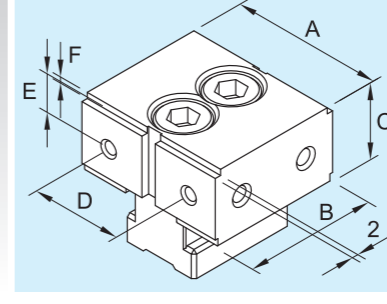
齒面固定鉗口組  
(適用於B與C系列)



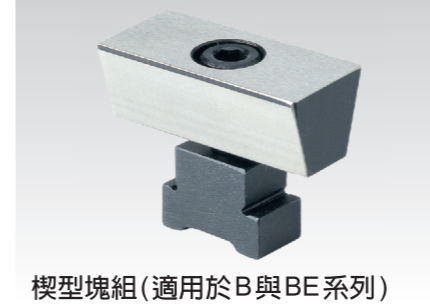
型 式	A	B	C	D	E	kg
SVF-BG01-50	50	44	25	30	12.5	0.5
SVF-BG01-72	72	65	40	44	21.5	1.8
SVF-BG01-100	100	70	43	64	22.0	2.6



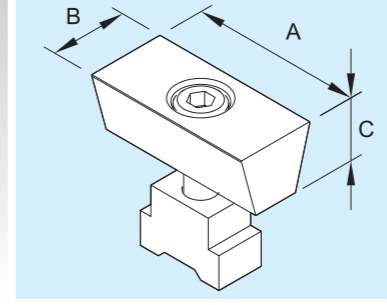
段差固定鉗口組  
(適用於B與C系列)



型 式	A	B	C	D	E	F	kg
SVF-BS01-502	50	44	25	30	12.5	2	0.5
SVF-BS01-505						5	
SVF-BS01-722	72	65	40	44	21.5	2	1.8
SVF-BS01-725						5	
SVF-BS01-1002	100	70	43	64	22.0	2	2.6
SVF-BS01-1005						5	



楔型塊組(適用於B與BE系列)



型 式	A	B	C	kg
SVF-B02-50	50	22.5	18.0	0.2
SVF-B02-72	72	35.0	29.0	0.6
SVF-B02-100	100	45.0	32.9	1.3

BP

BPA

BC

CP

SU

PT

SVF

ALV

OK-  
VISE

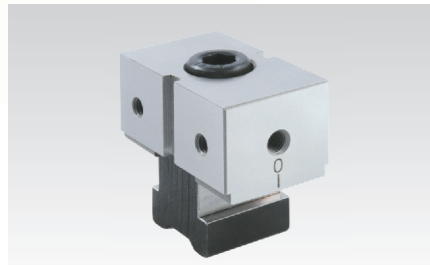
MITEE-  
BITE

JER-  
GENS

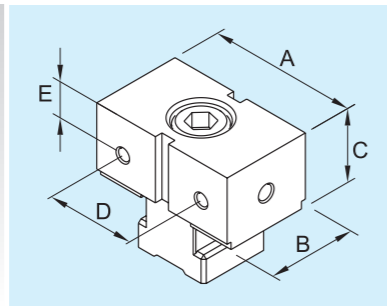
其他類

技術  
資料

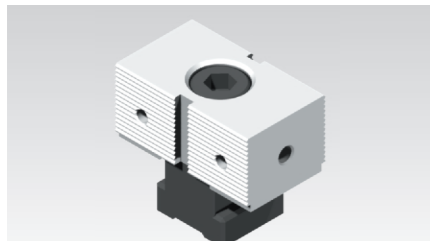
# SVF 選購組立件



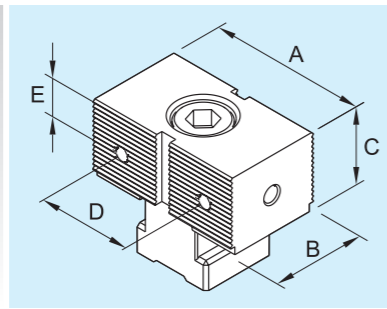
固定鉗口組 (適用於B與BE系列)



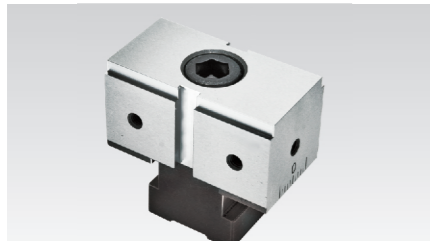
型 式	A	B	C	D	E	kg
SVF-B03-50	50	30	25	30	12.5	0.4
SVF-B03-72	72	40	40	44	21.5	1.1
SVF-B03-100	100	44	43	64	22.0	1.7



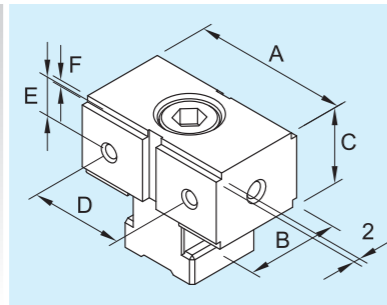
齒面固定鉗口組 (適用於B與BE系列)



型 式	A	B	C	D	E	kg
SVF-BG03-50	50	30	25	30	12.5	0.4
SVF-BG03-72	72	40	40	44	21.5	1.1
SVF-BG03-100	100	44	43	64	22.0	1.7

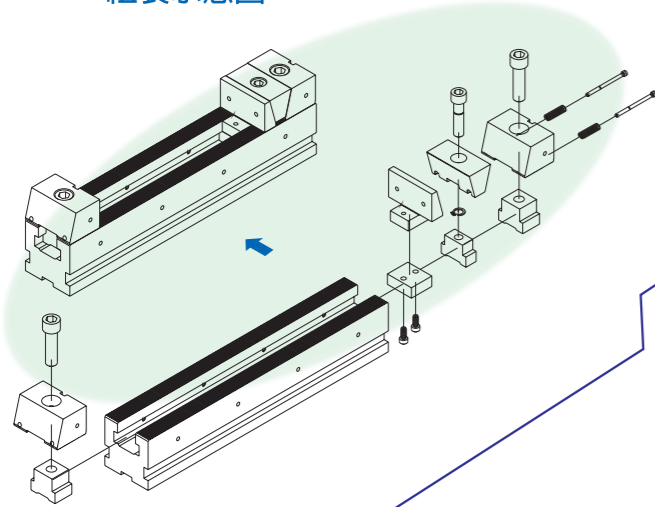


段差固定鉗口組 (適用於B與BE系列)

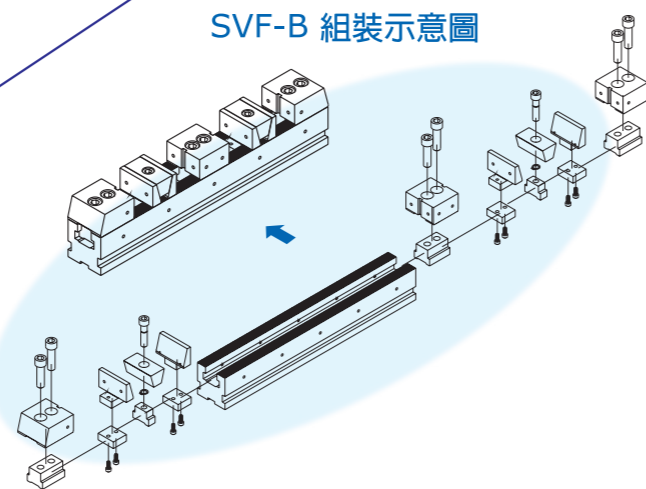


型 式	A	B	C	D	E	F	kg
SVF-BS03-502	50	30	25	30	12.5	2	0.4
SVF-BS03-505						5	
SVF-BS03-722	72	40	40	44	21.5	2	1.1
SVF-BS03-725						5	
SVF-BS03-1002	100	44	43	64	22.0	2	1.7
SVF-BS03-1005						5	

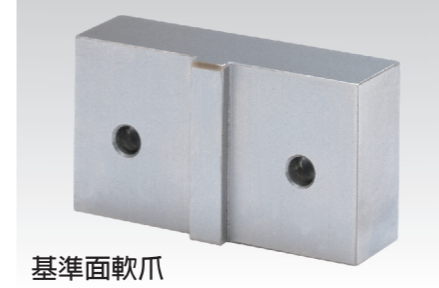
## SVF-A 組裝示意圖



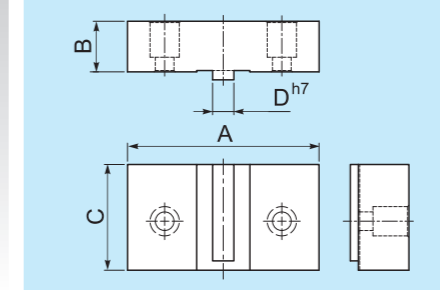
## SVF-B 組裝示意圖



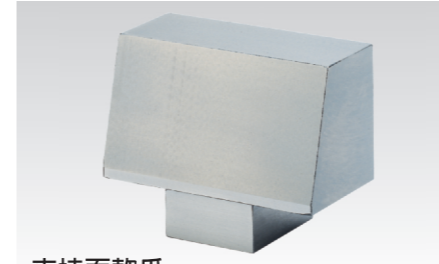
# SVF 選購組立件



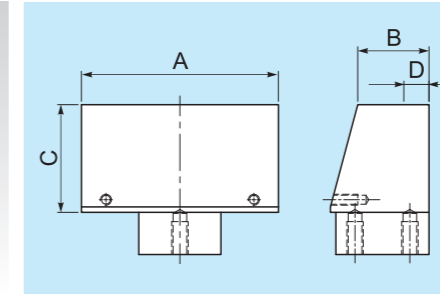
基準面軟爪



型 式	A	B	C	D	kg
SVF-S01-50	50	17	25	5	0.2
SVF-S01-50W	80	27			0.4
SVF-S01-72	72	19	40	8	0.4
SVF-S01-72W	115	30			1.1
SVF-S01-100	100	25	43	10	0.9
SVF-S01-100W	150	35			1.8

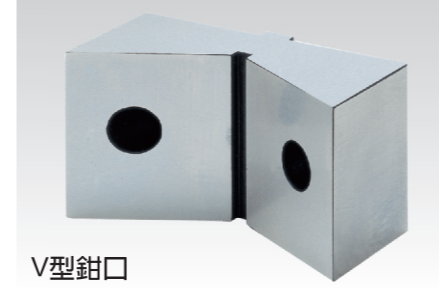


夾持面軟爪

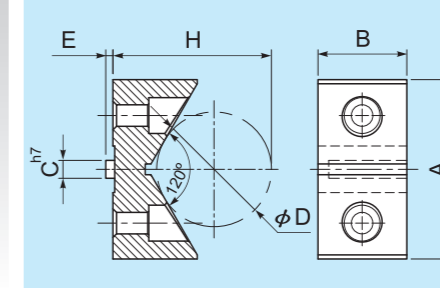


型 式	A	B	C	D	kg
SVF-S02-50	50	21	24.5	13	0.3
SVF-S02-50W	80	34			0.7
SVF-S02-72	72	26	39.5	19	1.0
SVF-S02-72W	115	40			1.9
SVF-S02-100	100	35	42.5	25	2.0
SVF-S02-100W	150	50			3.2

D 尺寸為可能成型尺寸



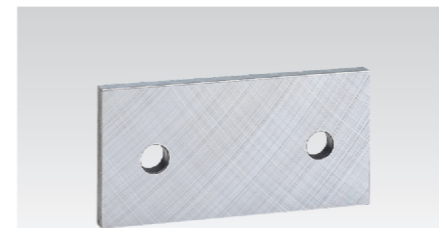
V型鉗口



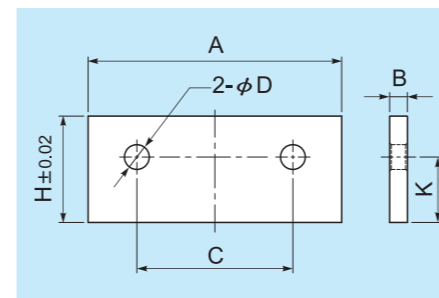
型 式	A	B	C	D
SVF-S03-50	50	25	5	42
SVF-S03-72	72	40	8	62
SVF-S03-100	100	43	10	62

型 式	E	H	CLAMP (MAX)	kg
SVF-S03-50	2	54.98	φ 70	0.2
SVF-S03-72	3	82.45	φ 110	0.6
SVF-S03-100	4	90.24	φ 160	1.2



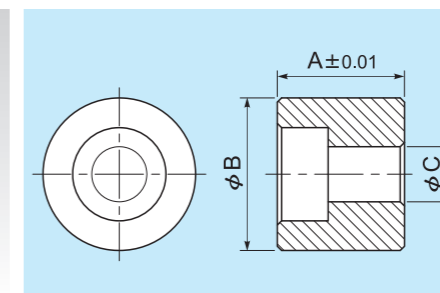
工件支持塊



型 式	A	B	C	D	H	K	kg
SVF-S04-50-17	49.5	5	30	6	17	12.3	0.03
SVF-S04-50-20		5			20		0.04
SVF-S04-50-22		3			22		0.03
SVF-S04-72-25	71.5	5	44	7	25	18.4	0.07
SVF-S04-72-30		5			30		0.08
SVF-S04-72-35		5			35		0.10
SVF-S04-72-37		3			37		0.15
SVF-S04-100-29	99.5	8	64	9	29	21.0	0.18
SVF-S04-100-33		8			33		0.21
SVF-S04-100-38		8			38		0.24
SVF-S04-100-40		5			40		0.10



基準板用墊圈



型 式	A	B	C	kg
SVF-S05-10	10	18	6.5	0.01
SVF-S05-15	15		0.02	
SVF-S05-23	23		0.03	
SVF-S05-100-15	15	25	9.0	0.03
SVF-S05-100-20	20		0.04	
SVF-S05-100-25	25		0.05	

(如需追加零件可單獨訂購)

BP

BPA

BC

CP

SU

PT

SVF

ALV

OK-VISE

MITEE-BITE

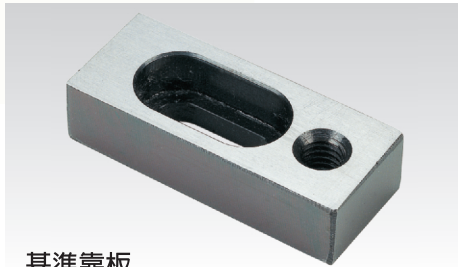
JERGENS

其他類

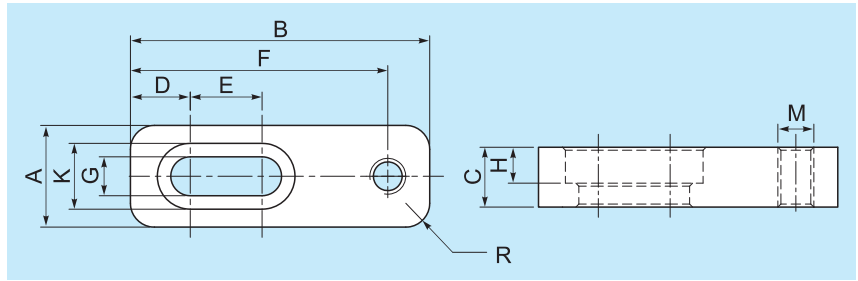
技術資料

# SVF

## 選購組立件



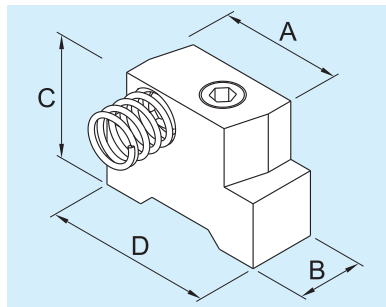
基準靠板



型 式	A	B	C	D	E	F	G	H	K	M	R	kg
SVF-S06-50	17	45	10	10.0	12	38	6.5	6.0	11	M6	4	0.03
SVF-S06-72	17	50	10	10.0	12	43	6.5	6.0	11	M6	4	0.04
SVF-S06-100	25	55	15	11.5	16	45	9.0	8.5	14	M8	5	0.14

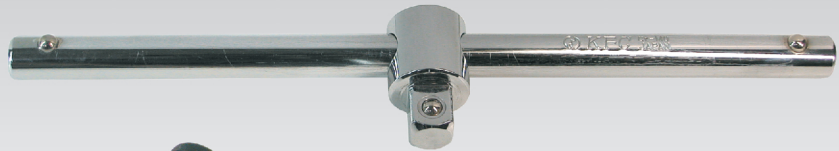


止動滑塊組  
(適用於B與BE系列)



型 式	A	B	C	D	kg
SVF-S07-50	19	10.2	19	25	0.04
SVF-S07-72	30	12.2	29	40	0.05
SVF-S07-100	45	14.0	29	56	0.05

T 型手動板手桿  
(SKD-T 1/2 L10)



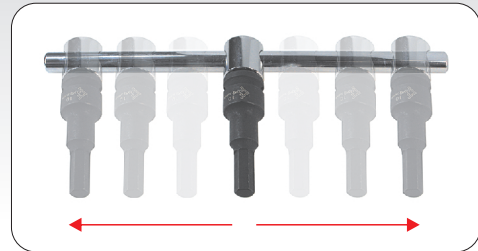
套筒



SKT-M10  
(10mm)



SKT-M6  
(6mm)



### SVF-A & SVF-B 標準配件

For	T 形螺帽		壓板		螺絲		定位梢		定位鍵		六角板手	
	型 式	數量	型 式	數量	型 式	數量	型 式	數量	型 式	數量	型 式	數量
50	PT06-1812	4 pcs	SVF-P01-50	4 pcs	CAP-M12-40L	比照孔數	PT11-1234	2 pcs	PT27-1810 CAP-M6-10L	2 pcs	SPN-M6HEX	1 pc
72	PT06-1816		SVF-P01-72		CAP-M16-50L		PT11-1642				SPN-M8HEX	1 pc
100	PT06-1816		SVF-P01-72		CAP-M16-50L		PT11-1642				SPN-M10HEX	1 pc
											SPN-M12HEX	1 pc
											SPN-M14HEX	1 pc