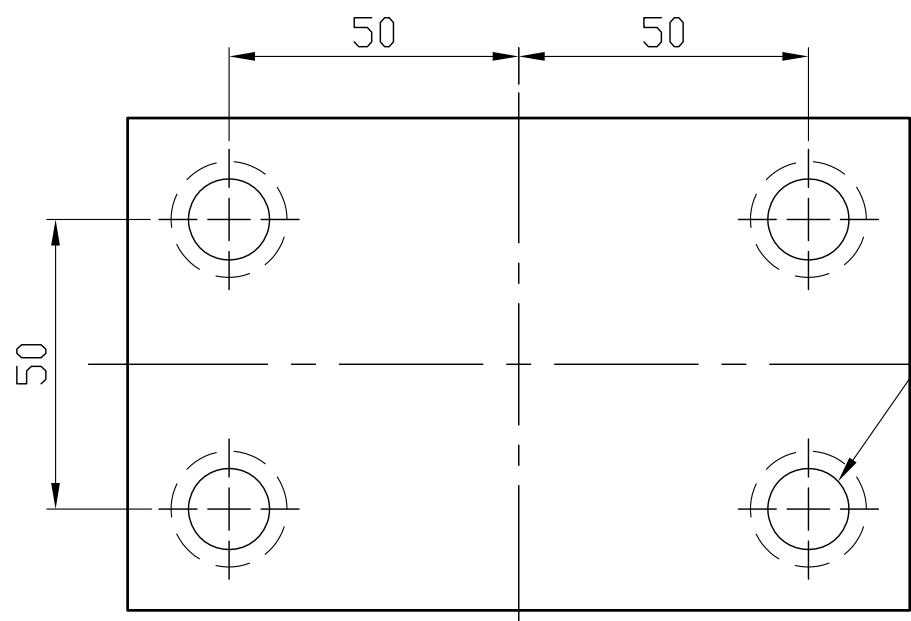
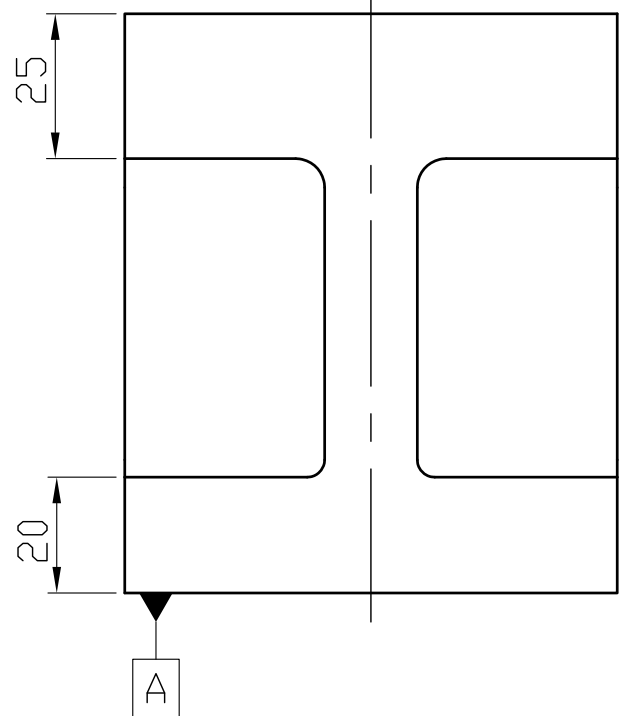
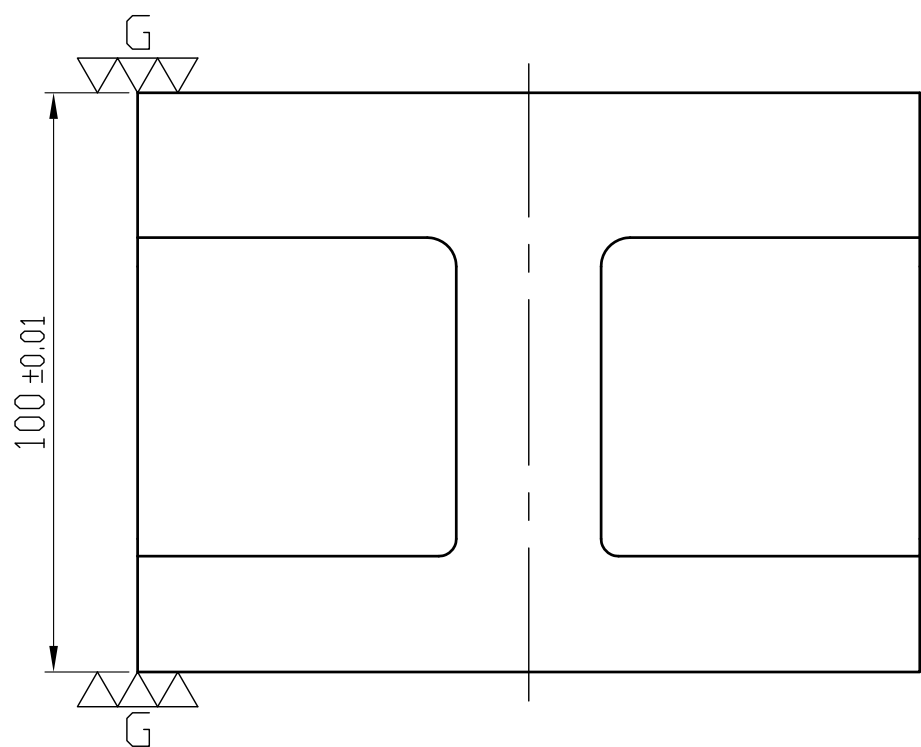
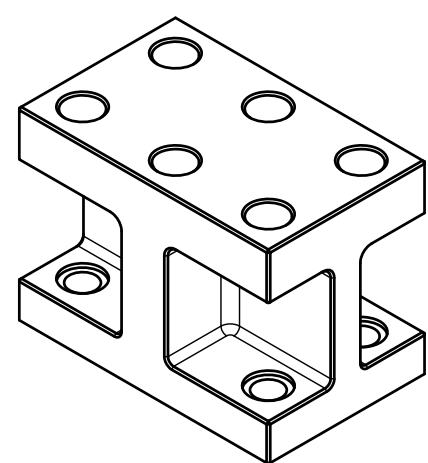
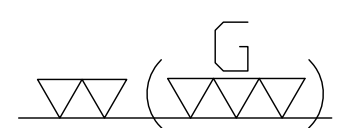


6-M12  
Inserted  
(Figure L)



4-M12  
Cap-Screw hole  
(Figure A)

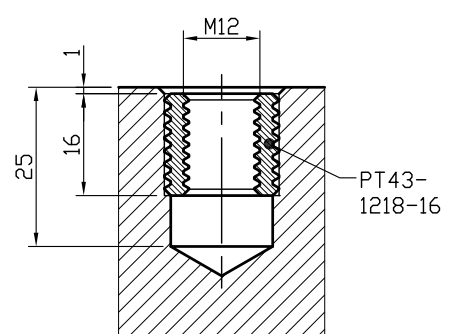
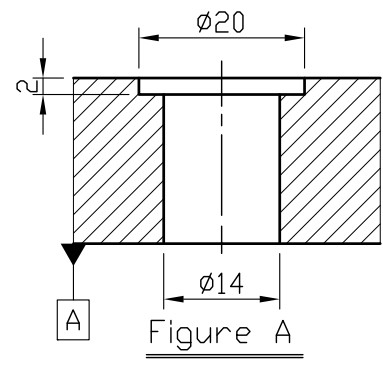


Figure L

\*Edge chamfered C1

NW:5.76KG

Material FC300		Heat treatment Annealing Process			Surface treatment		
Drafted by KENZI	Checked by	Approved by	Scale 1/1	Date 2014.11.18	Sheet 1/1	Edition A	
			TITLE H/CAST SECTION				
			DWG.ND. BP36-135085-0100-12				