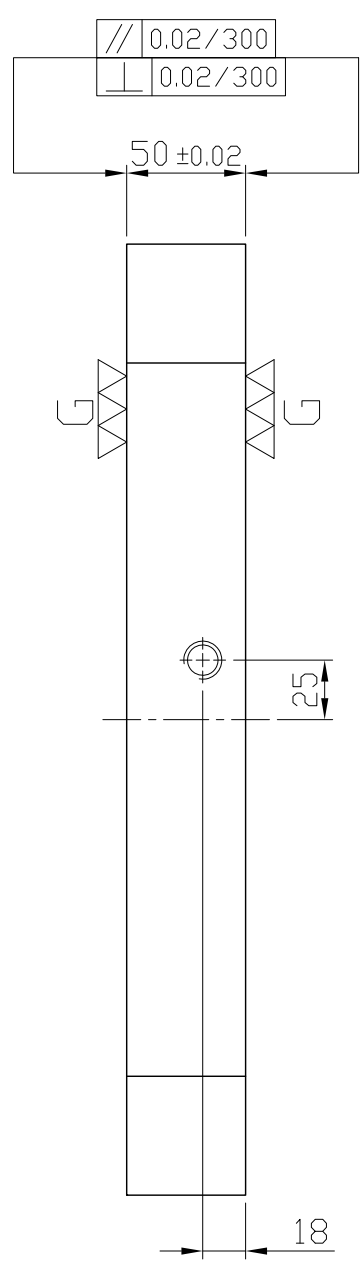
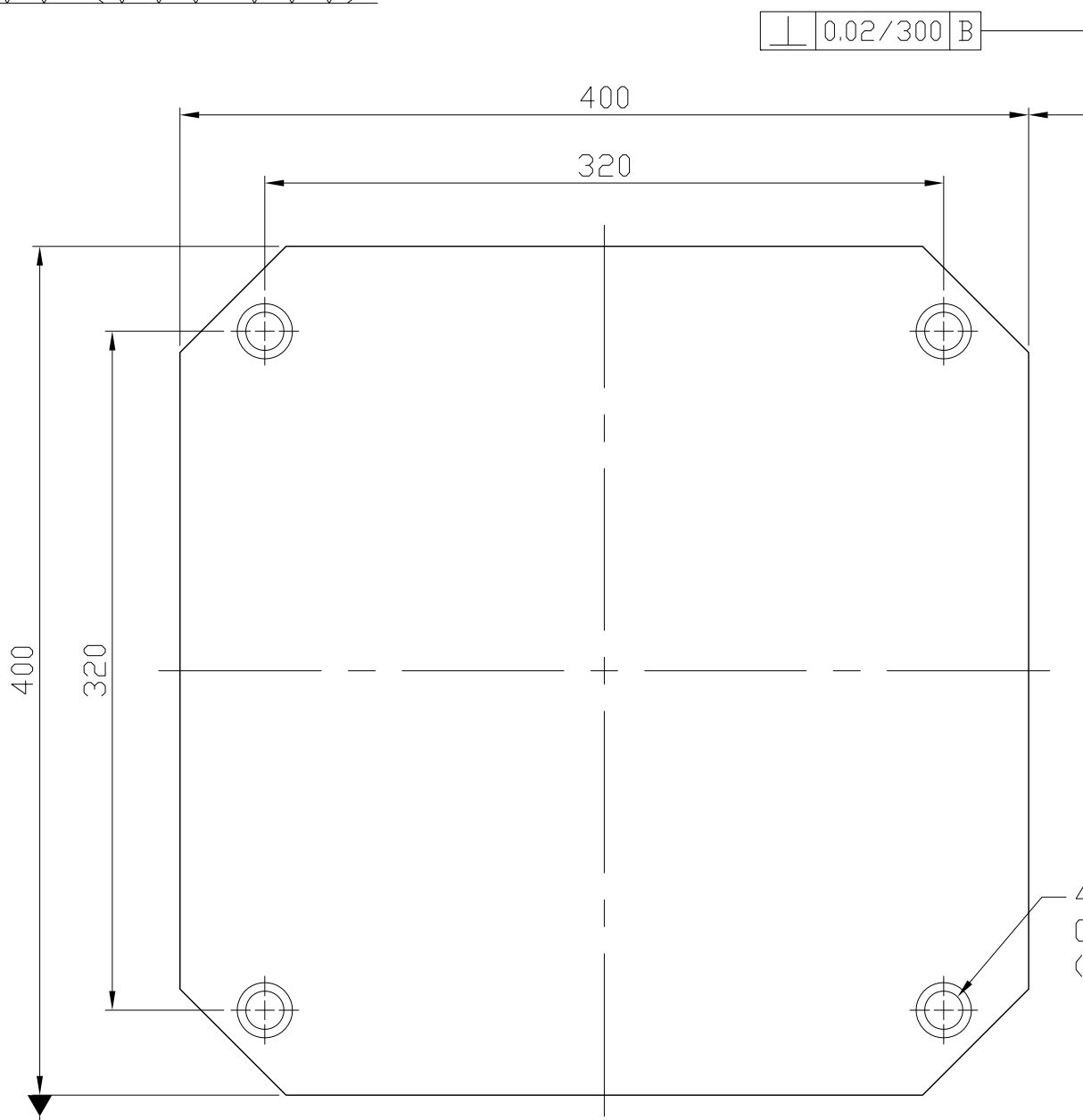
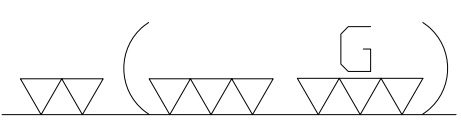


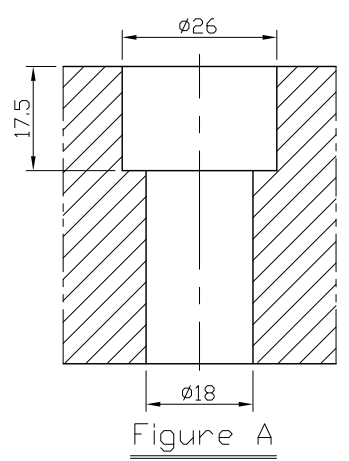
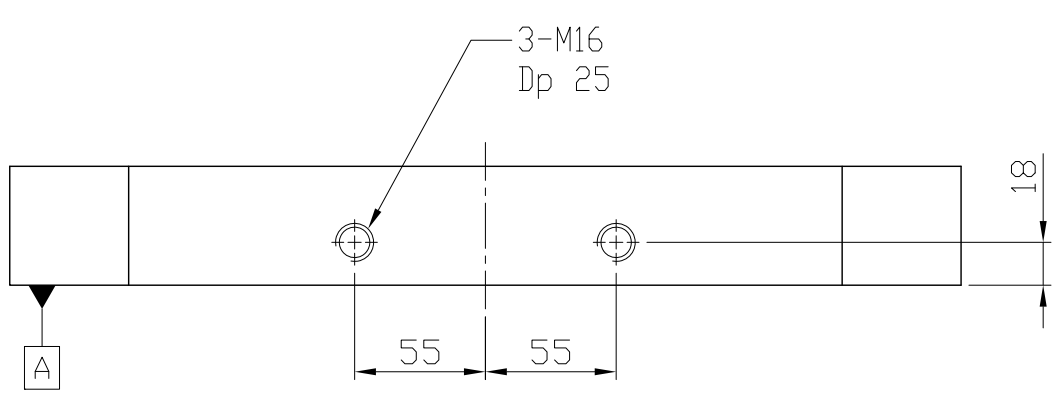
1 2 3 4 5 6 7 8 9 10 11 12 13 14 15 16 17 18 19 20

A
B
C
D
E
F
G
H
I
J
K
L
M
N
O
P
Q
R
S
T
U
V
W
X
Y
Z
AA
AB

A
B
C
D
E
F
G
H
I
J
K
L
M
N
O
P
Q
R
S
T
U
V
W
X
Y
Z
AA
AB



4-M16
Cap-Screw hole
(Figure A)



NW:57KG

*Edge chamfered C2

| | | | | | | | |
|---------------------|------------|-------------------------------------|----------------------------|--------------|--------------------|--------------|--------------|
| Material FC300 | | Heat treatment Annealing Process | | | Surface treatment | | |
| Drafted by S.C.H | Checked by | Approved by | | Scale 1/1 | Date 2011.10.19 | Sheet 1/1 | Edition A |
| | | | TITLE M/C BASE PLATE | | | | |
| | | | DWG.NO. BP04-50400-0400 | | | | |

1 2 3 4 5 6 7 8 9 10 11 12 13 14 15 16 17 18 19 20