

2- $\phi 16^{+0.020/+0.007}$ Thru
 4-M16 Cap-Screw hole (Figure A)

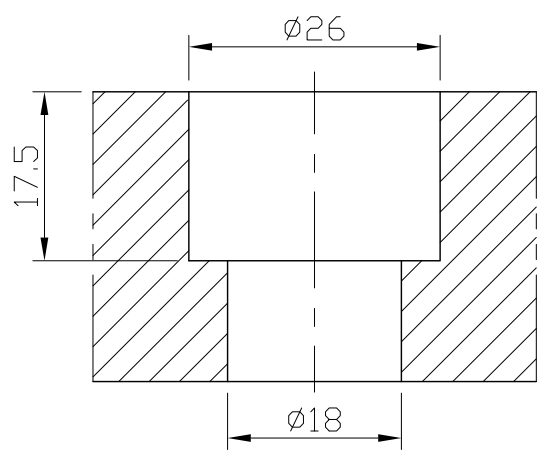


Figure A

*Edge chamfered C2

NW:9KG

Material FC300		Heat treatment Annealing Process			Surface treatment		
Drafted by S.C.H	Checked by	Approved by		Scale 1/1	Date 2012.01.12	Sheet 1/1	Edition A
			TITLE SUB-PLATE				
			DWG.ND. BP19-30200-0200-16				